

(Son Ramonell - Es Figueràl)

Ref: ONPM2404003



House for sale in Marratxí

In an area of continuous revaluation next to the large Alcampo shopping centre, these eight semi-detached houses with private swimming pool and garden are located. With a modern image, they will have four bedrooms and three bathrooms distributed over two floors. Privileged surroundings very well communicated with Palma, shopping centres, train and airport, but at the same time in a quiet and familiar area. Building licence in process, works are expected to start in October 2024 and to be completed in December 2025.

Ground floor: Comprising entrance porch, hall, bathroom, bedroom, living-dining room and kitchen. First floor: Comprising hall, laundry room, terrace, three bedrooms and two bathrooms, one of them en suite. Terrace and private garden with swimming pool, and communal area with access to private parking space for each of the homes.

HIGH QUALITIES: sate, aerothermics, carpentry, porcelain tiles, taps and top brand electrical appliances. They will be delivered with fitted kitchen, fitted wardrobes, bathroom furniture and screens. In the publication you will find quality specifications, plans and renderings. Improvement options not included in the price: Photov [...]

Marratxí /
Son Ramonell - Es Figueràl

Unit bj
Completion Q2 2024

FEATURES

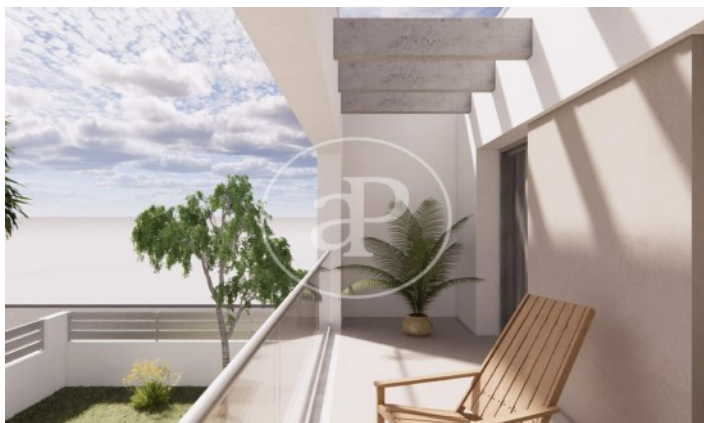
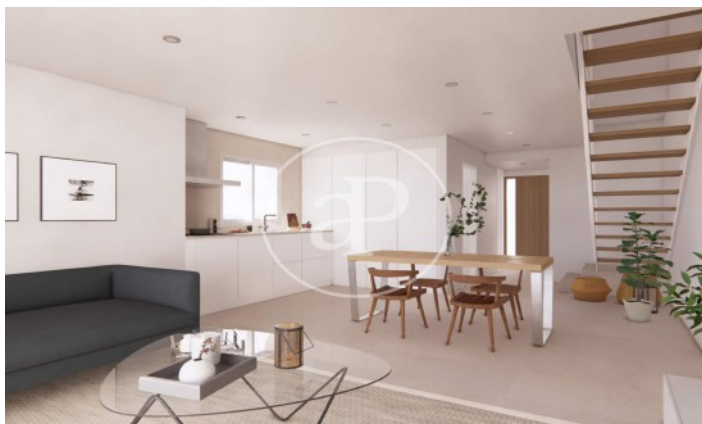
Surface 0 m² / 23 m² terrace
4 Rooms
3 Toilets

- ✓ Views
- ✓ Heating
- ✓ AACC
- ✓ Terrace
- ✓ Backyard
- ✓ Pool
- ✓ Has parking

Price 620,000 €

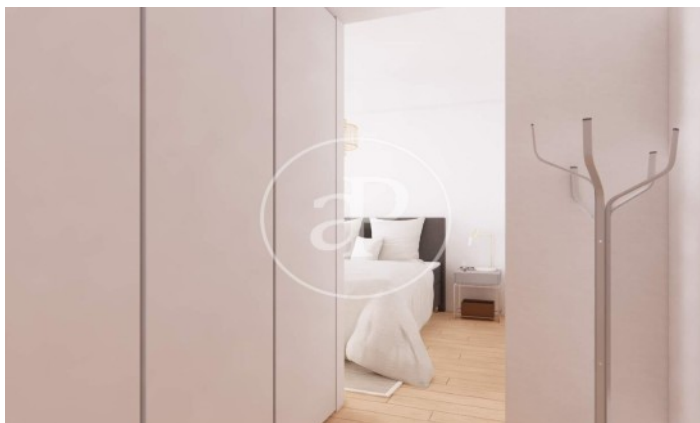
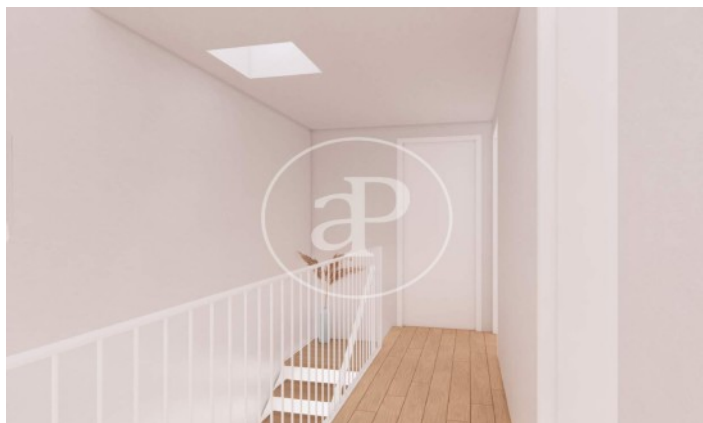
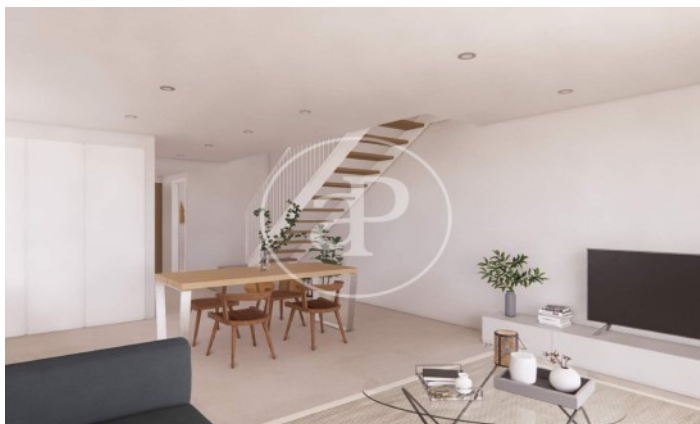
(Son Ramonell - Es Figuerà)

Ref: ONPM2404003



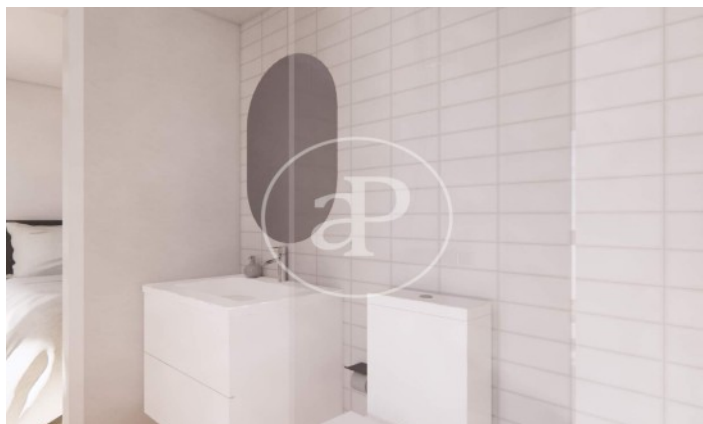
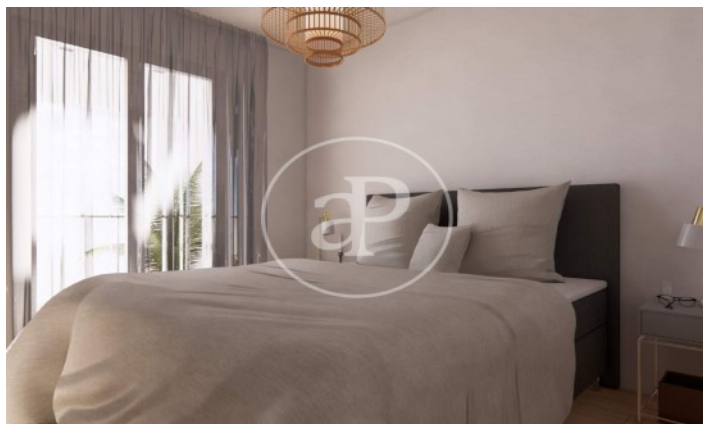
(Son Ramonell - Es Figuerà)

Ref: ONPM2404003



(Son Ramonell - Es Figuerà)

Ref: ONPM2404003



The information about any property is not binding to any offer or contract. Any verbal or written declaration made by aProperties with regards to the value or condition of the property should not be considered accurate or factual. The pictures make reference to some parts of the property at the times that they were taken. The areas, dimensions and distances that are given are approximate and should be checked by the client. The images are computer generated and are just an approximate indication of the real appearance of the property; these may change at any time. The information with regards to the property may also change at any time.

Contact us today for more information or to arrange a viewing

Tel: 871 16 01 60

apropertiespalma@aproperties.es

<https://www.aproperties.es>