

Sa Cabana - Can Carbonell - Ses Cases Noves, Marratxi

REF. VPM2404016

House for sale in Marratxi

Features

- ✓ Terrace
- ✓ Backyard
- ✓ Has parking

Price

1,850,000 €

Surface

866 m²

Plot surface

4,693 m²

Bedrooms

6

Bathrooms

5



Welcome to this property situated in a privileged location! This large property is close to all the services necessary for day-to-day life, such as schools, supermarkets, gyms and a shopping centre, in an urbanised area that offers comfort and an unbeatable location. The main house, distributed over two floors, covers almost 500 sqm, with other complementary constructions that bring the total to 866 sqm. With entrances from two streets, this property is ideal for a complete renovation project or to be divided into plots, in accordance with the town planning regulations which allow plots of a minimum of 400 sqm each. The main house has six bedrooms, four bathrooms, a guest toilet, two kitchens, several living rooms with fireplaces and dining rooms with high ceilings that offer

timeless elegance. In addition, it has several terraces, one of them, the largest, covered, which allows you to enjoy the large plot and the fresh and consolidated garden with tranquillity and wellbeing. From the house, you can also enjoy the impressive views of the Tramuntana mountain range. This property is ideal for those looking to live in a unique home only 10 minutes away from Palma, or for investors interested in developing the plot in a fully consolidated and highly profitable area. There is also the possibility of acquiring more plots attached to this one, so don't hesitate to...

Contact us,
we will be happy to assist you,
to offer you more details and information.

Sa Cabana - Can Carbonell - Ses Cases Noves, Marratxí

REF. VPM2404016



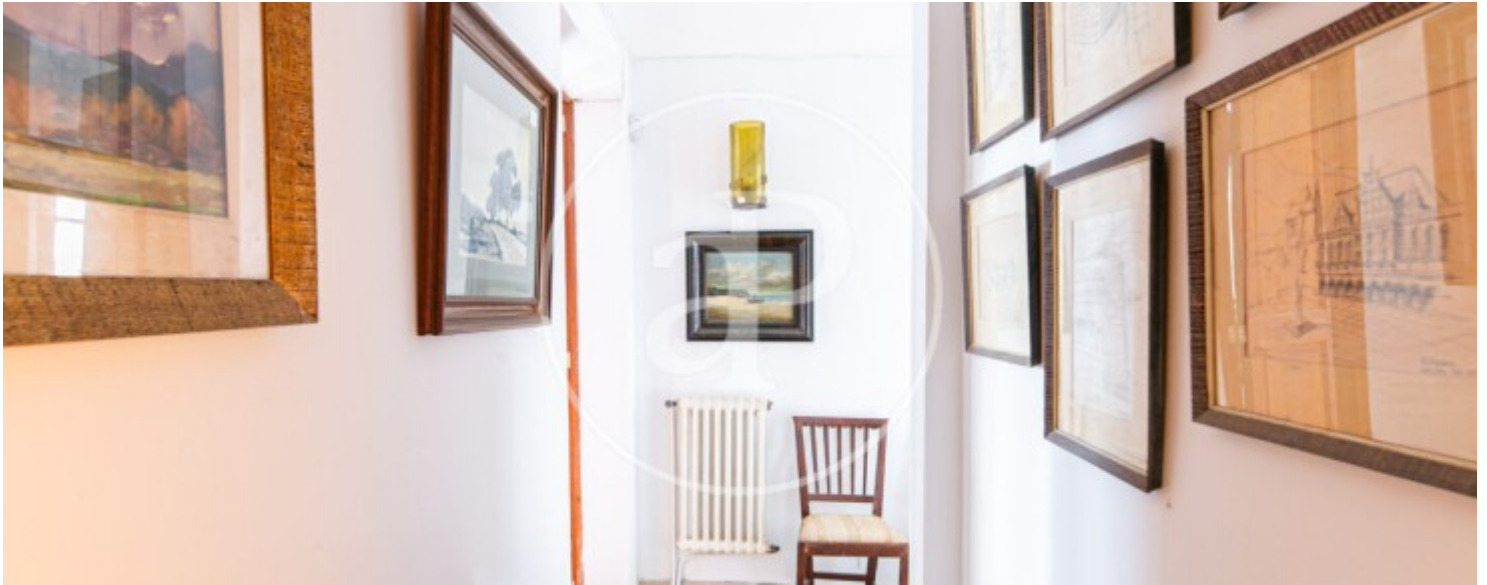
Sa Cabana - Can Carbonell - Ses Cases Noves, Marratxí

REF. VPM2404016



Sa Cabana - Can Carbonell - Ses Cases Noves, Marratxí

REF. VPM2404016



Sa Cabana - Can Carbonell - Ses Cases Noves, Marratxí

REF. VPM2404016



The information about any property is not binding to any offer or contract. Any verbal or written declaration made by aProperties with regards to the value or condition of the property should not be considered accurate or factual. The pictures make reference to some parts of the property at the times that they were taken. The areas, dimensions and distances that are given are approximate and should be checked by the client. The images are computer generated and are just an approximate indication of the real appearance of the property; these may change at any time. The information with regards to the property may also change at any time.

For **more information** or
to make an appointment

apropertiespalma@aproperties.es
Tel: 871 16 01 60
www.aproperties.es