



Pórtol, Marratxí

REF. VPM2511010

House for sale in Pórtol (Marratxí)

Features

- ✓ Views
- ✓ Boxroom
- ✓ Terrace
- ✓ Pool
- ✓ Heating
- ✓ AACC
- ✓ Backyard
- ✓ Has parking

Price

3,300,000 €

Surface
287 m²

Plot surface
14 m²

Bedrooms
4

Bathrooms
3



Exclusive rustic estate of 14,300 m² located in the prestigious area of Pórtol.

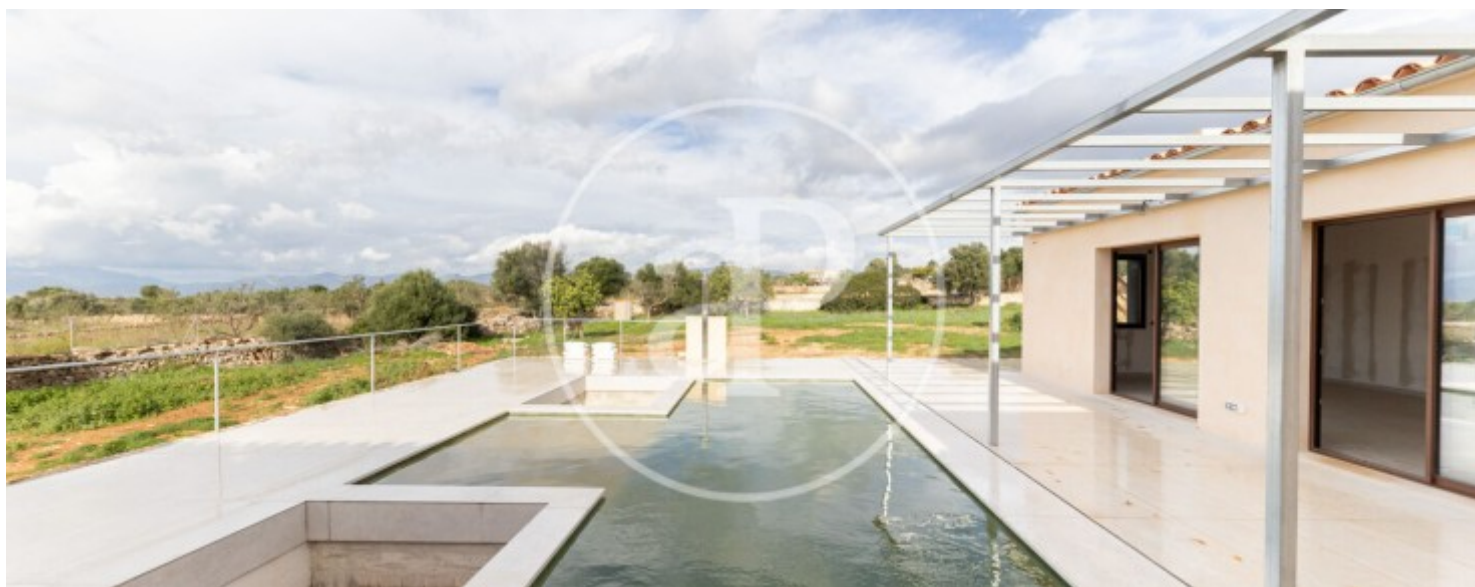
A privileged setting that combines the tranquility of a natural environment with the convenience of being just 22 minutes from Palma and close to the airport — ideal both as a permanent residence and a second home. The property features a newly built house distributed over two floors with a total of 287 m², designed to offer maximum comfort and privacy. Its T-shaped architecture harmoniously divides the spaces into three distinct areas: Day area: spacious living room, dining room and open-plan kitchen with direct access to a porch offering sea views and the

Mediterranean landscape. Night area: four exterior double bedrooms with fitted wardrobes and three bathrooms (two of them en suite). Multipurpose area: versatile space ideal for a gym, games room or office, along with laundry room, garage and an additional bathroom. Outside, the estate offers a Mediterranean garden with swimming pool, landscaped areas and a pergola with outdoor dining space — perfect for enjoying Mallorca's climate and views all year round. The house includes high-quality materials and equipment: Underfloor heating and ducted air conditioning (aerothermal...

Contact us,
we will be happy to assist you,
to offer you more details and information.

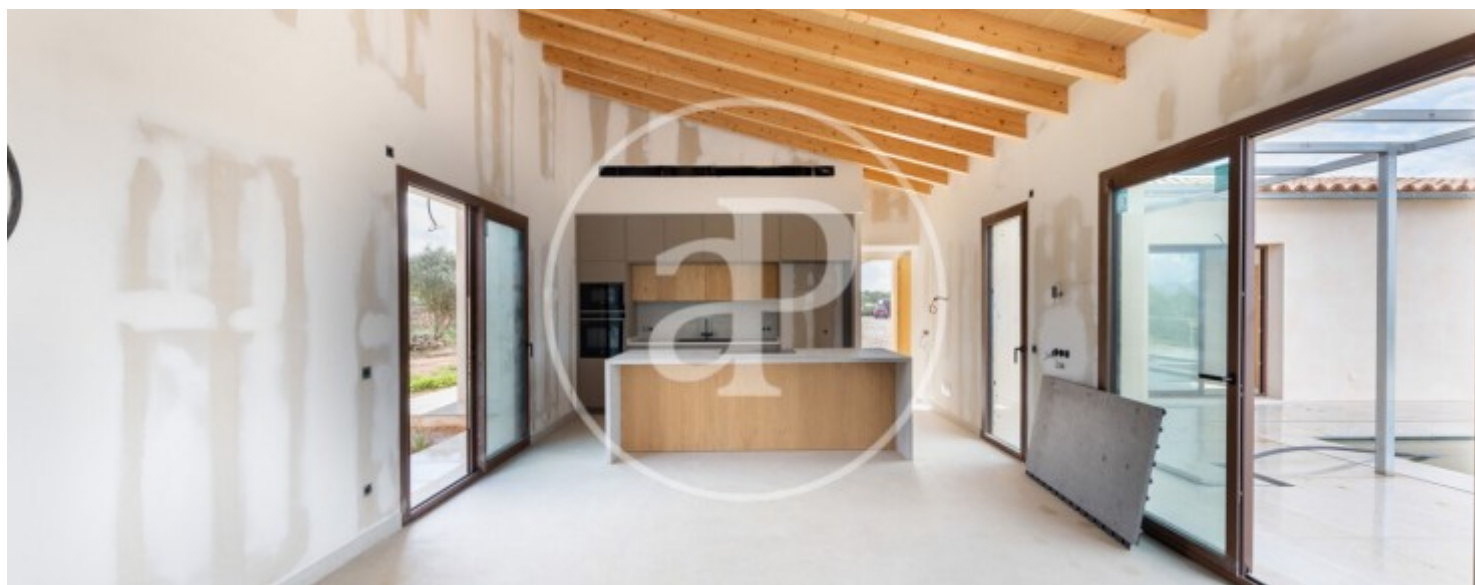
Pórtol, Marratxí

REF. VPM2511010



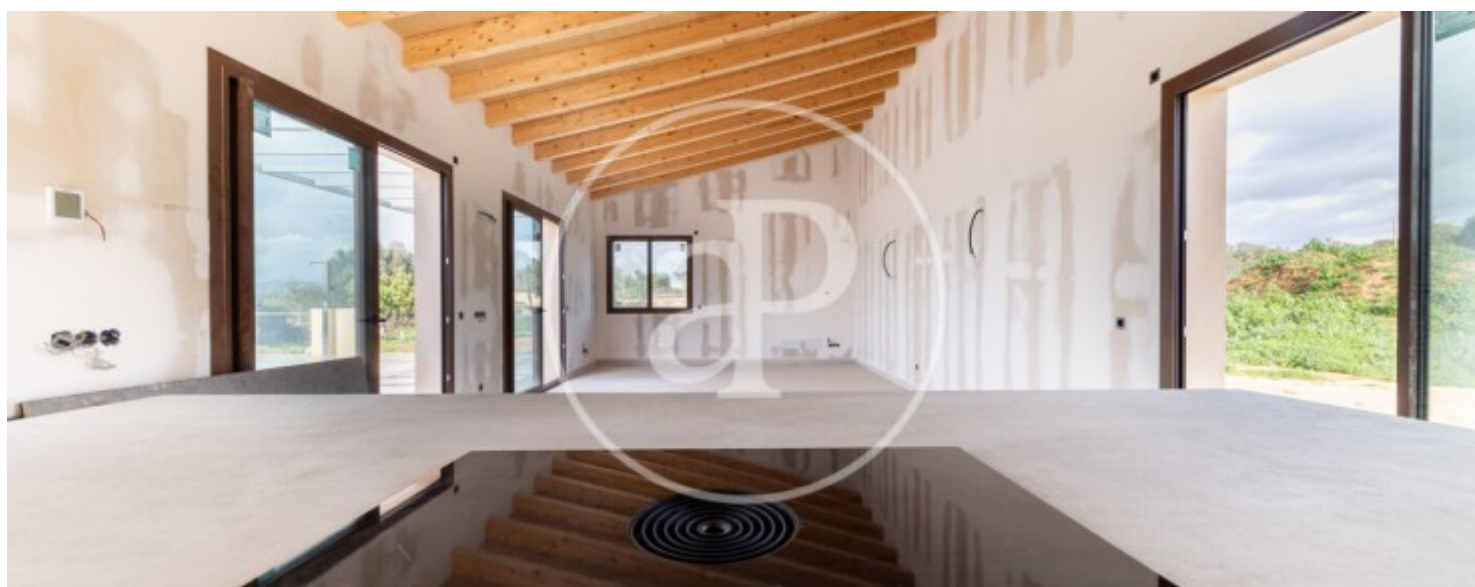
Pórtol, Marratxí

REF. VPM2511010



Pórtol, Marratxí

REF. VPM2511010



Pórtol, Marratxí

REF. VPM2511010



The information about any property is not binding to any offer or contract. Any verbal or written declaration made by aProperties with regards to the value or condition of the property should not be considered accurate or factual. The pictures make reference to some parts of the property at the times that they were taken. The areas, dimensions and distances that are given are approximate and should be checked by the client. The images are computer generated and are just an approximate indication of the real appearance of the property; these may change at any time. The information with regards to the property may also change at any time.

For **more information** or
to make an appointment

apropertiespalma@aproperties.es
Tel: 871 16 01 60
www.aproperties.es