

Es Garrovers, Marratxí

REF. VPM2404024



House for sale in La Planera

Features

- ✓ Heating
- ✓ AACC
- ✓ Backyard
- ✓ Gym
- ✓ Boxroom
- ✓ Terrace
- ✓ Pool
- ✓ Has parking

Price

2,700,000 €

Surface

439 m²

Plot surface

2,509 m²

Bedrooms

5

Bathrooms

5



Welcome to the epitome of luxury and elegance in one of the most sought after and exclusive areas, very close to Palma.

Introducing this architectural jewel, a spectacular residence that combines innovative design with first class amenities in every corner. Located in a privileged urbanisation, this stunning property offers a dream lifestyle, surrounded by elite services and leisure activities. With an international school, tennis school and lush parkland at your fingertips, every day is an adventure full of possibilities. With two floors and an expansive basement ready to be transformed into over 100 sqm of additional space, this home offers endless

opportunities to personalise it to your liking. Upon entering, you will be greeted by a majestic entrance hall that leads you into the open spaces of the main floor. The living room, with its integrated island kitchen, flows effortlessly into the pool area, an enclosed outdoor lounge and a covered porch, creating a perfect environment for entertaining or relaxation. The main floor also houses the master suite, with its own private garden, and a versatile multi-purpose room that can be adapted to suit your needs, whether as a self-contained flat, a guest space or a full service...

Contact us,
we will be happy to assist you,
to offer you more details and information.

Es Garrovers, Marratxí

REF. VPM2404024



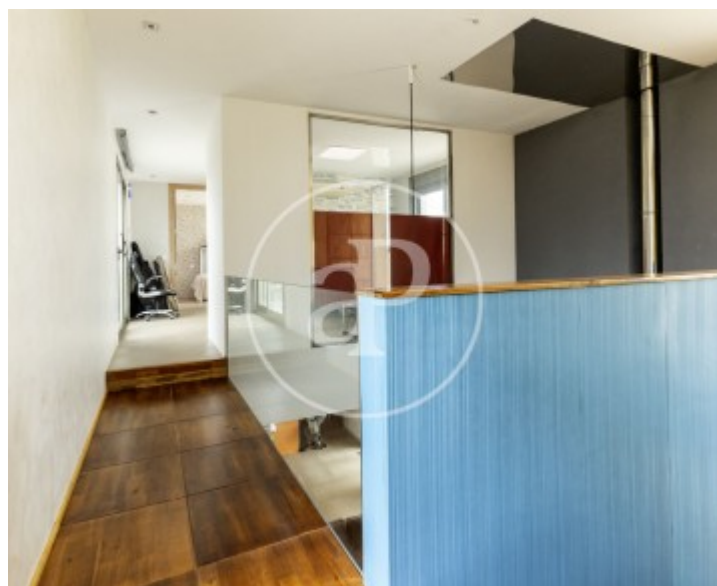
Es Garrovers, Marratxí

REF. VPM2404024



Es Garrovers, Marratxí

REF. VPM2404024



Es Garrovers, Marratxí

REF. VPM2404024



The information about any property is not binding to any offer or contract. Any verbal or written declaration made by aProperties with regards to the value or condition of the property should not be considered accurate or factual. The pictures make reference to some parts of the property at the times that they were taken. The areas, dimensions and distances that are given are approximate and should be checked by the client. The images are computer generated and are just an approximate indication of the real appearance of the property; these may change at any time. The information with regards to the property may also change at any time.



For **more information** or
to make an appointment

apropertiespalma@aproperties.es
Tel: 871 16 01 60
www.aproperties.es