

Majadahonda, Majadahonda

REF. VMO2205010



Detached house for sale in Carretera del Plantío area

Features

- ✓ Views
- ✓ Heating
- ✓ AACC
- ✓ Terrace
- ✓ Backyard
- ✓ Pool
- ✓ Lift
- ✓ Has parking

Price

1,990,000 €

Surface

600 m²

Bedrooms

6

Bathrooms

12



HOUSE ON A PLOT OF 2,800 SQUARE METERS WITH SWIMMING POOL PLUS SAUNA AND DRESSING ROOM.

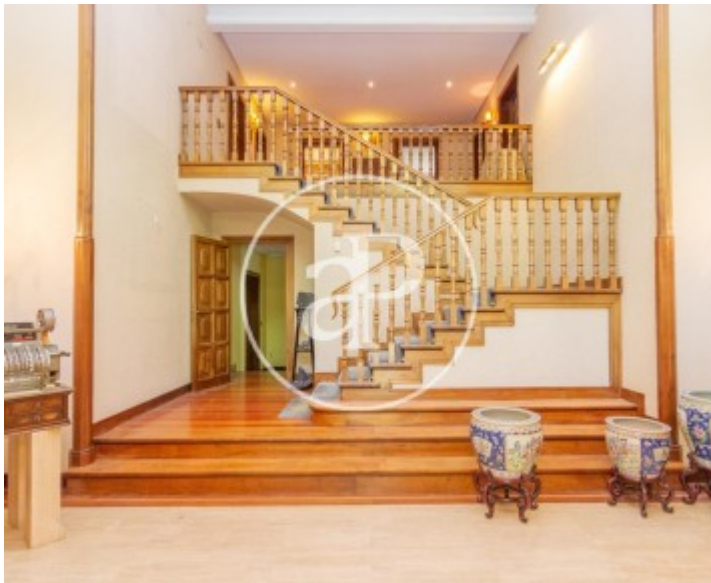
Very close to the natural park Cerro del Aire, is this fantastic house on a plot of 2800 m². The wonderful and well-kept garden has a fantastic swimming pool, with large trees and a very large lawn area around it. Once we enter the interior of the house, on the main floor we find a beautiful entrance with a huge hall very bright and with large windows around. The day area is divided into three large living rooms that communicate, overlooking the garden of the house, an office with bathroom and another living room. On the other side of the hall, we access the great kitchen with

large island, office and pantry. Attached to it is a living room with direct access to the garden. It also has a service area with bathroom, bedroom and laundry area. On this floor there are two guest toilets. Through a beautiful staircase we go up to the second floor and we find a hall where there are 5 spacious bedrooms, all with en suite bathroom and large closets. It also has an additional room to store linen. The master bedroom also has a sauna and dressing room. Two of the bedrooms have access to a beautiful terrace overlooking the garden. This house, in addition to its wonderful garden...

Contact us,
we will be happy to assist you,
to offer you more details and information.

Majadahonda, Majadahonda

REF. VMO2205010



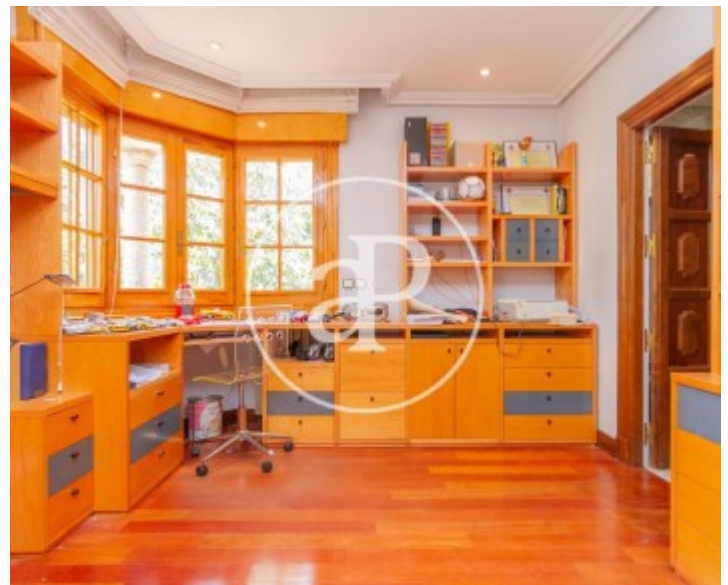
Majadahonda, Majadahonda

REF. VMO2205010



Majadahonda, Majadahonda

REF. VMO2205010





APROPERTIES
REAL ESTATE

Calle Serrano 60
28001 Madrid
T. 91 800 54 65
www.aproperties.es

Majadahonda, Majadahonda

REF. VMO2205010



The information about any property is not binding to any offer or contract. Any verbal or written declaration made by aProperties with regards to the value or condition of the property should not be considered accurate or factual. The pictures make reference to some parts of the property at the times that they were taken. The areas, dimensions and distances that are given are approximate and should be checked by the client. The images are computer generated and are just an approximate indication of the real appearance of the property; these may change at any time. The information with regards to the property may also change at any time.



For **more information** or
to make an appointment

apropertiesmadrid@aproperties.es
Tel: 91 800 54 65
www.aproperties.es