

Vallehermoso, Madrid

REF. VM2410043

Flat for sale in Cea Bermúdez (Madrid)

Features

- ✓ Boxroom
- ✓ Terrace
- ✓ Lift
- ✓ Concierge
- ✓ Has parking

Surface
282 m²

Bedrooms
5

Bathrooms
3

Price
1,500,000 €



Wonderful flat located in one of the main arteries of the Vallehermoso neighbourhood.

The property is distributed in a magnificent hall with a large dressing room from which you access the day area through a corridor that connects a spacious office and the day area of the house. From there we access a large living room decorated with fine wood and a fireplace. The living room is distributed into three interconnected rooms, with direct access to a luminous terrace thanks to its south orientation. Next, we find a corridor that connects with the night area and distributes the bedrooms. The night area has 4 bedrooms (three master bedrooms and one service bedroom) and 3

complete bathrooms. At the end of the house we find a large kitchen with office, with a spectacular window overlooking a large courtyard, laundry area and water area. From here there is access to the service door. The property has a large storage capacity thanks to the amount of built-in wardrobes it has. It also has a storage room of about 13 m³ and a parking space in the adjoining property included in the price. Vallehermoso, located in the Chamberí district, is an excellent residential option for those looking to live close to the centre of Madrid with easy access to the...

Contact us,
we will be happy to assist you,
to offer you more details and information.

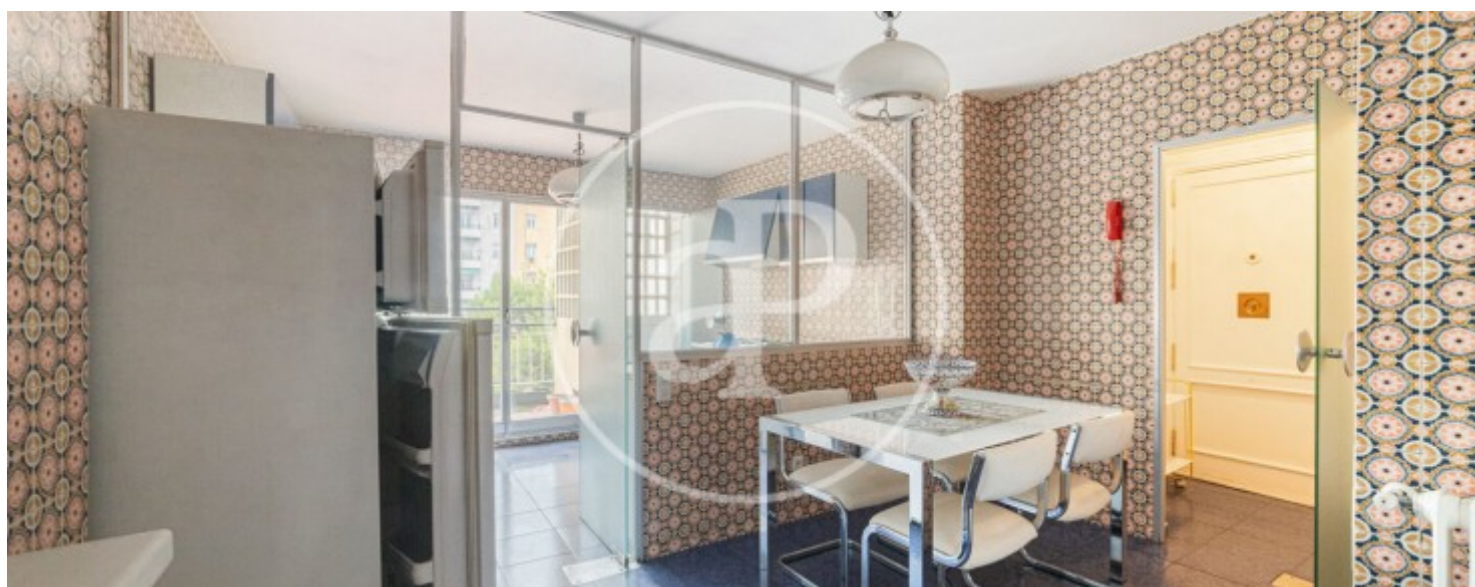
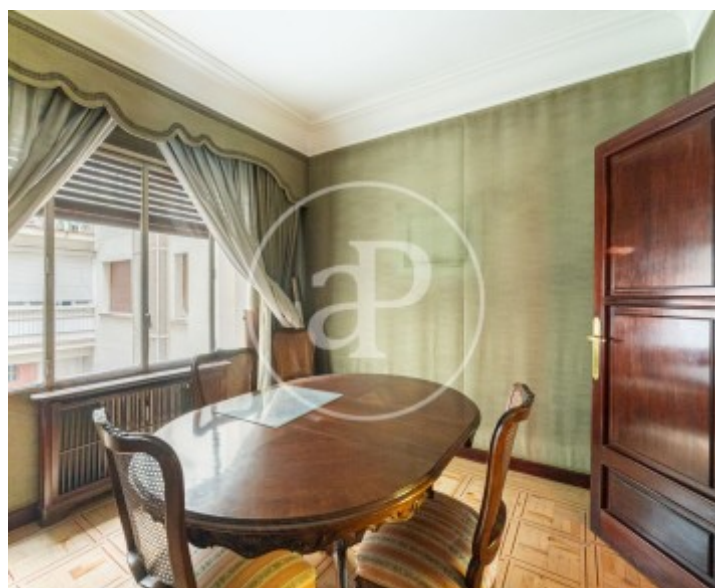
Vallehermoso, Madrid

REF. VM2410043



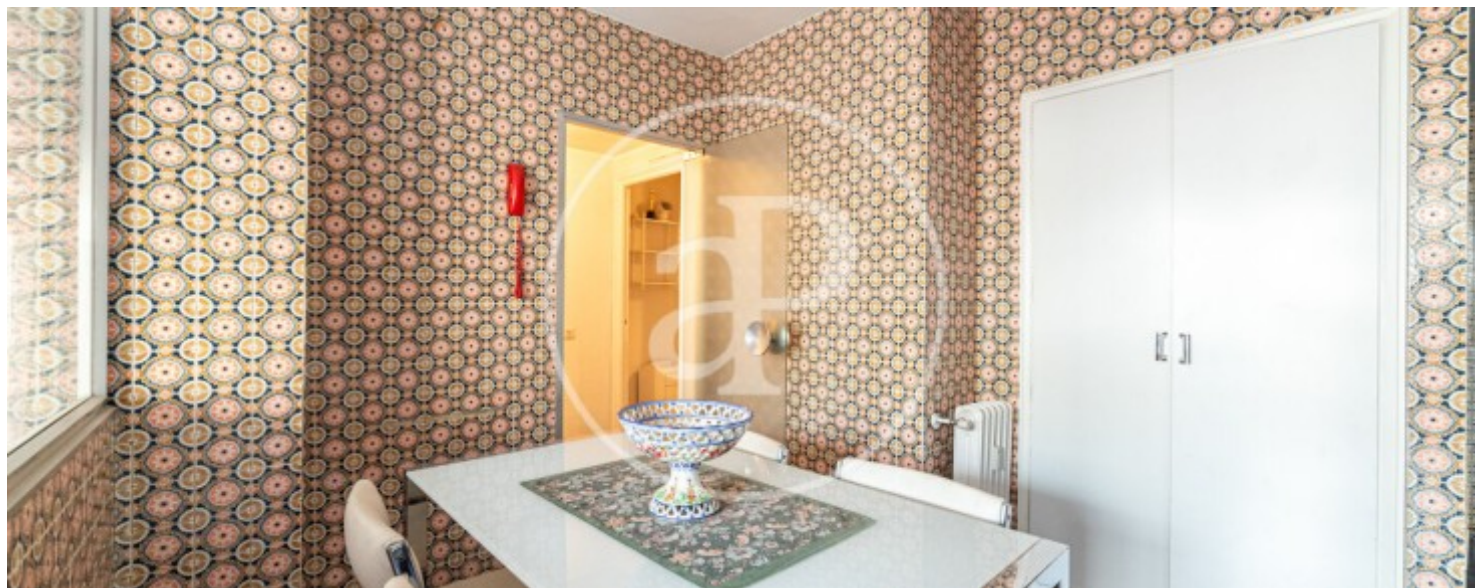
Vallehermoso, Madrid

REF. VM2410043



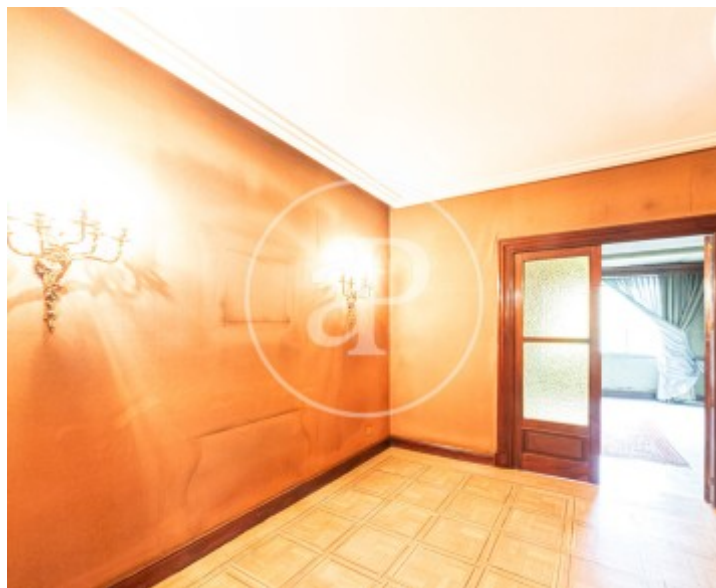
Vallehermoso, Madrid

REF. VM2410043



Vallehermoso, Madrid

REF. VM2410043



The information about any property is not binding to any offer or contract. Any verbal or written declaration made by aProperties with regards to the value or condition of the property should not be considered accurate or factual. The pictures make reference to some parts of the property at the times that they were taken. The areas, dimensions and distances that are given are approximate and should be checked by the client. The images are computer generated and are just an approximate indication of the real appearance of the property; these may change at any time. The information with regards to the property may also change at any time.

For **more information** or
to make an appointment

apropertiesmadrid@aproperties.es
Tel: 91 800 54 65
www.aproperties.es