

Vallehermoso, Madrid

REF. VM2607030

Flat for sale in Vallehermoso (Madrid)

Features

- ✓ Heating
- ✓ Terrace
- ✓ Concierge
- ✓ AACC
- ✓ Lift
- ✓ Has parking

Price

1,049,000 €

Surface

197 m²

Bedrooms

2

Bathrooms

2



In the established Vallehermoso neighborhood of Chamberí, aProperties Real Estate presents this exclusive, fully renovated penthouse apartment.

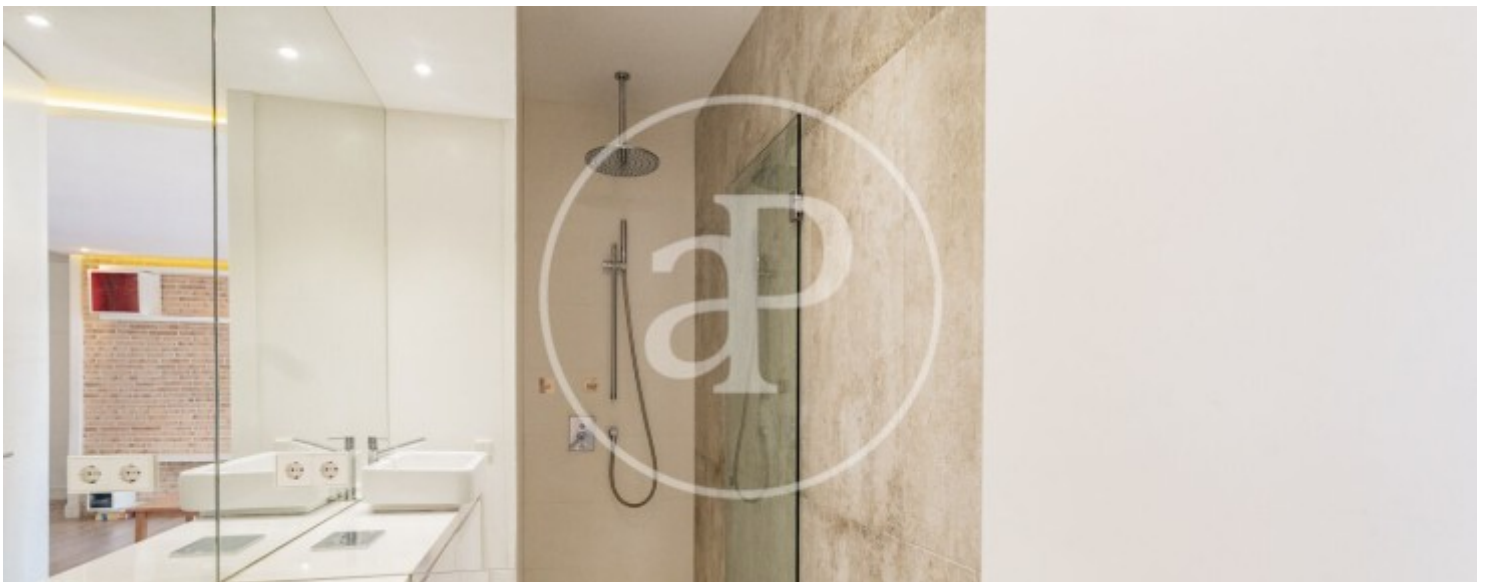
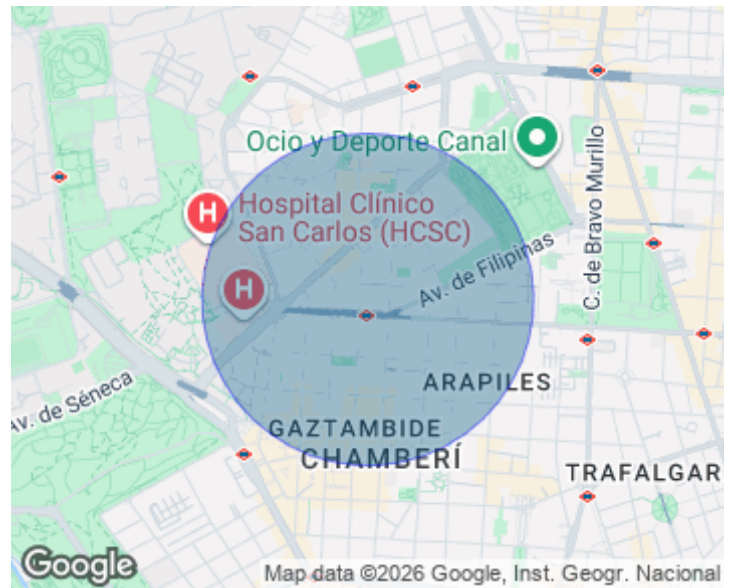
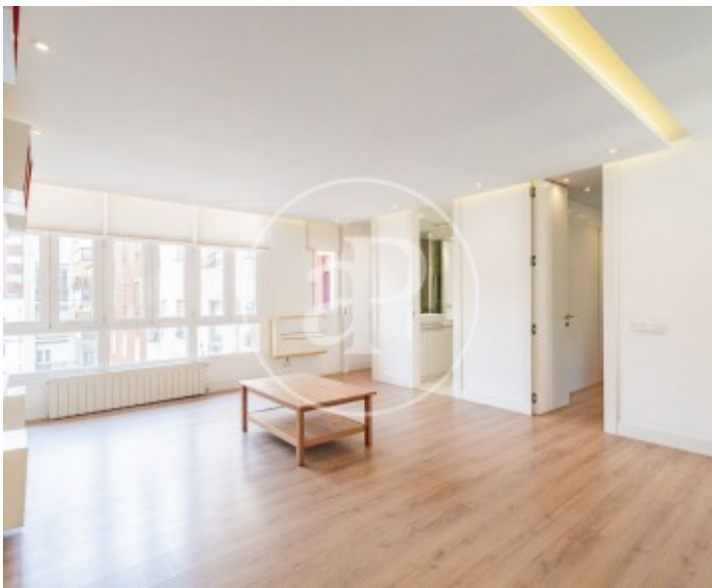
It boasts 98 m² of living space (according to the land registry) and an 86 m² private terrace. This is a rare opportunity for those seeking a bright and airy home with ample outdoor space in one of Madrid's most sought-after areas. The apartment currently features two bedrooms, one with an en-suite bathroom, as well as a second full bathroom and a fully equipped kitchen. Originally, it had three bedrooms, a layout that can easily be restored if desired. The renovation prioritized spaciousness in the living

area, creating a large living-dining room with windows facing both directions, providing exceptional natural light and excellent cross-ventilation. Its high-quality finishes and meticulous condition allow you to enjoy the apartment from day one. Located just steps from the Islas Filipinas metro station and very close to the Complutense University, the property is distinguished by its spectacular 86 m² private rooftop terrace, a true privilege in the heart of the city. A versatile space where you can enjoy different outdoor settings, from an outdoor dining area to a chill-out zone,...

Contact us,
we will be happy to assist you,
to offer you more details and information.

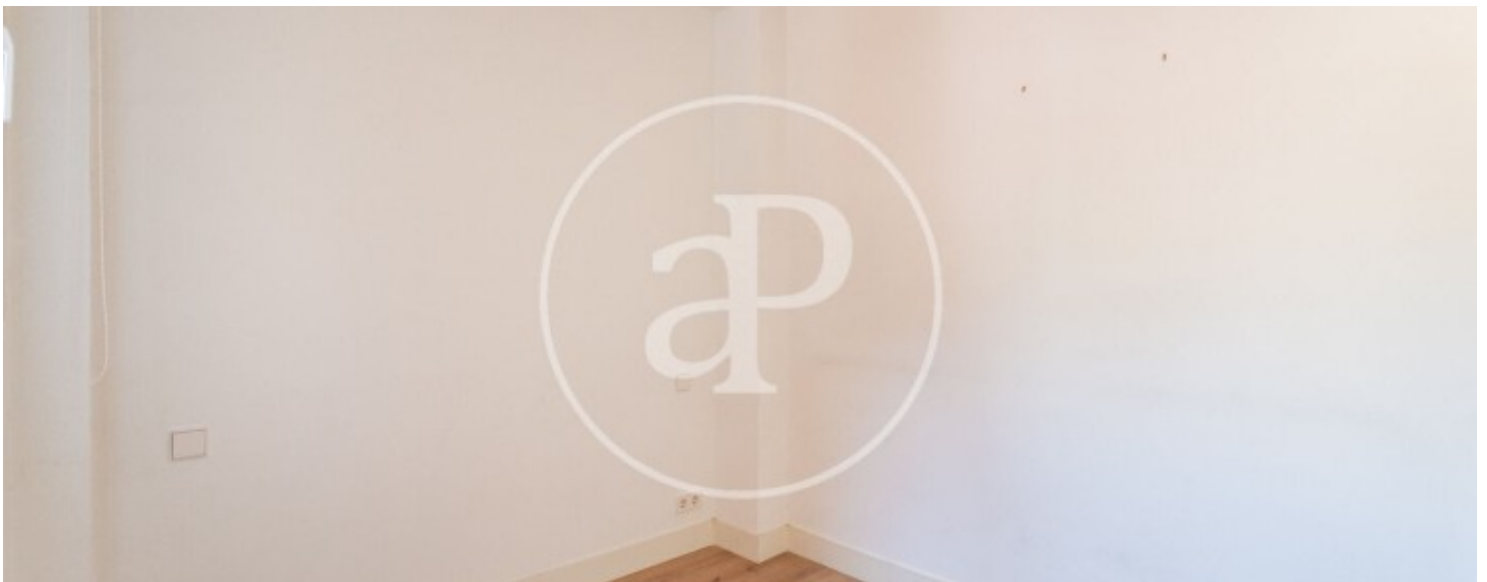
Vallehermoso, Madrid

REF. VM2607030



Vallehermoso, Madrid

REF. VM2607030



Vallehermoso, Madrid

REF. VM2607030



Vallehermoso, Madrid

REF. VM2607030



The information about any property is not binding to any offer or contract. Any verbal or written declaration made by aProperties with regards to the value or condition of the property should not be considered accurate or factual. The pictures make reference to some parts of the property at the times that they were taken. The areas, dimensions and distances that are given are approximate and should be checked by the client. The images are computer generated and are just an approximate indication of the real appearance of the property; these may change at any time. The information with regards to the property may also change at any time.

For **more information** or
to make an appointment

apropertiesmadrid@aproperties.es
Tel: 91 800 54 65
www.aproperties.es