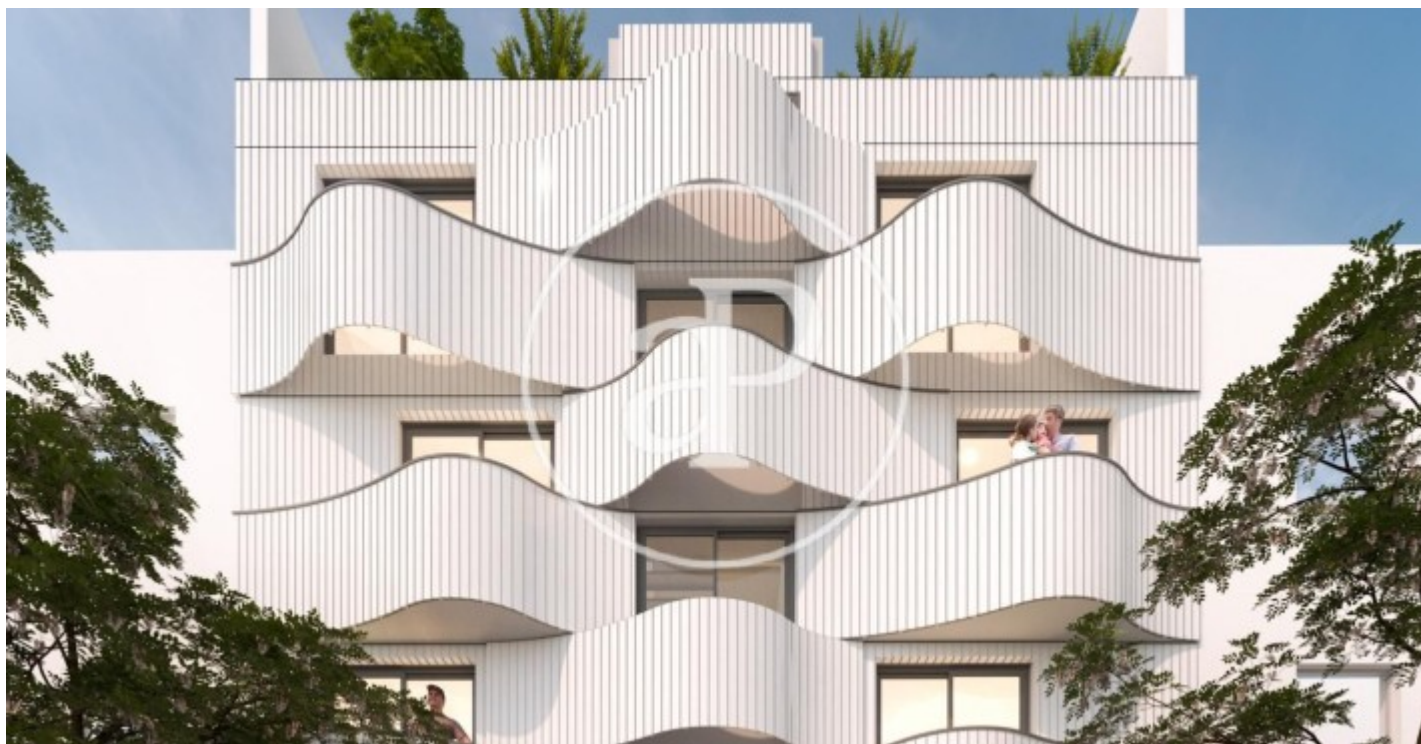


(Valdeacederas)

Ref: ONM2204007



New building for sale in Madrid

New development in the Berruguete neighbourhood. The development has 8 dwellings with 1, 2 and 3 bedrooms with 1 and 2 bathrooms and 4 parking spaces in the basement. Hydraulic lift with stop in all homes. All homes have 1.45 m² balconies, 9.5 m² terraces on the first floor and the penthouses have 11.3 m² terraces. The price includes 7 storage rooms. The finishes of the homes will be by the firm Porcelanosa. About the area: Tetuán - Berruguete Berruguete is a neighbourhood located in the north of Madrid (district of Tetuán), close to the new development of "Renazca", with very good communications and services and next to "las torres de tetuán". Main urban development close to the neighbourhood: "Renazca". The project is the renovation of the business block of Madrid that joins Nuevos Ministerios with the Santiago Bernabéu. It will have a large central green area where the priority will be pedestrians, it will improve the circulation of cars through underground roads and it will also recover old canals for the reuse of water.

Madrid / Valdeacederas

Unit pr EDIFICIO COMPLETO DE OBRA NUEVA
Completion Q4 2024

FEATURES

Surface 700 m²

- ✓ Heating
- ✓ Boxroom
- ✓ AACC
- ✓ Lift
- ✓ Has parking

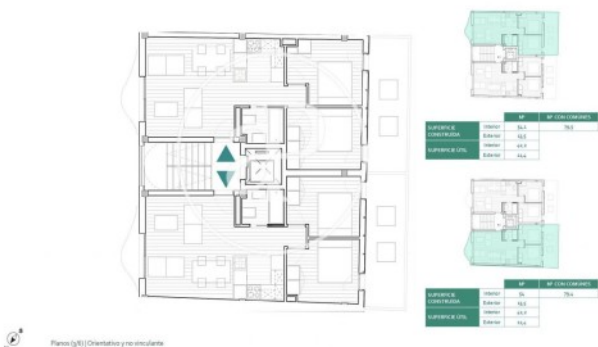
Price 2,

(Valdeacederas)

Ref: ONM2204007



PLANOS 1. PLANTA SÓTANO 1, 2. PLANTA BAJA 1, 3. PLANTA 1ª, 4. PLANTA 2ª, 5. PLANTA 3ª, 6. PLANTA 4ª



PLANOS 1. PLANTA SÓTANO 1, 2. PLANTA BAJA 1, 3. PLANTA 1ª, 4. PLANTA 2ª, 5. PLANTA 3ª, 6. PLANTA 4ª



PLANOS 1. PLANTA SÓTANO 1, 2. PLANTA BAJA 1, 3. PLANTA 1ª, 4. PLANTA 2ª, 5. PLANTA 3ª, 6. PLANTA 4ª



PLANOS 1. PLANTA SÓTANO 1, 2. PLANTA BAJA 1, 3. PLANTA 1ª, 4. PLANTA 2ª, 5. PLANTA 3ª, 6. PLANTA 4ª



(Valdeacederas)

Ref: ONM2204007

PLANOS

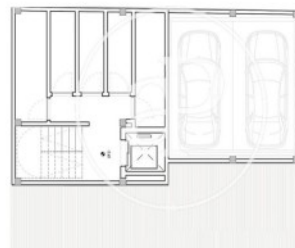
1. PLANTA SÓTANO 2. PLANTA BAJA 3. PLANTA 1ª 4. PLANTA 2ª 5. PLANTA 3ª 6. PLANTA 4ª



Plano (a) Orientativo y no vinculante

PLANOS

1. PLANTA SÓTANO 2. PLANTA BAJA 3. PLANTA 1ª 4. PLANTA 2ª 5. PLANTA 3ª 6. PLANTA 4ª



Plano (a) Orientativo y no vinculante

The information about any property is not binding to any offer or contract. Any verbal or written declaration made by aProperties with regards to the value or condition of the property should not be considered accurate or factual. The pictures make reference to some parts of the property at the times that they were taken. The areas, dimensions and distances that are given are approximate and should be checked by the client. The images are computer generated and are just an approximate indication of the real appearance of the property; these may change at any time. The information with regards to the property may also change at any time.

Contact us today for more information or to arrange a viewing

Tel: 91 800 54 65

apropertiesmadrid@aproperties.es

<https://www.aproperties.es>