

Valdeacederas, Madrid

REF. AM2411027

Flat for rent in Paseo de la Dirección.

Features

- ✓ Views
- ✓ Furnished
- ✓ Terrace
- ✓ Pool
- ✓ Lift
- ✓ Concierge
- ✓ Heating
- ✓ AACC
- ✓ Backyard
- ✓ Gym
- ✓ Security
- ✓ Has parking

Price
2,300 €

Surface
60 m²

Bedroom
1

Bathroom
1



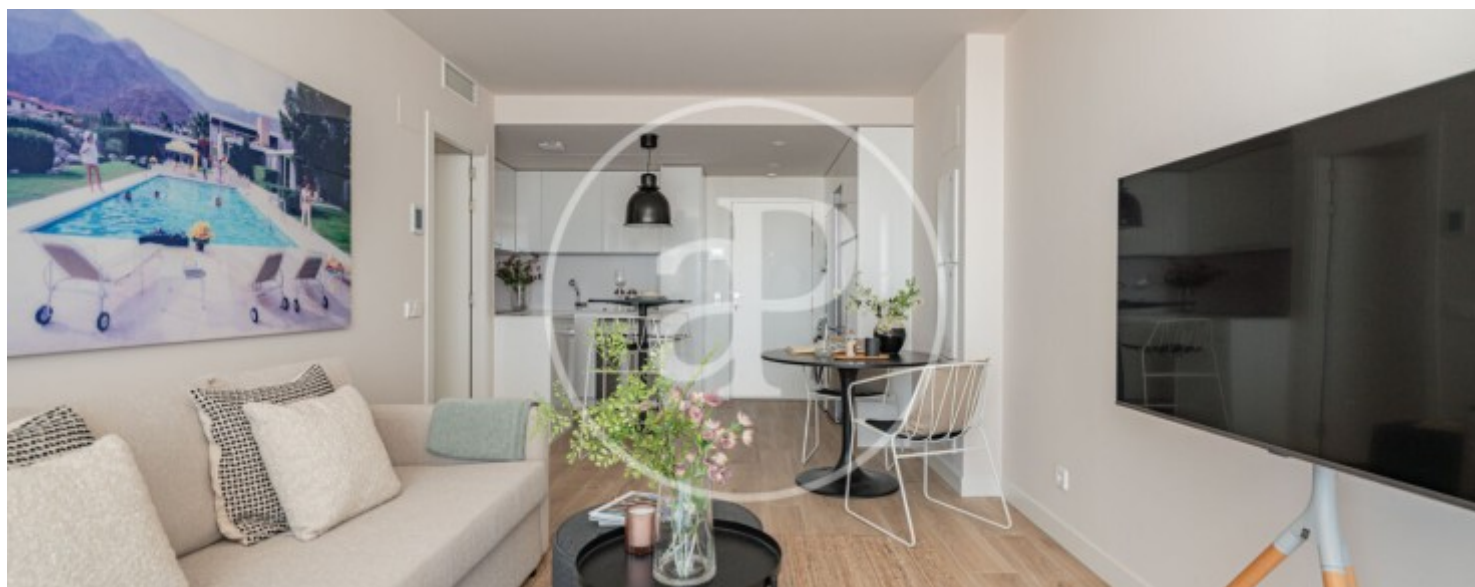
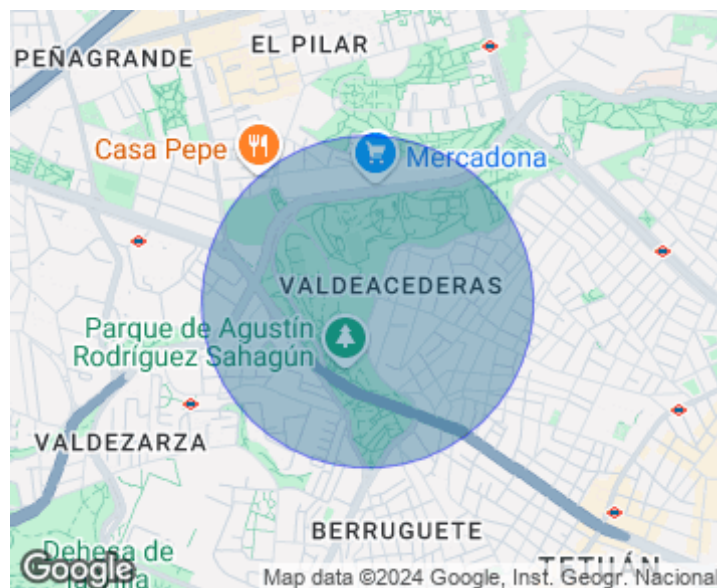
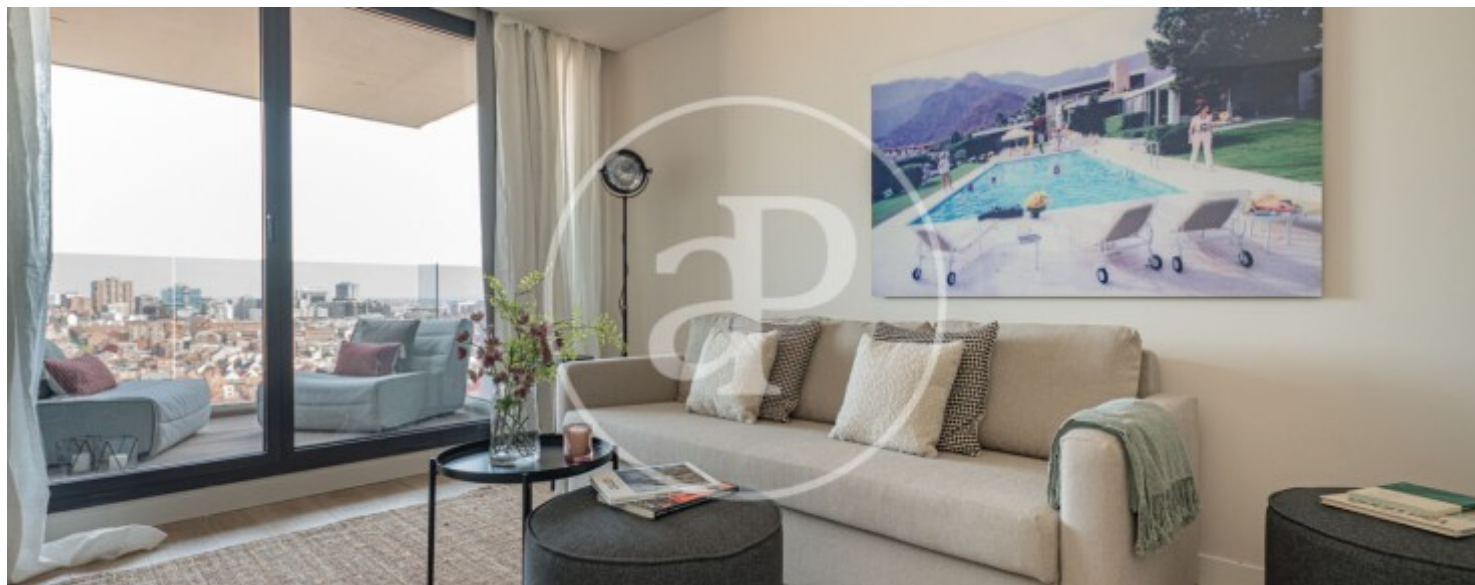
The house has a fully equipped kitchen and top quality next to a living room of 35m2 with a large window perfect to efficiently take advantage of all the hours of light that gives us the day and exit to the terrace, from the living room we have access to the hallway that leads to the master bedroom with en suite bathroom of first quality and fully equipped, also has a large window that allows you to enjoy spectacular views. The property has underfloor heating, air conditioning, storage room and garage. On the second floor of the building, facing west, a communal swimming pool has been designed, surrounded by plants and gardens; and on the 25th floor, a swimming pool with glass front, solarium and a Lounge area, which completes the recreational offer of water and sun, exclusive for the owners of the

property. In addition to this, residents will enjoy a concierge with services similar to a hotel, coworking areas, gastroteca, gym, sauna, urban orchard, gardens ... It comes fully furnished and with everything you need to move in. Can you imagine living here?

Contact us,
we will be happy to assist you,
to offer you more details and information.

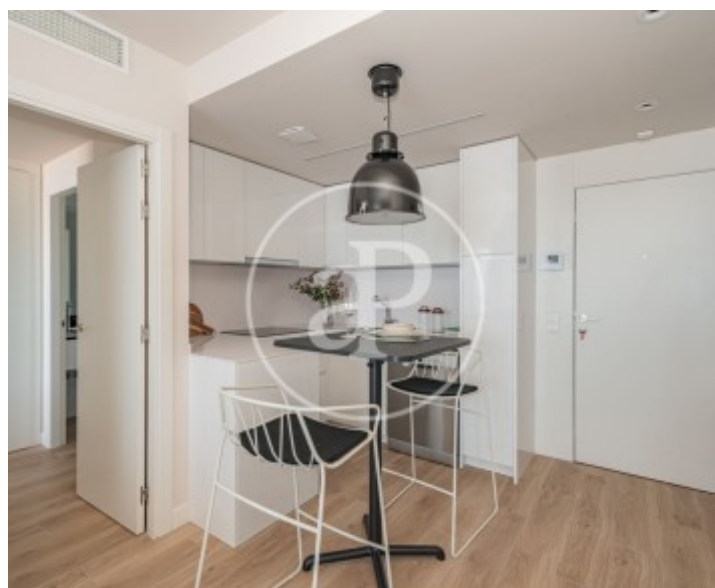
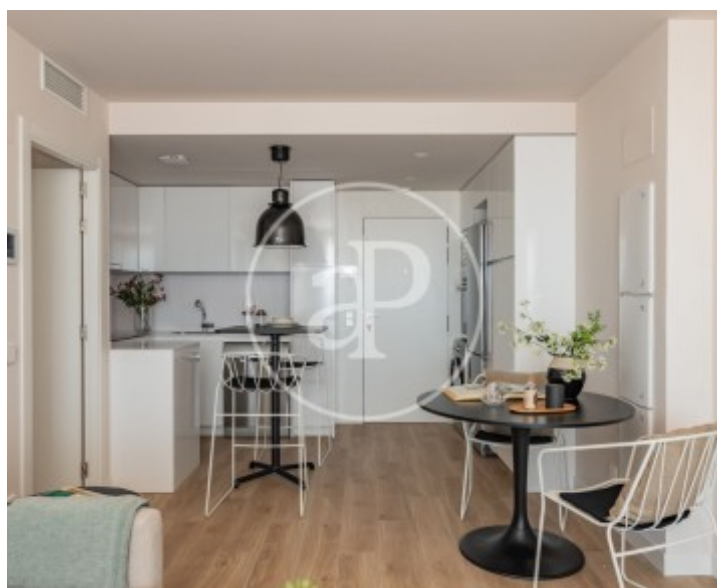
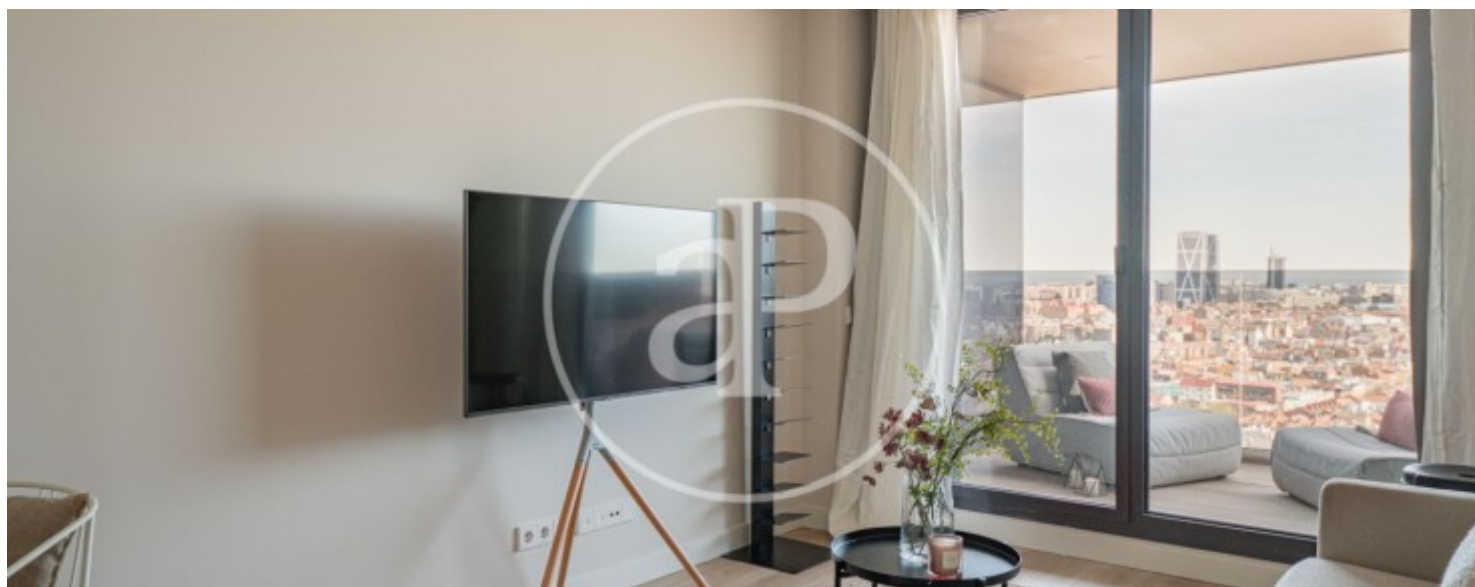
Valdeacederas, Madrid

REF. AM2411027



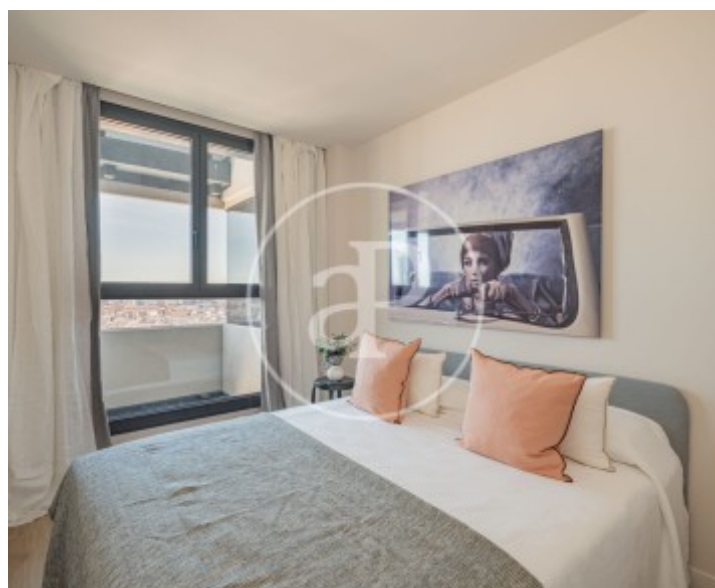
Valdeacederas, Madrid

REF. AM2411027



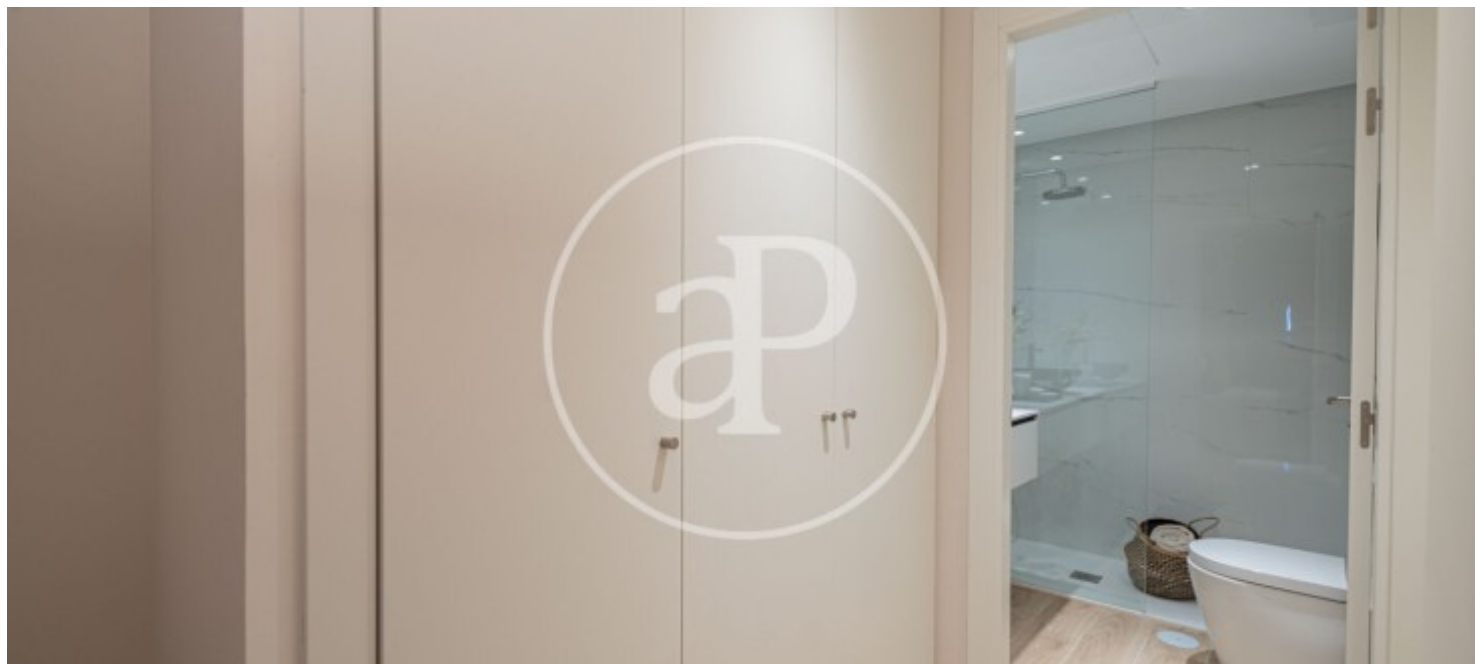
Valdeacederas, Madrid

REF. AM2411027



Valdeacederas, Madrid

REF. AM2411027



The information about any property is not binding to any offer or contract. Any verbal or written declaration made by aProperties with regards to the value or condition of the property should not be considered accurate or factual. The pictures make reference to some parts of the property at the times that they were taken. The areas, dimensions and distances that are given are approximate and should be checked by the client. The images are computer generated and are just an approximate indication of the real appearance of the property; these may change at any time. The information with regards to the property may also change at any time.

For **more information** or
to make an appointment

apropertiesmadrid@aproperties.es
Tel: 91 800 54 65
www.aproperties.es