

Valdeacederas, Madrid

REF. AM2406072

Flat for rent in Valdeacederas (Madrid)

Features

- ✓ Heating
- ✓ AACC
- ✓ Concierge
- ✓ Furnished
- ✓ Lift

Price
6,200 €

Surface
300 m²

Bedrooms
5

Bathrooms
3



SEASONAL CONTRACT.

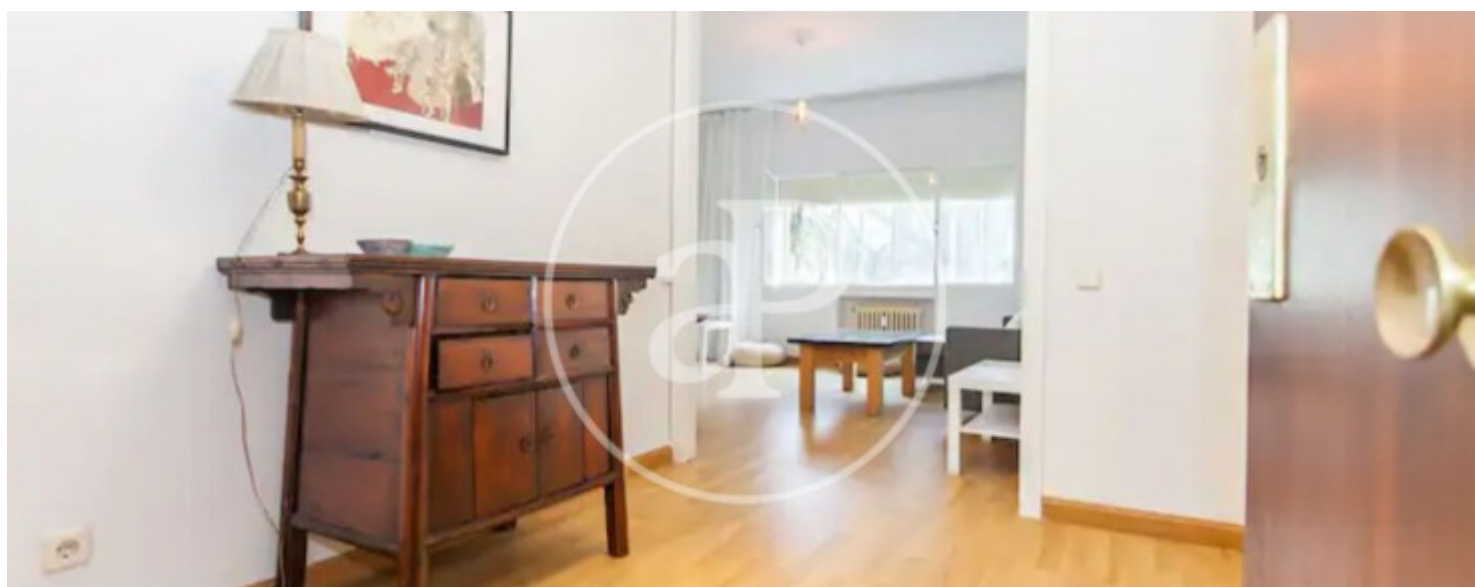
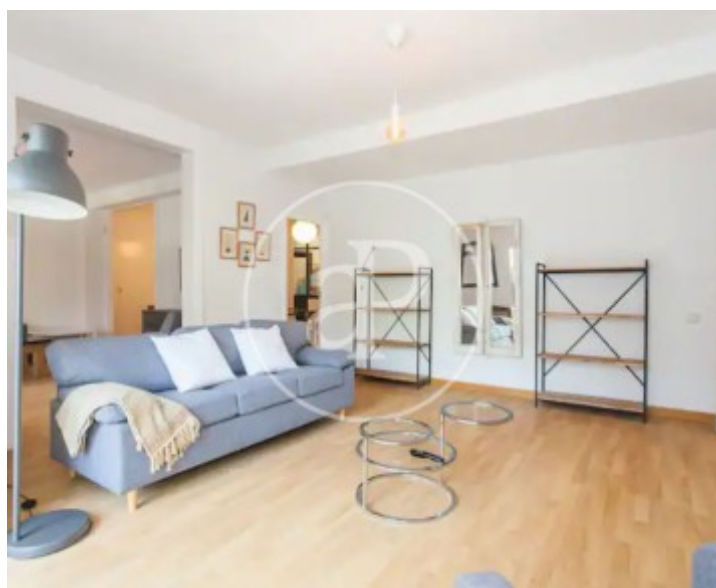
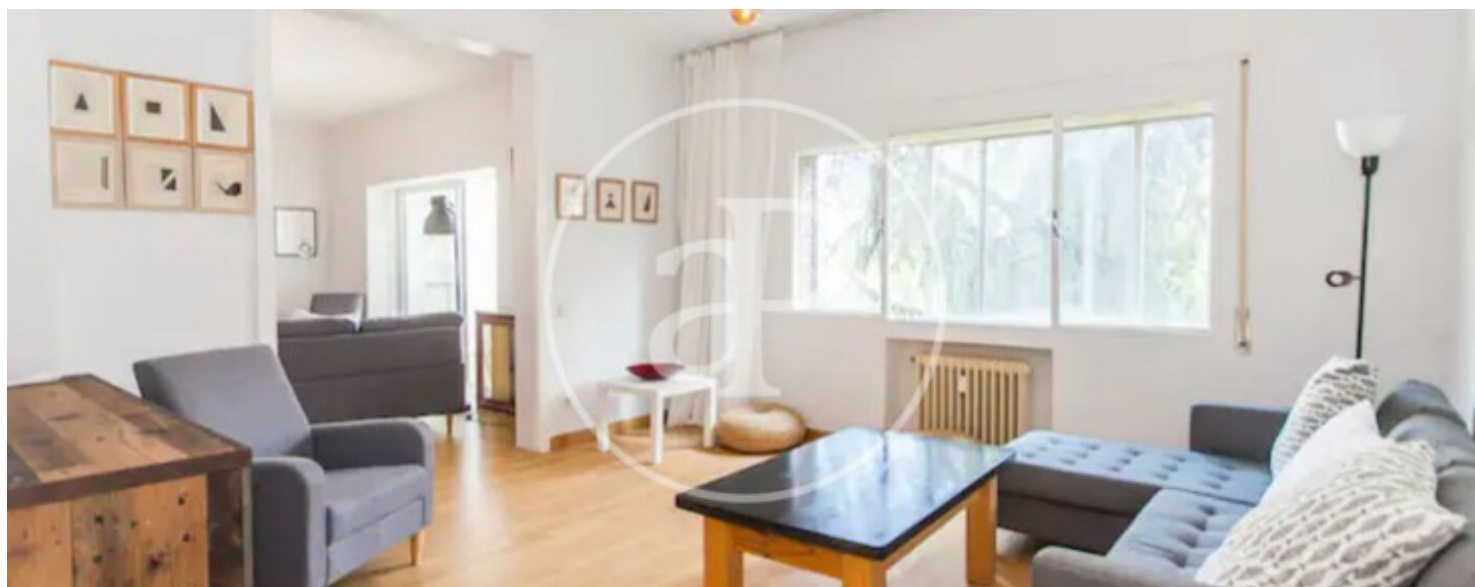
IDEAL FOR STUDENTS. Wonderful and spacious apartment in Paseo de la Castellana, a few minutes walk from the Five Towers, the Instituto de Empresa, Plaza de Castilla, the Santiago Bernabeu Stadium and the financial area of AZCA. This spacious apartment of approximately 300 m² is completely exterior, offering abundant natural light and breathtaking views. The property features: 2 living rooms: One for watching TV and one for reading. 2 Covered terraces: One in the living room and one in the kitchen. Independent Dining Room Spacious and well equipped kitchen with office and access to a terrace. 5 Spacious Bedrooms: Each with TV, desk, ample

storage space and double beds of 150 and 160 cm. 3 Full Bathrooms: One with bathtub and two with showers. Newly renovated, this luxurious apartment is designed for large families looking for comfort and space. It is a real gem in a privileged location. Located on a second floor with elevator, this apartment offers a very quiet and bright environment. Its 300 m² are distributed in such a way that every corner is maximized to ensure comfort and functionality. Can you imagine living here?

Contact us,
we will be happy to assist you,
to offer you more details and information.

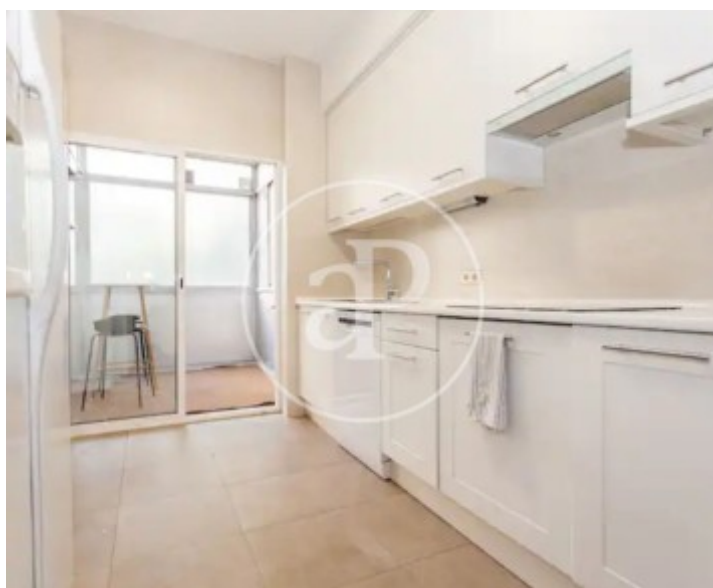
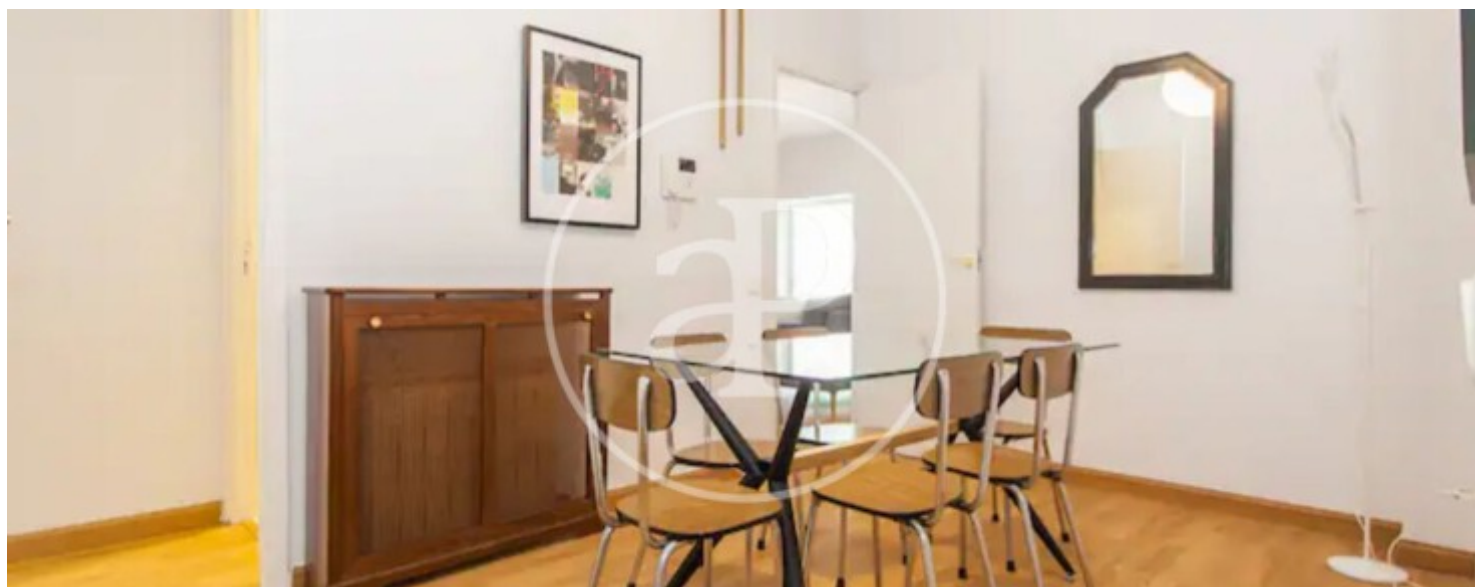
Valdeacederas, Madrid

REF. AM2406072



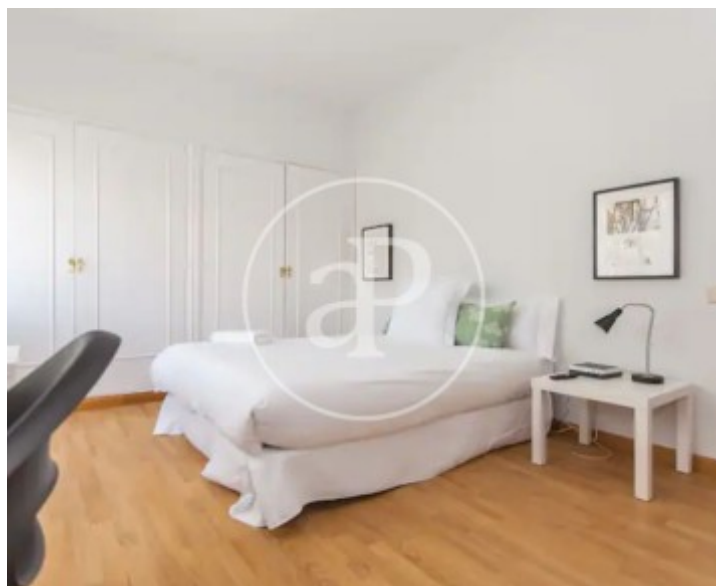
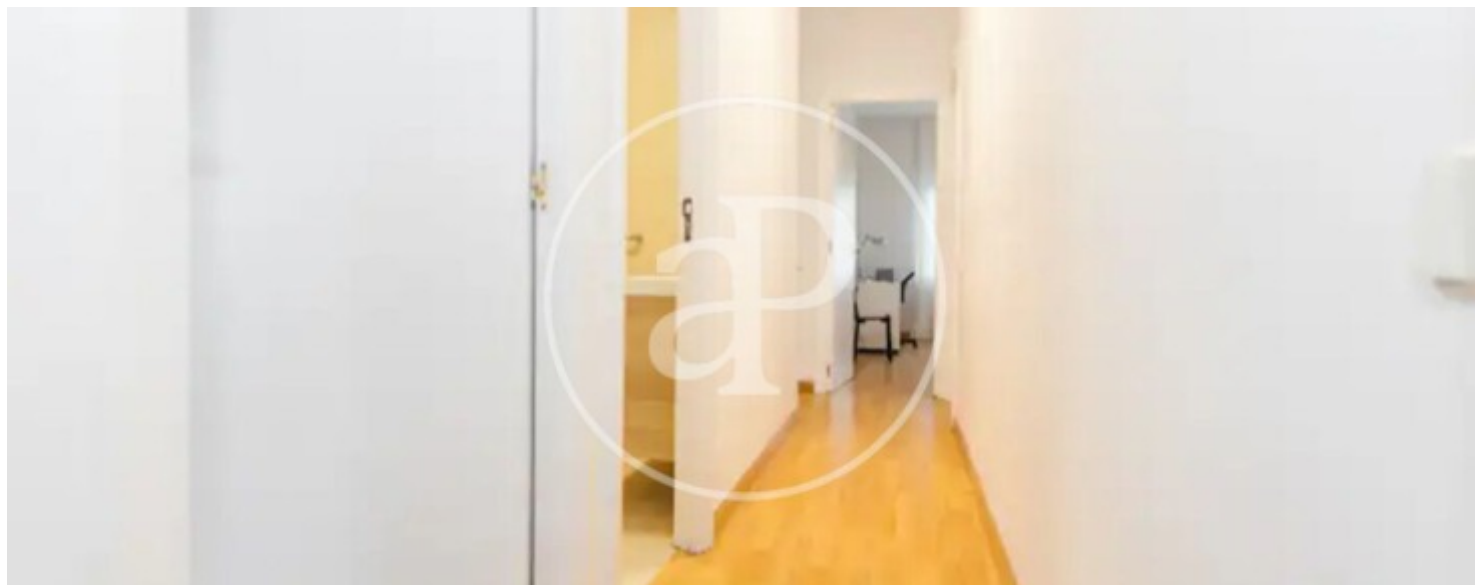
Valdeacederas, Madrid

REF. AM2406072



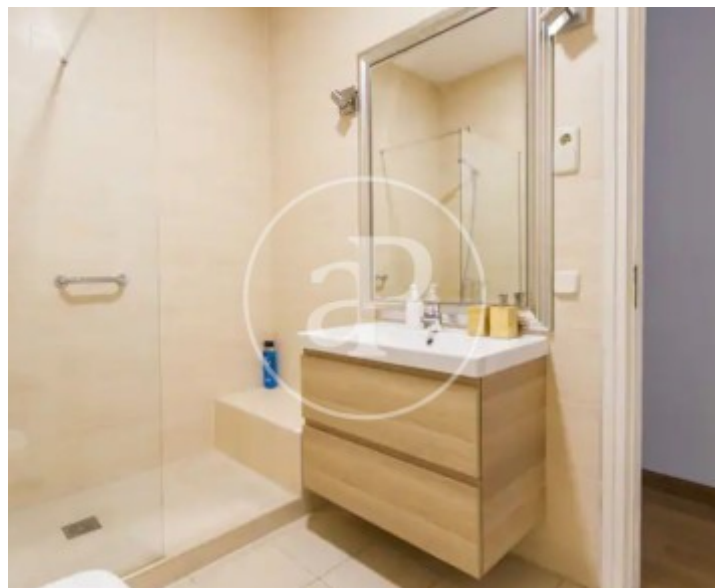
Valdeacederas, Madrid

REF. AM2406072



Valdeacederas, Madrid

REF. AM2406072



The information about any property is not binding to any offer or contract. Any verbal or written declaration made by aProperties with regards to the value or condition of the property should not be considered accurate or factual. The pictures make reference to some parts of the property at the times that they were taken. The areas, dimensions and distances that are given are approximate and should be checked by the client. The images are computer generated and are just an approximate indication of the real appearance of the property; these may change at any time. The information with regards to the property may also change at any time.

For **more information** or
to make an appointment

apropertiesmadrid@aproperties.es
Tel: 91 800 54 65
www.aproperties.es