

Sol, Madrid

REF. VM2512046

# Apartment for sale in Sol

## Features

- ✓ Heating
- ✓ AACC
- ✓ Lift

Price  
**650,000 €**

Surface  
**71 m<sup>2</sup>**

Bedroom  
**1**

Bathroom  
**1**



**Aproperties sells cozy 1 bedroom apartment, completely renovated next to the Plaza de Jacinto Benavente, in the center of Madrid.**

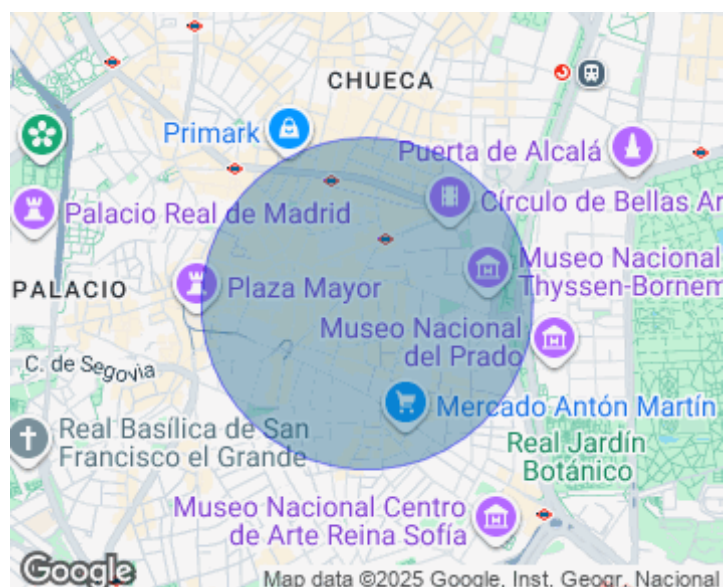
The house has balconies to the street that bring great luminosity thanks to its excellent west orientation. It has a comfortable and spacious living room, independent kitchen equipped with appliances, bedroom with good ventilation and modern bathroom. It is an ideal home for those looking to live in the heart of Madrid with all comforts: renovated floors, updated carpentry and a functional distribution that makes the most of the space. The area offers a vibrant urban life, surrounded by shops, theaters, restaurants, supermarkets and a great

connection to public transport (metro, buses and local). Located between the Barrio de las Letras and Sol, a few steps from emblematic places such as the Puerta del Sol, the Plaza Mayor or the Paseo del Prado, this apartment is perfect for both habitual residence and investment due to its high demand in rent. Do not miss this opportunity to live in one of the areas with more history and dynamism of the city. Can you imagine living here?

**Contact us,**  
we will be happy to assist you,  
to offer you more details and information.

Sol, Madrid

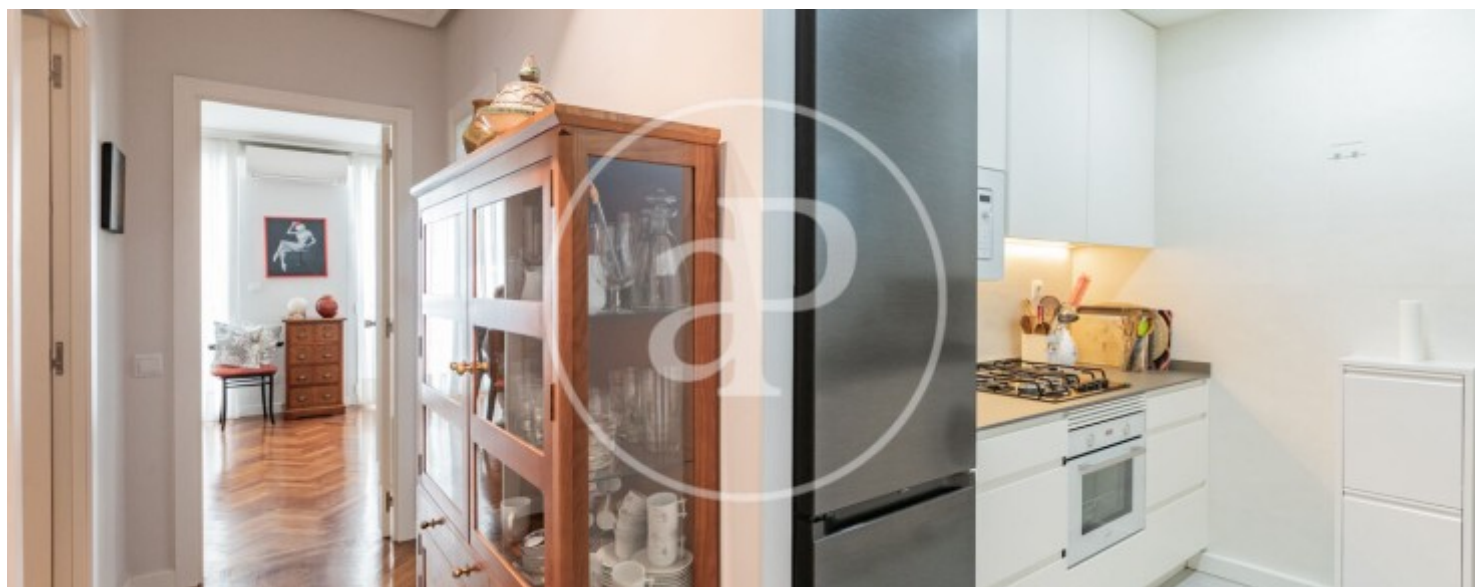
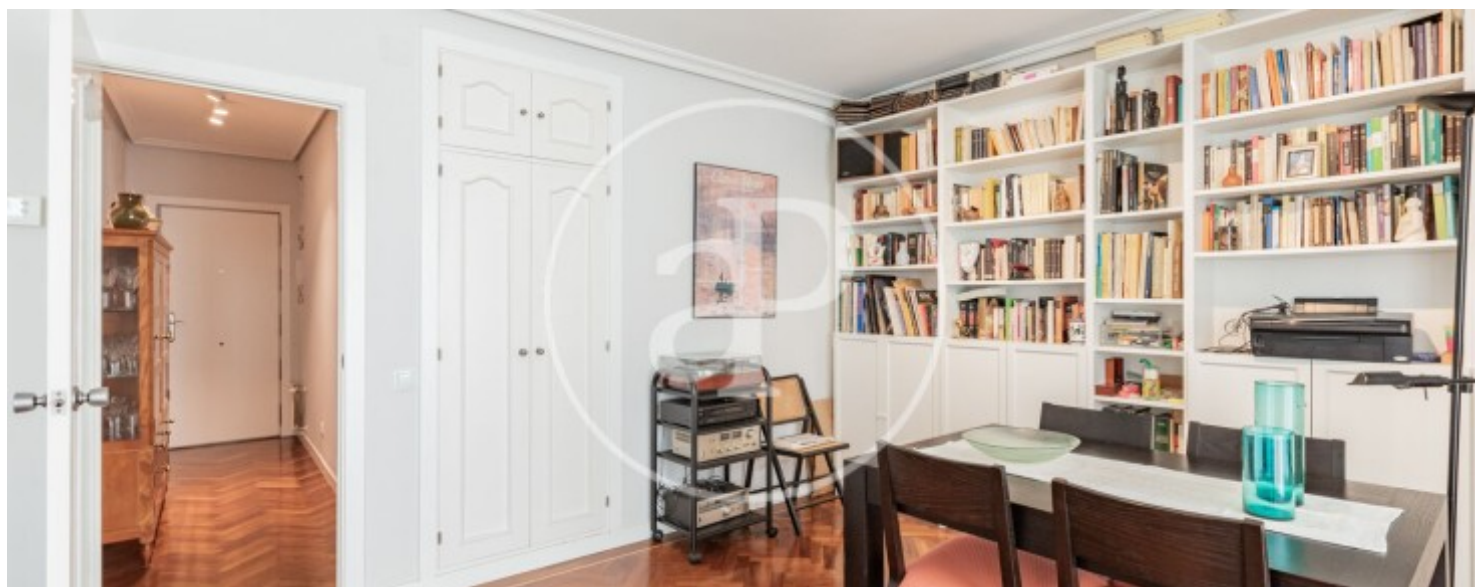
REF. VM2512046





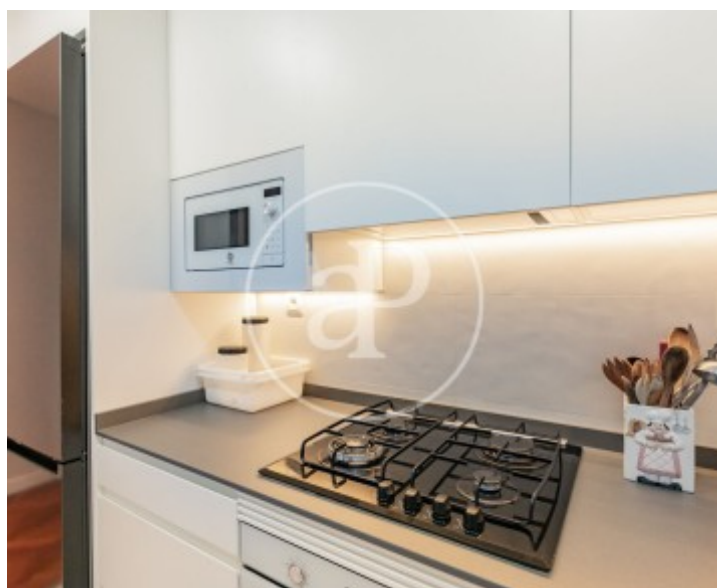
Sol, Madrid

REF. VM2512046



Sol, Madrid

REF. VM2512046





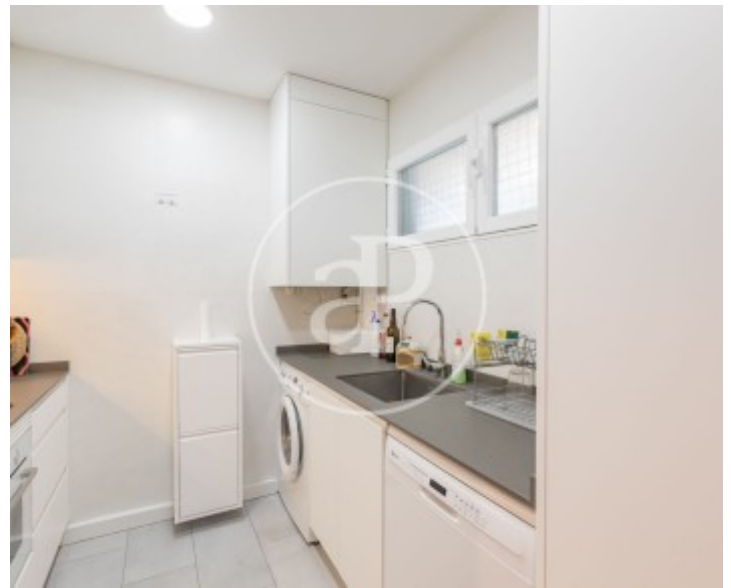


**APROPERTIES**  
REAL ESTATE

Calle Serrano 60  
28001 Madrid  
T. 91 800 54 65  
[www.aproperties.es](http://www.aproperties.es)

Sol, Madrid

REF. VM2512046



The information about any property is not binding to any offer or contract. Any verbal or written declaration made by aProperties with regards to the value or condition of the property should not be considered accurate or factual. The pictures make reference to some parts of the property at the times that they were taken. The areas, dimensions and distances that are given are approximate and should be checked by the client. The images are computer generated and are just an approximate indication of the real appearance of the property; these may change at any time. The information with regards to the property may also change at any time.

For **more information** or  
to make an appointment

[apropertiesmadrid@aproperties.es](mailto:apropertiesmadrid@aproperties.es)  
Tel: 91 800 54 65  
[www.aproperties.es](http://www.aproperties.es)