

Sol, Madrid

REF. VM1910033

Penthouse with terrace for sale in Sol (Madrid)

Features

- ✓ Views
- ✓ Heating
- ✓ AACC
- ✓ Lift

Surface

129 m²

Bedrooms

2

Bathrooms

2

Price

765,000 €



In one of the most emblematic places of Madrid, a few meters from the Gran Vía and Puerta del Sol we find this unique attic.

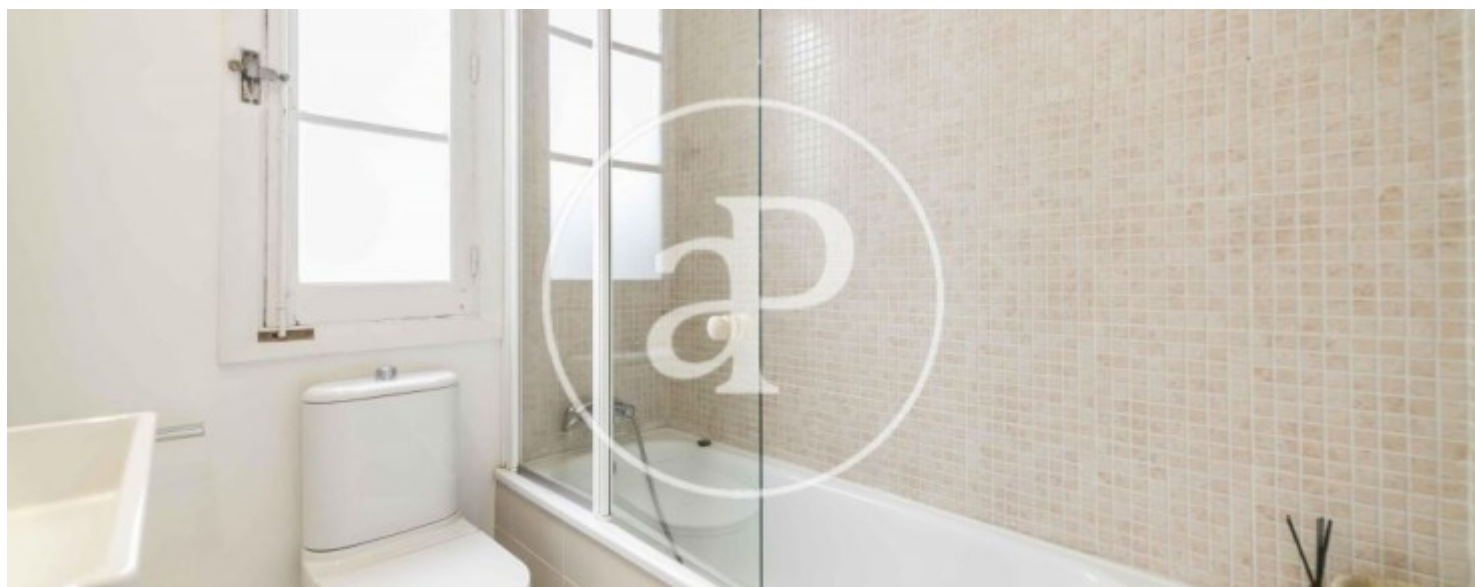
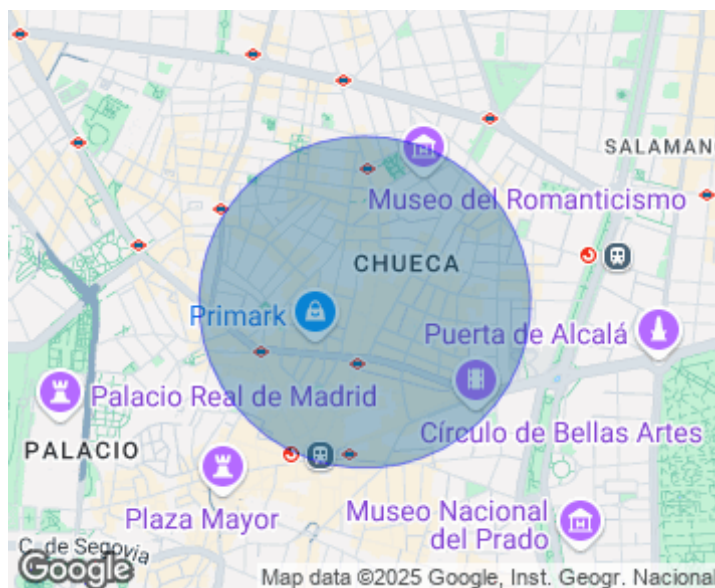
It is located on the fifth and last floor of an Art Deco building. The house has more than 100sqm and about 10sq. of terrace. From the entrance door we access a large living room distributed in two environments that borders the terrace, completely square and from where you can see the rooftops of Madrid. The property is renovated in 2015, maintaining the melis pine floor and the height of the ceilings. The kitchen, independent, is fully furnished and equipped with all appliances. From the corridor you can access the rest area, with two

bedrooms, one of them with bathroom en suite and a large second bedroom. In the rest area we also have another full bathroom. The whole house is very bright to have southeast orientation, and in the living area you can easily build a third bedroom with a balcony to the street if you need it. Gran Vía Street is one of the busiest and most requested arteries in the Capital. Crowds of theaters, cinemas, and shops fill the area with life, however, the situation of this attic allows silence and tranquility in the heart of Madrid. It is, without a doubt, a great investment to enjoy the heart...

Contact us,
we will be happy to assist you,
to offer you more details and information.

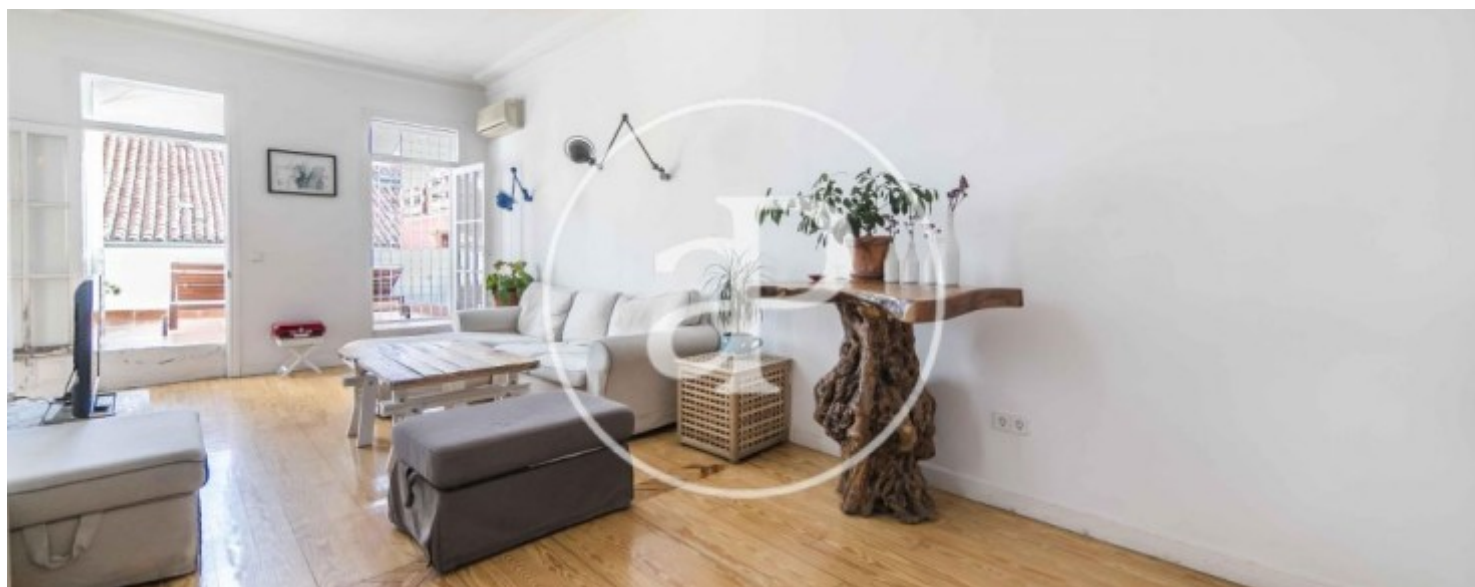
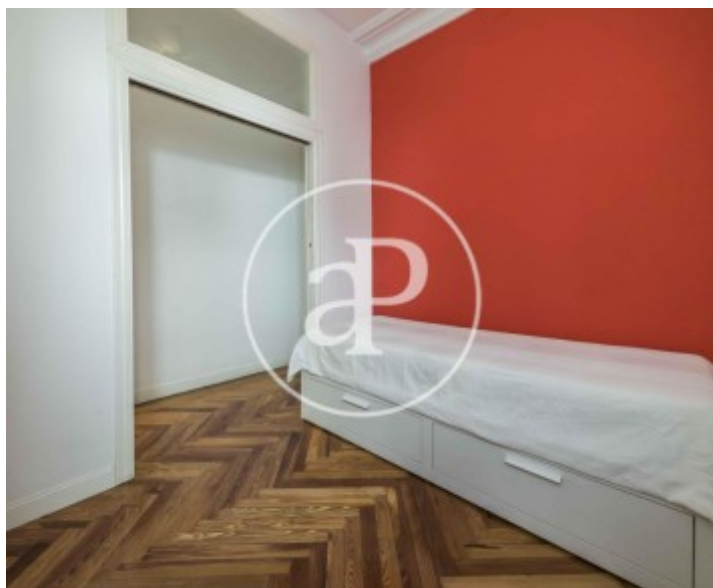
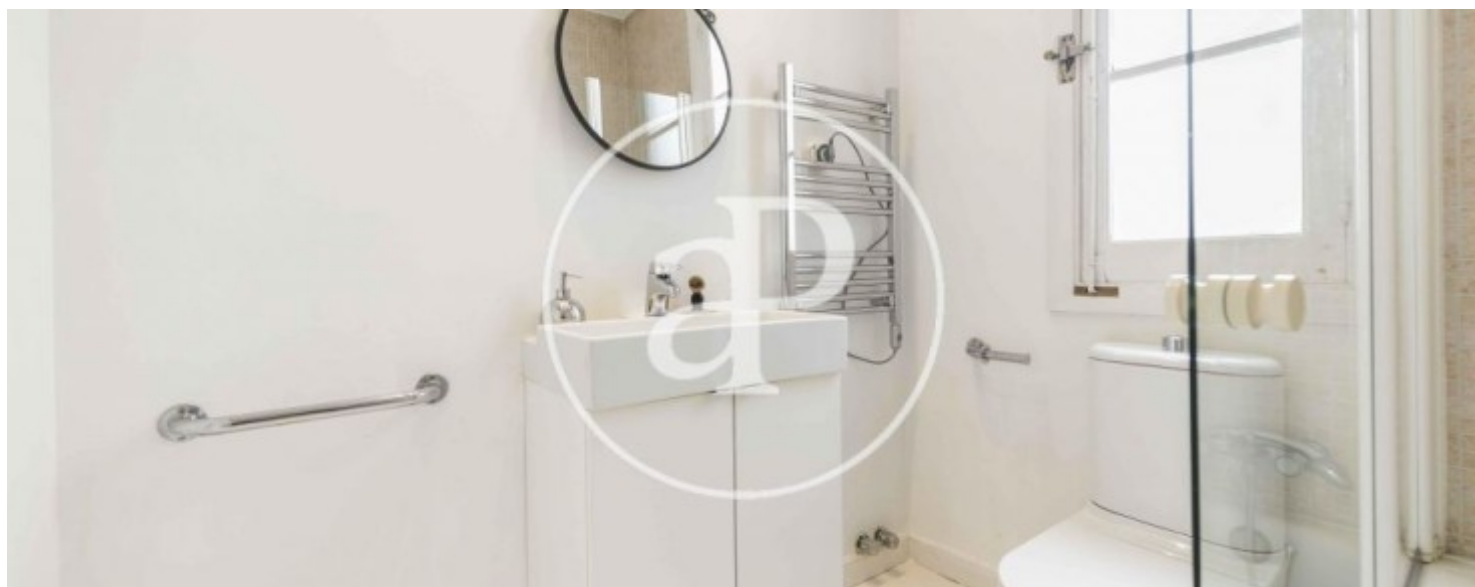
Sol, Madrid

REF. VM1910033



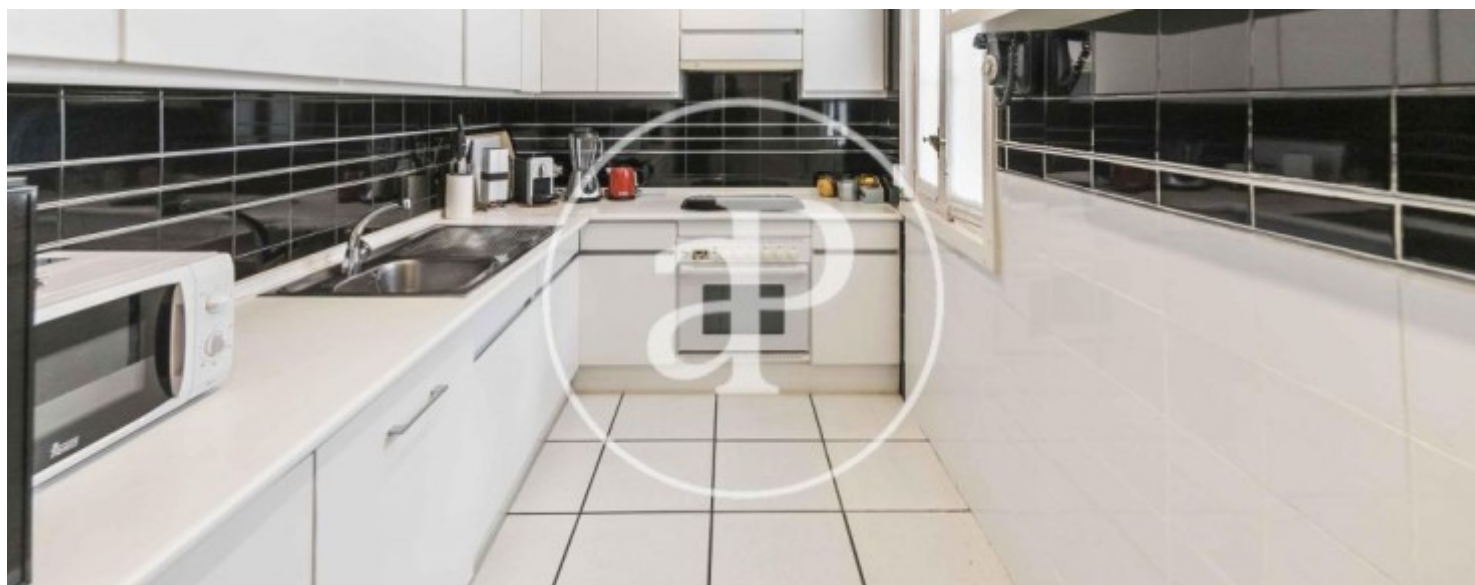
Sol, Madrid

REF. VM1910033



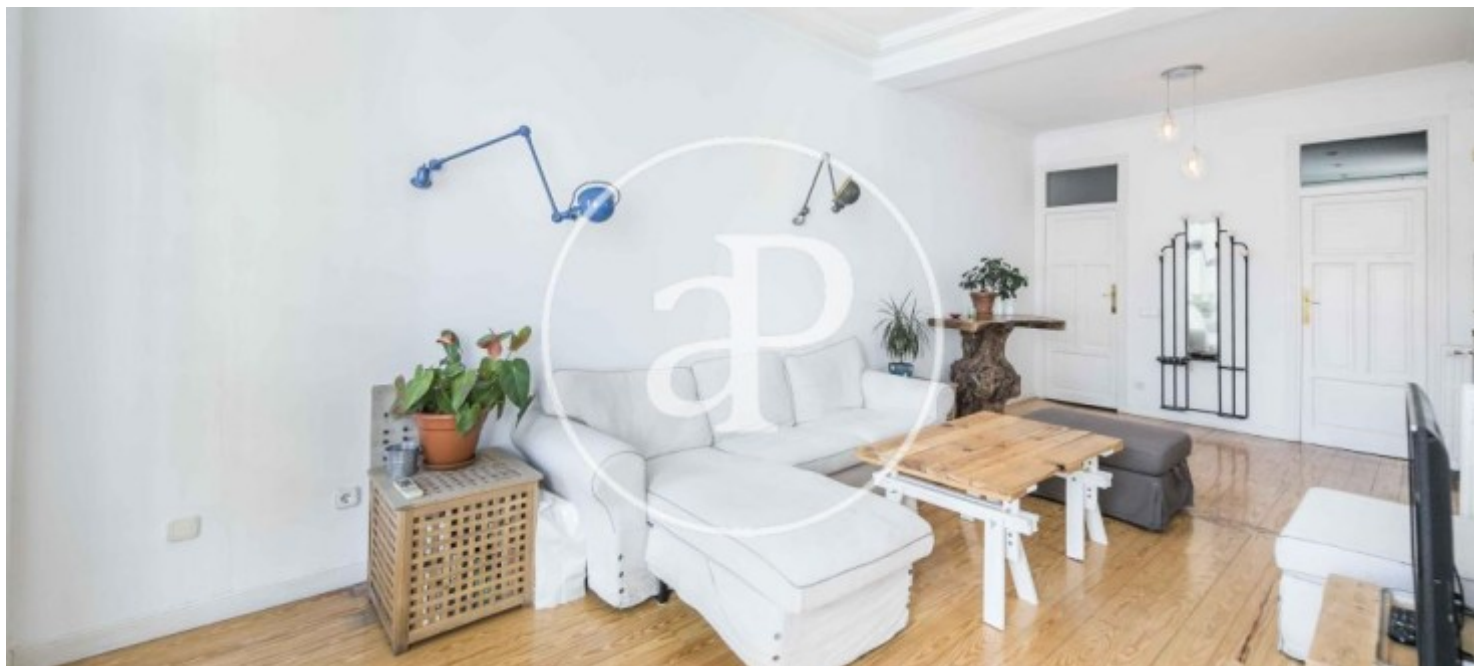
Sol, Madrid

REF. VM1910033



Sol, Madrid

REF. VM1910033



The information about any property is not binding to any offer or contract. Any verbal or written declaration made by aProperties with regards to the value or condition of the property should not be considered accurate or factual. The pictures make reference to some parts of the property at the times that they were taken. The areas, dimensions and distances that are given are approximate and should be checked by the client. The images are computer generated and are just an approximate indication of the real appearance of the property; these may change at any time. The information with regards to the property may also change at any time.

For **more information** or
to make an appointment

apropertiesmadrid@aproperties.es
Tel: 91 800 54 65
www.aproperties.es