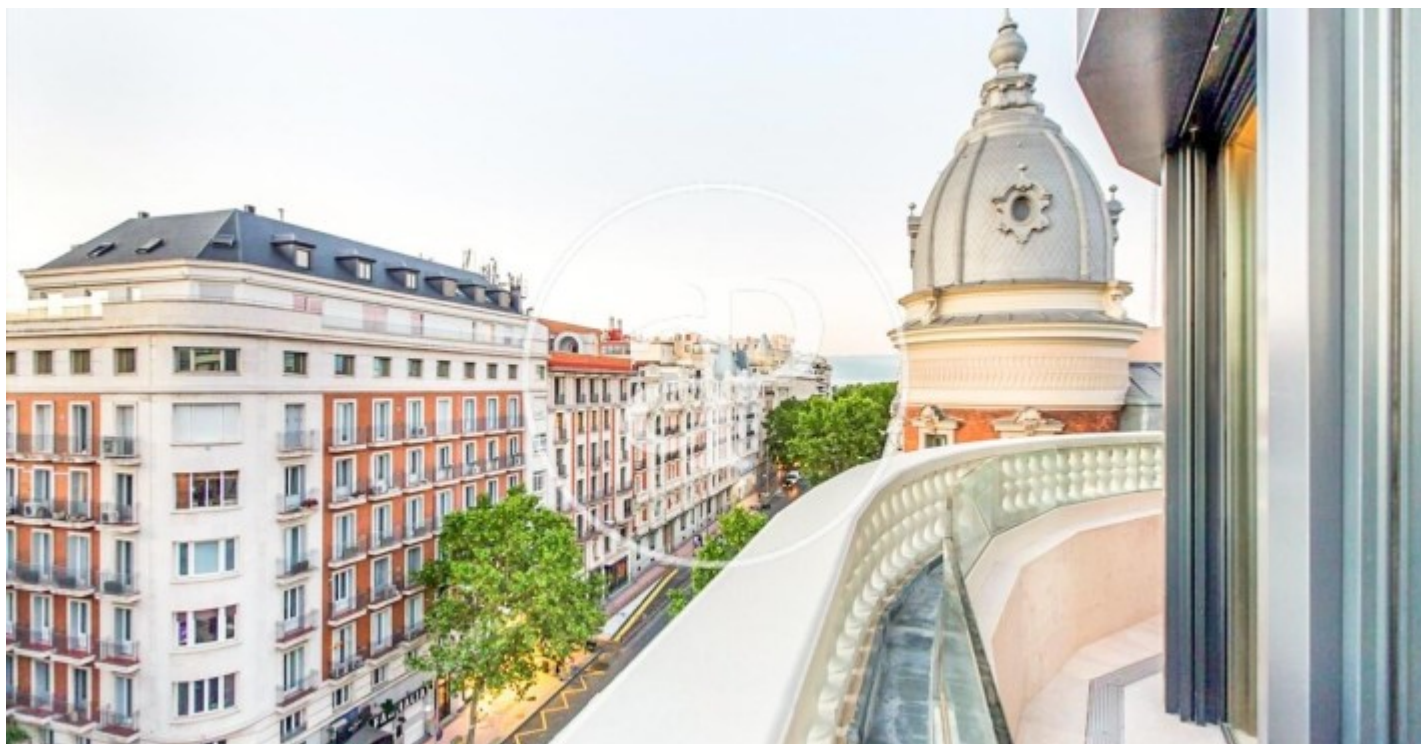


(Recoletos)

Ref: ONM2110006



## Exclusive homes in Recoletos

1,900 building fully restored by preserving the historic façade and the comprehensive interior demolition. The new building houses 8 exclusive homes, each with 2 parking spaces, 2 bike spaces and 1 storage room. In the common areas we find a vertical garden, modern works of art and a wellness area composed of: a 15-meter indoor swimming pool, gym, Jacuzzi, steam room and massage area. The chamfer configuration guarantees that all the houses are exterior, enjoying east and south orientations. In addition, the building is located a few meters from the El Retiro park. The constructed surfaces of the houses are 288sqm, 324sqm and 523sqm depending on the case. All of them have large living rooms and kitchens, en suite bedrooms with large dressing rooms and a service bedroom. They have a magnificent orientation that guarantees the sun all day and also have the highest construction qualities, among others: underfloor heating and cooling, air conditioning in all rooms, mechanical ventilation, home automation, oak flooring, Bulthaup kitchen, electrical appliances from high-end and large-format porcelain wall tiles.

Madrid / Recoletos

Surface  
288 m<sup>2</sup> - 517 m<sup>2</sup>  
Units  
4  
Completion  
Q1 2021

- |           |               |
|-----------|---------------|
| ✓ Views   | ✓ Lift        |
| ✓ Heating | ✓ Security    |
| ✓ Boxroom | ✓ Has parking |
| ✓ AACC    |               |
| ✓ Terrace |               |
| ✓ Pool    |               |
| ✓ Gym     |               |

Price from 4,650,100 €

**(Recoletos)**

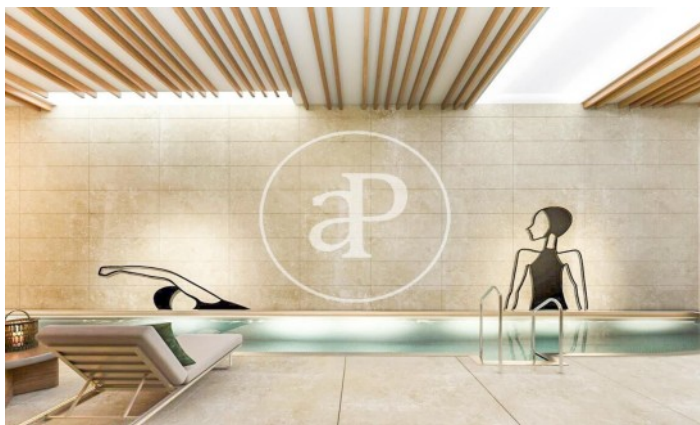
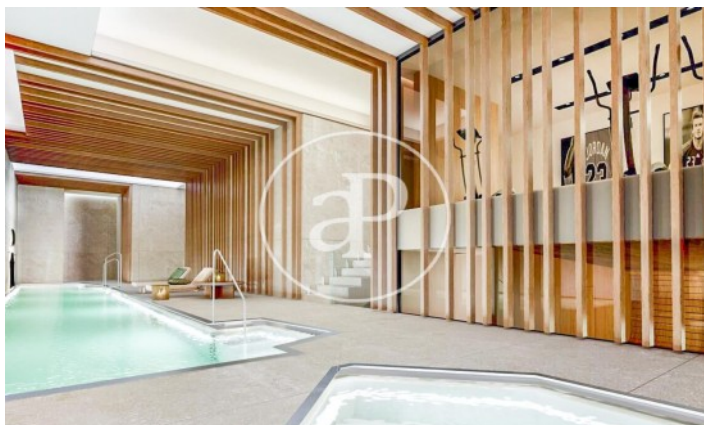
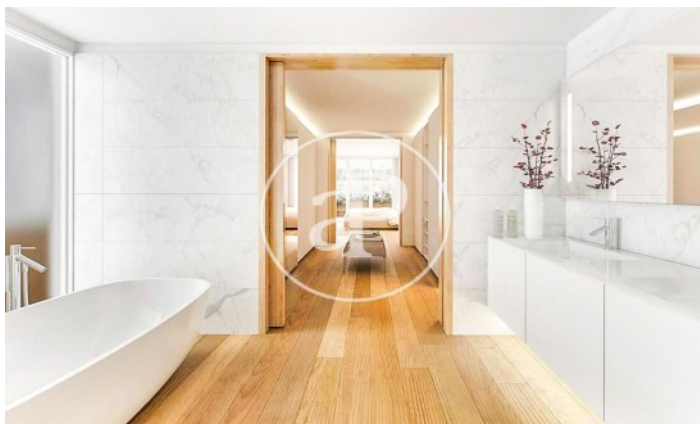
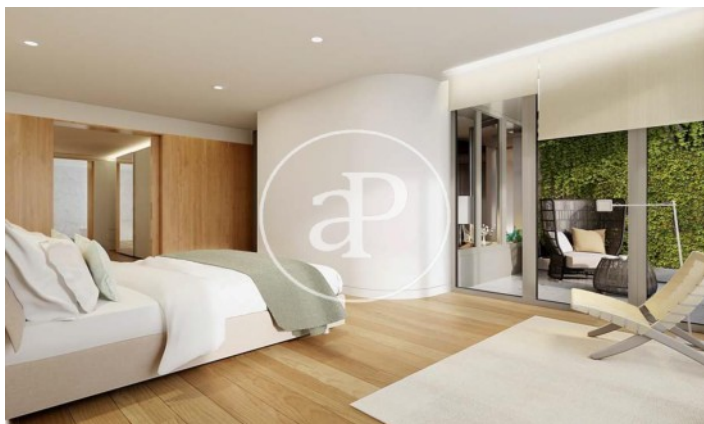
Ref: ONM2110006

## Units in this development

| Type | Unit | Surface | Bedrooms | Bathrooms | Price       | State     |
|------|------|---------|----------|-----------|-------------|-----------|
| Flat | 2° B | 324 m²  | 3        | 3         | € 4,650,100 | Available |

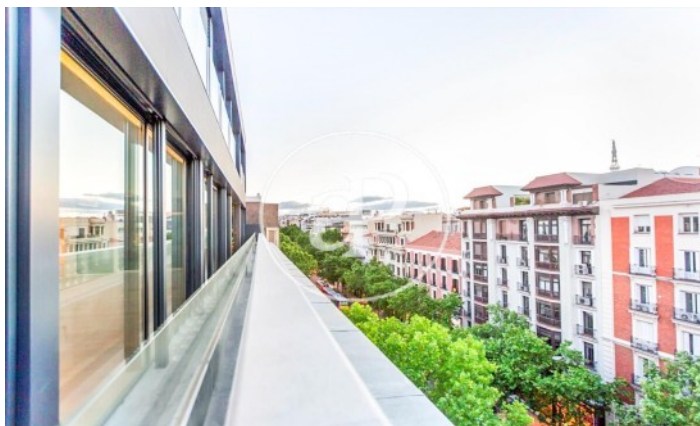
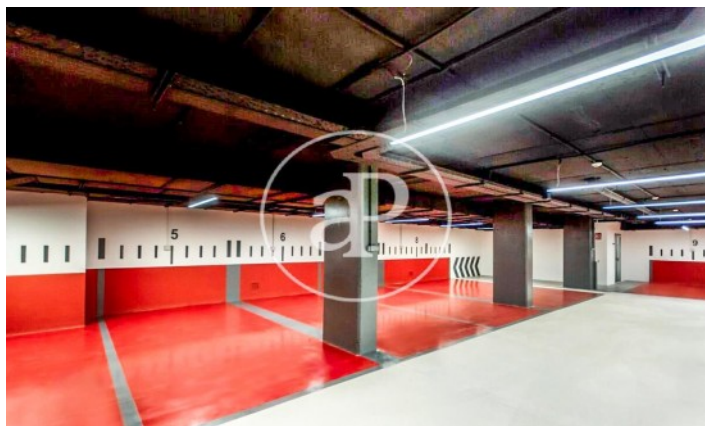
(Recoletos)

Ref: ONM2110006



(Recoletos)

Ref: ONM2110006



The information about any property is not binding to any offer or contract. Any verbal or written declaration made by aProperties with regards to the value or condition of the property should not be considered accurate or factual. The pictures make reference to some parts of the property at the times that they were taken. The areas, dimensions and distances that are given are approximate and should be checked by the client. The images are computer generated and are just an approximate indication of the real appearance of the property; these may change at any time. The information with regards to the property may also change at any time.

Contact us today for more information or to arrange a viewing

Tel: 91 800 54 65

[apropertiesmadrid@aproperties.es](mailto:apropertiesmadrid@aproperties.es)

<https://www.aproperties.es>