

Recoletos, Madrid

REF. AM2110046



## Duplex for rent with terraces in Serrano

### Features

- ✓ Views
- ✓ Heating
- ✓ Boxroom
- ✓ AACC
- ✓ Terrace
- ✓ Lift
- ✓ Concierge
- ✓ Has parking

Price

**15,000 €**

Surface

**440 m<sup>2</sup>**

Bedrooms

**5**

Bathrooms

**5**



### Exclusive duplex-penthouse in the heart of Serrano Street.

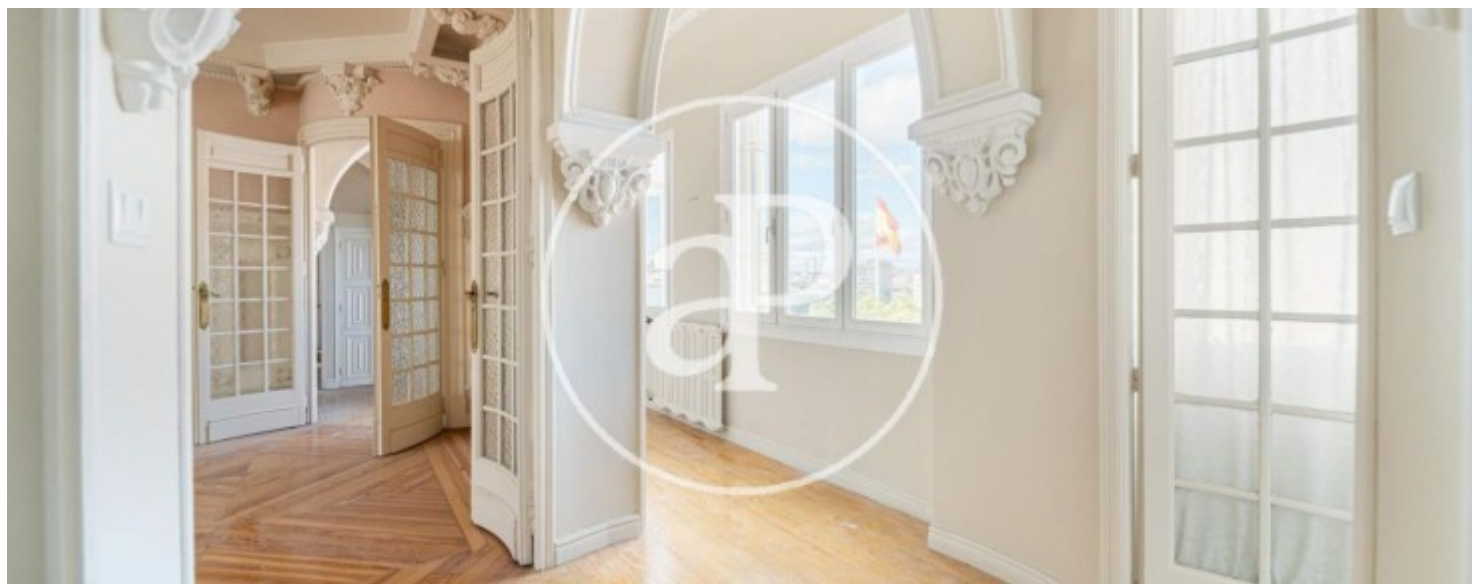
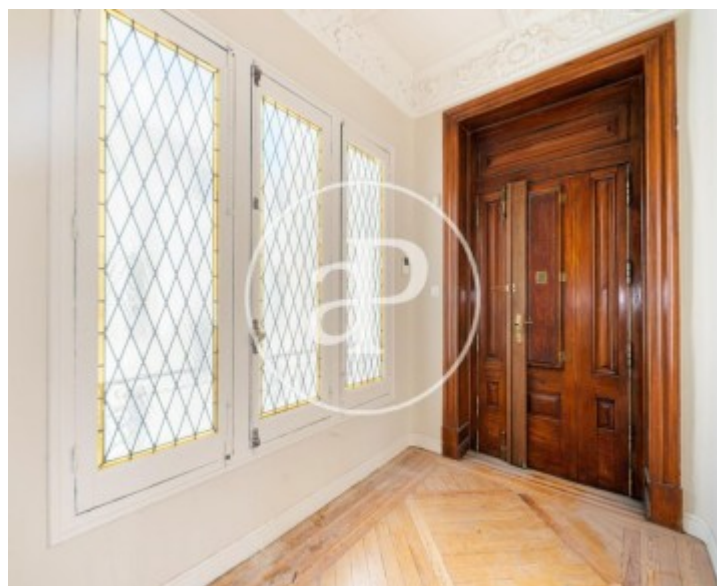
The flat consists of a large entrance hall, three large independent living rooms with access to two terraces, a large dining room with details on the walls and ceilings and a guest toilet. In the night area there are three bedrooms with en suite bathrooms, the master bedroom also has a dressing room. All three bedrooms open onto a private garden. The large kitchen has a utility room and bathroom as well as an ironing room. In the attic, there is a dressing room with bathroom, an open plan living room area with the option of a bedroom and a kitchen. With independent entrance. Central heating, porter every day

of the week, lift, storage room and a large garage of 50 metres. It is located in the best area of Barrio de Salamanca with great cultural variety, leisure and restaurants, as well as several metro and bus stops.

**Contact us,**  
we will be happy to assist you,  
to offer you more details and information.

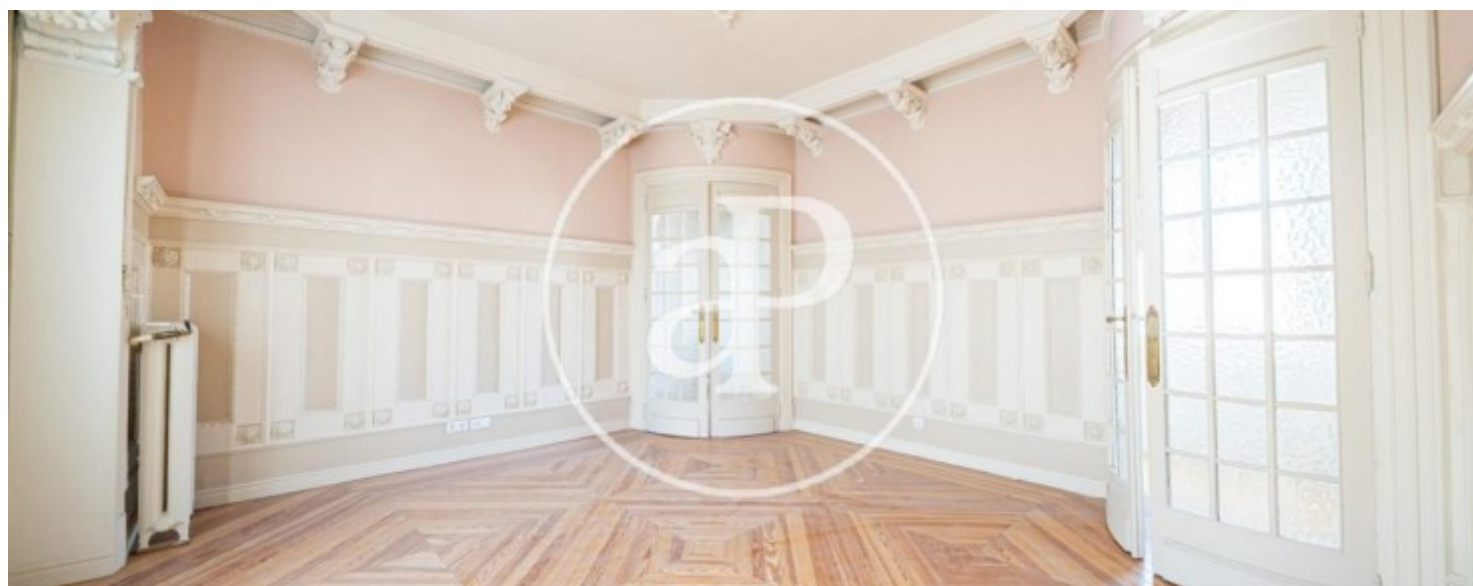
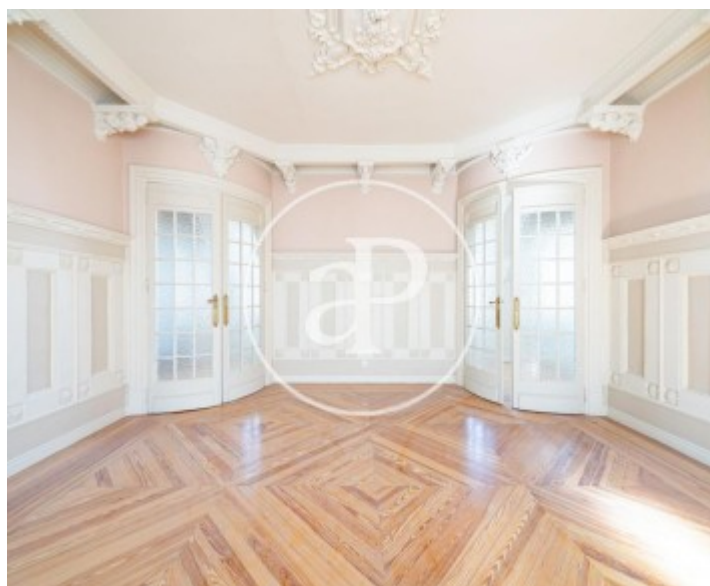
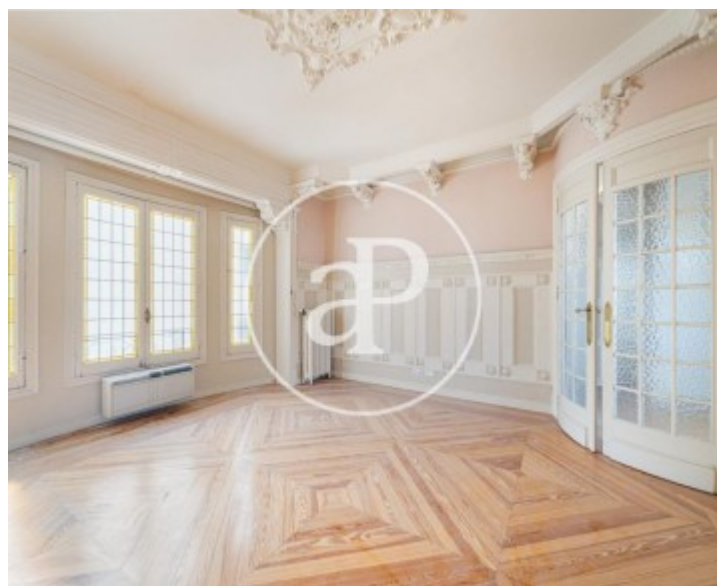
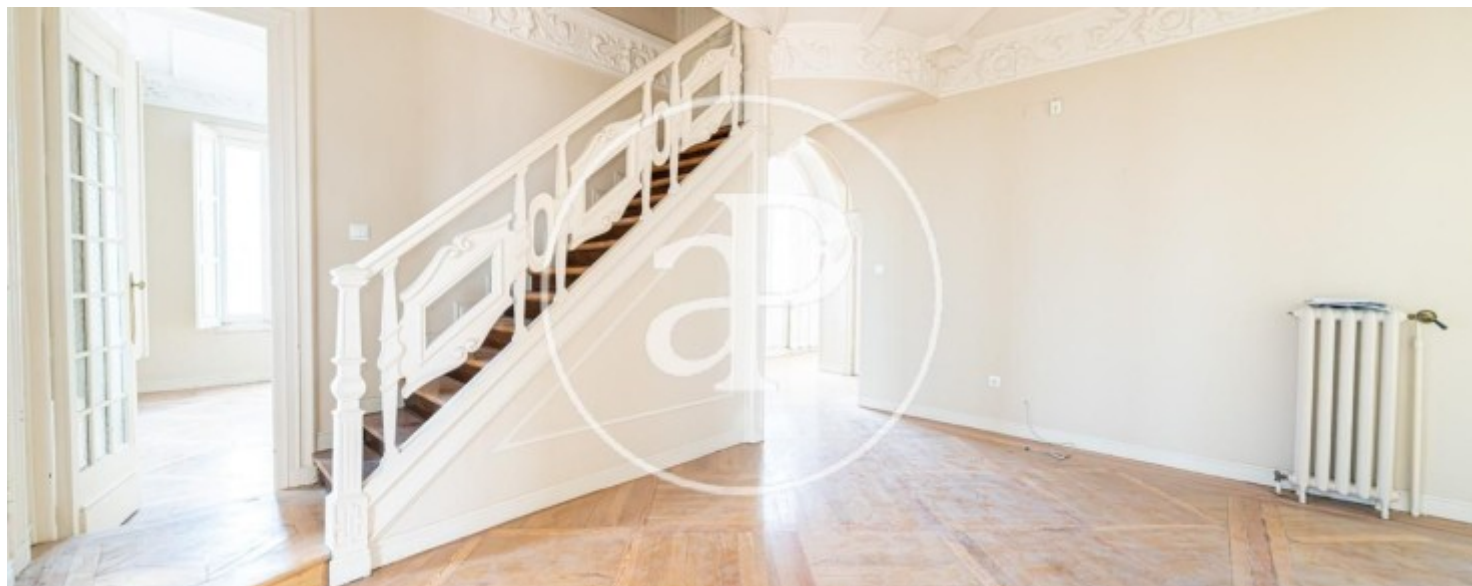
Recoletos, Madrid

REF. AM2110046



Recoletos, Madrid

REF. AM2110046



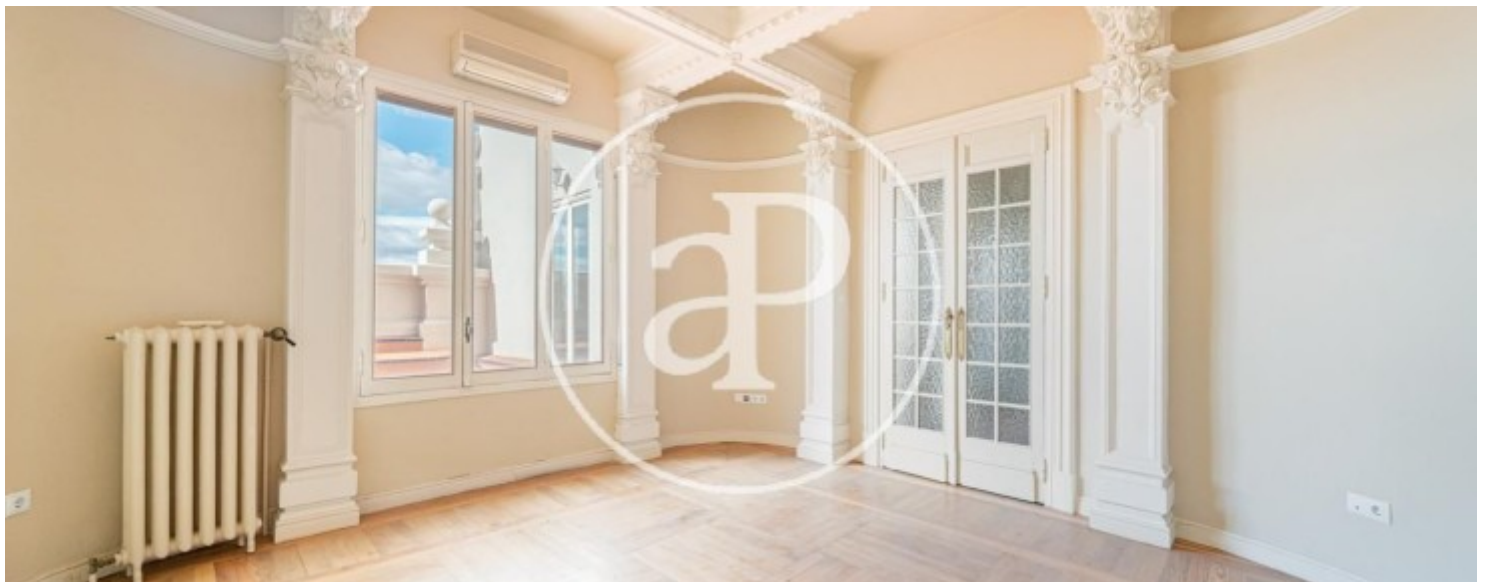


APROPERTIES  
REAL ESTATE

Calle Serrano 60  
28001 Madrid  
T. 91 800 54 65  
[www.aproperties.es](http://www.aproperties.es)

Recoletos, Madrid

REF. AM2110046





**APROPERTIES**  
REAL ESTATE

Calle Serrano 60  
28001 Madrid  
T. 91 800 54 65  
[www.aproperties.es](http://www.aproperties.es)

Recoletos, Madrid

REF. AM2110046



The information about any property is not binding to any offer or contract. Any verbal or written declaration made by aProperties with regards to the value or condition of the property should not be considered accurate or factual. The pictures make reference to some parts of the property at the times that they were taken. The areas, dimensions and distances that are given are approximate and should be checked by the client. The images are computer generated and are just an approximate indication of the real appearance of the property; these may change at any time. The information with regards to the property may also change at any time.



For **more information** or  
to make an appointment

[apropertiesmadrid@aproperties.es](mailto:apropertiesmadrid@aproperties.es)  
Tel: 91 800 54 65  
[www.aproperties.es](http://www.aproperties.es)