

Recoletos, Madrid

REF. VM2508020

Apartment for sale in Recoletos

Features

- ✓ Heating
- ✓ AACC
- ✓ Concierge
- ✓ Furnished
- ✓ Lift

Surface

132 m²

Bedrooms

2

Bathrooms

2



Price

1,859,000 €

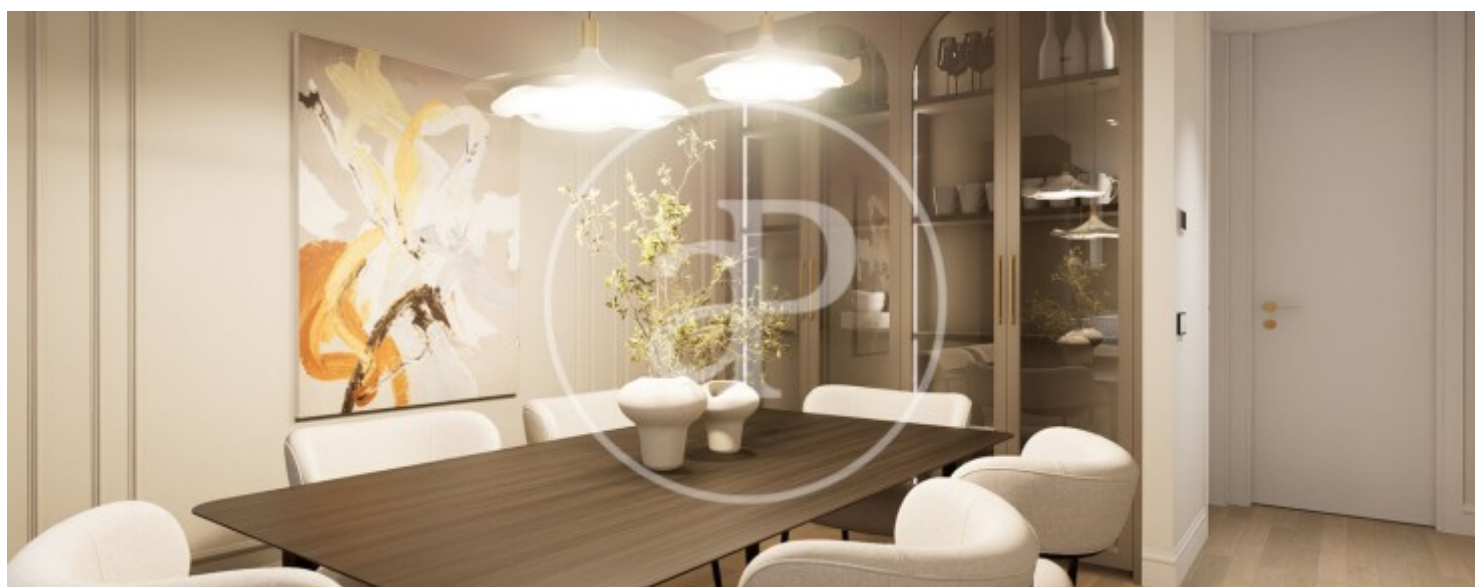
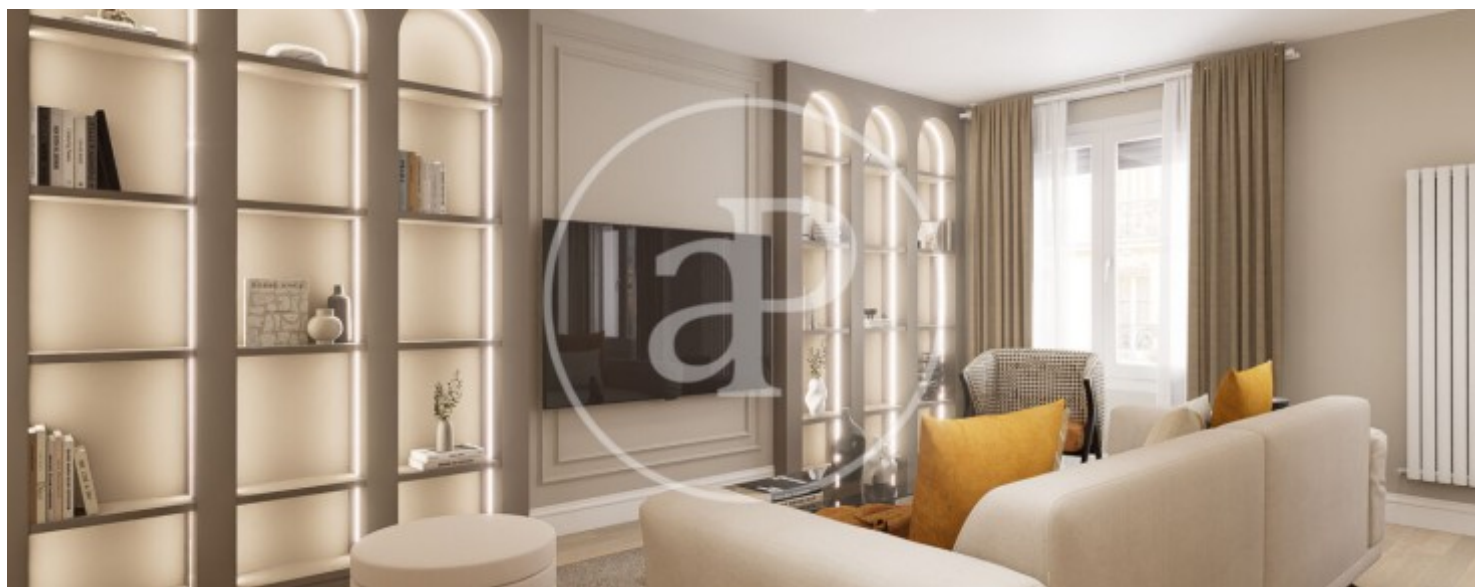
Enjoy a spacious, well-distributed exterior home with elegant finishes in Núñez de Balboa.

On par with Ayala, in a stately 1960s building, you can invest in a two-bedroom, two-bathroom property, one of which is en suite, with a separate laundry room and a social area consisting of an open-plan living room, kitchen, and dining room, which can easily be separated. The building has a doorman for added convenience, two elevators, a freight elevator, and endless shopping and leisure options, as well as being just a 10-minute walk from Buen Retiro Park. A safe bet in the Recoletos neighborhood, Salamanca district. Can you imagine living here?

Contact us,
we will be happy to assist you,
to offer you more details and information.

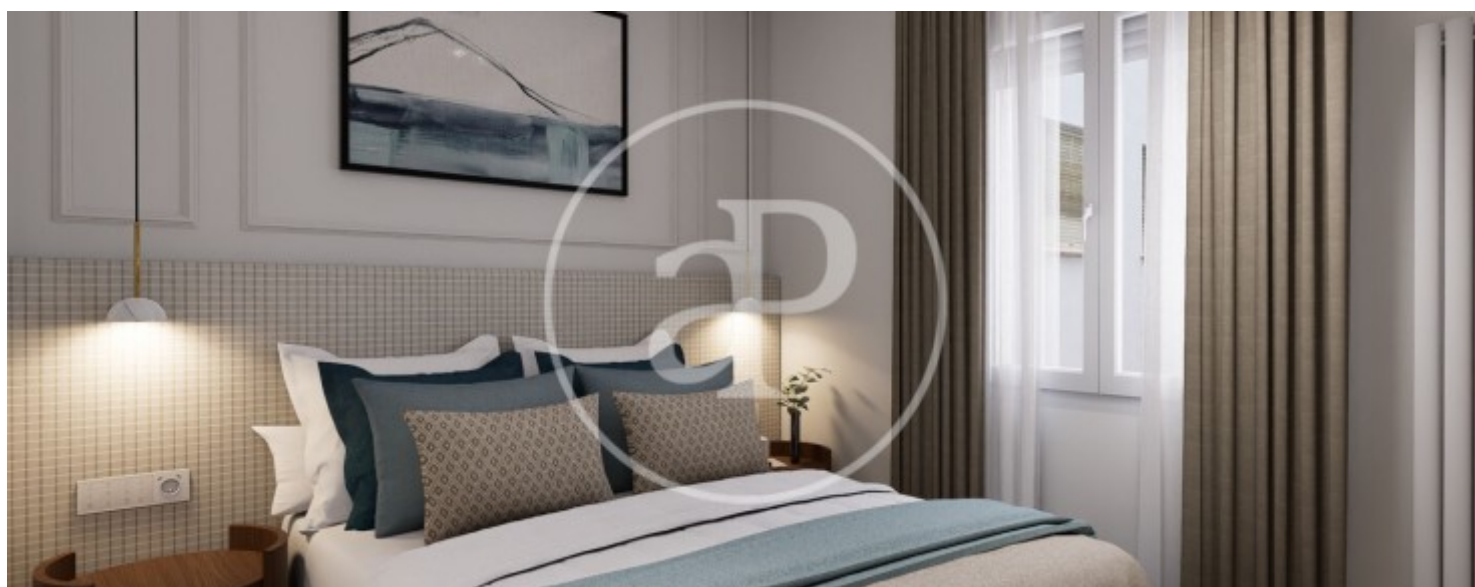
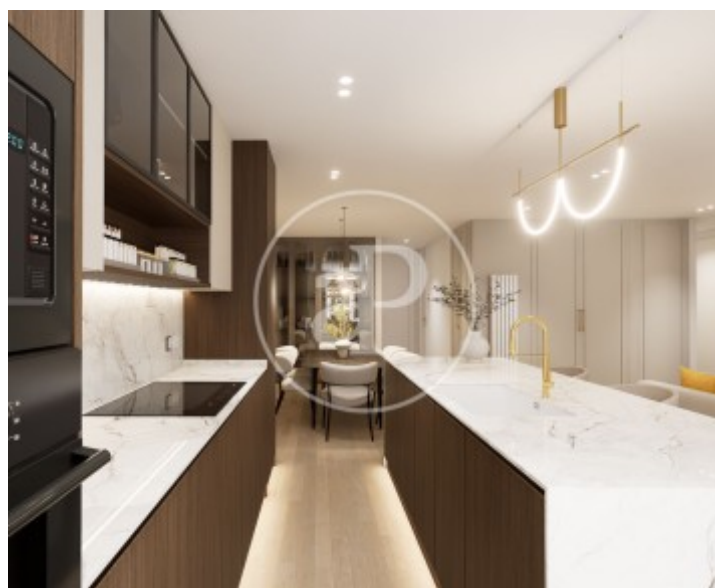
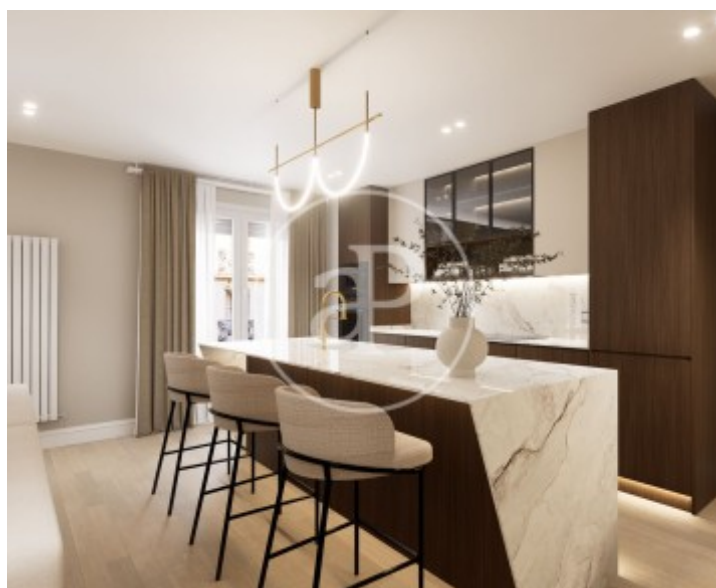
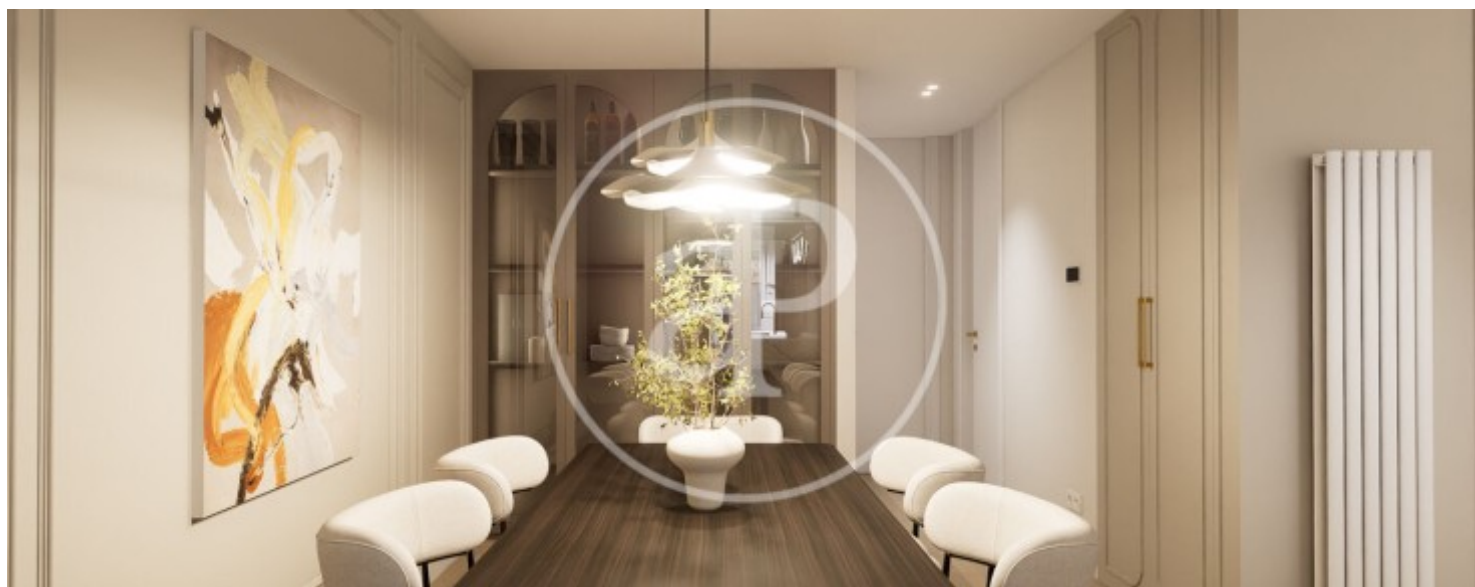
Recoletos, Madrid

REF. VM2508020



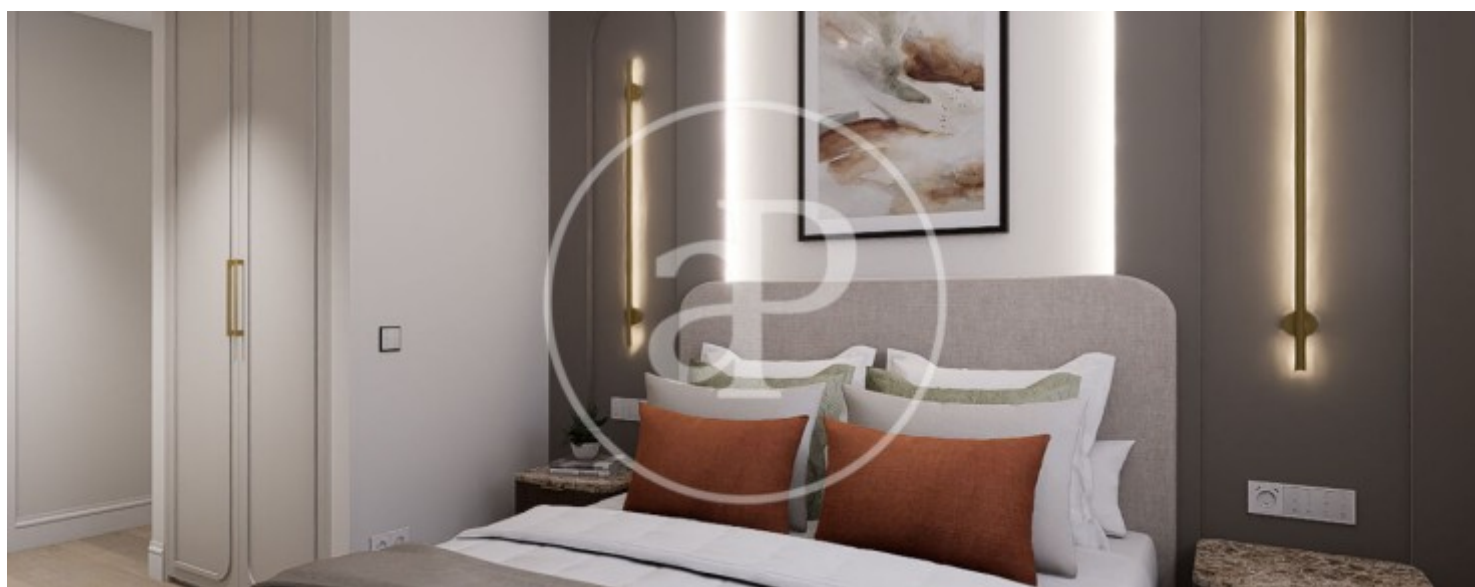
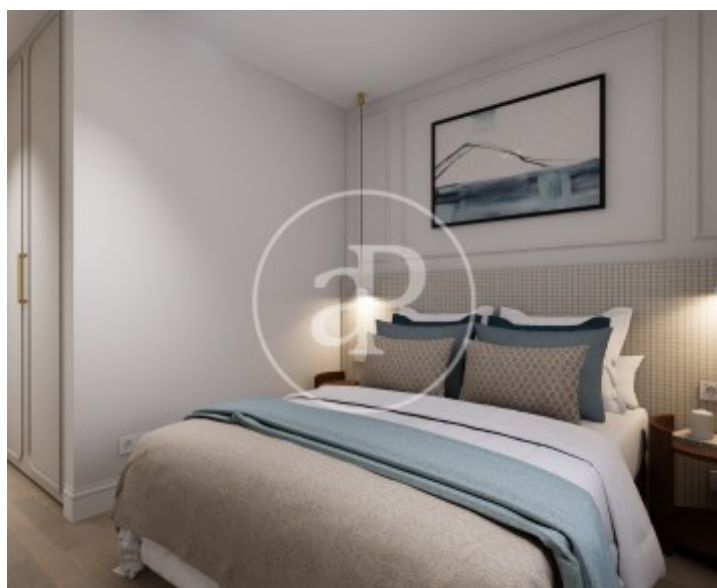
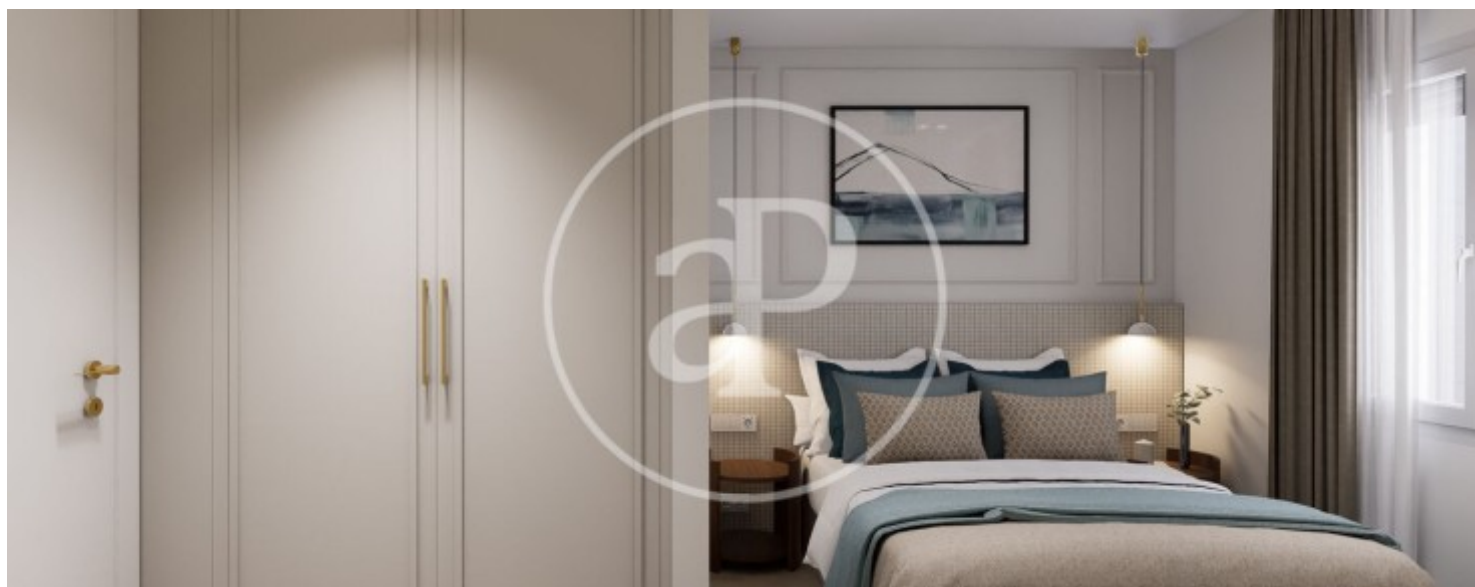
Recoletos, Madrid

REF. VM2508020



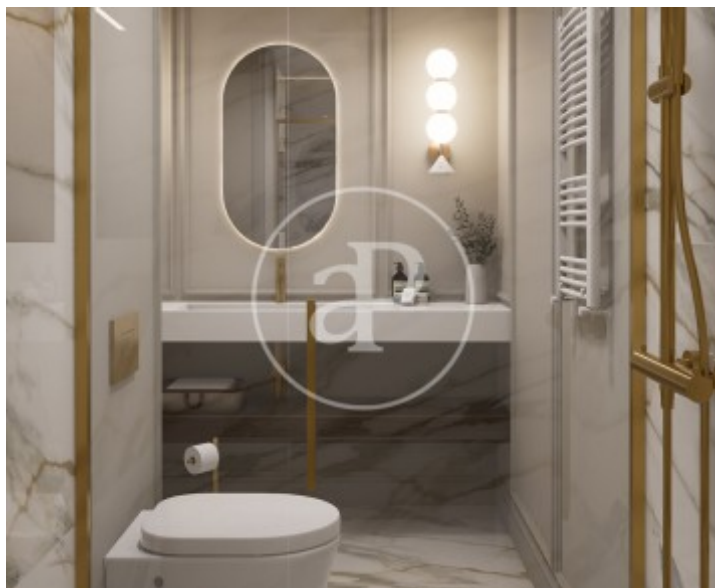
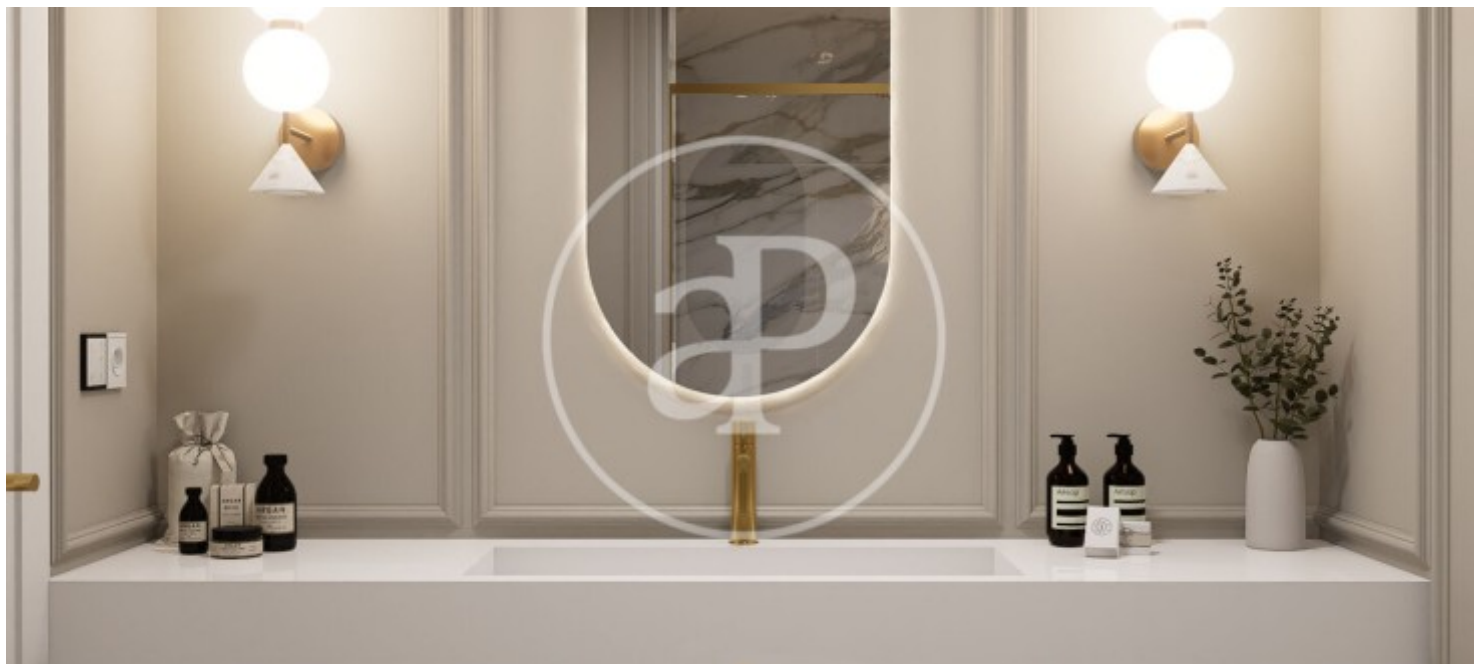
Recoletos, Madrid

REF. VM2508020



Recoletos, Madrid

REF. VM2508020



The information about any property is not binding to any offer or contract. Any verbal or written declaration made by aProperties with regards to the value or condition of the property should not be considered accurate or factual. The pictures make reference to some parts of the property at the times that they were taken. The areas, dimensions and distances that are given are approximate and should be checked by the client. The images are computer generated and are just an approximate indication of the real appearance of the property; these may change at any time. The information with regards to the property may also change at any time.

For **more information** or
to make an appointment

apropertiesmadrid@aproperties.es
Tel: 91 800 54 65
www.aproperties.es