

Puente de Vallecas, Madrid

REF. VM2602002

Flat for sale in Adelfas (Madrid)

Features

- ✓ Heating
- ✓ AACC
- ✓ Furnished
- ✓ Lift

Price

293,000 €

Surface

56 m²

Bedrooms

2

Bathroom

1



Brand new renovated apartment on Camino de Valderribas next to Cerro del Tío Pio Park This 56 m² apartment (according to the land registry) has been completely renovated and is brand new, featuring a modern and comfortable design. It is very bright, as all rooms are exterior-facing, and has a comfortable and functional layout. Located in the Nueva Numancia neighborhood, in a highly sought-after area. Currently, it has two exterior bedrooms, a full bathroom with a shower, and an open-plan kitchen/living room, fully equipped with integrated appliances and easily separable if desired. The layout allows for the possibility of creating a third bedroom. The property has individual air conditioning in each room and an electric water heater. It is located in a completely renovated building with an

elevator and SATE thermal insulation. Excellent transport links to the center of Madrid, just a few meters walk from the Nueva Numancia Metro station (Line 1) and with all amenities nearby, such as schools, health centers, restaurants, and parks. Ideal for both living and investment, given its high profitability and strong demand in the area. Can you imagine living here?

Contact us,
we will be happy to assist you,
to offer you more details and information.

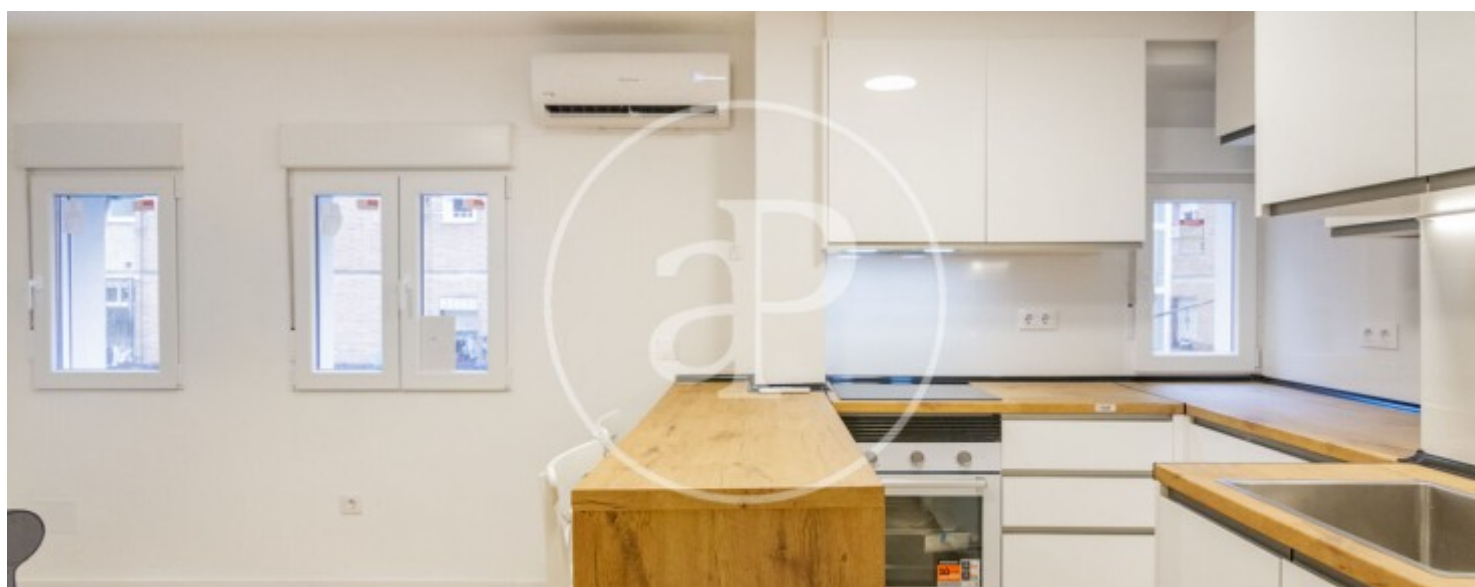
Puente de Vallecas, Madrid

REF. VM2602002



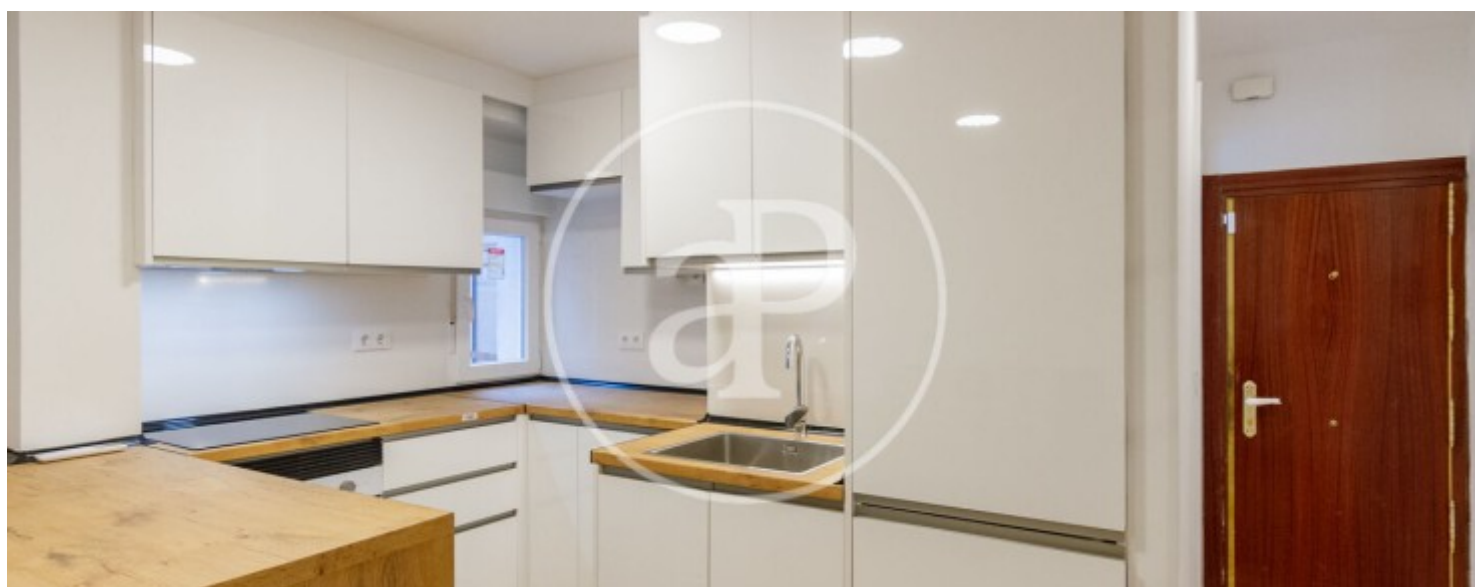
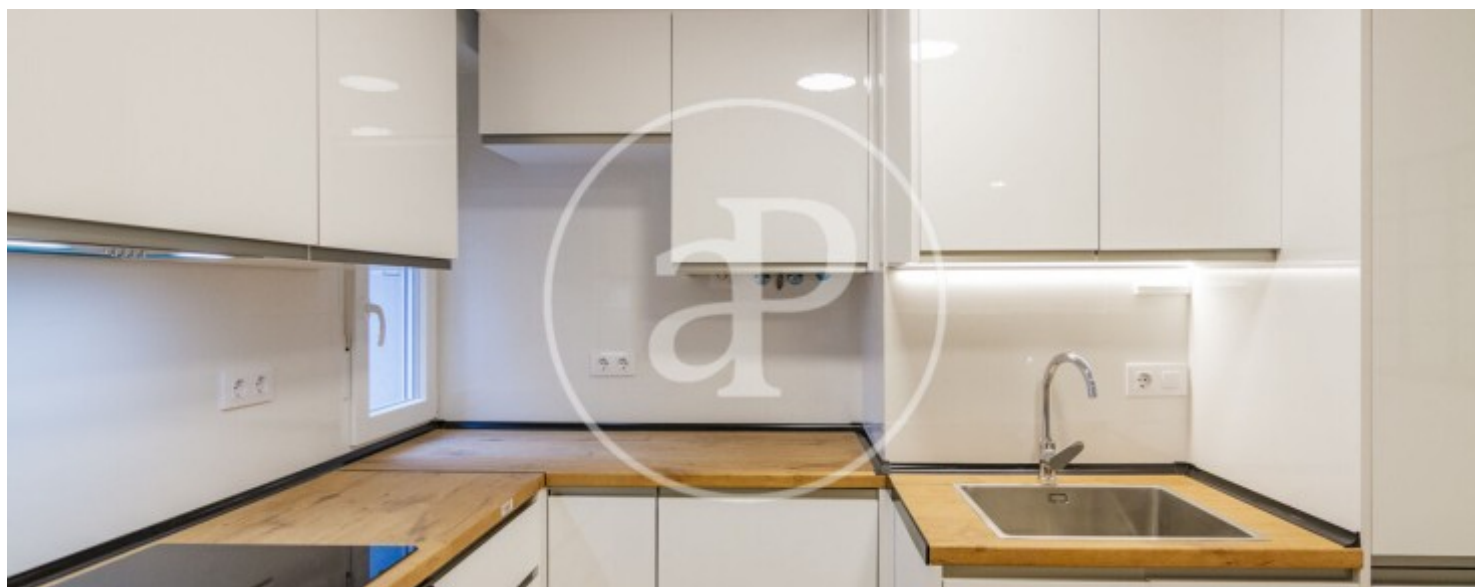
Puente de Vallecas, Madrid

REF. VM2602002



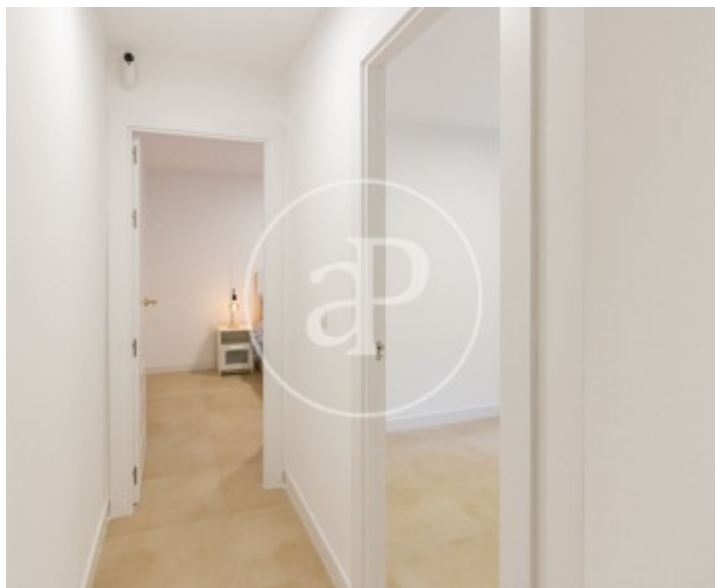
Puente de Vallecas, Madrid

REF. VM2602002



Puente de Vallecas, Madrid

REF. VM2602002



The information about any property is not binding to any offer or contract. Any verbal or written declaration made by aProperties with regards to the value or condition of the property should not be considered accurate or factual. The pictures make reference to some parts of the property at the times that they were taken. The areas, dimensions and distances that are given are approximate and should be checked by the client. The images are computer generated and are just an approximate indication of the real appearance of the property; these may change at any time. The information with regards to the property may also change at any time.

For **more information** or
to make an appointment

apropertiesmadrid@aproperties.es
Tel: 91 800 54 65
www.aproperties.es