

Palacio, Madrid

REF. VM2111018



## Exterior flat for sale in Gran Vía

### Features

- ✓ Views
- ✓ Heating
- ✓ Furnished
- ✓ AACC
- ✓ Lift
- ✓ Concierge

Price

**1,175,000 €**

Surface

**101 m<sup>2</sup>**

Bedrooms

**2**

Bathrooms

**2**



### Aproperties is selling this luxury flat in the heart of Gran Vía.

The property not only stands out for its impressive views of the mythical Gran Vía, but also for its carefully finished finishes, offering a unique setting for people who wish to live in a high standing space within a very cosmopolitan environment. The flat is completely exterior and all its windows, with thermal and acoustic insulation, overlook the Gran Vía. From the entrance there is a hallway with a complete bathroom, which leads to the living room and kitchen, equipped with all the high-end appliances. The space stands out for its great luminosity and a round ceiling coving

with RGB LED lighting that offers indirect lighting to the environment. On the other hand, two large sliding doors conceal the access to the two bedrooms. The master bedroom has a walk-in wardrobe to the ceiling and an attractive en-suite bathroom. The second bedroom also has a large wardrobe with the same finishes and is ideal as a guest room or even an office. Finally, the property has a lift and concierge service and the flat has home automation, air conditioning and individual heating.

**Contact us,**  
we will be happy to assist you,  
to offer you more details and information.

Palacio, Madrid

REF. VM2111018



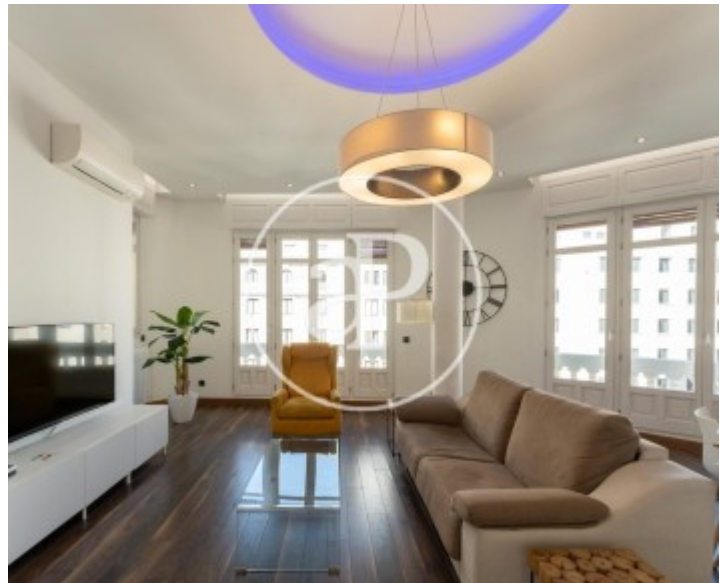


APROPERTIES  
REAL ESTATE

Calle Serrano 60  
28001 Madrid  
T. 91 800 54 65  
[www.aproperties.es](http://www.aproperties.es)

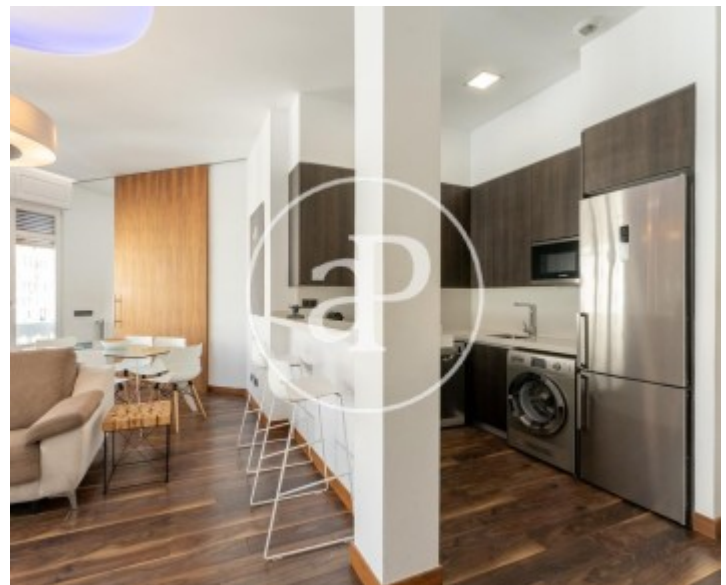
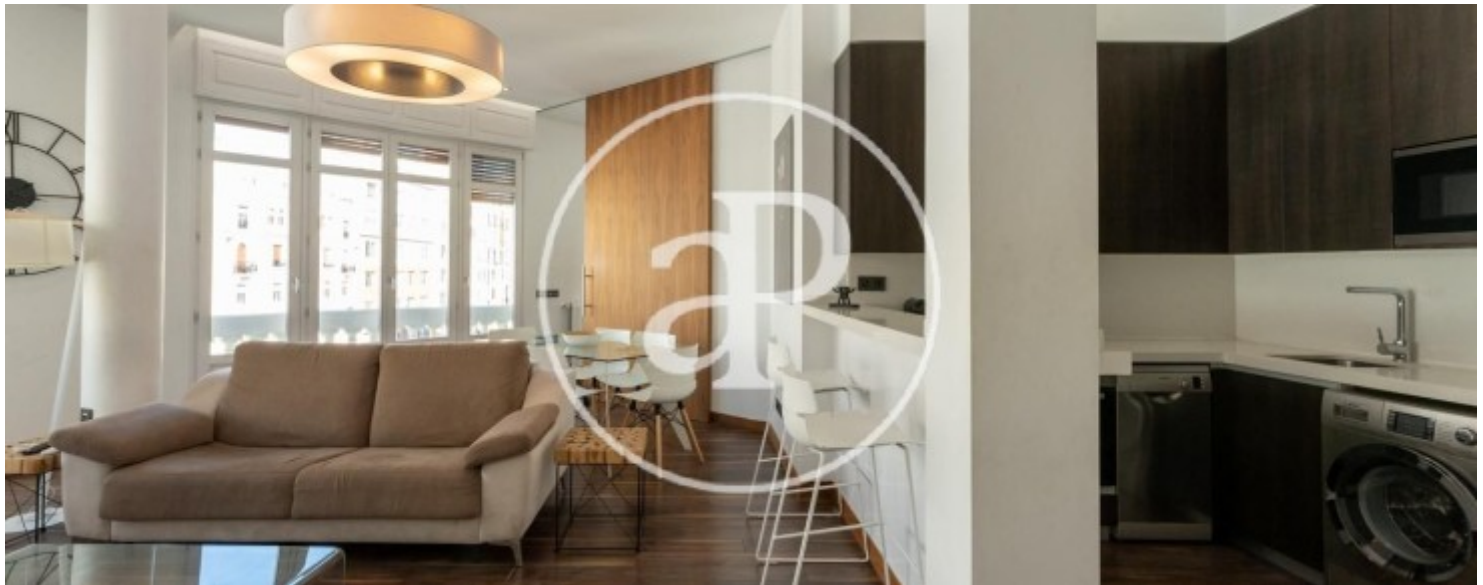
Palacio, Madrid

REF. VM2111018



Palacio, Madrid

REF. VM2111018





**APROPERTIES**  
REAL ESTATE

Calle Serrano 60  
28001 Madrid  
T. 91 800 54 65  
[www.aproperties.es](http://www.aproperties.es)

Palacio, Madrid

REF. VM2111018



The information about any property is not binding to any offer or contract. Any verbal or written declaration made by aProperties with regards to the value or condition of the property should not be considered accurate or factual. The pictures make reference to some parts of the property at the times that they were taken. The areas, dimensions and distances that are given are approximate and should be checked by the client. The images are computer generated and are just an approximate indication of the real appearance of the property; these may change at any time. The information with regards to the property may also change at any time.



For **more information** or  
to make an appointment

[apropertiesmadrid@aproperties.es](mailto:apropertiesmadrid@aproperties.es)  
Tel: 91 800 54 65  
[www.aproperties.es](http://www.aproperties.es)