

Palacio, Madrid

REF. AM2110107



## Flat for rent in Palacio

### Features

- ✓ Heating
- ✓ AACC
- ✓ Lift
- ✓ Furnished
- ✓ Backyard
- ✓ Has parking

Price

**1,600 €**

Surface

**95 m<sup>2</sup>**

Bedroom

**1**

Bathrooms

**2**



### Great flat in the heart of Madrid.

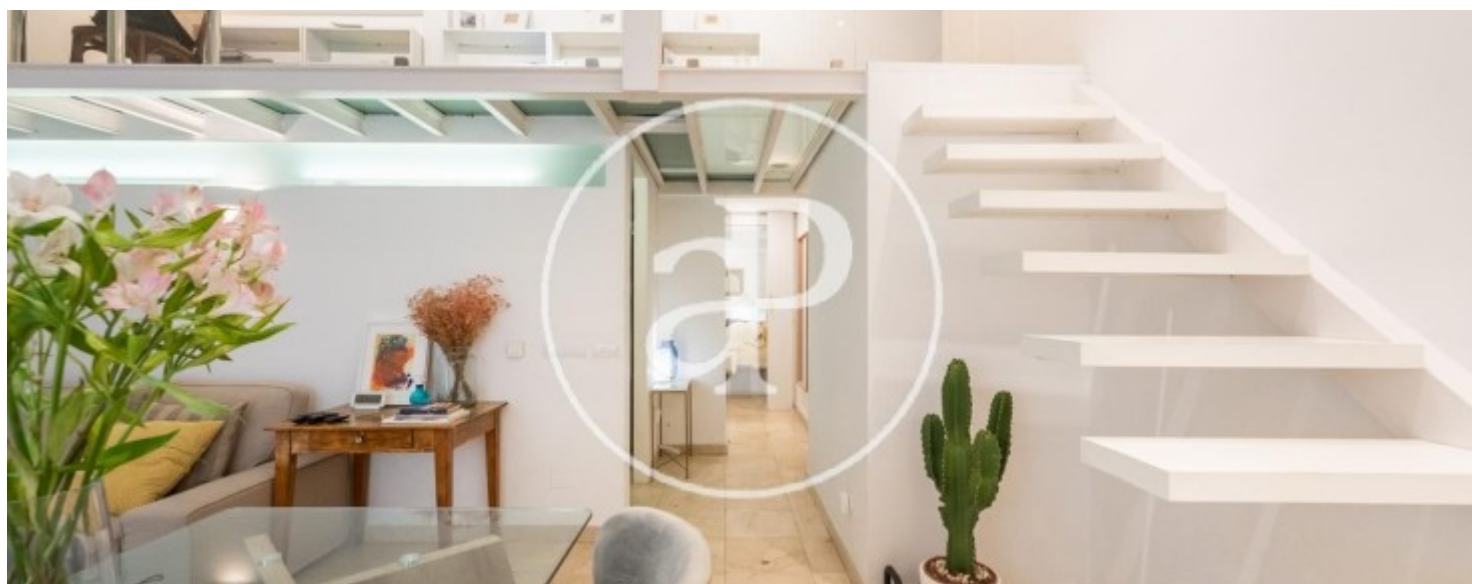
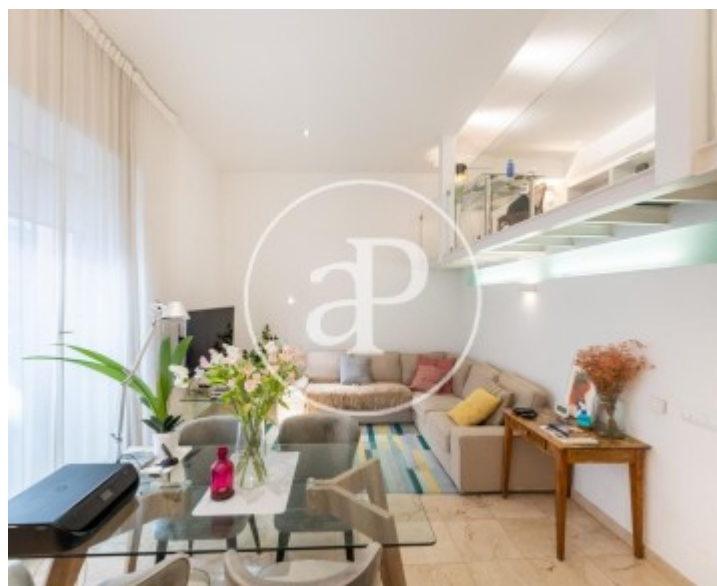
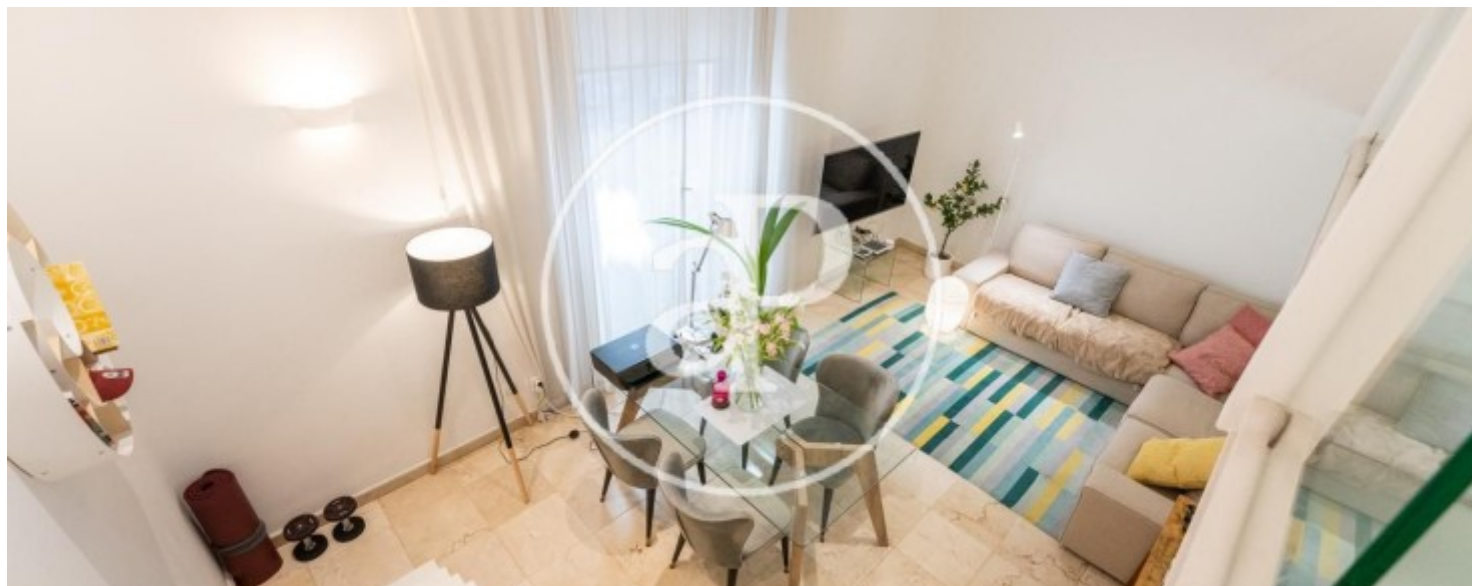
Located in one of the most emblematic neighbourhoods, Palacio. The building has a height of 4 floors, divided into two wings, was fully restored and kept only the protected elements of it, has a private garden which received an award by the Community of Madrid for its design in the rehabilitation of a historic building. The flat has premium qualities. Individual kitchen furnished and equipped with high-end appliances, very spacious independent living room, a bedroom, a bathroom, a toilet, plus a garage space in the property. The main bedroom is en suite with large built-in wardrobes. It has soundproof windows, being exempt of

exterior noises with the views to the garden. It comes fully furnished and ready to move into. It has 69 m<sup>2</sup> according to the land registry. An extremely pleasant area to live in, especially because of its great offer of typical bars, taverns, great restaurants or gastronomic spaces such as the Mercado de San Miguel, typical shops from the end of the last century. This area, which is practically a palace, has something very special and it is the perfect balance between a quiet life, the cultural and economic quality of its neighbours and the magnificent dynamism of being a great European...

**Contact us,**  
we will be happy to assist you,  
to offer you more details and information.

Palacio, Madrid

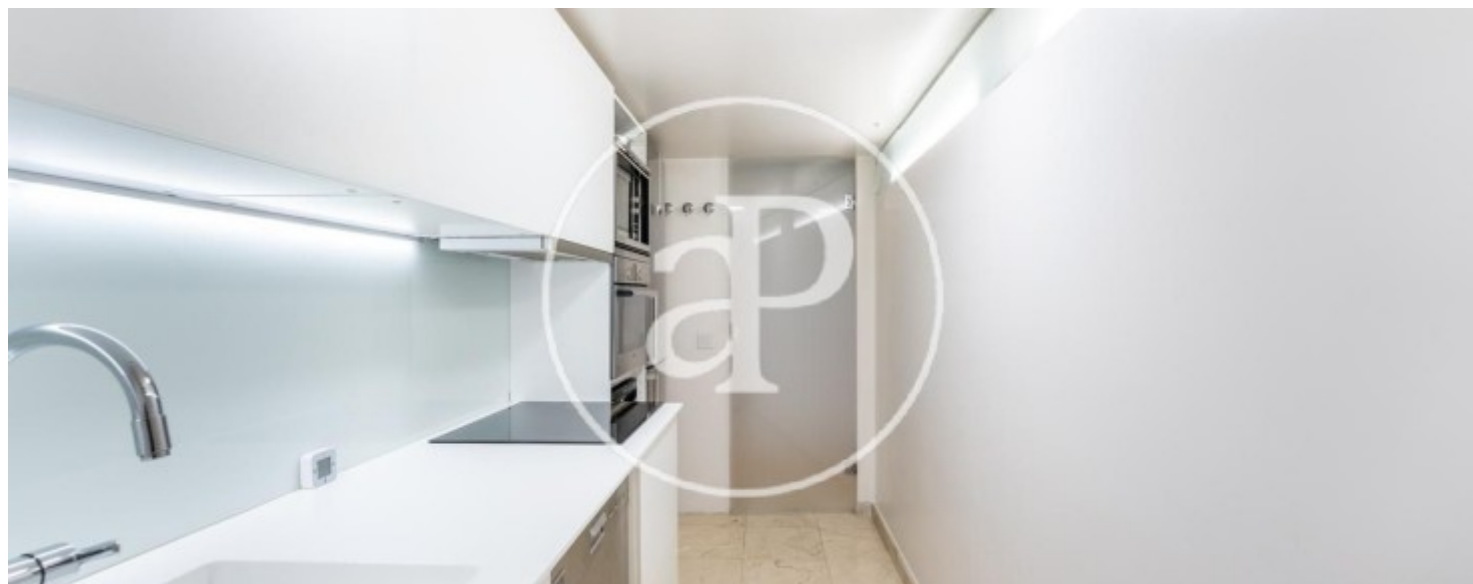
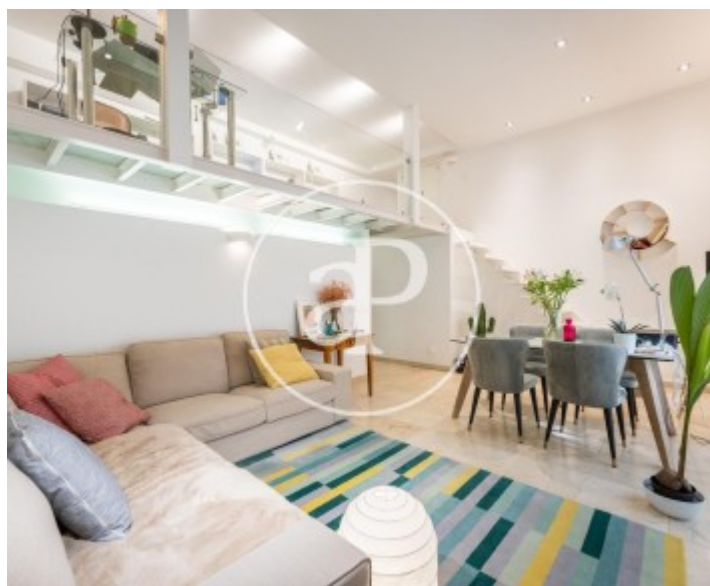
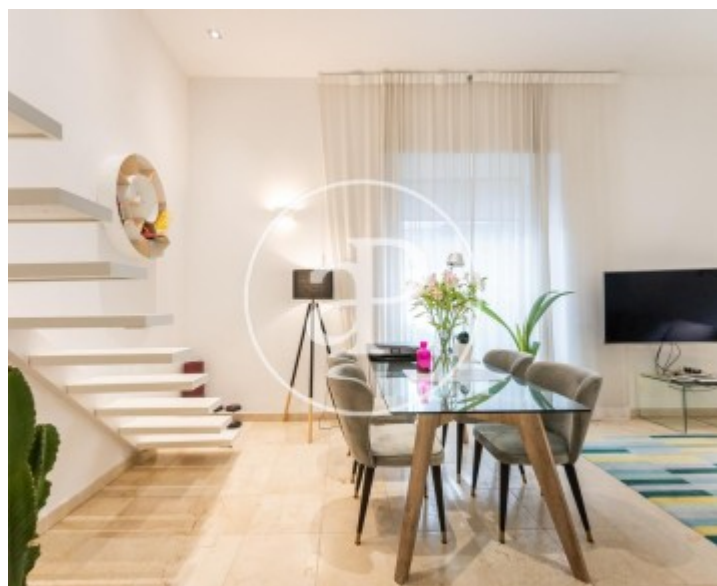
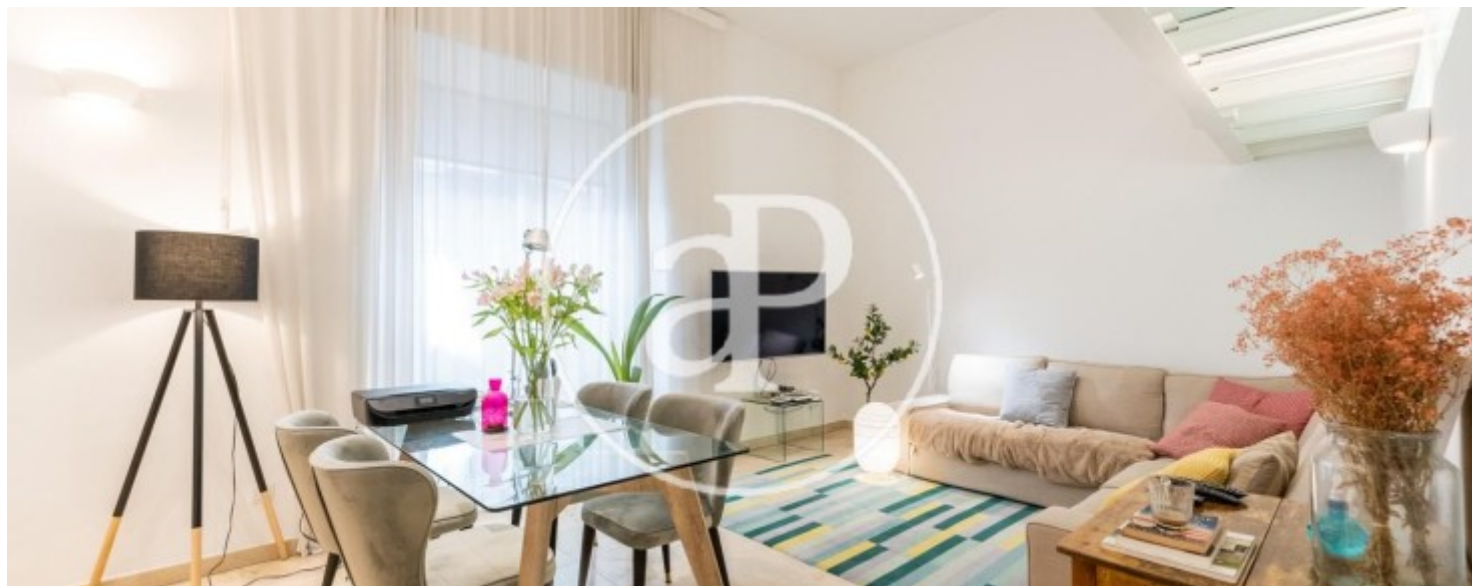
REF. AM2110107





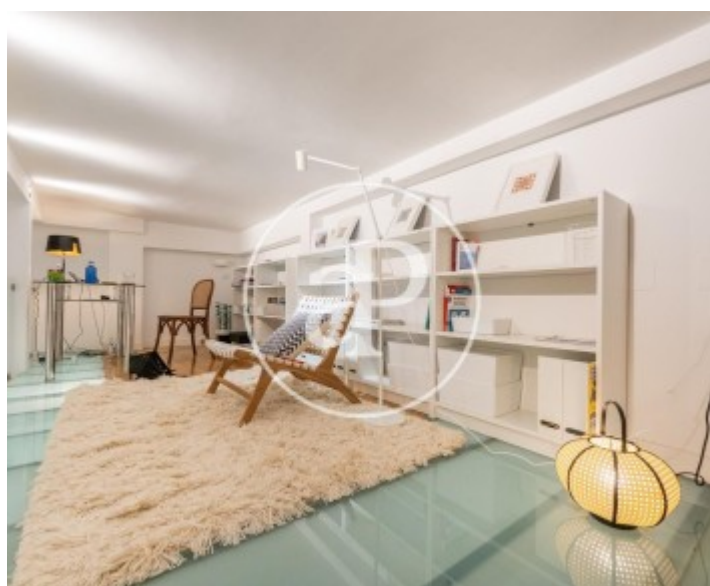
Palacio, Madrid

REF. AM2110107



Palacio, Madrid

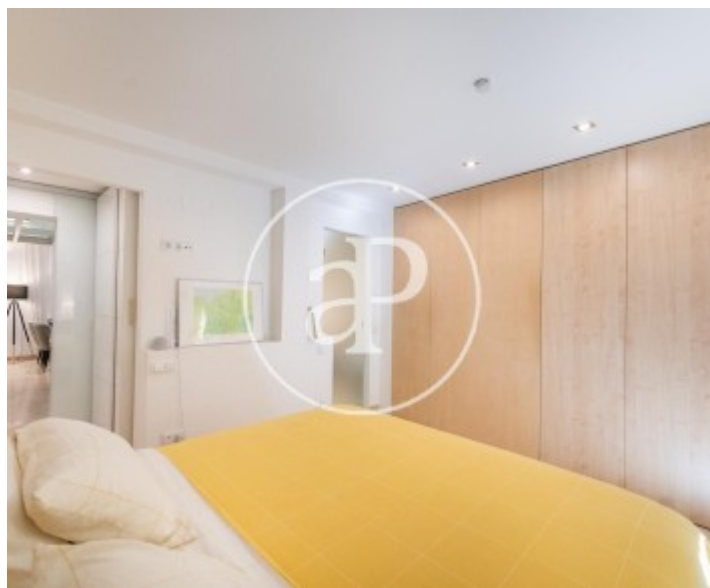
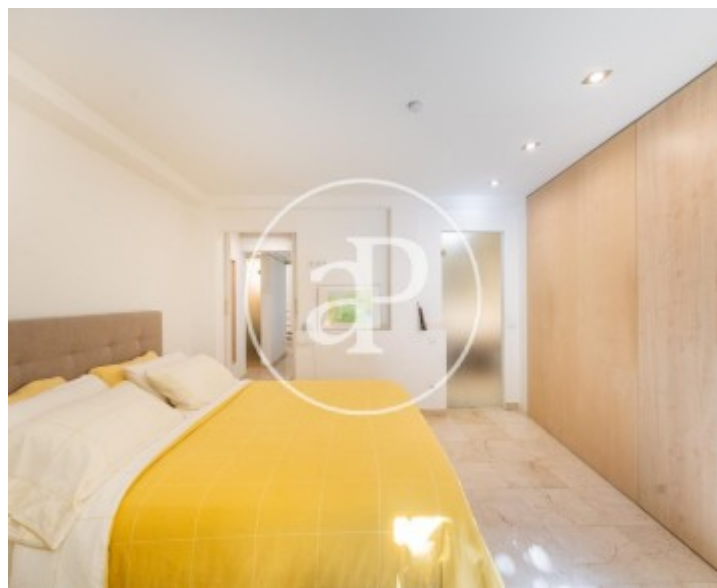
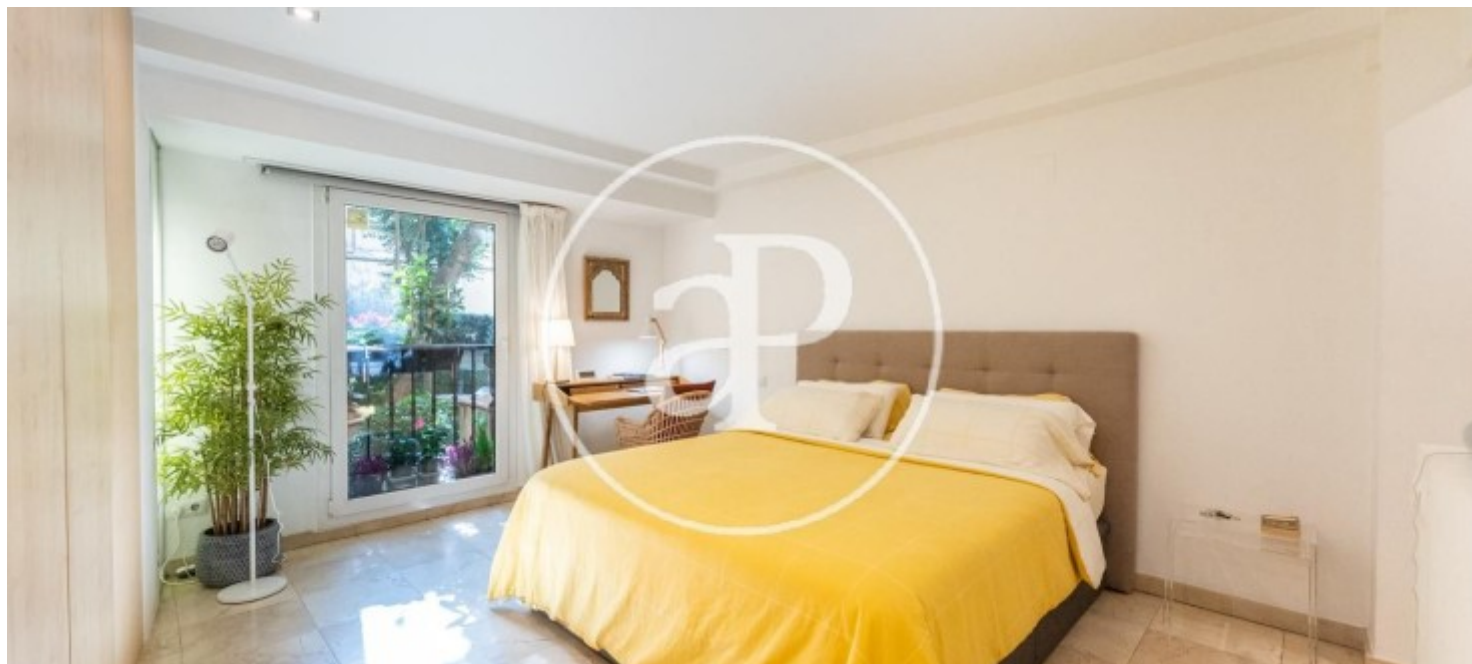
REF. AM2110107





Palacio, Madrid

REF. AM2110107



The information about any property is not binding to any offer or contract. Any verbal or written declaration made by aProperties with regards to the value or condition of the property should not be considered accurate or factual. The pictures make reference to some parts of the property at the times that they were taken. The areas, dimensions and distances that are given are approximate and should be checked by the client. The images are computer generated and are just an approximate indication of the real appearance of the property; these may change at any time. The information with regards to the property may also change at any time.



For **more information** or  
to make an appointment

[apropertiesmadrid@aproperties.es](mailto:apropertiesmadrid@aproperties.es)  
Tel: 91 800 54 65  
[www.aproperties.es](http://www.aproperties.es)