



Palacio, Madrid

REF. AM2511027

# Flat for rent in Palacio (Madrid)

## Features

- ✓ Views
- ✓ AACC
- ✓ Concierge
- ✓ Heating
- ✓ Lift
- ✓ Has parking

Price  
**2,100 €**

Surface  
**80 m<sup>2</sup>**

Bedroom  
**1**

Bathroom  
**1**



## IMMEDIATE OCCUPANCY Bright and elegant apartment with views of Las Vistillas and the Almudena Cathedral.

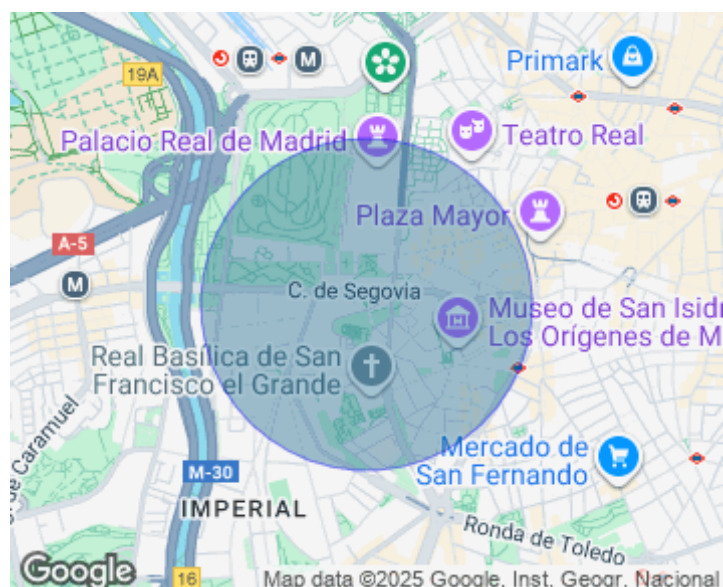
Located in the heart of Madrid, this welcoming and modern apartment is filled with light and offers a serene atmosphere. The apartment features a spacious living-dining room with two balconies, providing pleasant views of the green areas surrounding the building. The open-plan kitchen, integrated into the main living space, is equipped with high-end Bosch appliances. The bright master bedroom includes a dressing area and an elegant en-suite bathroom, which also features a convenient paneled space for a washer and dryer. Air conditioning and heating are

installed throughout, and a parking space is available in the same building. The building has an elevator, a concierge, a ramp for wheelchair access, and bicycle parking. Located in one of the city's most historic and charming areas, just steps from the Vistillas Gardens and the Almudena Cathedral, this home combines the tranquility of its gardens and viewpoints with the convenience of living close to everything, thanks to excellent transport links. It's ideal for those seeking to experience the most authentic Madrid: strolling through its historic streets, enjoying a coffee on its terraces,...

**Contact us,**  
we will be happy to assist you,  
to offer you more details and information.

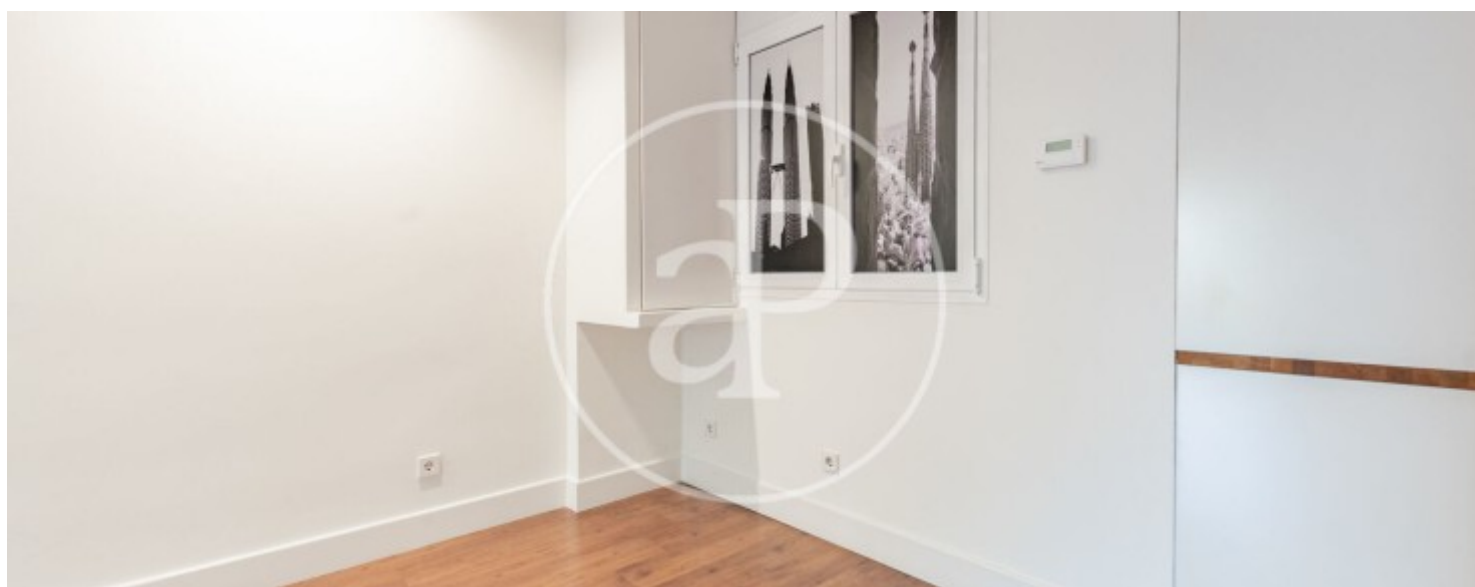
Palacio, Madrid

REF. AM2511027



Palacio, Madrid

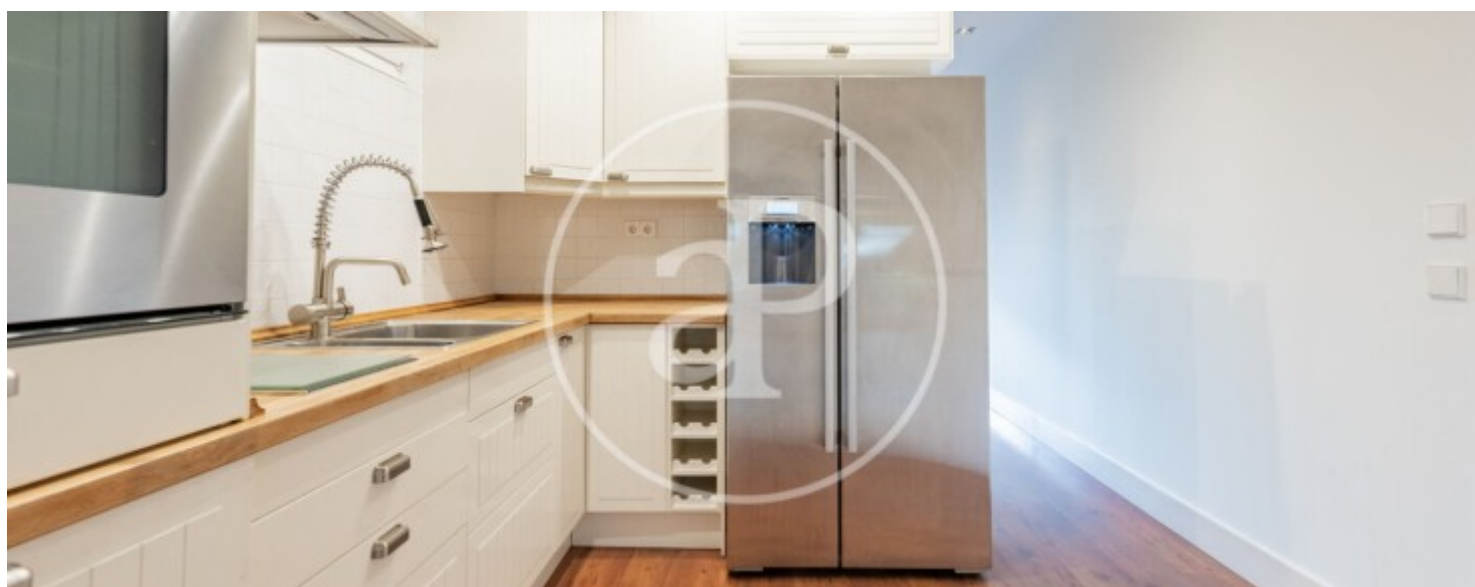
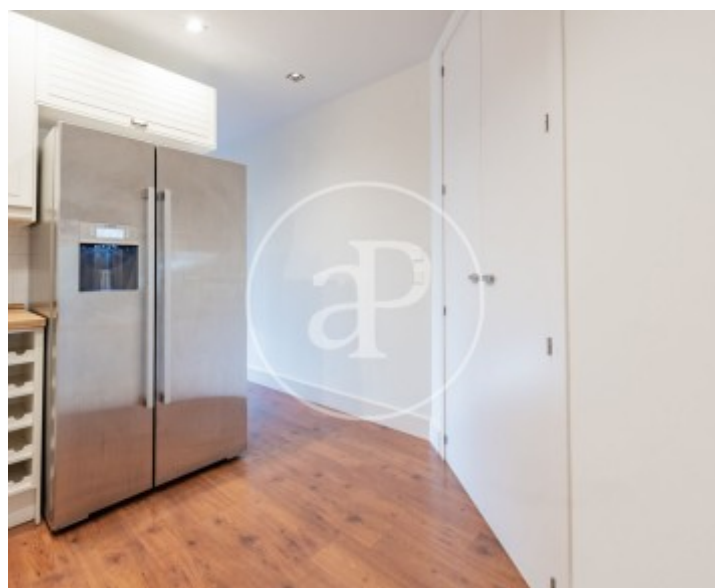
REF. AM2511027





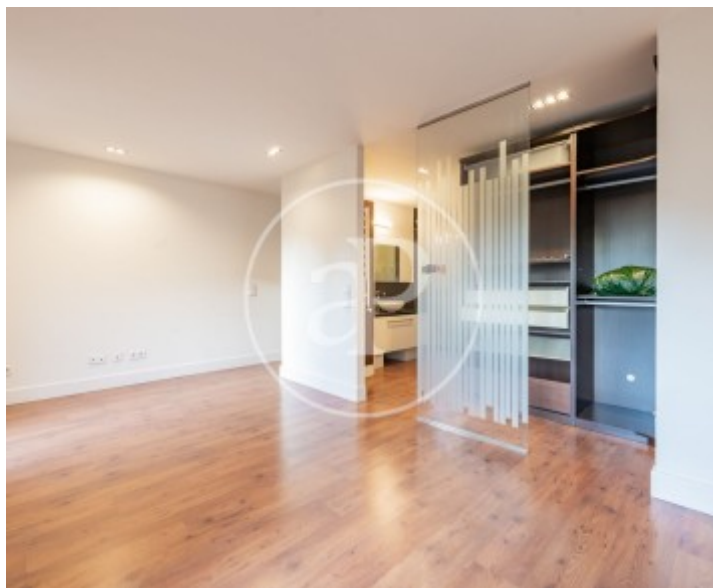
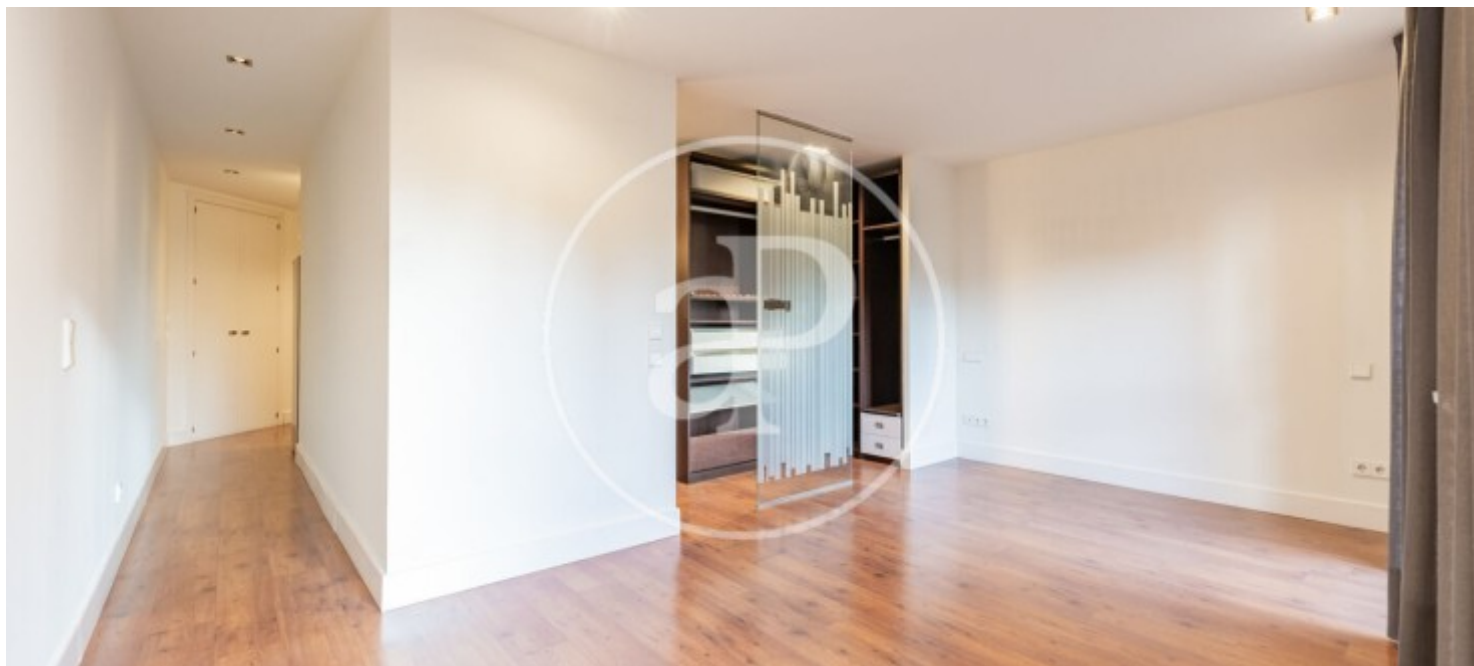
Palacio, Madrid

REF. AM2511027



Palacio, Madrid

REF. AM2511027



The information about any property is not binding to any offer or contract. Any verbal or written declaration made by aProperties with regards to the value or condition of the property should not be considered accurate or factual. The pictures make reference to some parts of the property at the times that they were taken. The areas, dimensions and distances that are given are approximate and should be checked by the client. The images are computer generated and are just an approximate indication of the real appearance of the property; these may change at any time. The information with regards to the property may also change at any time.

For **more information** or  
to make an appointment

[apropertiesmadrid@aproperties.es](mailto:apropertiesmadrid@aproperties.es)  
Tel: 91 800 54 65  
[www.aproperties.es](http://www.aproperties.es)