

Palacio, Madrid

REF. VM2606084

Flat for sale in La Latina

Features

Surface

66 m²

Bedroom

1

Bathroom

1

Price

430,000 €



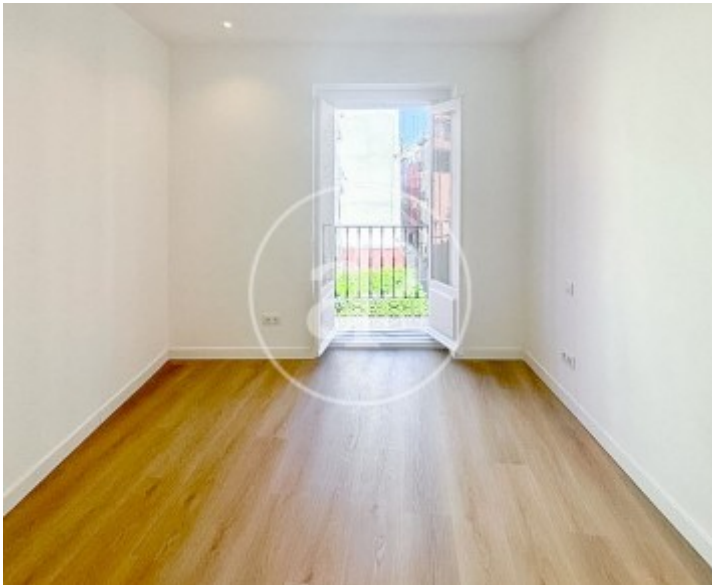
In the heart of La Latina, one of Madrid's most iconic and characterful neighbourhoods, lies this beautifully refurbished 66 m² apartment (according to the Land Registry), presented in impeccable, move-in-ready condition. Located in the historic Palacio district, it combines the charm of traditional Madrid architecture with the comfort and convenience of modern living. Its street-facing balcony fills the home with natural light and offers a connection to the vibrant atmosphere of one of the capital's most authentic and sought-after areas. The property features a bright living room with direct access to the balcony, alongside a semi-open kitchen that integrates seamlessly into the living space. The bedroom overlooks a peaceful inner courtyard in the traditional corrala style, providing

privacy and tranquillity away from the bustle of the city while still enjoying a prime central location. The recent refurbishment has created functional, welcoming and thoughtfully designed spaces, ideal for making the most of life in the heart of Madrid. Living in Palacio and La Latina means having some of Madrid's most celebrated landmarks just a few steps away, including the Royal Palace, Plaza de Oriente, Plaza Mayor and Mercado de la Cebada. Its historic streets, diverse gastronomic scene, local shops and rich cultural life make this one of the city's most desirable...

Contact us,
we will be happy to assist you,
to offer you more details and information.

Palacio, Madrid

REF. VM2606084



Palacio, Madrid

REF. VM2606084



The information about any property is not binding to any offer or contract. Any verbal or written declaration made by aProperties with regards to the value or condition of the property should not be considered accurate or factual. The pictures make reference to some parts of the property at the times that they were taken. The areas, dimensions and distances that are given are approximate and should be checked by the client. The images are computer generated and are just an approximate indication of the real appearance of the property; these may change at any time. The information with regards to the property may also change at any time.

For **more information** or
to make an appointment

apropertiesmadrid@aproperties.es
Tel: 91 800 54 65
www.aproperties.es

Palacio, Madrid

REF. VM2606084



The information about any property is not binding to any offer or contract. Any verbal or written declaration made by aProperties with regards to the value or condition of the property should not be considered accurate or factual. The pictures make reference to some parts of the property at the times that they were taken. The areas, dimensions and distances that are given are approximate and should be checked by the client. The images are computer generated and are just an approximate indication of the real appearance of the property; these may change at any time. The information with regards to the property may also change at any time.

For **more information** or
to make an appointment

apropertiesmadrid@aproperties.es
Tel: 91 800 54 65
www.aproperties.es