

Palacio, Madrid

REF. AM2601068

# Penthouse for rent in Palacio (Madrid)

## Features

- ✓ Heating
- ✓ AACC
- ✓ Lift
- ✓ Furnished
- ✓ Terrace
- ✓ Concierge

Price  
**4,300 €**

Surface  
**250 m<sup>2</sup>**

Bedrooms  
**4**

Bathrooms  
**3**



## SEASONAL CONTRACT.

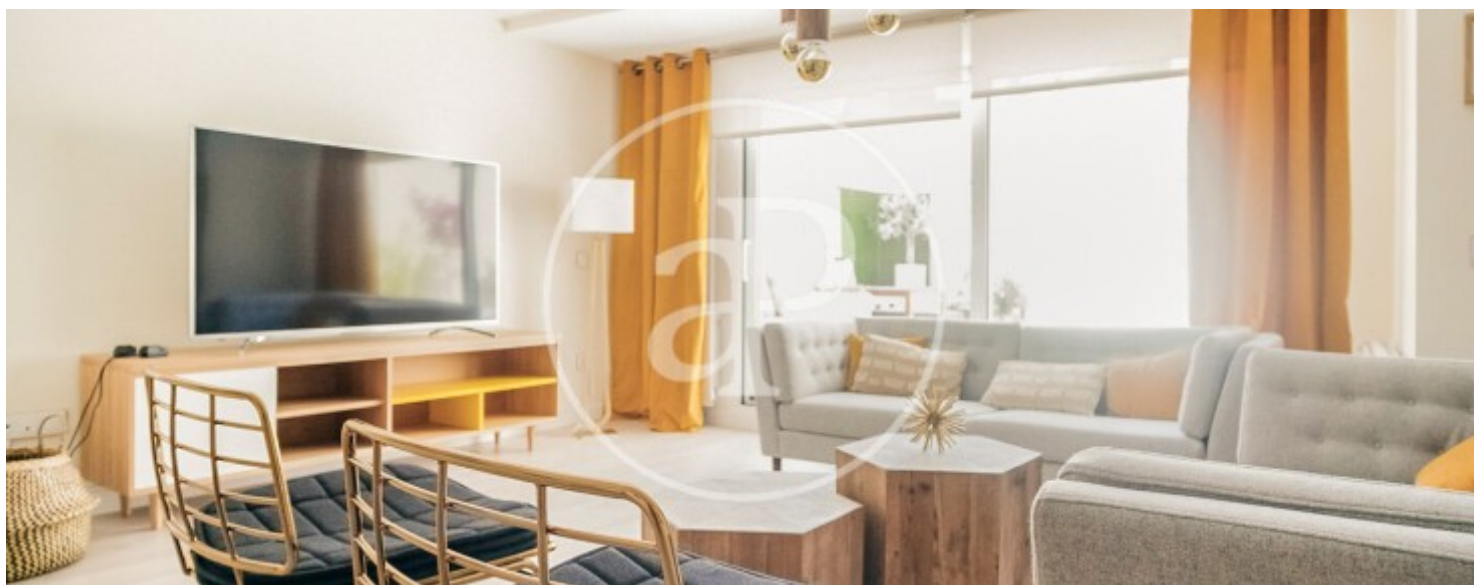
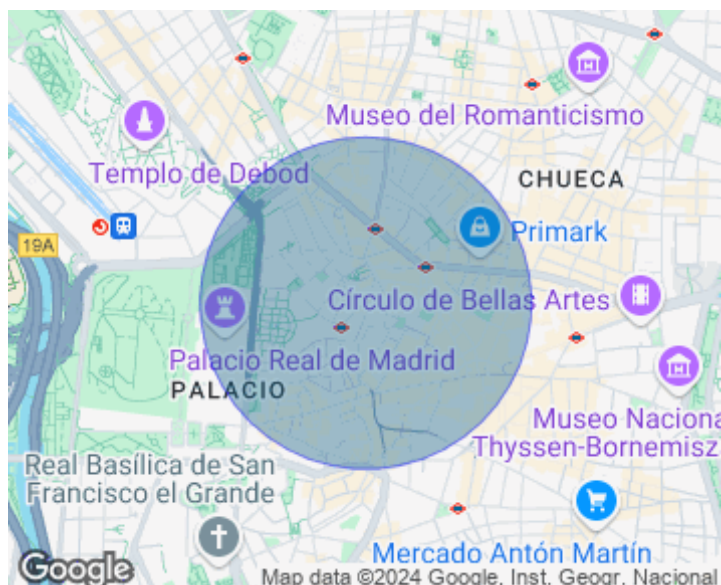
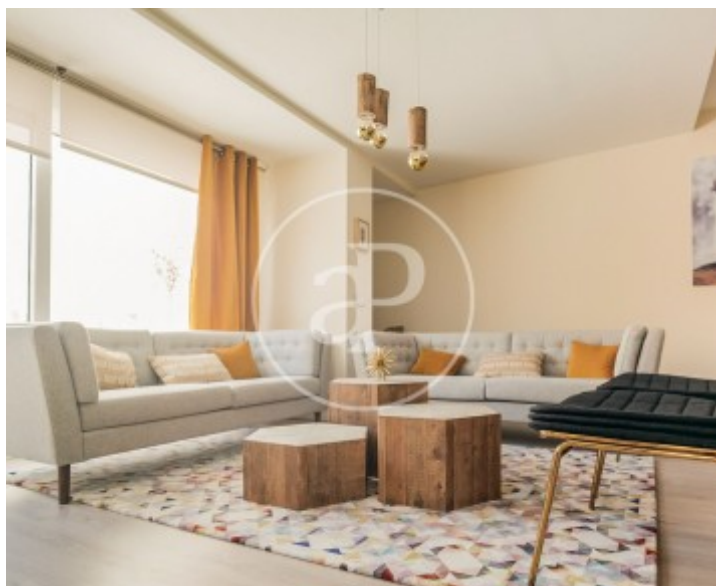
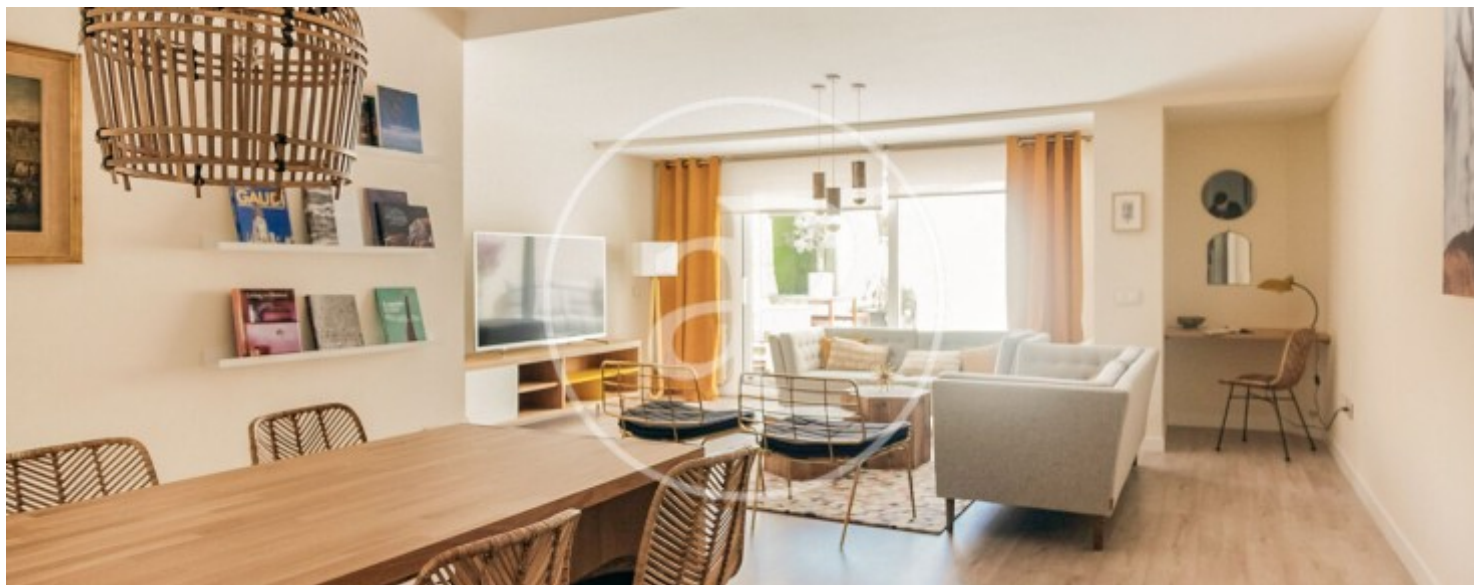
AVAILABLE FROM 04 JUNE 2026. This exclusive 250 m2 penthouse with 4 bedrooms, 3 bathrooms and 2 terraces offers a luxurious and comfortable space to call home in the Opera area. Two bathrooms are en suite, while the third is located in the hallway. All bedrooms have built-in closets. The kitchen is fully equipped with all the necessary appliances, including kitchenware to make you feel at home from the first moment. To ensure your comfort at any time of the year, the house has air conditioning and heating. And to keep you connected to the world, wifi service is included in the rent. The common areas are a real gem. The spacious living room is

perfect for meetings and relaxing moments, while the two terraces with plant garden are ideal to enjoy and have meals outdoors. An urban oasis for unforgettable experiences in the city. The noise-free building, with elevator and concierge adds a plus of comfort. Strategically located in the prestigious neighborhood of Palacio, the property enjoys excellent connectivity and access to an extensive transport network throughout the city. The nearby Ópera metro station, just a 1-minute walk away, guarantees fast and efficient mobility to explore Madrid in its entirety. You will...

**Contact us,**  
we will be happy to assist you,  
to offer you more details and information.

Palacio, Madrid

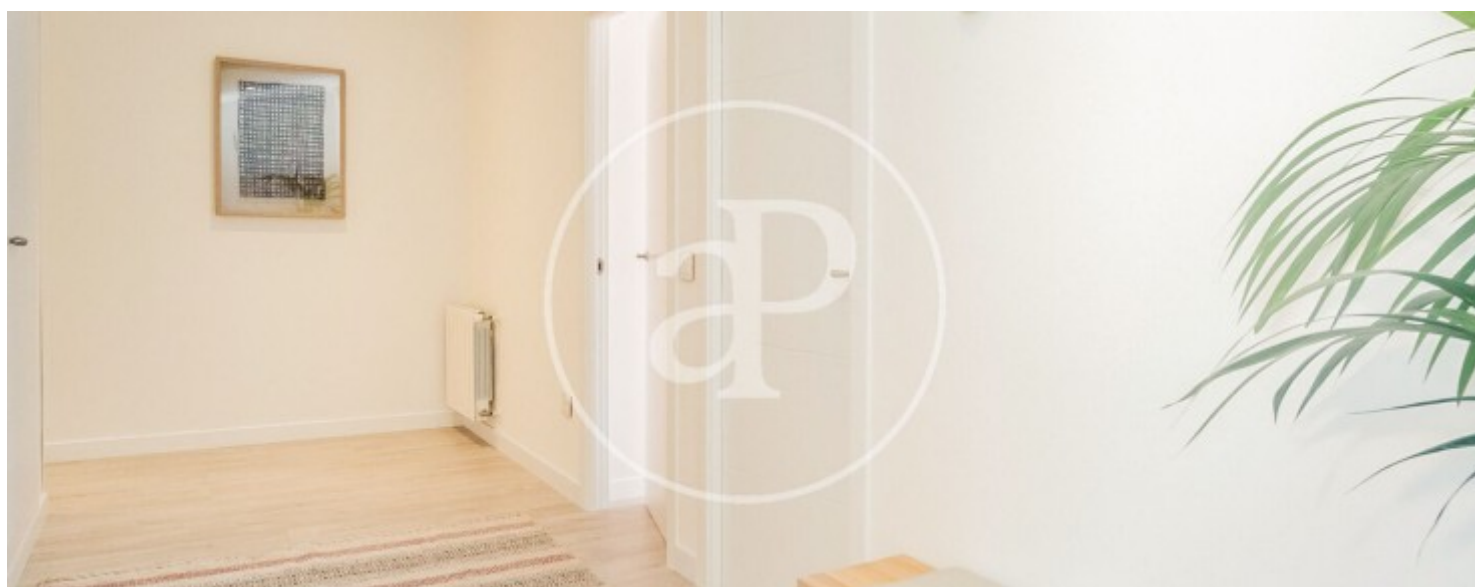
REF. AM2601068





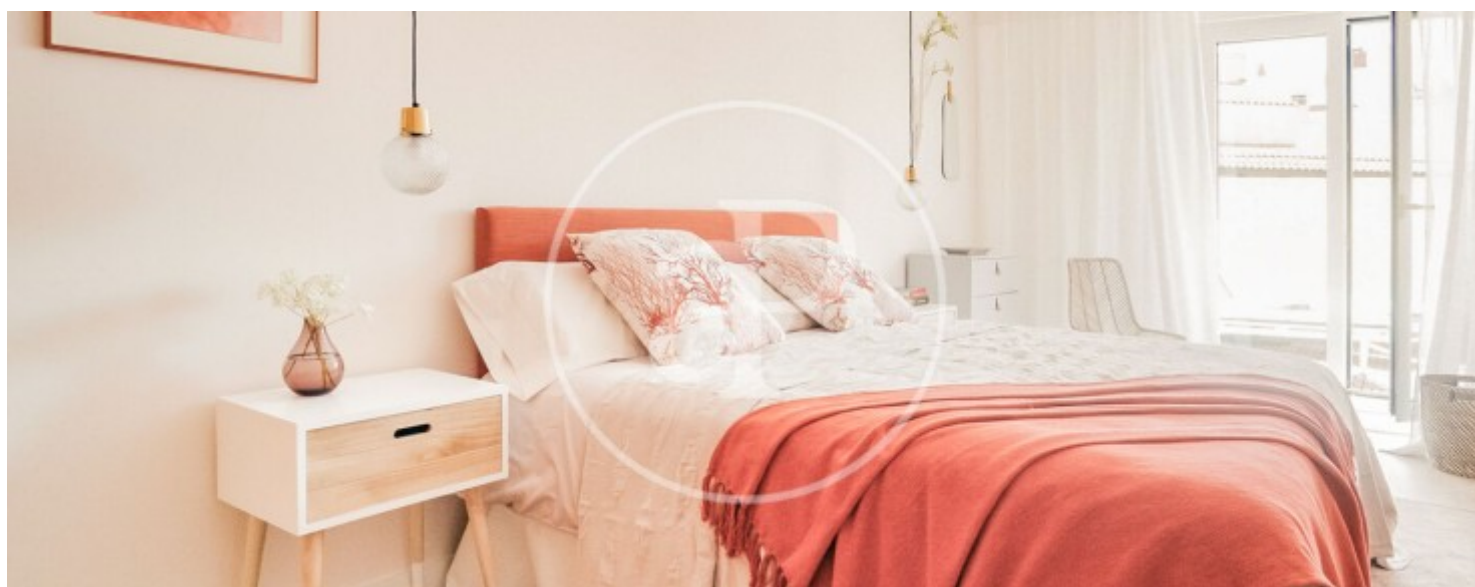
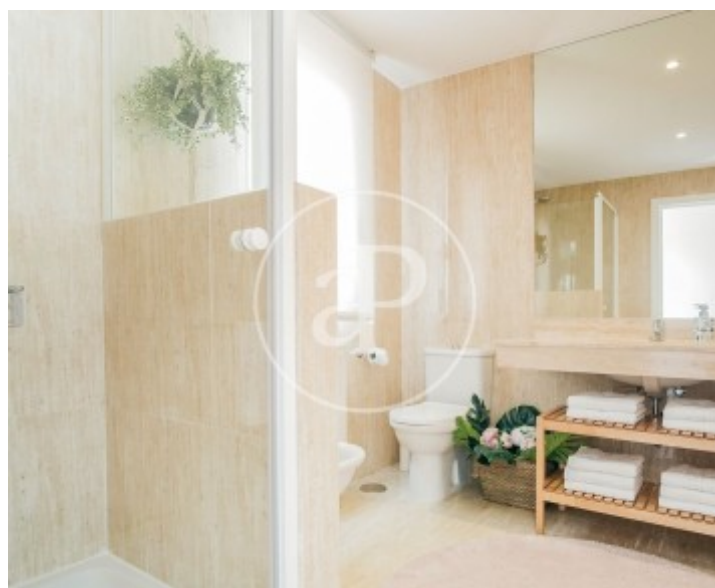
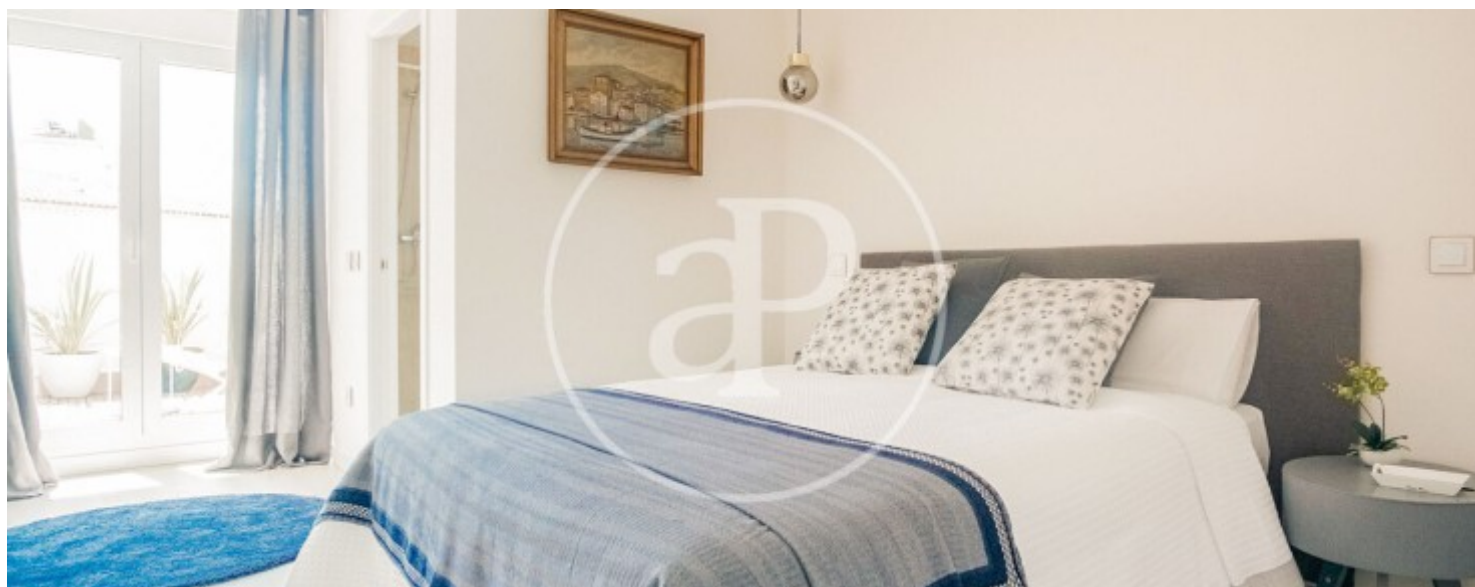
Palacio, Madrid

REF. AM2601068



Palacio, Madrid

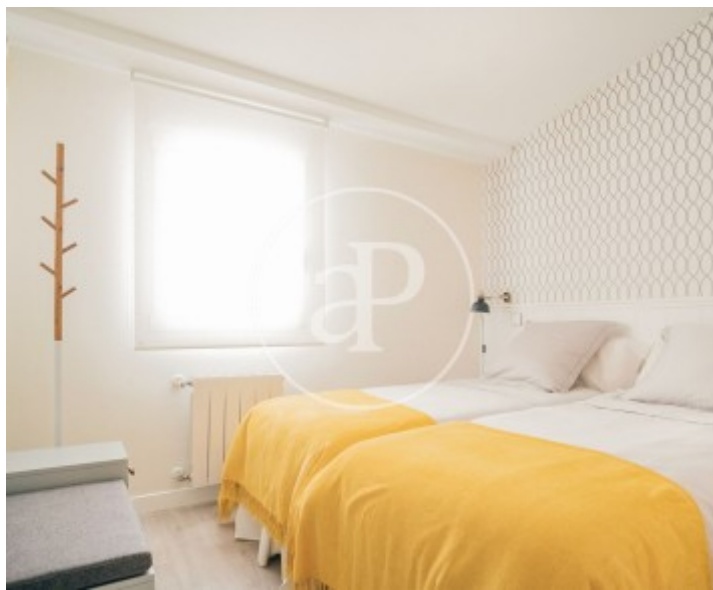
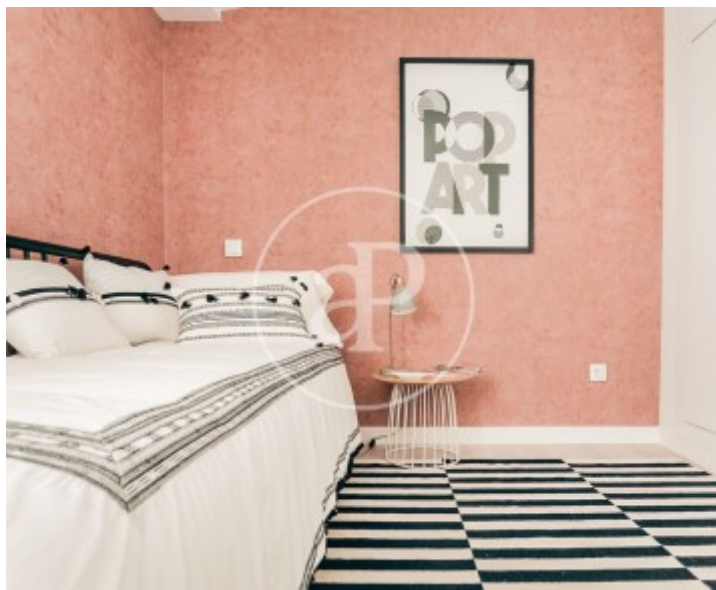
REF. AM2601068





Palacio, Madrid

REF. AM2601068



The information about any property is not binding to any offer or contract. Any verbal or written declaration made by aProperties with regards to the value or condition of the property should not be considered accurate or factual. The pictures make reference to some parts of the property at the times that they were taken. The areas, dimensions and distances that are given are approximate and should be checked by the client. The images are computer generated and are just an approximate indication of the real appearance of the property; these may change at any time. The information with regards to the property may also change at any time.

For **more information** or  
to make an appointment

[apropertiesmadrid@aproperties.es](mailto:apropertiesmadrid@aproperties.es)  
Tel: 91 800 54 65  
[www.aproperties.es](http://www.aproperties.es)