

Palacio, Madrid

REF. VM2603001

Flat for sale in Palacio

Features

- ✓ Heating
- ✓ AACC
- ✓ Lift

Surface
170 m²

Bedrooms
3

Bathrooms
3

Price
1,650,000 €



Discover this extraordinary house of 170 m², fully renovated with high quality finishes and ready to move in.

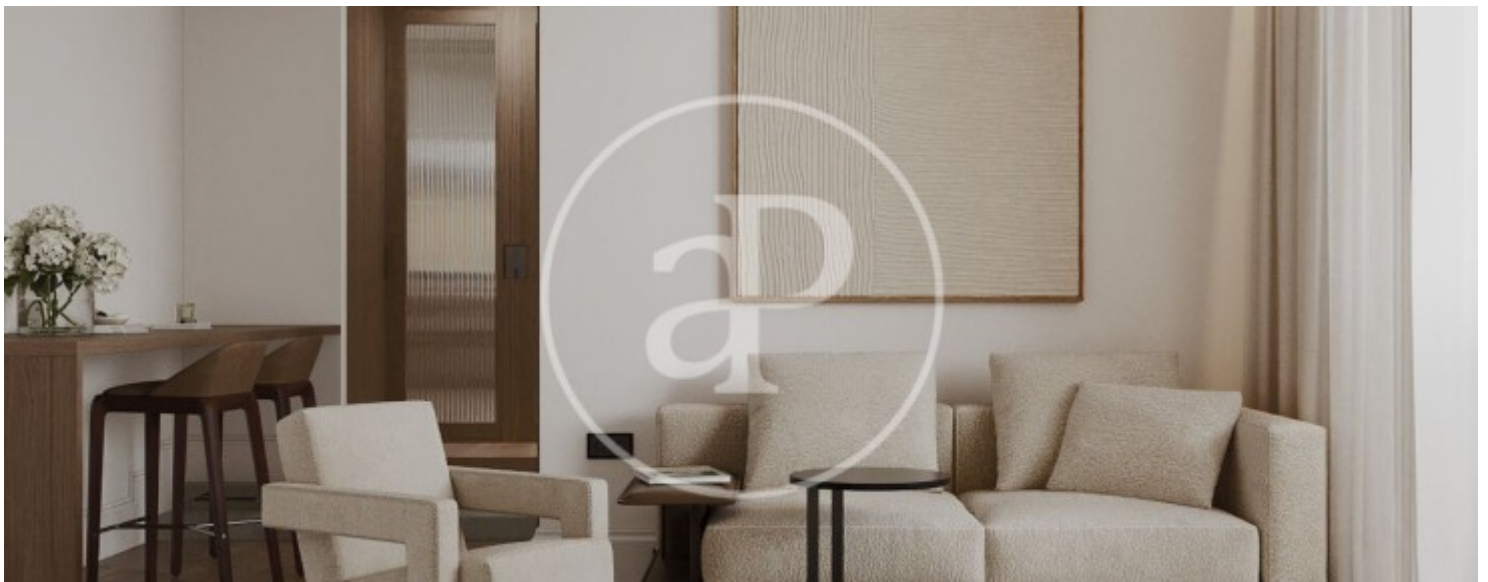
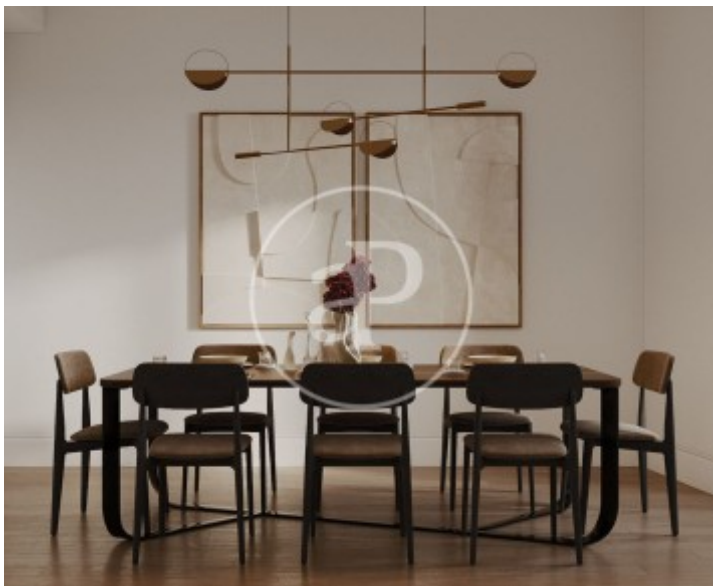
Located in a classic 1860 estate with elevator in the historic center, this property offers a perfect combination of architectural character and contemporary comfort. Distributed on two levels, the house stands out for its spacious rooms and 3.6-meter high ceilings, which further enhance the feeling of spaciousness and luminosity. On the main floor we find an impressive living-dining room with balconies to the street, semi-open kitchen with noble materials - natural oak and stone -, a spacious bedroom with en suite bathroom, courtesy toilet and a cozy

separate TV room. The lower floor houses a magnificent master suite with dressing room and private bathroom, conceived as an authentic space of rest and privacy. The comprehensive renovation has been carried out with special attention to detail: natural oak floors, carefully designed indirect lighting and ducted air conditioning system with zone control, ensuring maximum comfort throughout the year. Located a few meters from the Teatro Real, the Palacio Real and the Plaza Mayor, this property represents a unique opportunity to live and with a very high potential for profitability, as it is...

Contact us,
we will be happy to assist you,
to offer you more details and information.

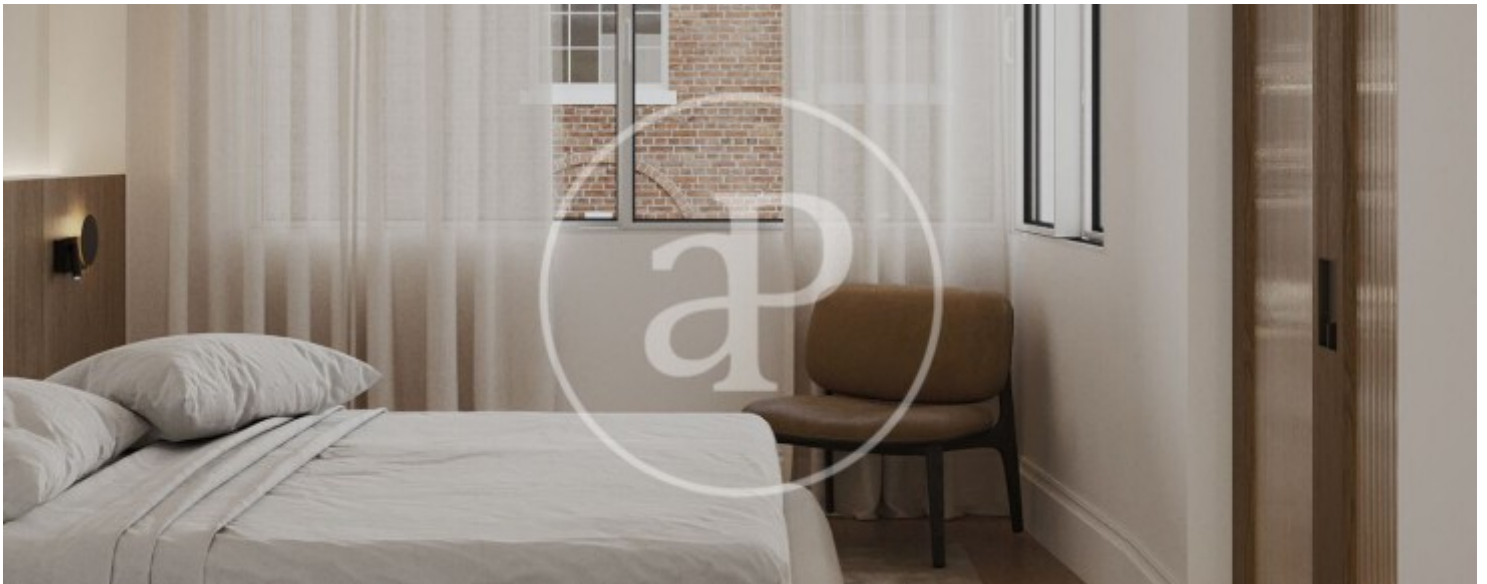
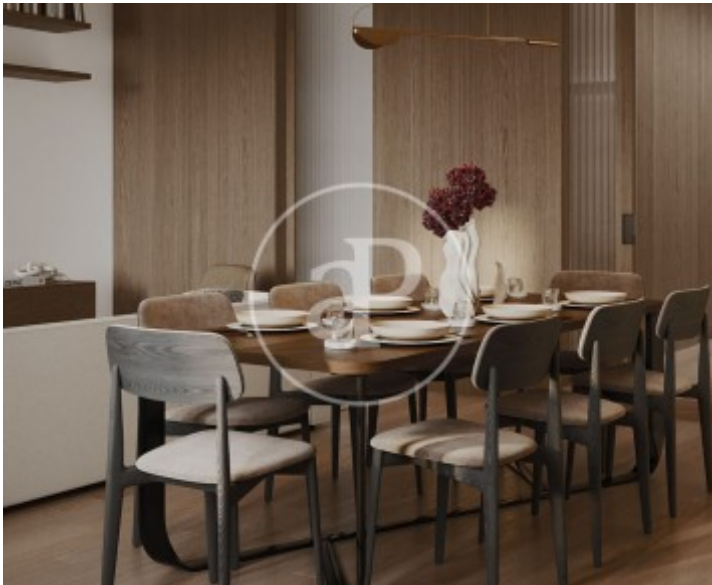
Palacio, Madrid

REF. VM2603001



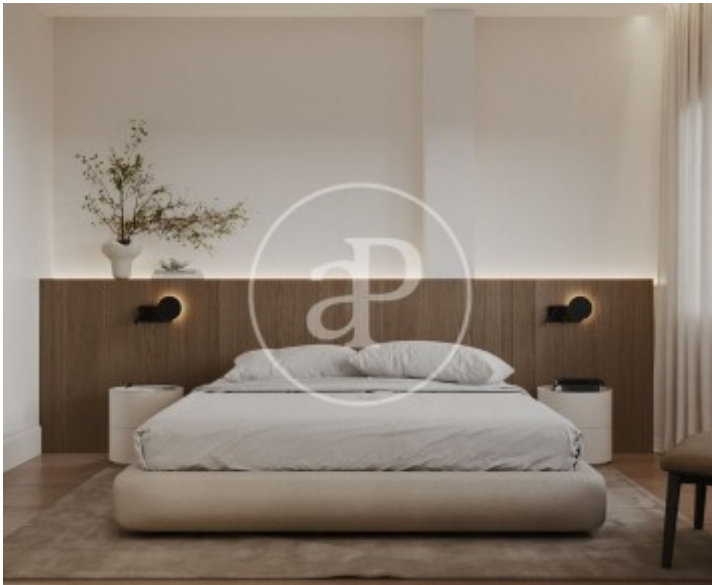
Palacio, Madrid

REF. VM2603001



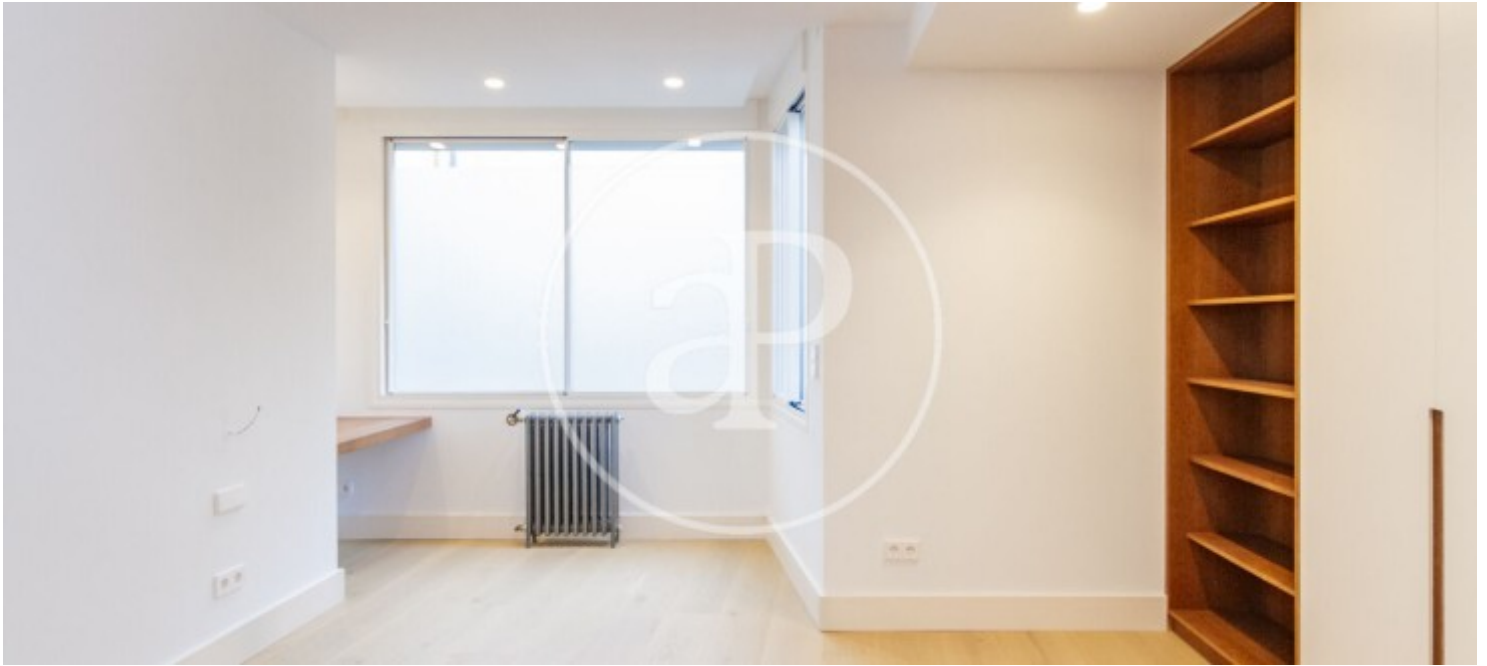
Palacio, Madrid

REF. VM2603001



Palacio, Madrid

REF. VM2603001



The information about any property is not binding to any offer or contract. Any verbal or written declaration made by aProperties with regards to the value or condition of the property should not be considered accurate or factual. The pictures make reference to some parts of the property at the times that they were taken. The areas, dimensions and distances that are given are approximate and should be checked by the client. The images are computer generated and are just an approximate indication of the real appearance of the property; these may change at any time. The information with regards to the property may also change at any time.

For **more information** or
to make an appointment

apropertiesmadrid@aproperties.es
Tel: 91 800 54 65
www.aproperties.es