

Palacio, Madrid

REF. VM2511042

Apartment for sale in Palacio

Features

- ✓ Views
- ✓ Heating
- ✓ Boxroom
- ✓ AACC
- ✓ Lift
- ✓ Has parking

Price
1,600,000 €

Surface
158 m²

Bedrooms
3

Bathrooms
3



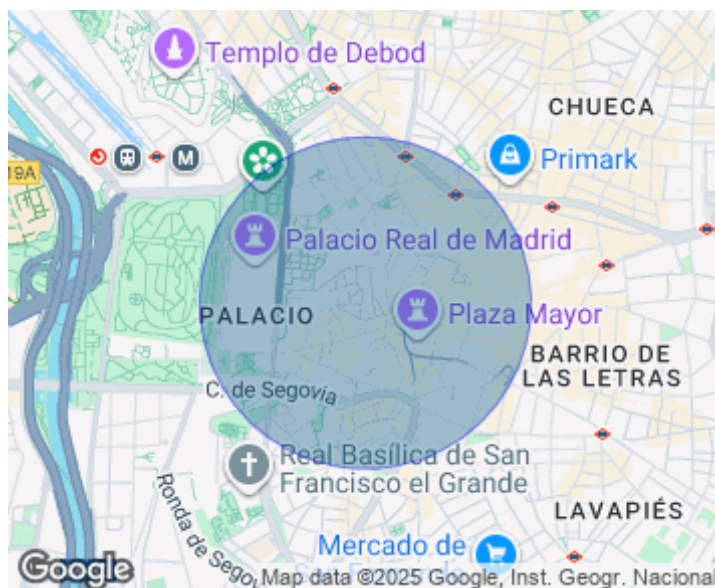
Located in the heart of Madrid, on the emblematic Calle Mayor, this spectacular 158 m² property offers an excellent opportunity for those seeking to live in one of the city's most traditional and central areas, with beautiful views of the neighborhood's classic facades. It is a third-floor apartment in a well-maintained, classic 1900 building with only two apartments per floor and a stately entrance. With an exceptional layout thanks to its square floor plan, the apartment features three double bedrooms, two of which have en-suite bathrooms and walk-in closets, plus a third bathroom serving the third bedroom. The master bedroom has a balcony overlooking the street. The open-plan kitchen boasts a magnificent island, as well as a practical laundry area and pantry adjacent to the kitchen. The

living-dining room, with two large balconies overlooking the street, allows for excellent natural light, creating a warm and inviting atmosphere throughout the property. The property has been renovated to a high standard, providing sophistication and luxury without sacrificing comfort and functionality, respecting classic elements of the estate, and taking care of every detail. The location is unbeatable, in a vibrant area of Madrid steeped in history and culture. Just steps away from major tourist attractions such as Plaza Mayor, the Royal Palace, and Puerta del Sol, as well as a wide array...

Contact us,
we will be happy to assist you,
to offer you more details and information.

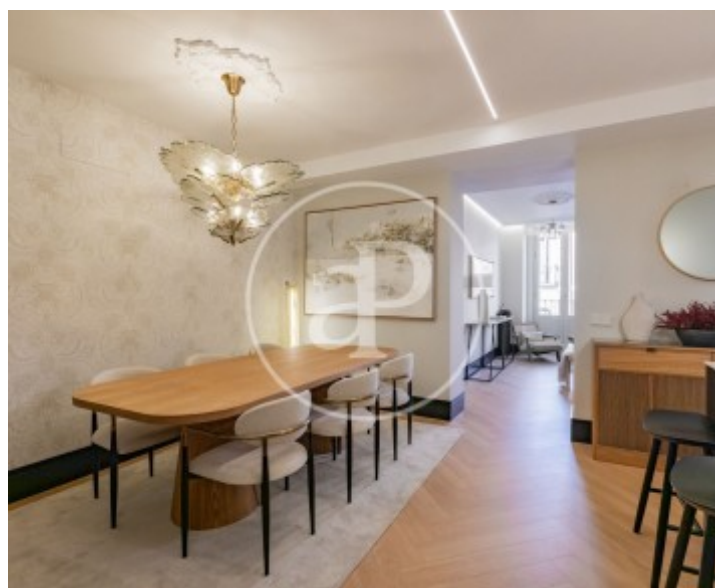
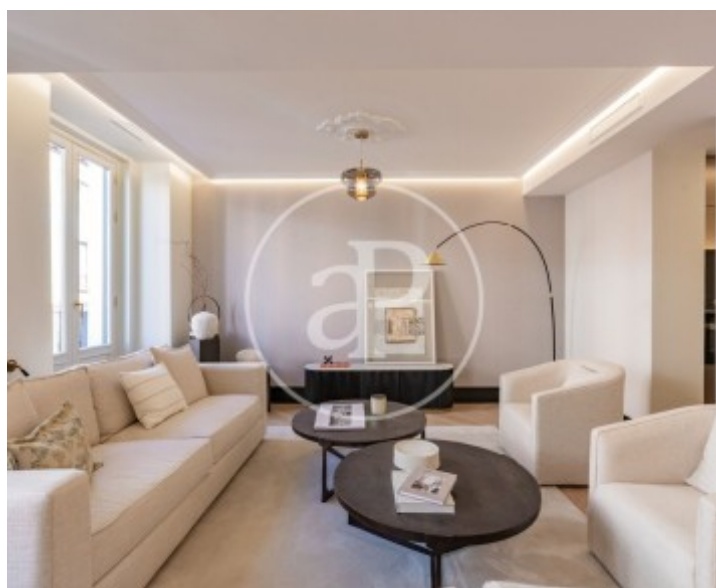
Palacio, Madrid

REF. VM2511042



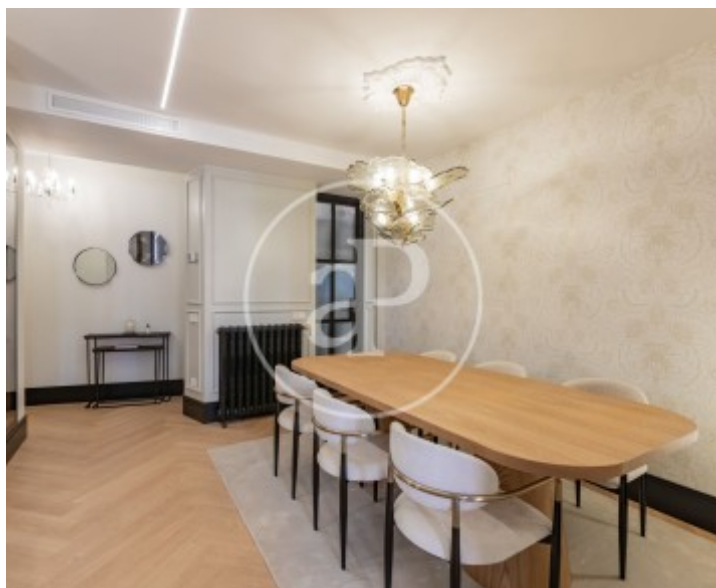
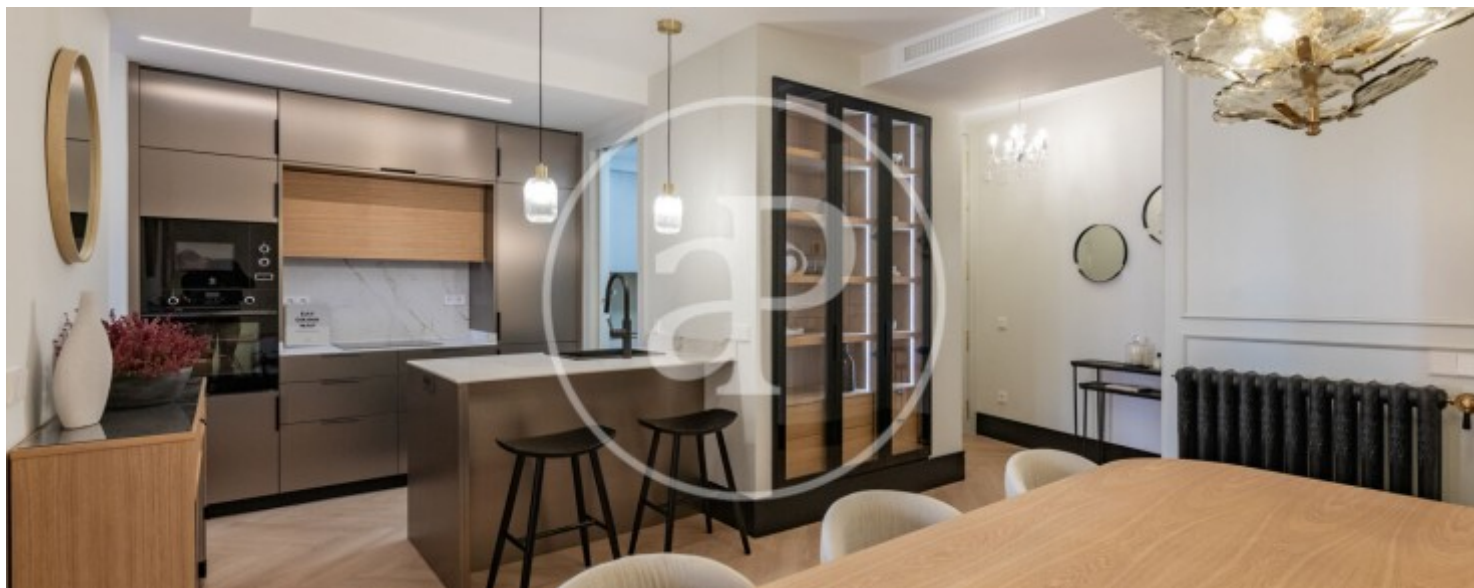
Palacio, Madrid

REF. VM2511042



Palacio, Madrid

REF. VM2511042



Palacio, Madrid

REF. VM2511042



The information about any property is not binding to any offer or contract. Any verbal or written declaration made by aProperties with regards to the value or condition of the property should not be considered accurate or factual. The pictures make reference to some parts of the property at the times that they were taken. The areas, dimensions and distances that are given are approximate and should be checked by the client. The images are computer generated and are just an approximate indication of the real appearance of the property; these may change at any time. The information with regards to the property may also change at any time.

For **more information** or
to make an appointment

apropertiesmadrid@aproperties.es
Tel: 91 800 54 65
www.aproperties.es