

Palacio, Madrid

REF. VM2602042

# Flat for sale in Palacio

## Features

- ✓ Views
- ✓ AACC
- ✓ Concierge
- ✓ Heating
- ✓ Lift

Surface

**148 m<sup>2</sup>**

Bedrooms

**2**

Bathrooms

**2**

Price

**1,398,000 €**



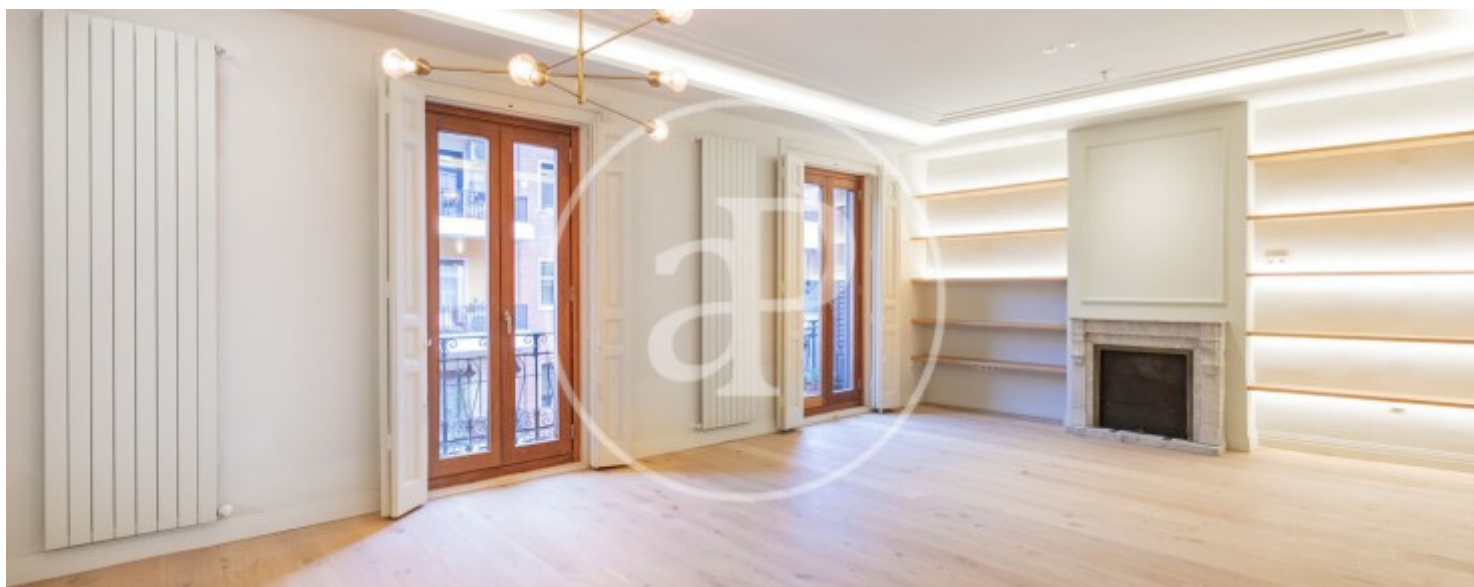
Aproperties presents this magnificent house of 148 m<sup>2</sup>, located in a classic estate in the heart of Madrid, very close to Tirso de Molina and ideal for those looking for spacious spaces, natural light and luxury finishes. The property is exterior, with balconies to the street that bring brightness and privileged views. It has two bedrooms and a third multifunctional space. It has been renovated with high quality materials and finishes, combining the charm of a classic Madrid estate with comfort and contemporary design. The living room integrates with the open kitchen, creating a diaphanous and elegant space, perfect for receiving visitors and enjoying daily life. Every detail has been carefully selected to offer comfort, style and functionality, reflecting an exceptional standard of luxury. Located in

one of the most sought after areas of Madrid, very close to Tirso de Molina, Latina and Sol, the house offers excellent communication with public transport, as well as easy access to shops, restaurants, leisure and all essential services of the city center. A location that combines history, urban life and comfort. A unique opportunity to acquire a luxury apartment in the heart of Madrid, ideal for those seeking a home with character, light and unbeatable location. Some of these images have been treated with I.A. and may not correspond to reality. Can you imagine living here?

**Contact us,**  
we will be happy to assist you,  
to offer you more details and information.

Palacio, Madrid

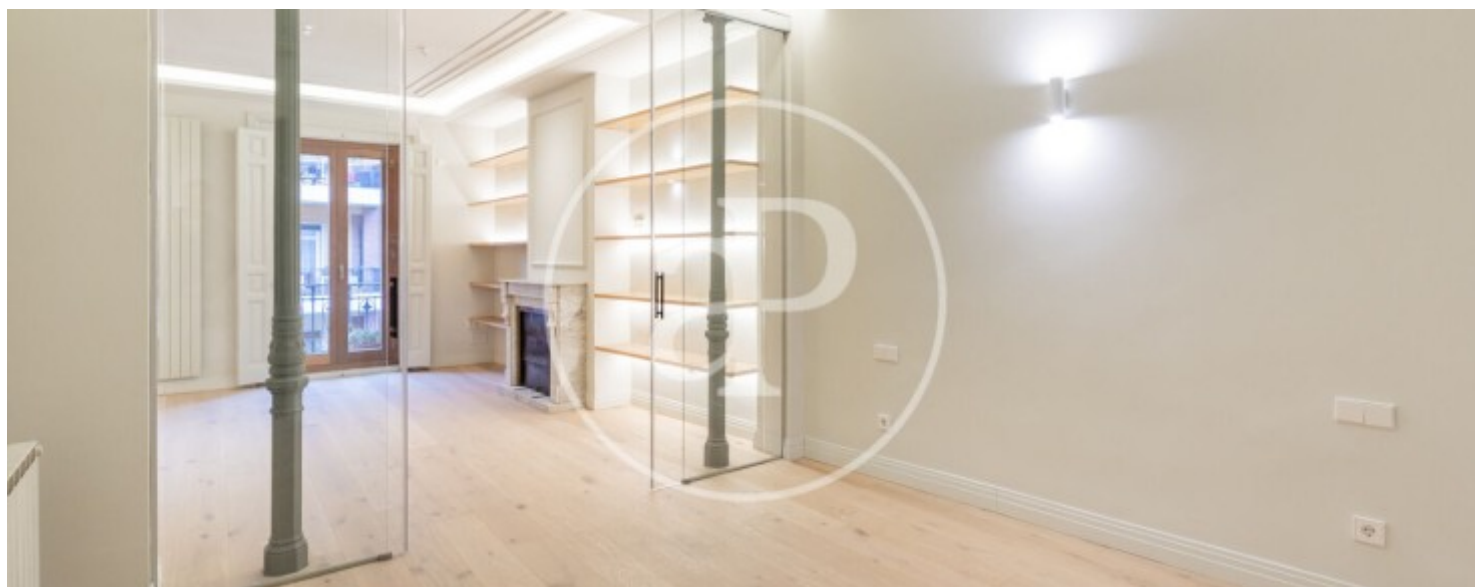
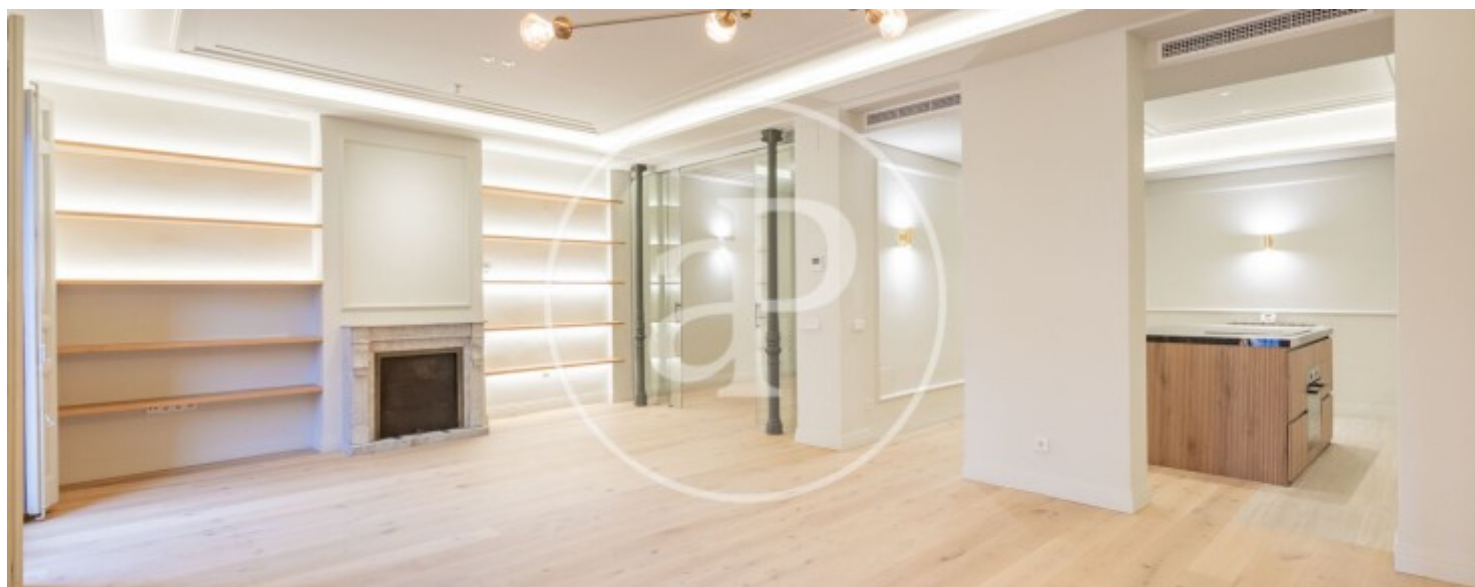
REF. VM2602042





Palacio, Madrid

REF. VM2602042



Palacio, Madrid

REF. VM2602042





Palacio, Madrid

REF. VM2602042



The information about any property is not binding to any offer or contract. Any verbal or written declaration made by aProperties with regards to the value or condition of the property should not be considered accurate or factual. The pictures make reference to some parts of the property at the times that they were taken. The areas, dimensions and distances that are given are approximate and should be checked by the client. The images are computer generated and are just an approximate indication of the real appearance of the property; these may change at any time. The information with regards to the property may also change at any time.

For **more information** or  
to make an appointment

[apropertiesmadrid@aproperties.es](mailto:apropertiesmadrid@aproperties.es)  
Tel: 91 800 54 65  
[www.aproperties.es](http://www.aproperties.es)