



Palacio, Madrid

REF. VM2407059

Flat for sale in Plaza del Conde de Miranda

Features

- ✓ Heating
- ✓ AACC
- ✓ Lift

Surface

104 m²

Bedroom

1

Bathroom

1

Price

625,000 €



Located in the heart of Madrid de los Austrias, in one of the most sought-after squares in the central district, aProperties offers for sale this 104-metre property to be updated.

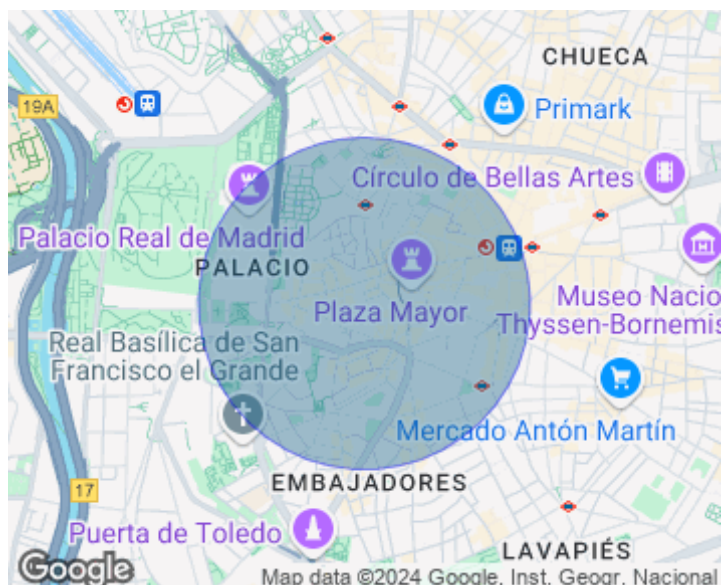
The house is accessed through a beautiful portal representative of the area. Inside, the building has a spectacular landscaped courtyard. The property, located on the fourth floor, is currently distributed in a very spacious living-dining room with high ceilings and lots of light. In the interior, it has been opted for large and uncluttered spaces, and for this reason it is currently distributed in a bedroom, kitchen and a bathroom, but due to its height and size, the house could easily be

converted into a loft, with many possibilities to modernise and even convert it into a flat with 2 bedrooms and 2 bathrooms, or even 3, given its square metres. There is only one residential building in the square, so there is hardly any real estate available in this exclusive and iconic location. It is, therefore, a unique and unrepeatable opportunity to acquire a house in an emblematic building. The Plaza del Conde de Miranda is located in the so-called "Madrid de los Austrias" between the Plaza Mayor and the Plaza de la Villa, the historic centre of the city. It is a...

Contact us,
we will be happy to assist you,
to offer you more details and information.

Palacio, Madrid

REF. VM2407059



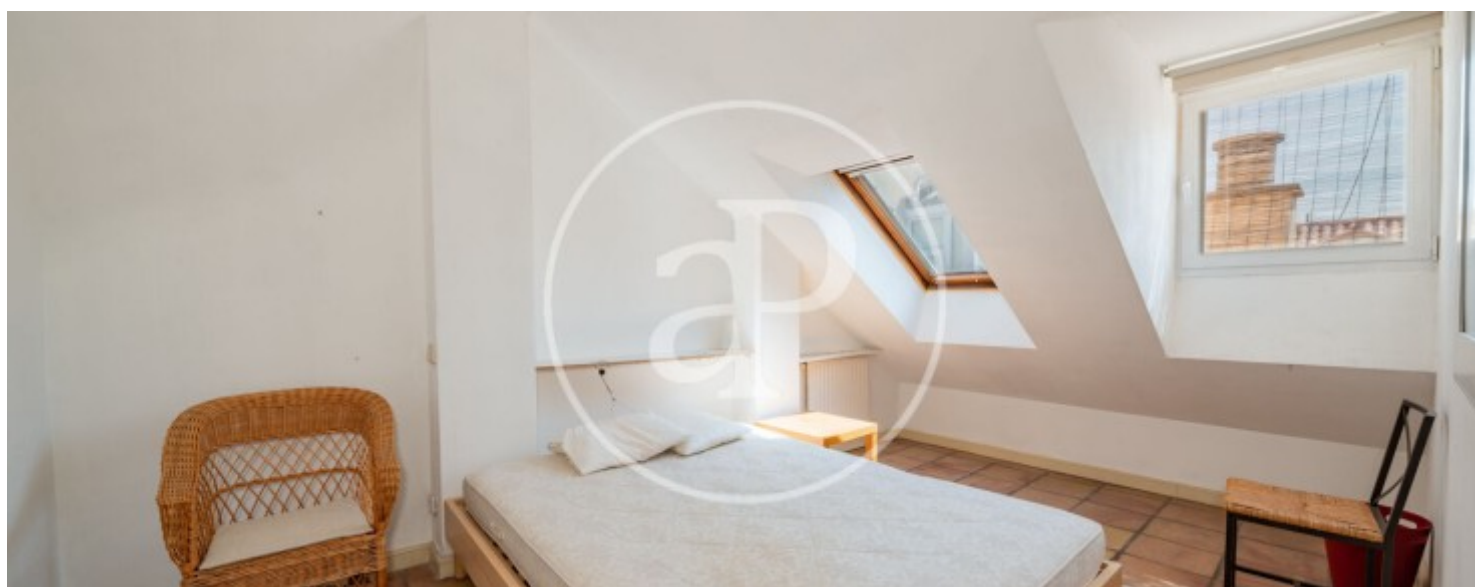
Palacio, Madrid

REF. VM2407059



Palacio, Madrid

REF. VM2407059



Palacio, Madrid

REF. VM2407059



The information about any property is not binding to any offer or contract. Any verbal or written declaration made by aProperties with regards to the value or condition of the property should not be considered accurate or factual. The pictures make reference to some parts of the property at the times that they were taken. The areas, dimensions and distances that are given are approximate and should be checked by the client. The images are computer generated and are just an approximate indication of the real appearance of the property; these may change at any time. The information with regards to the property may also change at any time.

For **more information** or
to make an appointment

apropertiesmadrid@aproperties.es
Tel: 91 800 54 65
www.aproperties.es