

Pacífico, Madrid

REF. AM2310043



## Flat for rent in Pacífico (Madrid)

### Features

- ✓ Heating
- ✓ AACC
- ✓ Concierge
- ✓ Furnished
- ✓ Lift
- ✓ Has parking

Price

**3,250 €**

Surface

**170 m<sup>2</sup>**

Bedrooms

**3**

Bathrooms

**2**



### Elegant and quiet apartment located very close to the Retiro Park.

Apartment in 3rd floor totally exterior with elevator, first qualities and with 3 bedrooms, 1 office, 2 bathrooms, living room (35 m2) and kitchen (25 m2) with clothesline. 1 parking space. - Community fees, heating, home insurance and garage INCLUDED. - Extraordinary insulation (soundproofing, cold and heat) with PVC exterior carpentry with double glazing (climalit with air chamber). - Parquet floors, white lacquered MDF doors, large number of fully fitted closets. Armored security door. - Communal central heating and hot water by city gas boiler. - Air conditioning (heat pump and cold) in master

bedroom and living room. - 1 parking space with direct elevator from the house. - Building equipped with access system for people with reduced mobility. - The apartment is fully furnished. Unbeatable communications 10 minutes from Puerta del Sol. Next to the Metro stop of Méndez Álvaro and Pacífico; 5 min. from Atocha Train Station and Méndez Álvaro Bus Station; direct connections with M-30 and Valencia Highway (N-III). The area has all the necessary endowment and leisure services: Municipal sports center with indoor swimming pool, gyms, indoor sports...

**Contact us,**  
we will be happy to assist you,  
to offer you more details and information.

Pacífico, Madrid

REF. AM2310043





Pacífico, Madrid

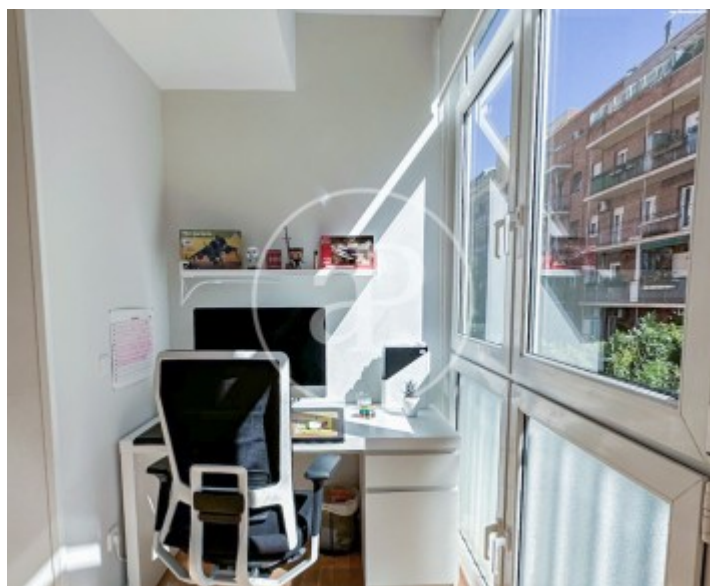
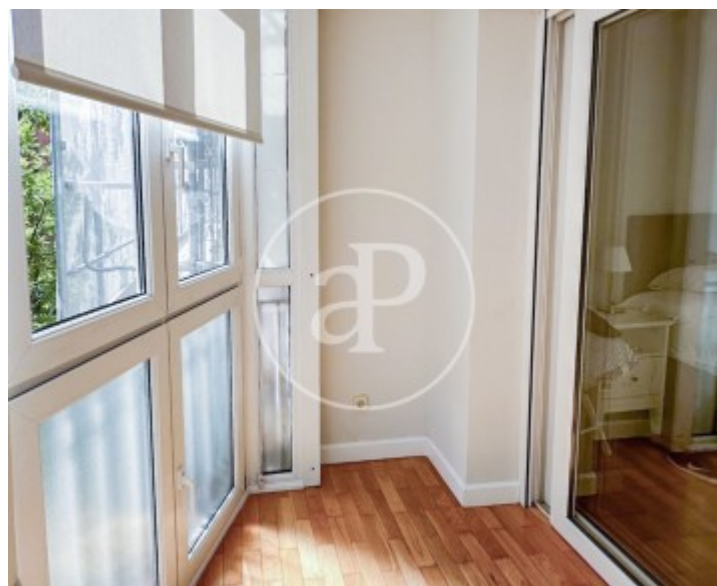
REF. AM2310043





Pacífico, Madrid

REF. AM2310043





**APROPERTIES**  
REAL ESTATE

Calle Serrano 60  
28001 Madrid  
T. 91 800 54 65  
[www.aproperties.es](http://www.aproperties.es)

Pacífico, Madrid

REF. AM2310043



The information about any property is not binding to any offer or contract. Any verbal or written declaration made by aProperties with regards to the value or condition of the property should not be considered accurate or factual. The pictures make reference to some parts of the property at the times that they were taken. The areas, dimensions and distances that are given are approximate and should be checked by the client. The images are computer generated and are just an approximate indication of the real appearance of the property; these may change at any time. The information with regards to the property may also change at any time.



For **more information** or  
to make an appointment

[apropertiesmadrid@aproperties.es](mailto:apropertiesmadrid@aproperties.es)  
Tel: 91 800 54 65  
[www.aproperties.es](http://www.aproperties.es)