



Pacífico, Madrid

REF. VM2601084

Flat for sale in Pacífico

Features

- ✓ Heating
- ✓ AACC
- ✓ Furnished
- ✓ Terrace

Price

560,000 €

Surface

73 m²

Bedrooms

3

Bathrooms

2



Living in Pacific is betting on one of the most complete neighborhoods and with greater projection of the district Retiro.

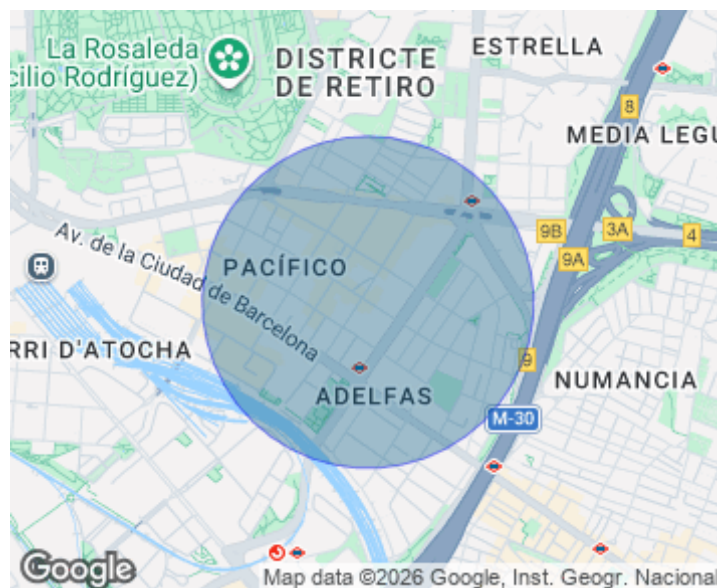
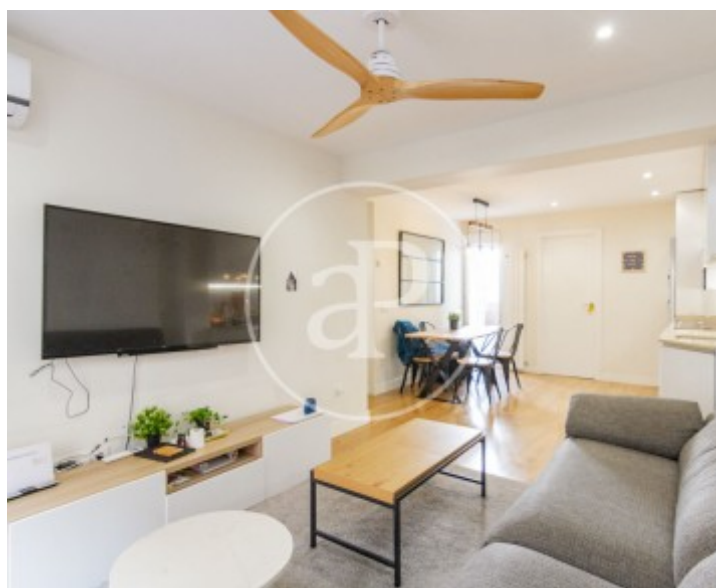
It stands out for its excellent connections, with the Atocha Station, the interchange of Conde de Casal, metro lines 1 and 6, multiple bus lines and quick and convenient access to the M-30, which facilitates any movement in and out of the city. To all this is added a quiet and safe environment, with a very consolidated residential environment and all the facilities for everyday life: shops, supermarkets, schools and services just a few steps away. Its proximity to the center of Madrid and the Parque del Retiro, together with the improvement

projects of the area, make it a booming neighborhood, increasingly in demand. The house is in very good condition and transmits a sense of balance and harmony in each room. The layout is particularly well thought out, with provided spaces, comfortable and easy to furnish, where nothing is left over and everything fits. The kitchen-living room in American style provides spaciousness and visual continuity, becoming a practical and cozy space for everyday life. The house has windows in all rooms, which guarantees an excellent entry of natural light and a pleasant cross ventilation, creating a...

Contact us,
we will be happy to assist you,
to offer you more details and information.

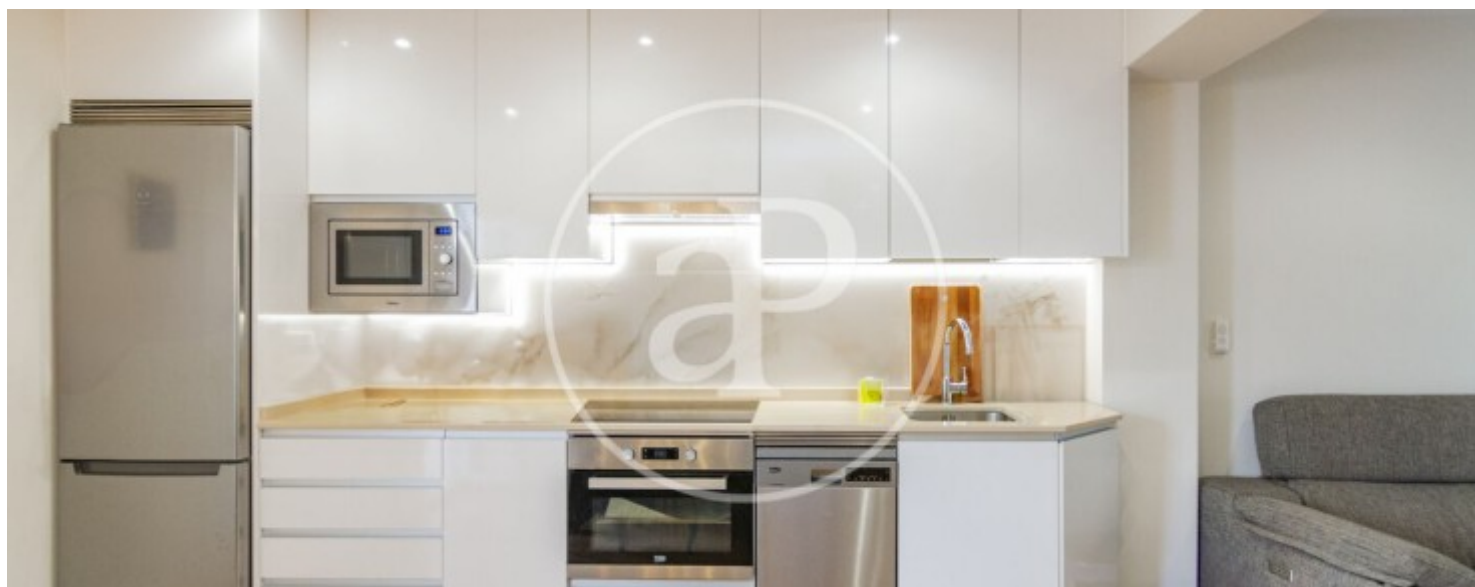
Pacífico, Madrid

REF. VM2601084



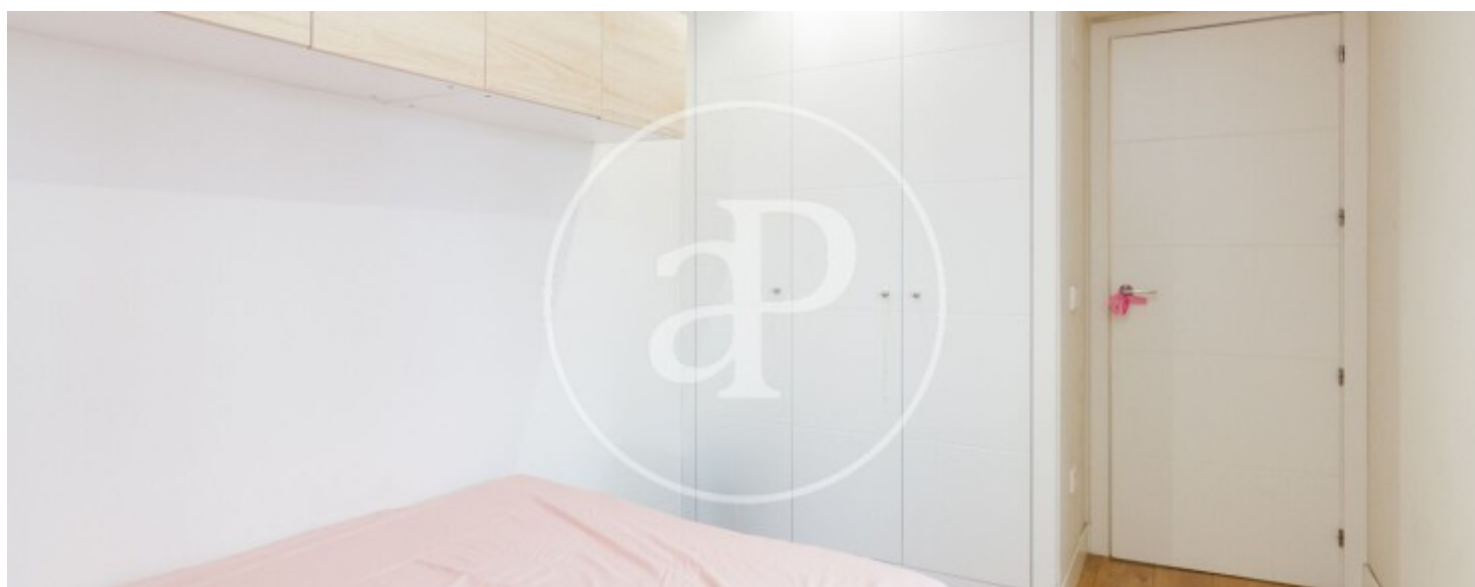
Pacífico, Madrid

REF. VM2601084



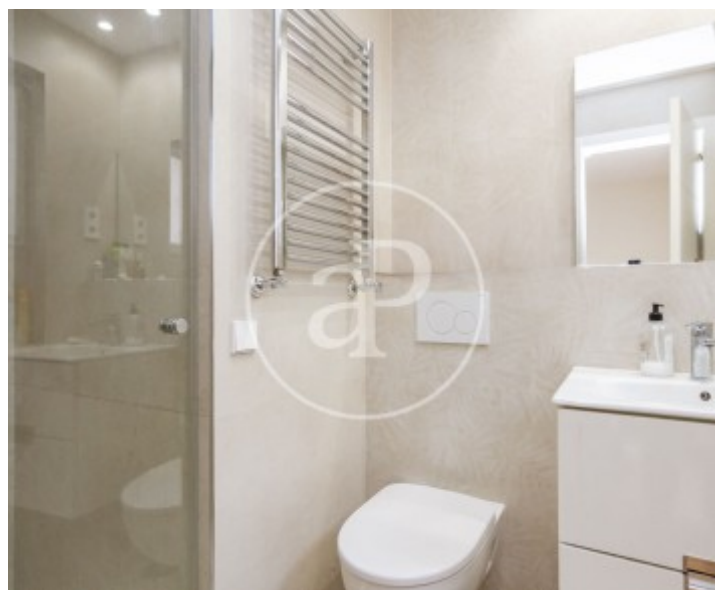
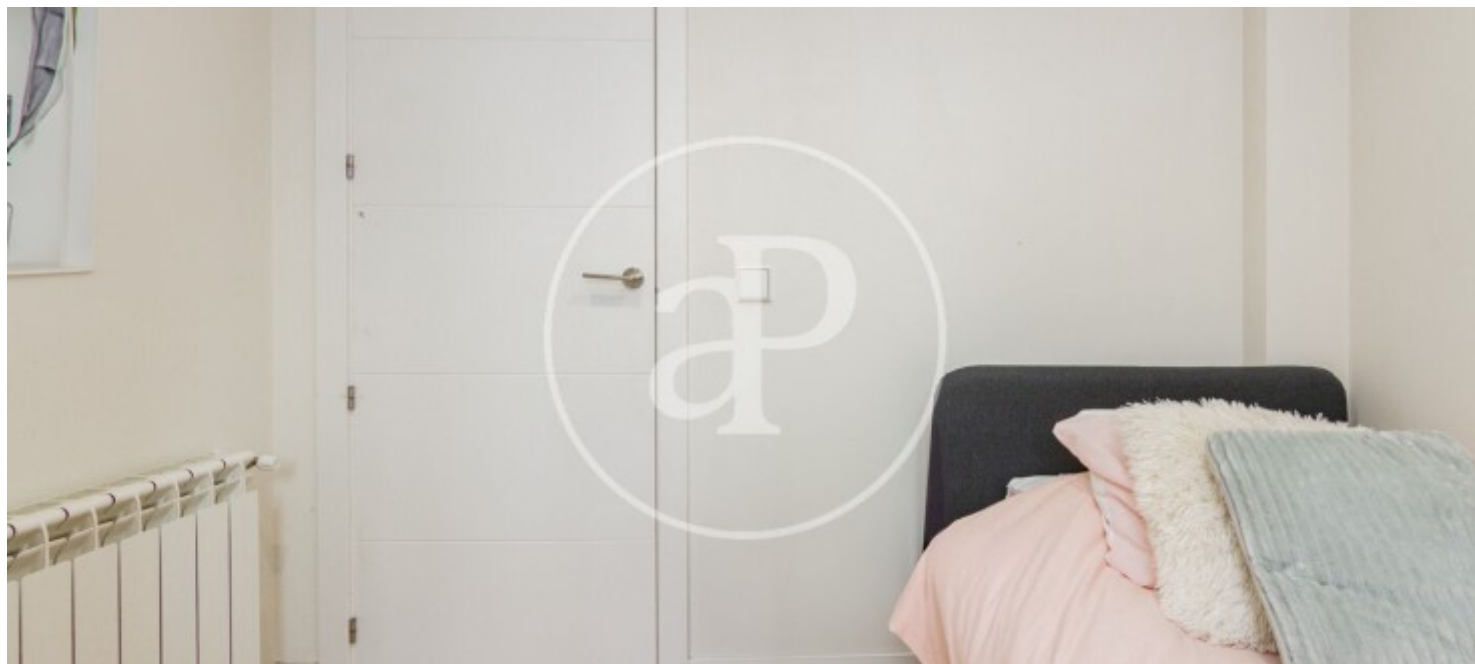
Pacífico, Madrid

REF. VM2601084



Pacífico, Madrid

REF. VM2601084



The information about any property is not binding to any offer or contract. Any verbal or written declaration made by aProperties with regards to the value or condition of the property should not be considered accurate or factual. The pictures make reference to some parts of the property at the times that they were taken. The areas, dimensions and distances that are given are approximate and should be checked by the client. The images are computer generated and are just an approximate indication of the real appearance of the property; these may change at any time. The information with regards to the property may also change at any time.

For **more information** or
to make an appointment

apropertiesmadrid@aproperties.es
Tel: 91 800 54 65
www.aproperties.es