

Pacífico, Madrid

REF. VM2607019

# Flat for sale in Pacífico

## Features

Surface

**53 m<sup>2</sup>**

Bedrooms

**2**

Bathroom

**1**

✓ Lift

Price

**330,000 €**



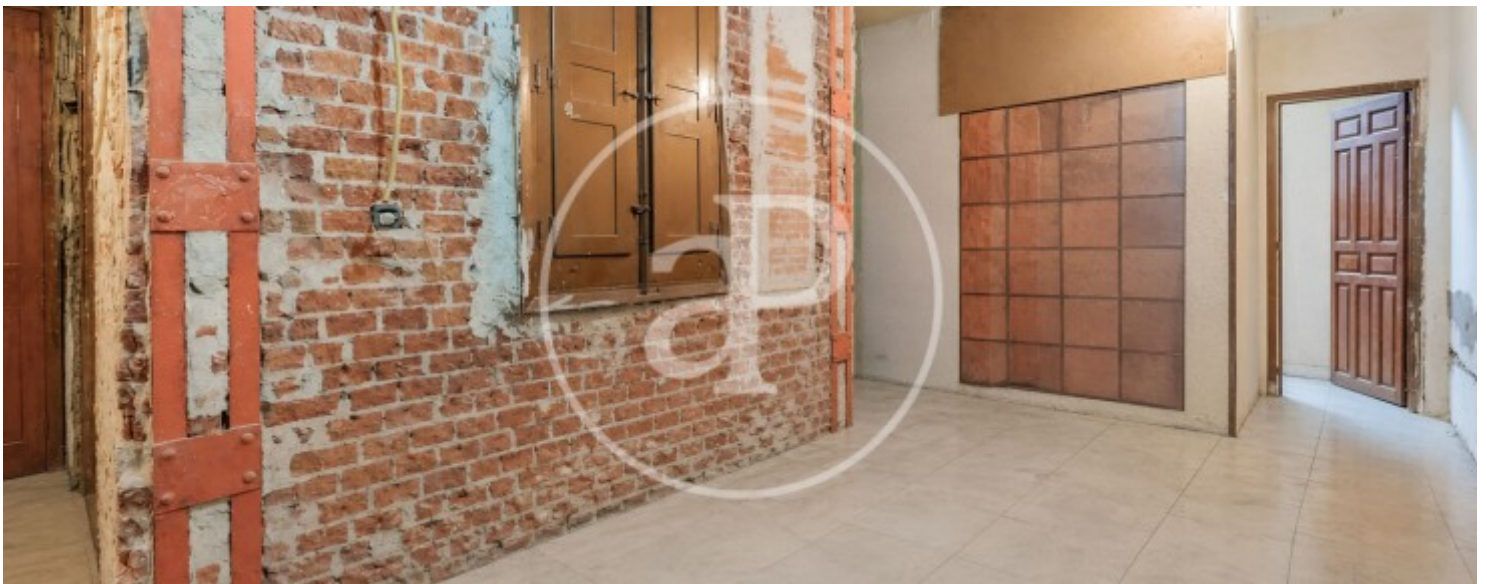
In the heart of Pacífico, just a few meters from El Retiro Park, the Basilica of Nuestra Señora de Atocha, the Madrid Metro station, and the Madrid-Puerta de Atocha-Almudena Grandes Station, we present an investment opportunity that is hard to find in one of the capital's most consolidated neighborhoods with the highest demand. The property, with 53 m<sup>2</sup> of built area, is completely demolished, offering an authentic blank canvas to develop a comprehensive renovation tailored to current market needs. Its configuration allows for the design of an attractive layout featuring a living room with an integrated kitchen, two generously sized bedrooms, and one bathroom, maximizing every square meter. With the aim of helping to visualize the full potential of the property, the advertisement will

include indicative renders of a possible renovation proposal. These images are purely illustrative and will allow for an appreciation of how the property could be transformed, making it easier for the buyer to imagine the final result and the possibilities this asset offers. Located in a 1960 building with an elevator, adapted entrance, and a favorable ITE (Technical Building Inspection) passed in 2024, the property also features access to a private-use courtyard, an uncommon added value in properties of these characteristics. With six windows and a ceiling height of nearly three meters, the...

**Contact us,**  
we will be happy to assist you,  
to offer you more details and information.

Pacífico, Madrid

REF. VM2607019





APROPERTIES  
REAL ESTATE

Calle Serrano 60  
28001 Madrid  
T. 91 800 54 65  
[www.aproperties.es](http://www.aproperties.es)

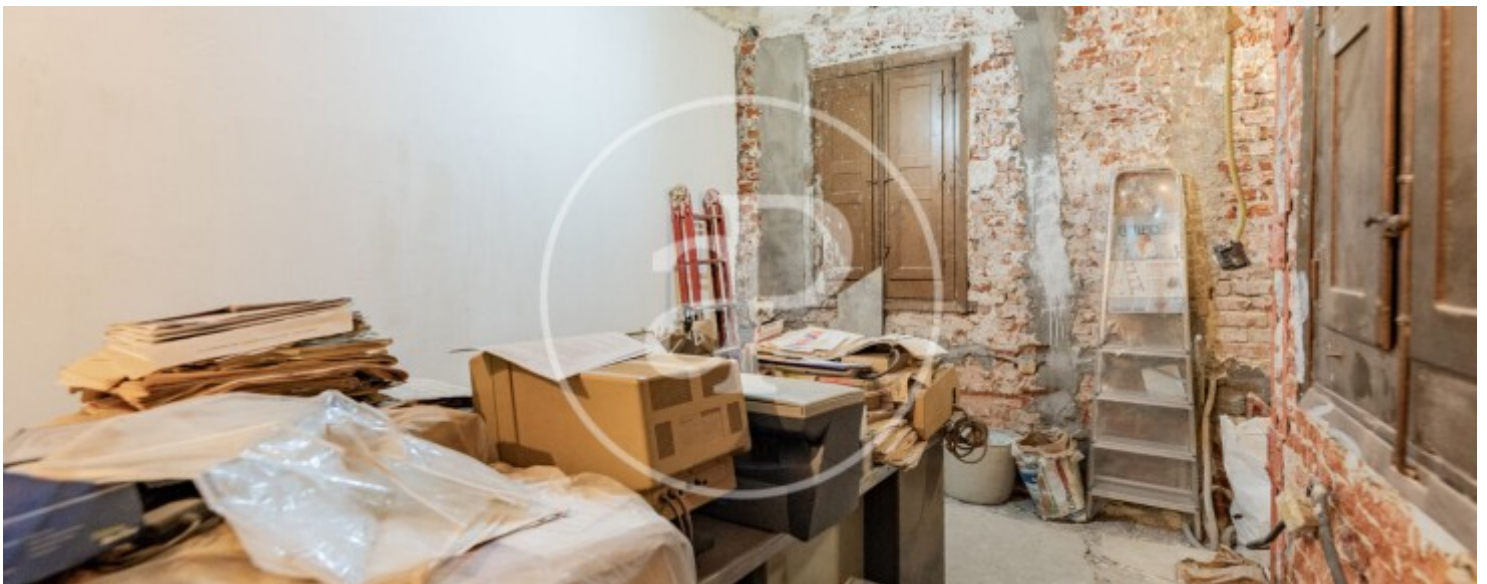
Pacífico, Madrid

REF. VM2607019



Pacífico, Madrid

REF. VM2607019



Pacífico, Madrid

REF. VM2607019



The information about any property is not binding to any offer or contract. Any verbal or written declaration made by aProperties with regards to the value or condition of the property should not be considered accurate or factual. The pictures make reference to some parts of the property at the times that they were taken. The areas, dimensions and distances that are given are approximate and should be checked by the client. The images are computer generated and are just an approximate indication of the real appearance of the property; these may change at any time. The information with regards to the property may also change at any time.

For **more information** or  
to make an appointment

[apropertiesmadrid@aproperties.es](mailto:apropertiesmadrid@aproperties.es)  
Tel: 91 800 54 65  
[www.aproperties.es](http://www.aproperties.es)