



Pacífico, Madrid

REF. VM2511034

Apartment for sale on Abtao Street

Features

- ✓ Heating
- ✓ AACC

Price

580,000 €

Surface

101 m²

Bedroom

1

Bathroom

1



This is a first-floor, exterior apartment of 101 m², of which 89 m² are living space according to the land registry.

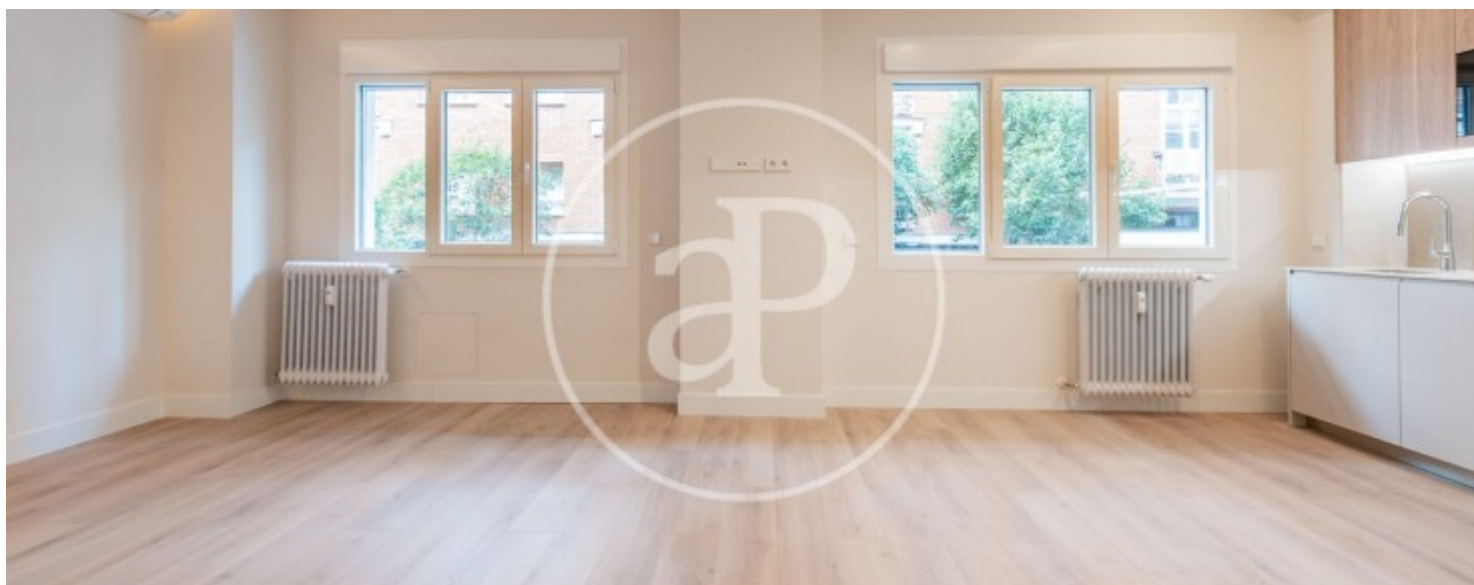
It has direct street access through its own private entrance, located in a building dating from 1970, with a meticulous and complete renovation in 2024. The apartment is accessed via a private staircase leading to an open-plan living area with six west-facing windows. These double-glazed windows with thermal insulation flood the living-dining room with a fully equipped integrated kitchen. It features an elegant and bright east-facing double bedroom and a designer bathroom. Very inviting. This apartment is perfect for those seeking

independence. The building has regulations prohibiting tourist rentals, ensuring a peaceful and stable residential environment. The Pacífico neighborhood is one of the most prominent in Madrid's Retiro district. Located southeast of Retiro Park, this neighborhood offers excellent connectivity with metro stations like Pacífico and Menéndez Pelayo, as well as numerous bus lines that crisscross the city. Proximity to schools such as the Sacred Heart of Jesus School is a key factor for many families who choose to live in this area. The neighborhood boasts a wide range of...

Contact us,
we will be happy to assist you,
to offer you more details and information.

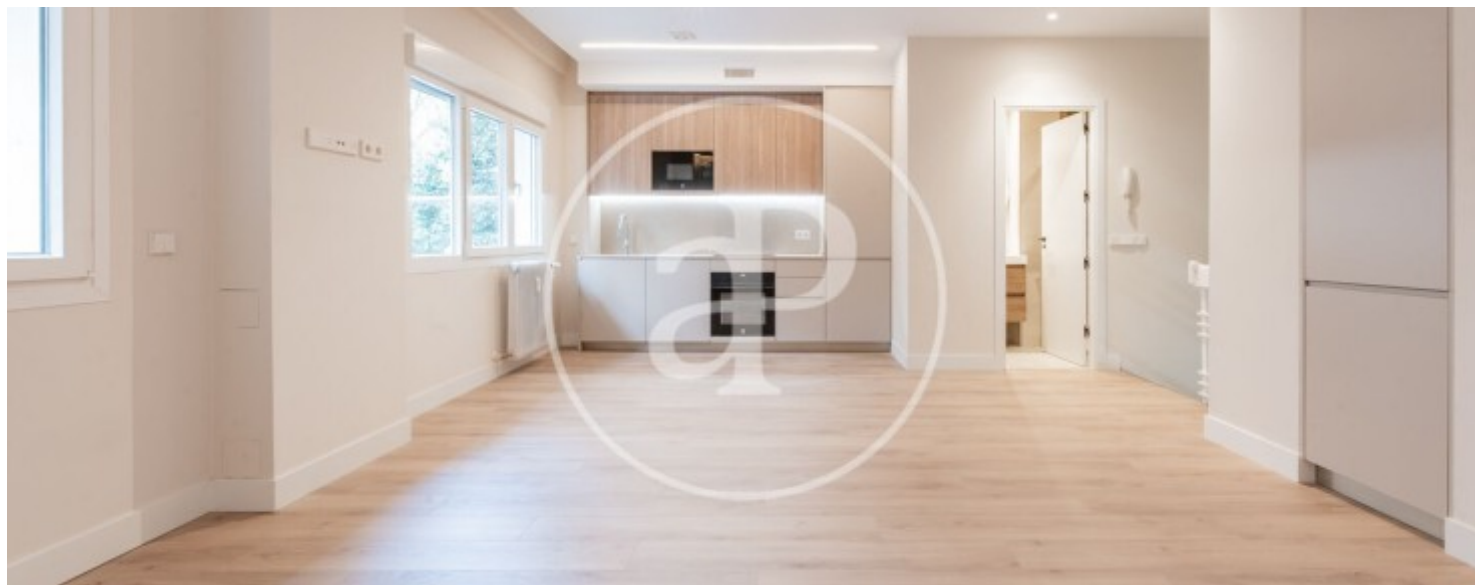
Pacífico, Madrid

REF. VM2511034



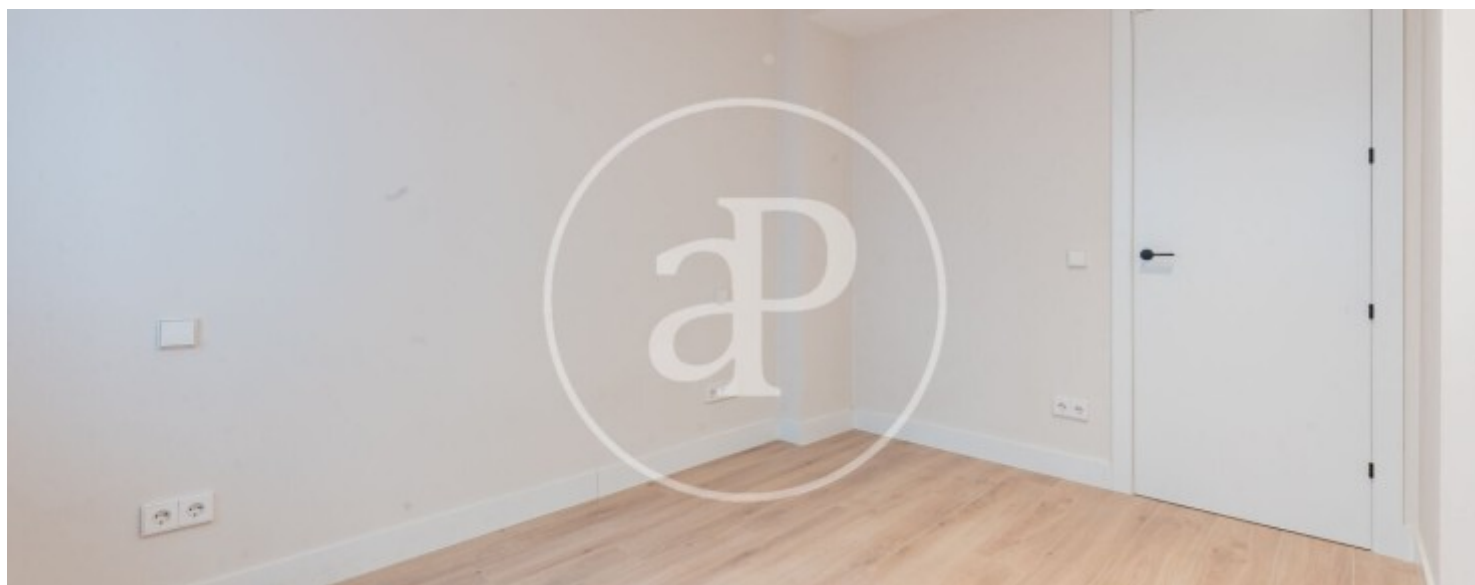
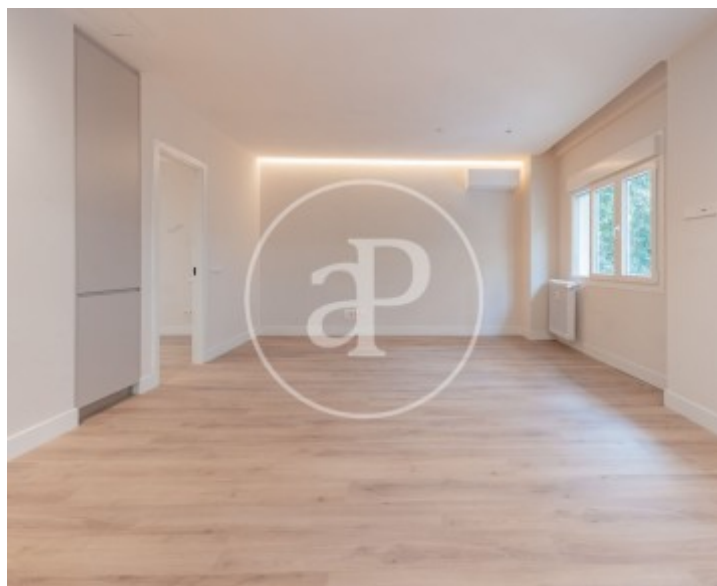
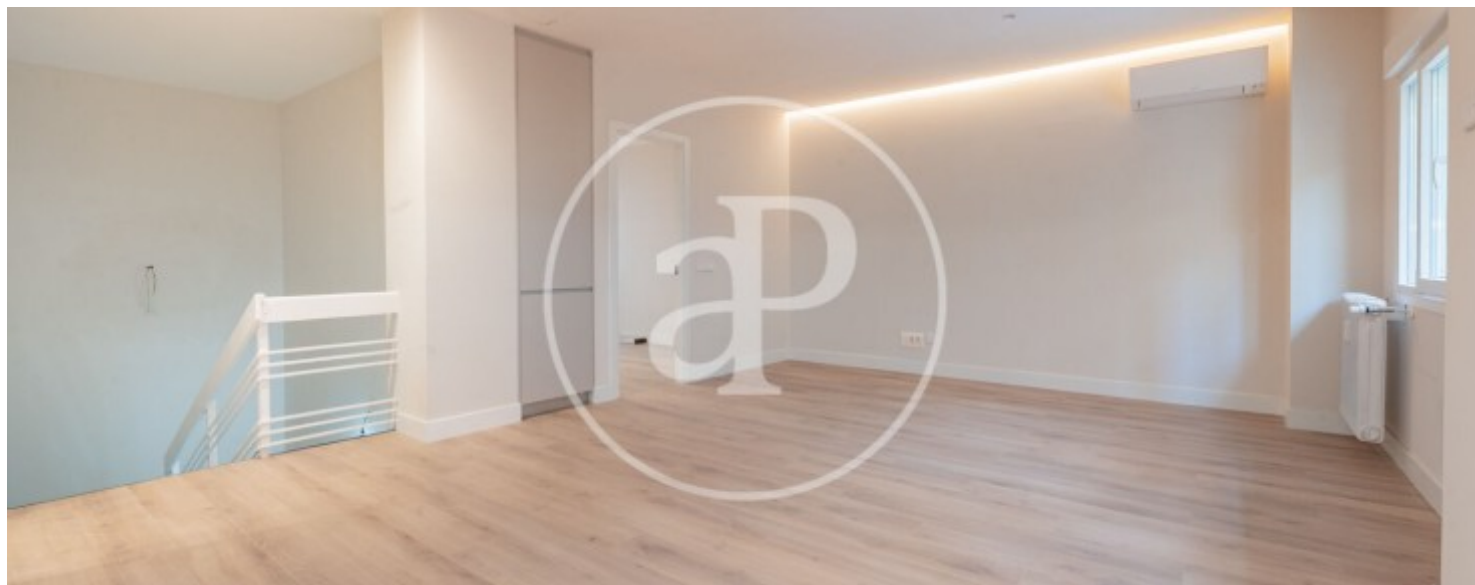
Pacífico, Madrid

REF. VM2511034



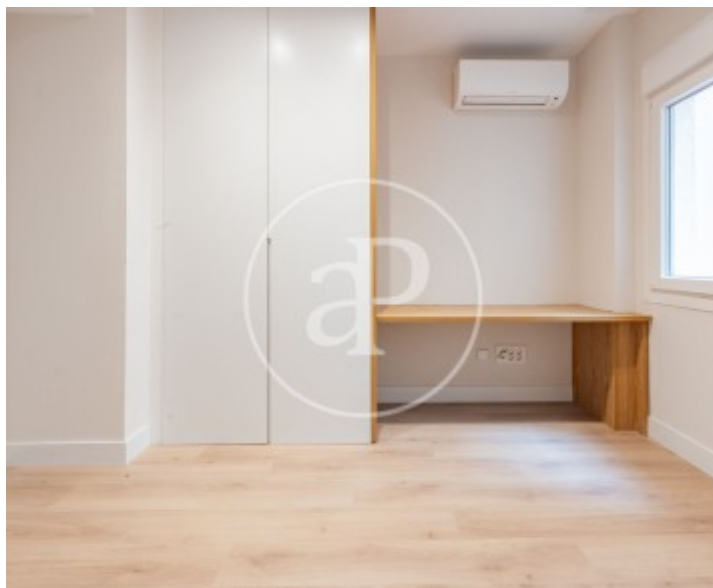
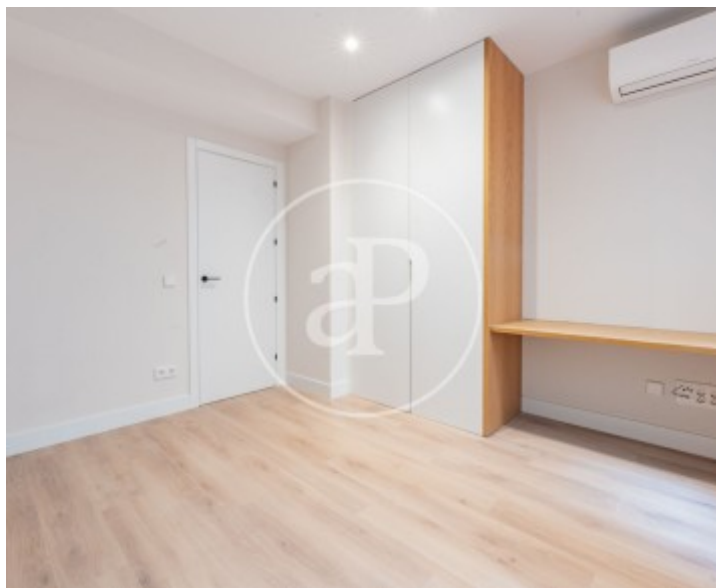
Pacífico, Madrid

REF. VM2511034



Pacífico, Madrid

REF. VM2511034



The information about any property is not binding to any offer or contract. Any verbal or written declaration made by aProperties with regards to the value or condition of the property should not be considered accurate or factual. The pictures make reference to some parts of the property at the times that they were taken. The areas, dimensions and distances that are given are approximate and should be checked by the client. The images are computer generated and are just an approximate indication of the real appearance of the property; these may change at any time. The information with regards to the property may also change at any time.

For **more information** or
to make an appointment

apropertiesmadrid@aproperties.es
Tel: 91 800 54 65
www.aproperties.es