

(Nuevos Ministerios - Ríos Rosas)

Ref: ONM2604004



Spectacular Penthouse in the heart of Chamberí

We present this unique large-scale penthouse, the result of merging the top two units of the building, designed for those seeking space, privacy, and a truly distinctive residential experience in a prime location. Located in a fully refurbished classic building, it combines the architectural value of its protected façade with high-end contemporary interiors. A unique product on the market, with the possibility of bespoke customization according to the buyer's needs. The home is organized around a large open-plan main space where the kitchen is integrated with the living and dining area, creating a continuous, elegant, and functional environment. Large windows connect to the terrace, turning it into a natural extension of the interior and offering open views over the city. The layout includes 3 en-suite bedrooms with dressing areas, designed to maximize comfort, organization, and quality of life in everyday living. The interiors feature noble materials such as oak flooring, fully fitted kitchens with high-end appliances, and premium bathroom finishes, in line with the positioning of the project. From a technical perspective, the building incorporates advanced [...]

Madrid / Nuevos Ministerios - Ríos Rosas
Unit 6 A
Completion Q3 2026

FEATURES

Surface 238 m² / 28 m² terrace
3 Rooms
3 Toilets 1 Restrooms

- ✓ Views
- ✓ Heating
- ✓ Boxroom
- ✓ AACC
- ✓ Terrace
- ✓ Backyard
- ✓ Pool
- ✓ Gym
- ✓ Lift
- ✓ Security
- ✓ Concierge
- ✓ Has parking

Price 3,950,000 €

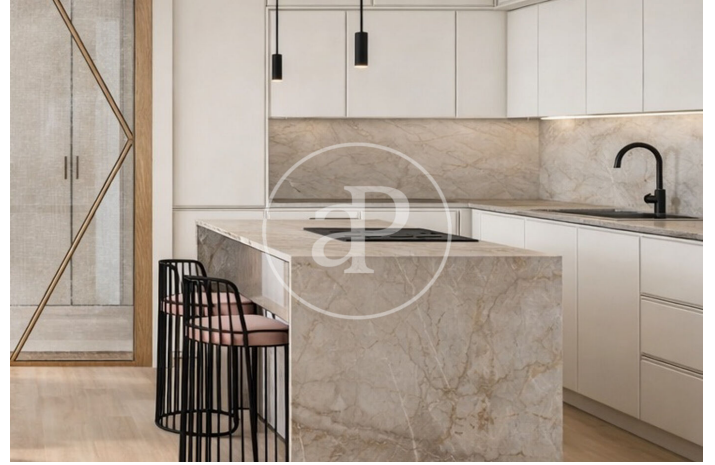
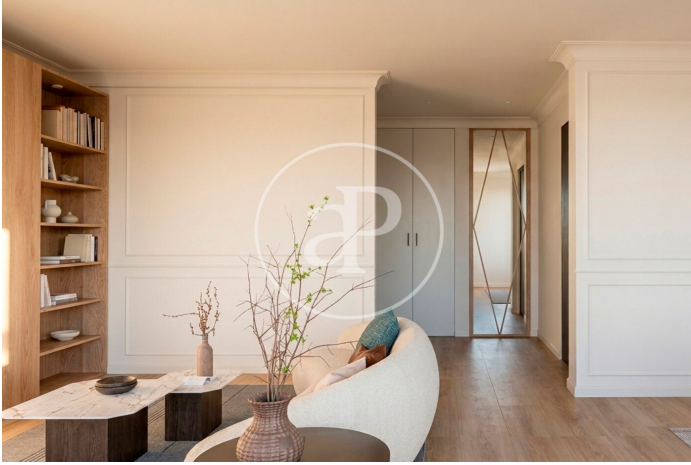
(Nuevos Ministerios - Ríos Rosas)

Ref: ONM2604004



(Nuevos Ministerios - Ríos Rosas)

Ref: ONM2604004



(Nuevos Ministerios - Ríos Rosas)

Ref: ONM2604004



The information about any property is not binding to any offer or contract. Any verbal or written declaration made by aProperties with regards to the value or condition of the property should not be considered accurate or factual. The pictures make reference to some parts of the property at the times that they were taken. The areas, dimensions and distances that are given are approximate and should be checked by the client. The images are computer generated and are just an approximate indication of the real appearance of the property; these may change at any time. The information with regards to the property may also change at any time.

Contact us today for more information or to arrange a viewing

Tel: 91 800 54 65 apropertiesmadrid@aproperties.es <https://www.aproperties.es>