

Nueva España, Madrid

REF. VM2402058



Flat for sale in Nueva España (Madrid)

Features

Surface

280 m²

Bedrooms

4

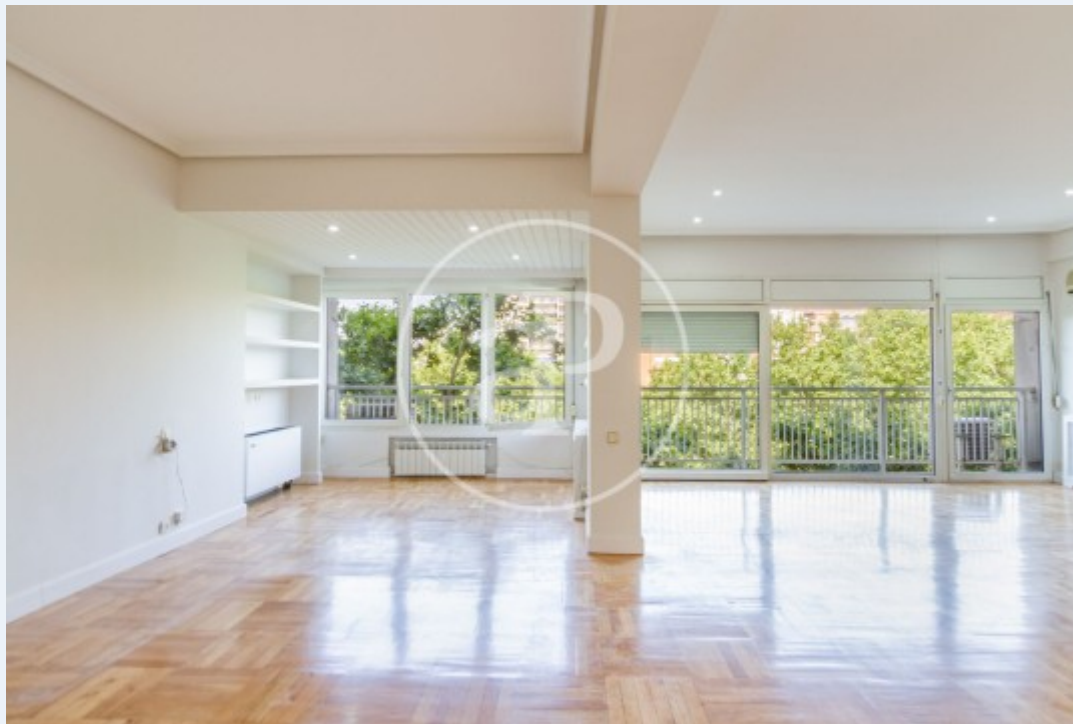
Bathrooms

3

✓ Has parking

Price

1,900,000 €



Apartment for sale very bright, upon entering the house there is a large entrance with closet gabanero.

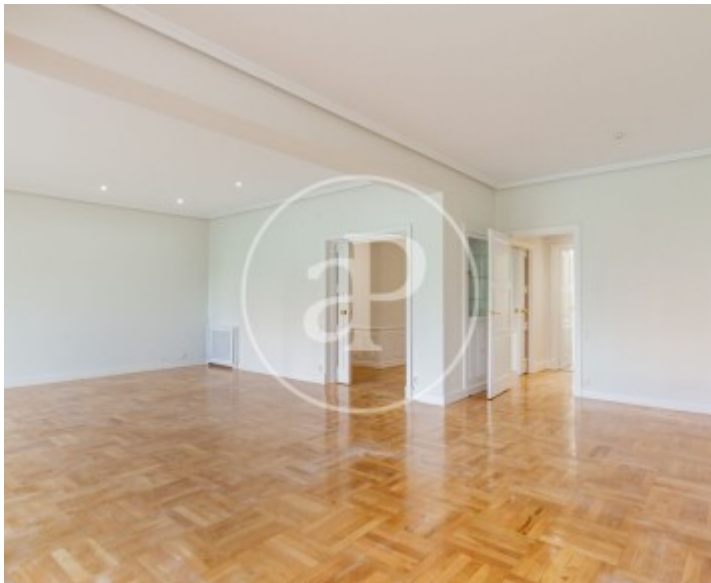
From this, there are three doors. The right hand one leads to the living area, we find a super spacious living room with floor to ceiling windows overlooking the groves of a park and makes the house very cozy. This area is separated by aesthetic shelves that give separation to the space to accommodate living room and living room separated from the dining room. Through another door we enter the hallway, connected to the other door of the hall. Through the hallway, wide access to the sleeping area. On one side are two good sized bedrooms with floor to ceiling closets

and large windows. One of these bedrooms has a very nice terrace facing west. Both bedrooms share a large bathroom, located at the end of the hallway. It is large with bathtub and bidet. Past this area of the bedrooms, in front is the master bedroom en suite. Passing the door there is a hallway with floor to ceiling closets and a large window overlooking the park, this makes the room very pleasant. The bathroom has a bathtub and shower with bidet, two sinks and several shelves with great storage. In the hallway there are linen closets. The kitchen is on the left side of the entrance, it is...

Contact us,
we will be happy to assist you,
to offer you more details and information.

Nueva España, Madrid

REF. VM2402058





APROPERTIES
REAL ESTATE

Calle Serrano 60
28001 Madrid
T. 91 800 54 65
www.aproperties.es

Nueva España, Madrid

REF. VM2402058



Nueva España, Madrid

REF. VM2402058



Nueva España, Madrid

REF. VM2402058



The information about any property is not binding to any offer or contract. Any verbal or written declaration made by aProperties with regards to the value or condition of the property should not be considered accurate or factual. The pictures make reference to some parts of the property at the times that they were taken. The areas, dimensions and distances that are given are approximate and should be checked by the client. The images are computer generated and are just an approximate indication of the real appearance of the property; these may change at any time. The information with regards to the property may also change at any time.



For **more information** or
to make an appointment

apropertiesmadrid@aproperties.es
Tel: 91 800 54 65
www.aproperties.es