

Nueva España, Madrid

REF. VM1710010

Luxurious duplex penthouse with private pool in Nueva España area

Features

- ✓ Views
- ✓ Heating
- ✓ Boxroom
- ✓ AACC
- ✓ Terrace
- ✓ Backyard
- ✓ Pool
- ✓ Lift
- ✓ Security
- ✓ Concierge
- ✓ Has parking

Surface

333 m²

Bedrooms

4

Bathrooms

4



Price

2,100,000 €

In one of the best areas of the neighborhood of Nueva España, we find this magnificent penthouse-duplex completely exterior and with four orientations.

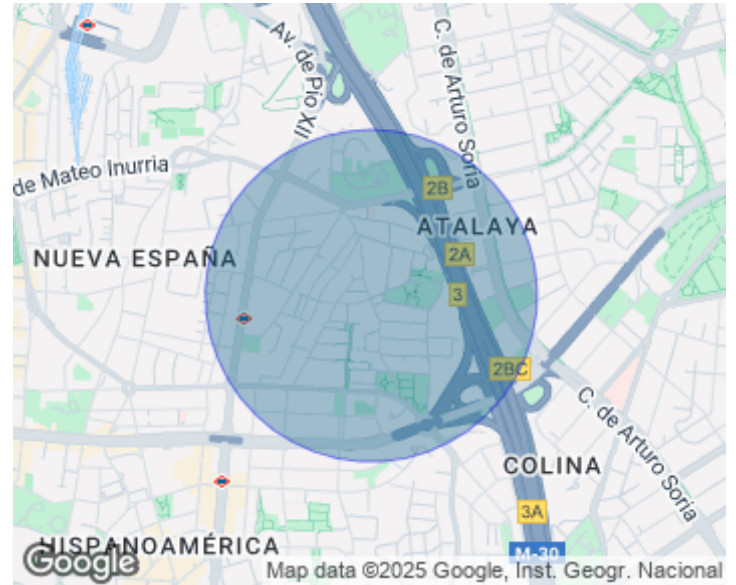
It has 250sqm and 245sqm of terrace with porch, garden and private pool. The penthouse is divided into two floors, both with direct access from the elevator and stairs, which are distributed as follows: on the ground floor, a distributor that gives access to two bedrooms en suite, one of them the master bedroom, which also has a dressing room and terrace. On the upper floor has another bedroom en suite and room service with bathroom. Also on this floor we find a large living room with fireplace in two heights,

dining room and a magnificent kitchen. From the living room, we access the porch where we go out to the wonderful terrace that covers the entire roof of the building, converted into a well-kept garden for more than twenty years, with trees over ten meters high and lots of vegetation. The terrace also has a sensational private pool and built-in barbecue. It should be noted that this spectacular home has a large storage room and two parking spaces included in the price that are in the same property, and an optional third in the building in front (not included in the price). The farm where it is...

Contact us,
we will be happy to assist you,
to offer you more details and information.

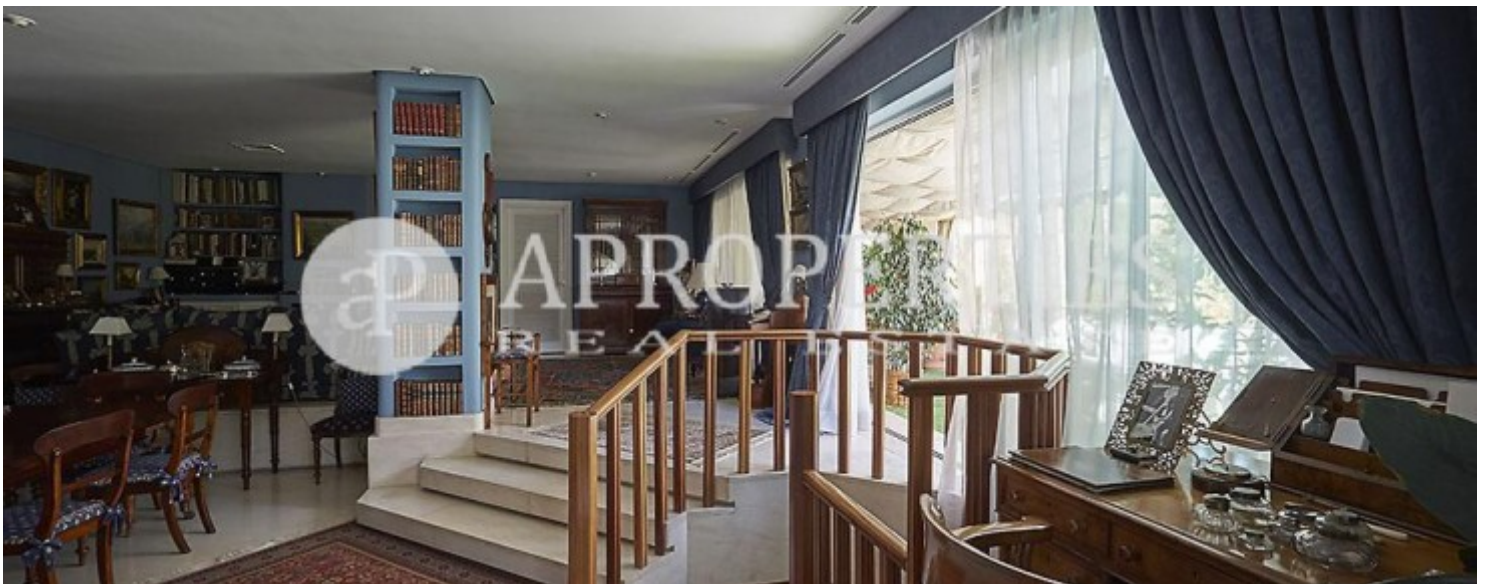
Nueva España, Madrid

REF. VM1710010



Nueva España, Madrid

REF. VM1710010



Nueva España, Madrid

REF. VM1710010



Nueva España, Madrid

REF. VM1710010



The information about any property is not binding to any offer or contract. Any verbal or written declaration made by aProperties with regards to the value or condition of the property should not be considered accurate or factual. The pictures make reference to some parts of the property at the times that they were taken. The areas, dimensions and distances that are given are approximate and should be checked by the client. The images are computer generated and are just an approximate indication of the real appearance of the property; these may change at any time. The information with regards to the property may also change at any time.

For **more information** or
to make an appointment

apropertiesmadrid@aproperties.es
Tel: 91 800 54 65
www.aproperties.es