



Malasaña - Universidad, Madrid

REF. VM2511024

Apartment for sale on Palma street

Features

- ✓ Heating
- ✓ AACC
- ✓ Lift

Price

740,000 €

Surface

111 m²

Bedrooms

2

Bathroom

1



Bright and inviting 111 m² (1,250 sq ft) apartment, located on the second floor with elevator access, on one of the most desirable streets in the Conde Duque neighborhood.

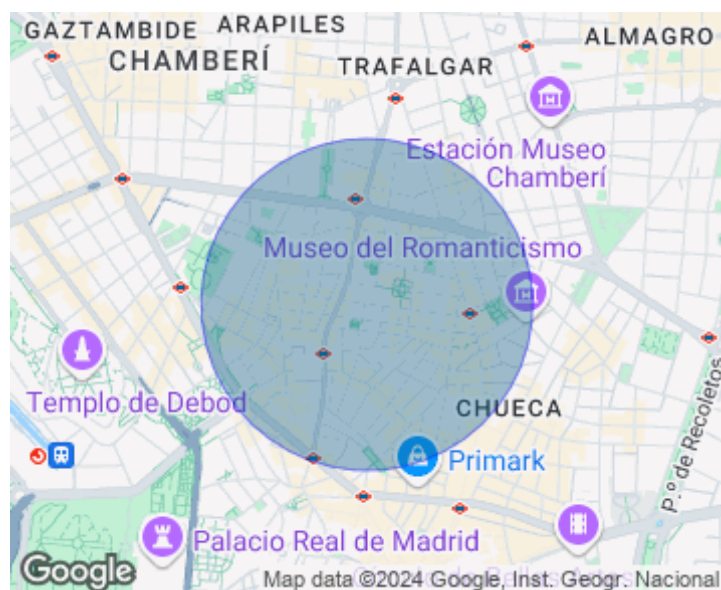
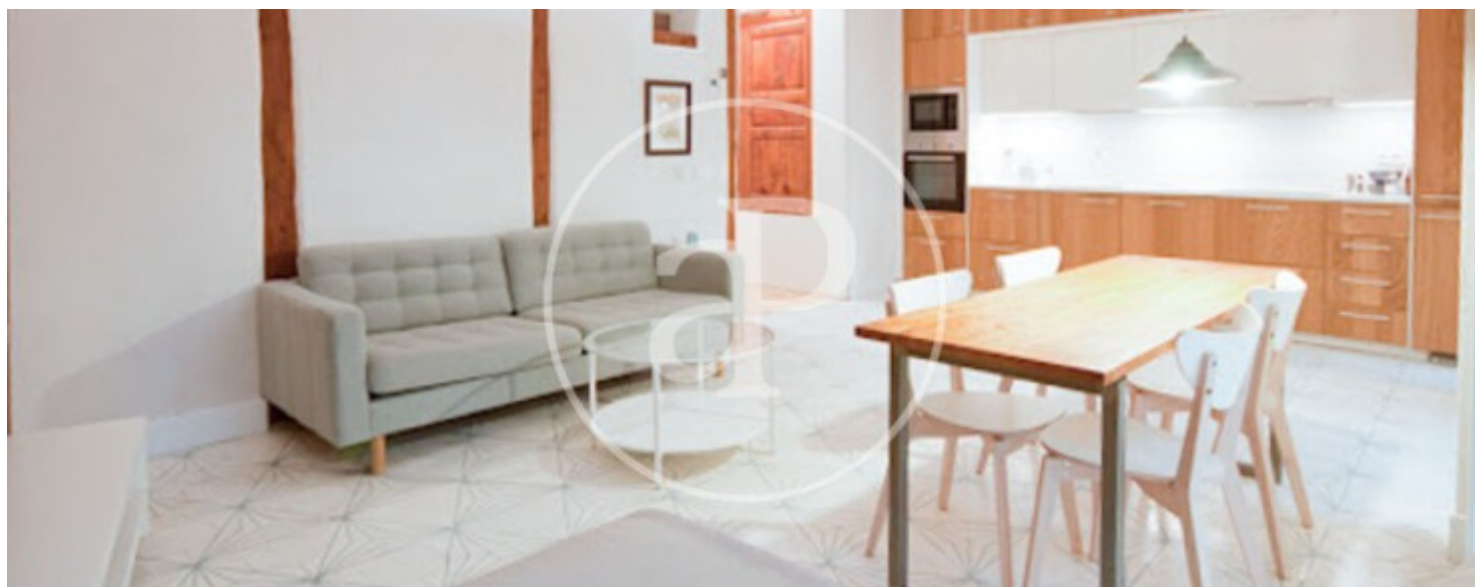
This home exudes character and warmth, combining traditional elements with contemporary details to create a unique ambiance in the heart of Madrid. The apartment features a spacious living-dining room with exposed wooden beams, a space brimming with personality and charm, and large windows that flood the entire room with natural light. The fully equipped kitchen can be separated by a sliding wooden door, offering flexibility between the social and private areas. It has two exterior bedrooms

with balconies and built-in wardrobes, as well as a full bathroom accessible from both the living room and the bedrooms, allowing for flexible partitioning with sliding doors as needed. The apartment has individual natural gas heating and air conditioning, ensuring year-round comfort. The building is in excellent condition and has an elevator. About the Conde Duque Neighborhood Located in the University district, the Conde Duque neighborhood is one of Madrid's most vibrant and charming areas. With its unique character, it combines the tranquil atmosphere of its residential streets with a...

Contact us,
we will be happy to assist you,
to offer you more details and information.

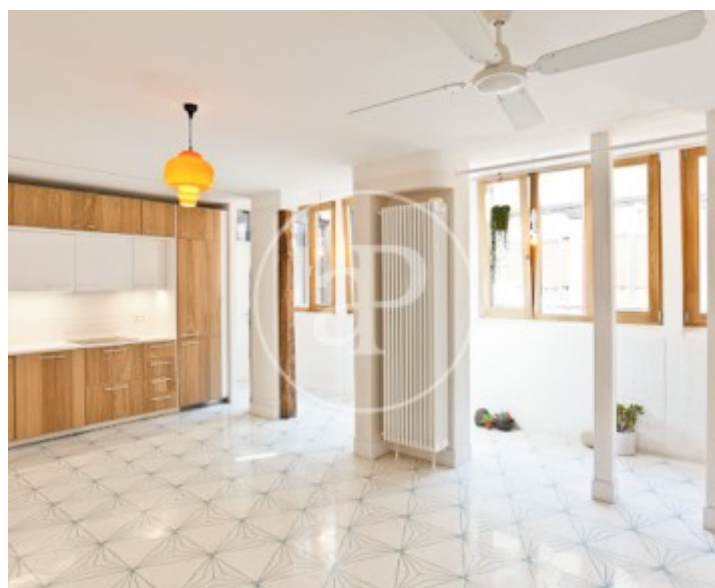
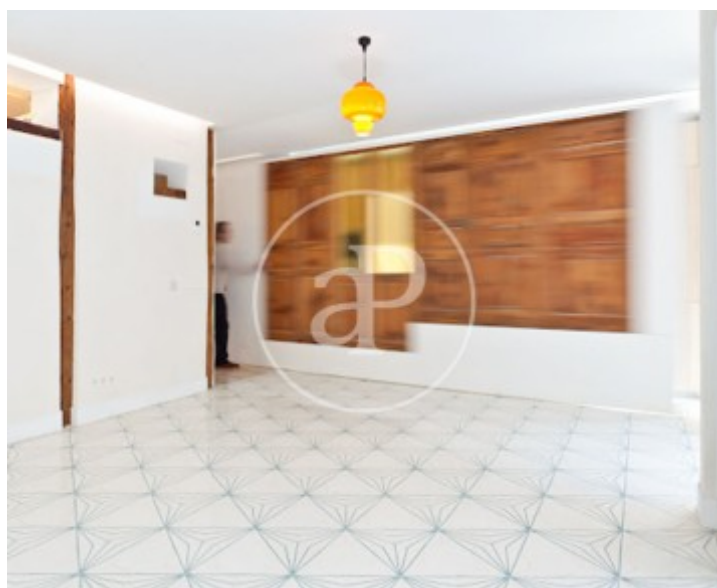
Malasaña - Universidad, Madrid

REF. VM2511024



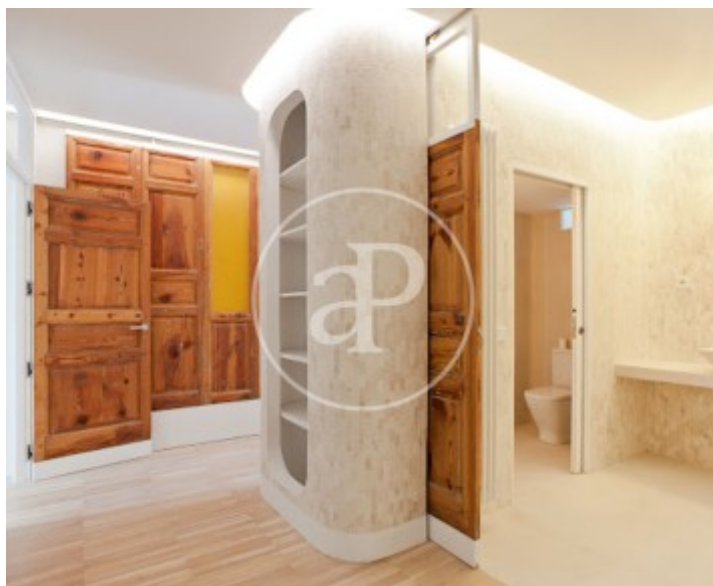
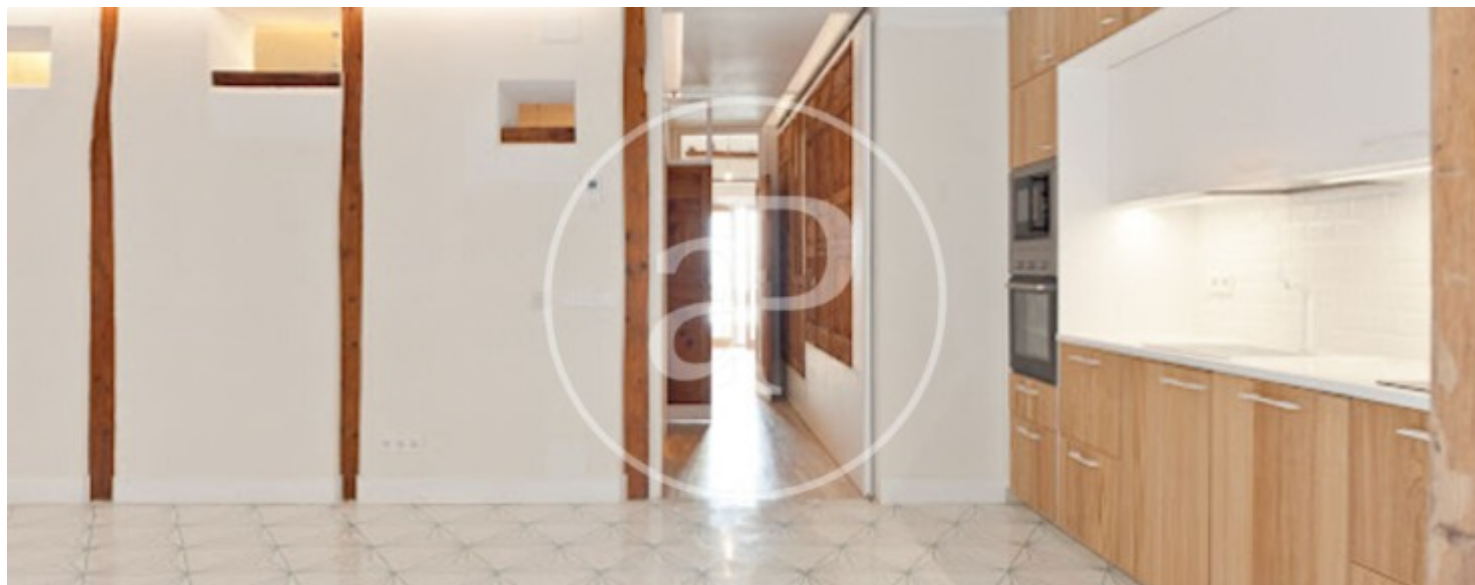
Malasaña - Universidad, Madrid

REF. VM2511024



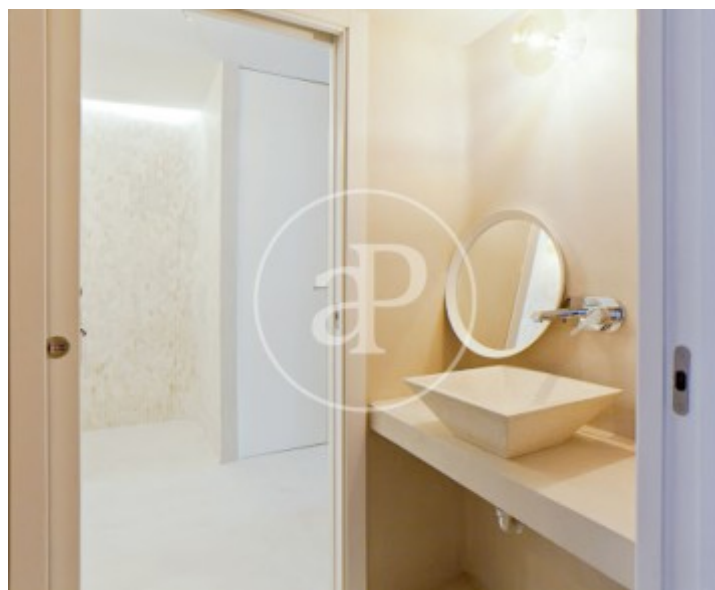
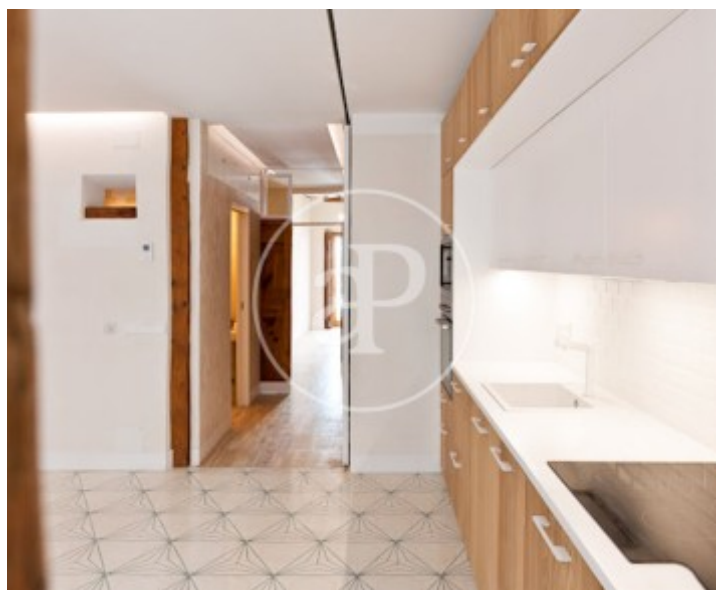
Malasaña - Universidad, Madrid

REF. VM2511024



Malasaña - Universidad, Madrid

REF. VM2511024



The information about any property is not binding to any offer or contract. Any verbal or written declaration made by aProperties with regards to the value or condition of the property should not be considered accurate or factual. The pictures make reference to some parts of the property at the times that they were taken. The areas, dimensions and distances that are given are approximate and should be checked by the client. The images are computer generated and are just an approximate indication of the real appearance of the property; these may change at any time. The information with regards to the property may also change at any time.

For **more information** or
to make an appointment

apropertiesmadrid@aproperties.es
Tel: 91 800 54 65
www.aproperties.es