



Lista, Madrid

REF. AM2601039

Flat for rent in Lista (Madrid)

Features

- ✓ Views
- ✓ Furnished
- ✓ Terrace
- ✓ Concierge
- ✓ Heating
- ✓ AACC
- ✓ Lift

Surface

72 m²

Bedroom

1

Bathroom

1

Price

1,950 €



Completely exterior 72 m² penthouse located on Conde de Peñalver Street, in the heart of the Lista district, one of Madrid's most sought-after areas.

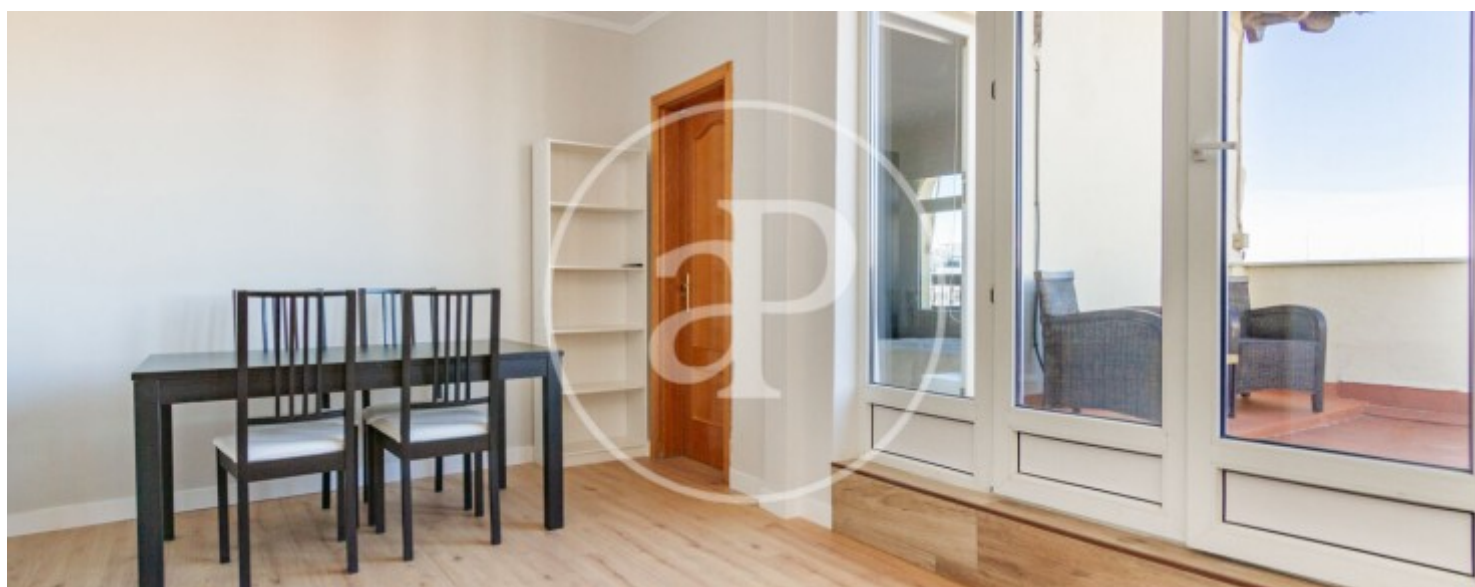
Living here means enjoying an excellent environment with a wide range of gastronomic, cultural, and leisure options. The apartment stands out for its magnificent west-facing terrace, a true privilege in the Salamanca district. From here, you can enjoy sweeping, unobstructed views over the city of Madrid and spectacular sunsets, making it an ideal space to relax, dine al fresco, or simply enjoy a unique setting. The interior features a spacious living room filled with natural light, thanks to its large

windows that open directly onto the terrace. The space includes a large sofa area, a dining area, and a constant feeling of spaciousness and continuity with the outdoors. The bedroom, with a double bed with storage underneath and large built-in wardrobes, also has direct access to the terrace, reinforcing the idea of a bright and tranquil home. The apartment also features a separate kitchen, fully equipped with all appliances, and a spacious and comfortable bathroom. This penthouse is ideal for a single person or a couple who appreciate the location, natural light, privacy, and the...

Contact us,
we will be happy to assist you,
to offer you more details and information.

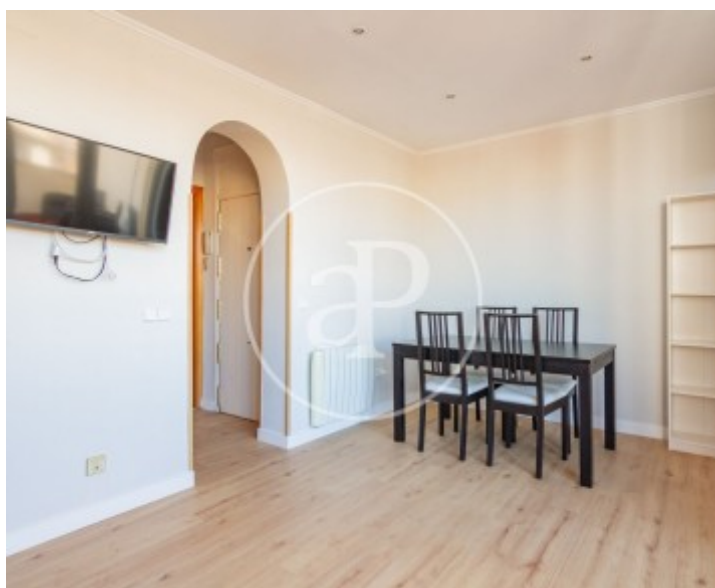
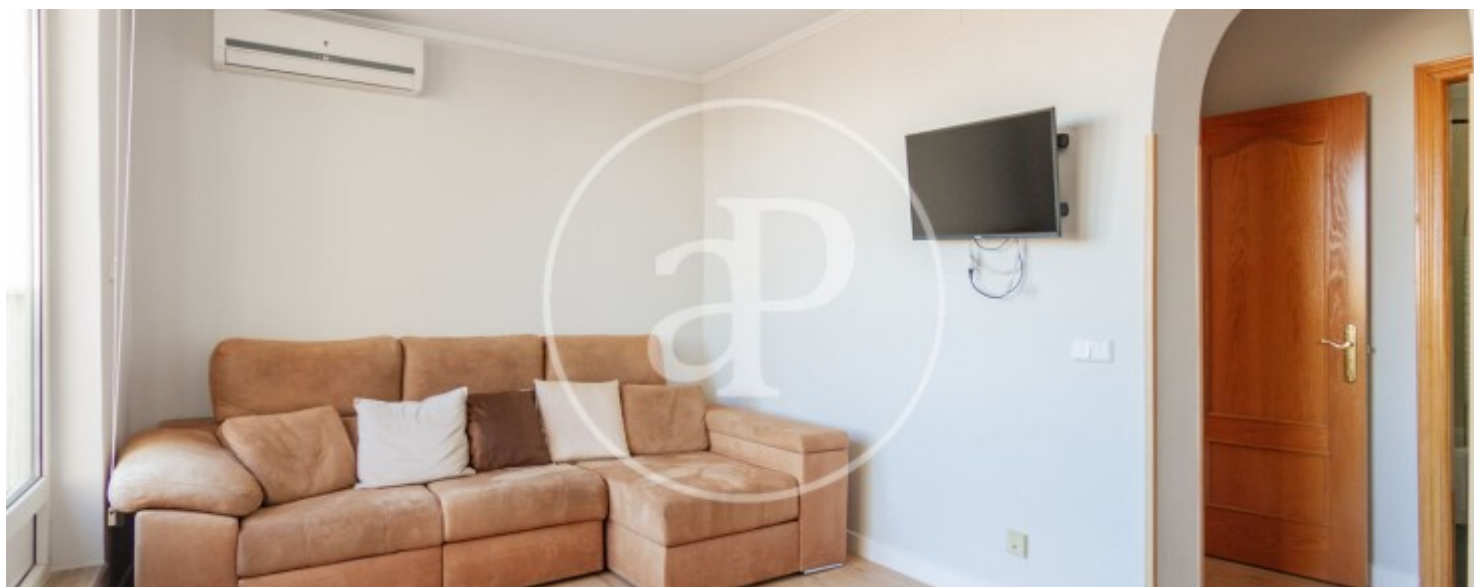
Lista, Madrid

REF. AM2601039



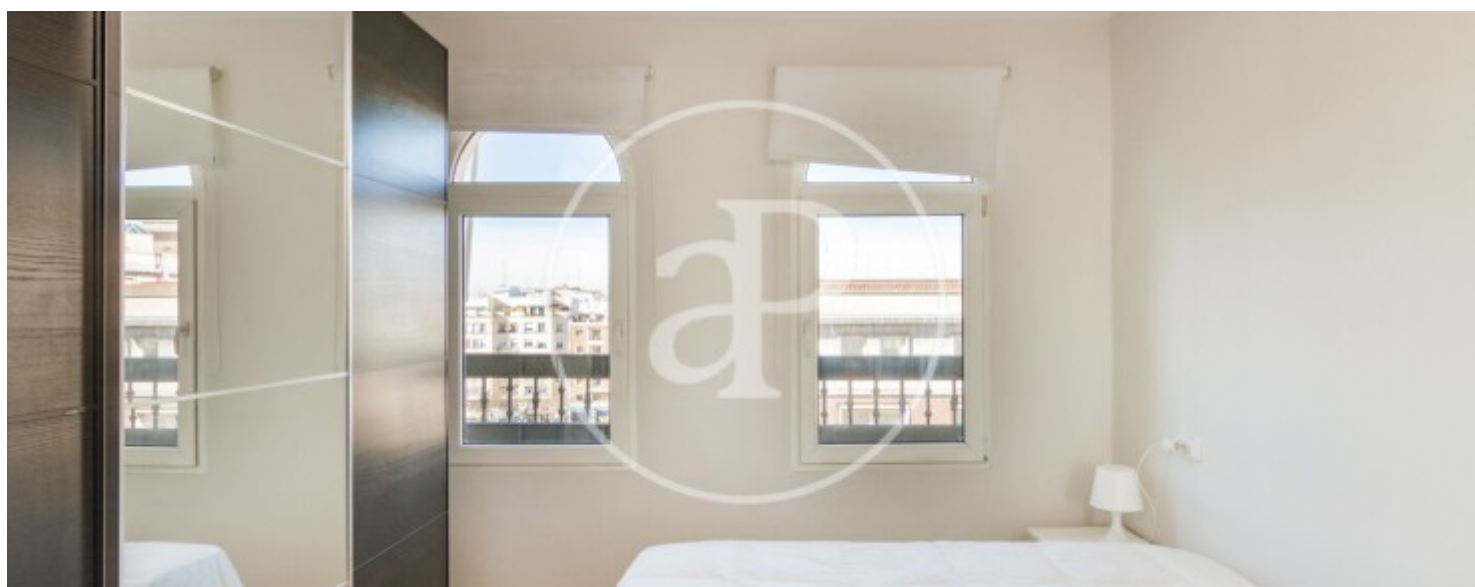
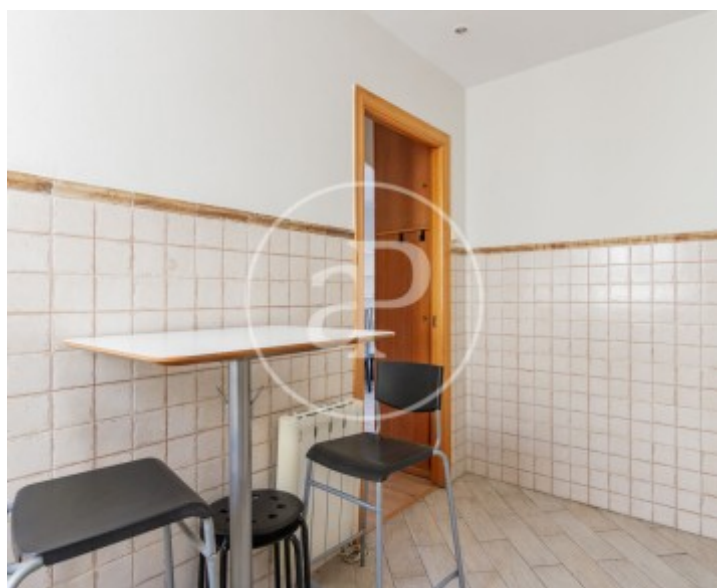
Lista, Madrid

REF. AM2601039



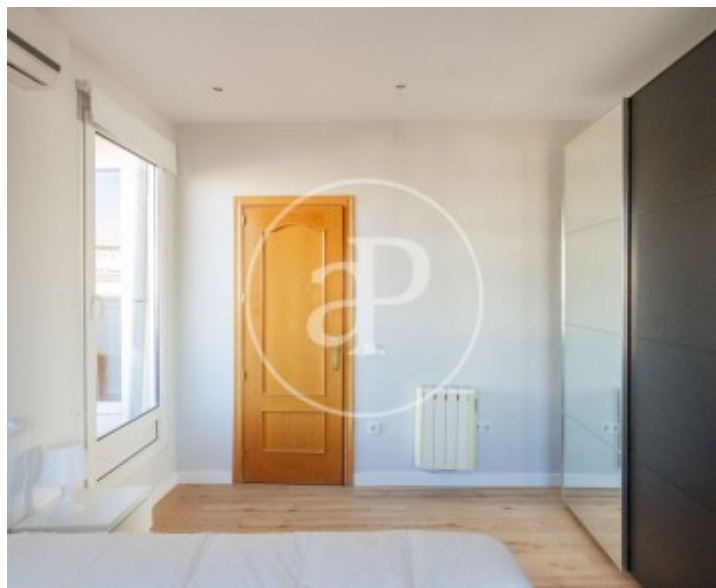
Lista, Madrid

REF. AM2601039



Lista, Madrid

REF. AM2601039



The information about any property is not binding to any offer or contract. Any verbal or written declaration made by aProperties with regards to the value or condition of the property should not be considered accurate or factual. The pictures make reference to some parts of the property at the times that they were taken. The areas, dimensions and distances that are given are approximate and should be checked by the client. The images are computer generated and are just an approximate indication of the real appearance of the property; these may change at any time. The information with regards to the property may also change at any time.

For **more information** or
to make an appointment

apropertiesmadrid@aproperties.es
Tel: 91 800 54 65
www.aproperties.es