

Lista, Madrid

REF. VM2507009

Apartment for sale in Conde Peñalver

Features

- ✓ Heating
- ✓ Boxroom
- ✓ Terrace
- ✓ Concierge
- ✓ Furnished
- ✓ AACC
- ✓ Lift

Surface

160 m²

Bedrooms

3

Bathrooms

3

Price

1,800,000 €



Located on the second floor of a beautiful building with a classic facade, in the prestigious neighborhood of Salamanca, Lista district, we find this great house of 160m2 according to cadastre.

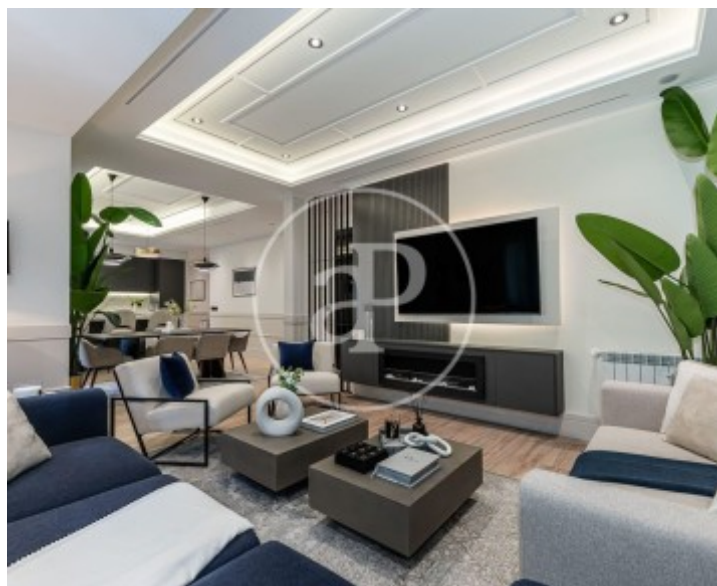
The property consists of three double bedrooms, two of them with en suite bathroom, plus another bathroom, in total three bathrooms. Spacious living room with dining area and a beautiful integrated kitchen with high-end appliances. The area is complemented by a charming terrace. This property is currently being renovated with high quality materials. The price includes the complete renovation and interior design, with exquisite design and luxury finishes, as seen in the

photographs belonging to another property of similar characteristics in terms of finishes and furniture. Lista is one of the six neighborhoods that make up the famous Salamanca District of Madrid. It is bounded by the streets Don Ramón de la Cruz, Príncipe de Vergara, María de Molina and Francisco Silvela. Its nerve center is the Plaza del Marqués de Salamanca in the famous Ortega y Gasset street better known as the Golden Mile of Madrid. It belongs to the most exclusive residential areas of the capital, offering an unsurpassable quality of life for its security...

Contact us,
we will be happy to assist you,
to offer you more details and information.

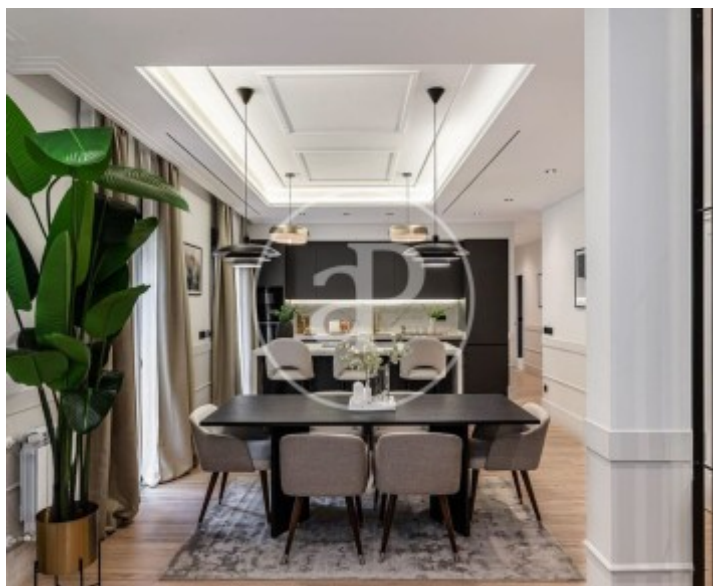
Lista, Madrid

REF. VM2507009



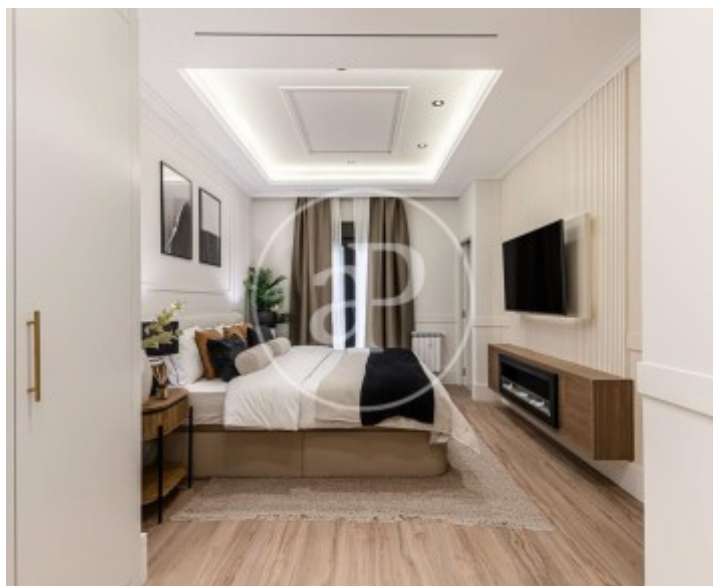
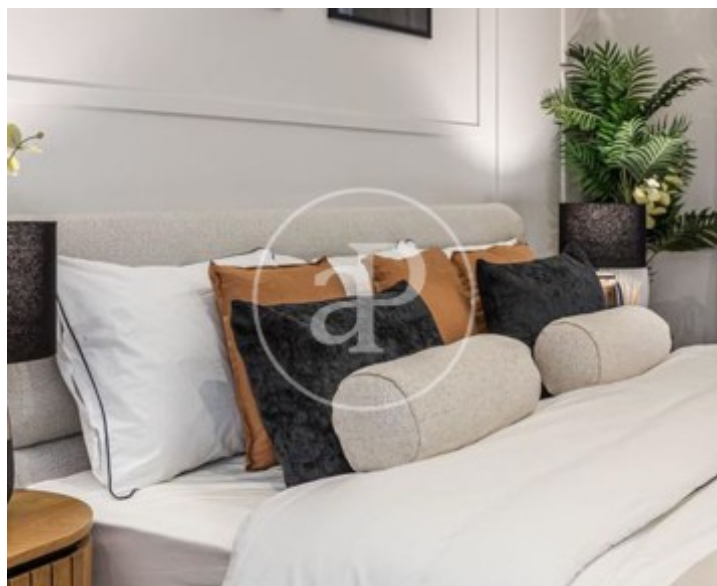
Lista, Madrid

REF. VM2507009



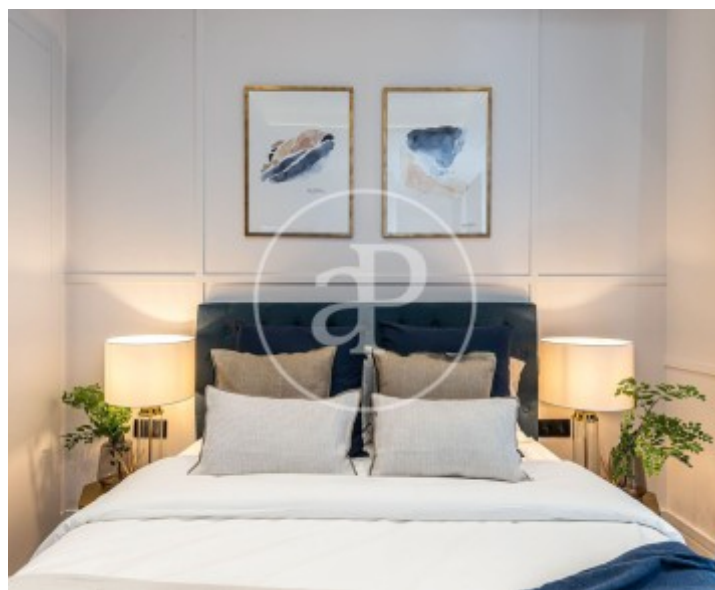
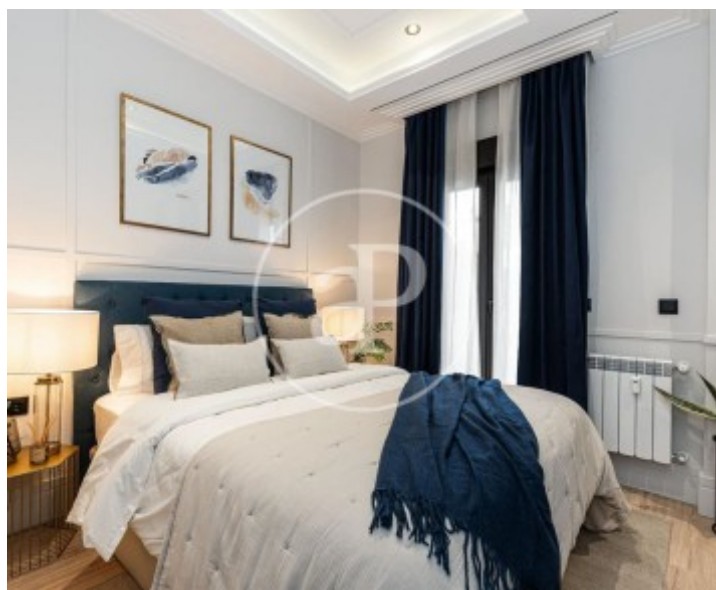
Lista, Madrid

REF. VM2507009



Lista, Madrid

REF. VM2507009



The information about any property is not binding to any offer or contract. Any verbal or written declaration made by aProperties with regards to the value or condition of the property should not be considered accurate or factual. The pictures make reference to some parts of the property at the times that they were taken. The areas, dimensions and distances that are given are approximate and should be checked by the client. The images are computer generated and are just an approximate indication of the real appearance of the property; these may change at any time. The information with regards to the property may also change at any time.

For **more information** or
to make an appointment

apropertiesmadrid@aproperties.es
Tel: 91 800 54 65
www.aproperties.es