

Lavapiés - Embajadores, Madrid

REF. VM2509078

Apartment for sale in Antón Martín

Features

- ✓ Heating
- ✓ AACC
- ✓ Lift
- ✓ Furnished
- ✓ Terrace
- ✓ Concierge

Surface

42 m²

Bedrooms

2

Bathroom

1

Price

355,000 €



Ground floor exterior apartment with separate entrance for sale, located in one of Madrid's most dynamic and promising areas.

Its strategic location, just a few minutes from Atocha and Antón Martín, guarantees high demand for both residential and tourist rentals. The property has a floor area of 43 m² and a usable area of 39 m². It has two bedrooms, a full bathroom, kitchen, private patio, and built-in wardrobes. The building has an elevator and concierge. It has individual electric heating. It is a second-hand property in good condition with direct access from the street. The return on investment has been between 10% and 20% over the last 3

years. About the area: Calle San Cosme y San Damián, located between Lavapiés, Antón Martín, and Atocha, is in the heart of Madrid, in one of the capital's most culturally and socially vibrant areas. It is a historic and cosmopolitan area that combines tradition with modernity, with high demand for both national and international rentals. The area offers a wide variety of services such as supermarkets, health centers, schools, theaters, cinemas, museums (Reina Sofía, Prado, Thyssen), as well as a wide range of dining and leisure options. Transport links...

Contact us,
we will be happy to assist you,
to offer you more details and information.

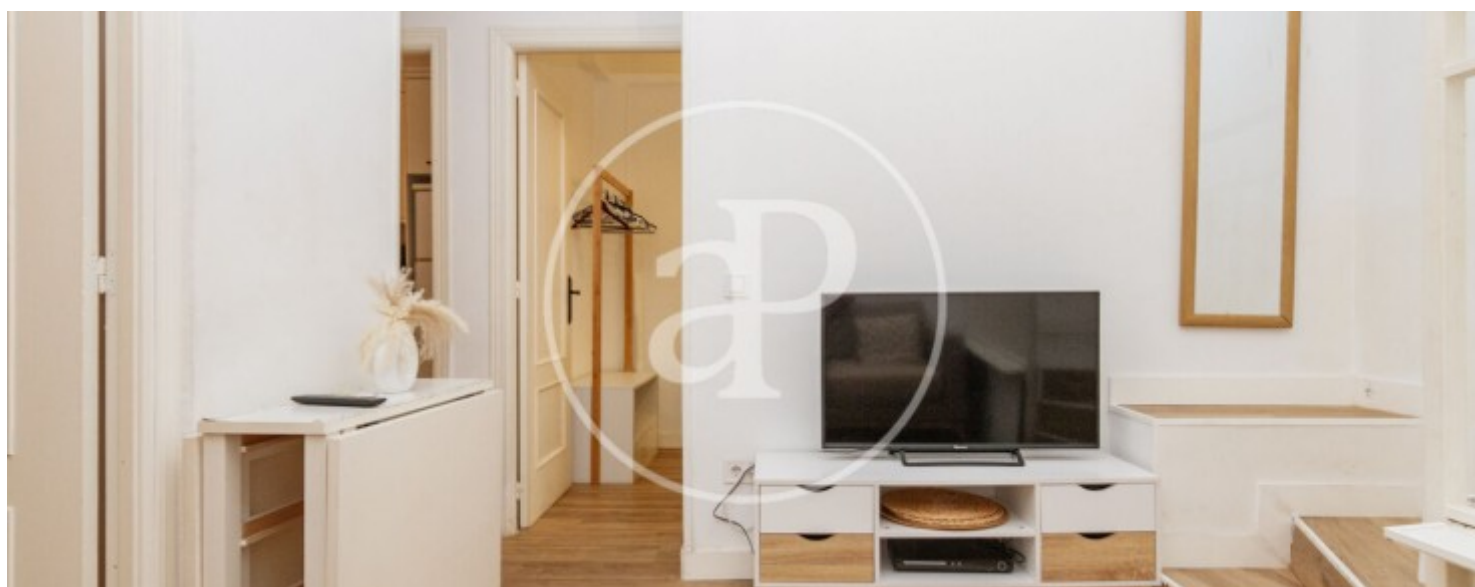
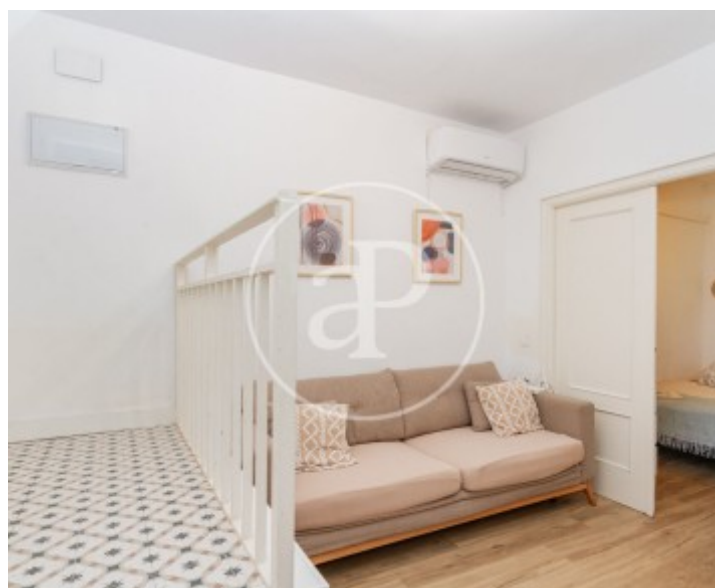
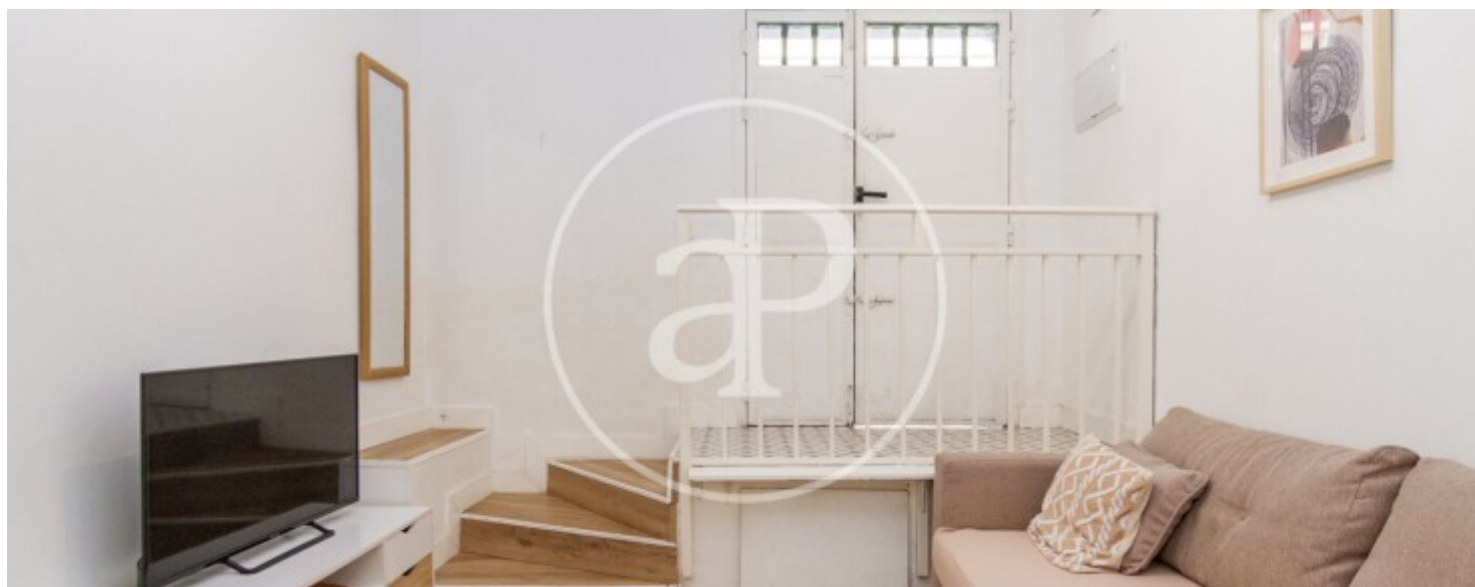
Lavapiés - Embajadores, Madrid

REF. VM2509078



Lavapiés - Embajadores, Madrid

REF. VM2509078



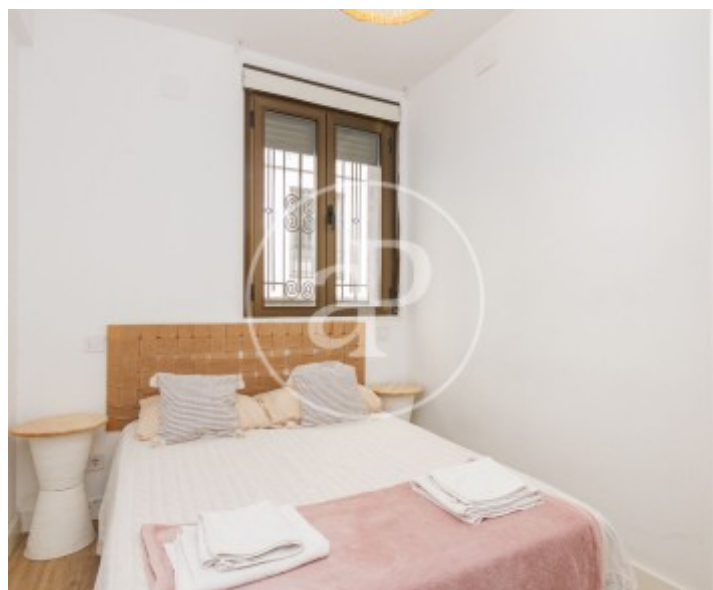
Lavapiés - Embajadores, Madrid

REF. VM2509078



Lavapiés - Embajadores, Madrid

REF. VM2509078



The information about any property is not binding to any offer or contract. Any verbal or written declaration made by aProperties with regards to the value or condition of the property should not be considered accurate or factual. The pictures make reference to some parts of the property at the times that they were taken. The areas, dimensions and distances that are given are approximate and should be checked by the client. The images are computer generated and are just an approximate indication of the real appearance of the property; these may change at any time. The information with regards to the property may also change at any time.

For **more information** or
to make an appointment

apropertiesmadrid@aproperties.es
Tel: 91 800 54 65
www.aproperties.es