



Imperial, Madrid

REF. VM2511074

Apartment for sale in Imperial

Features

- ✓ Views
- ✓ Boxroom
- ✓ Terrace
- ✓ Pool
- ✓ Security
- ✓ Has parking
- ✓ Heating
- ✓ AACC
- ✓ Backyard
- ✓ Lift
- ✓ Concierge

Surface

119 m²

Bedrooms

4

Bathrooms

2



Price

985,000 €

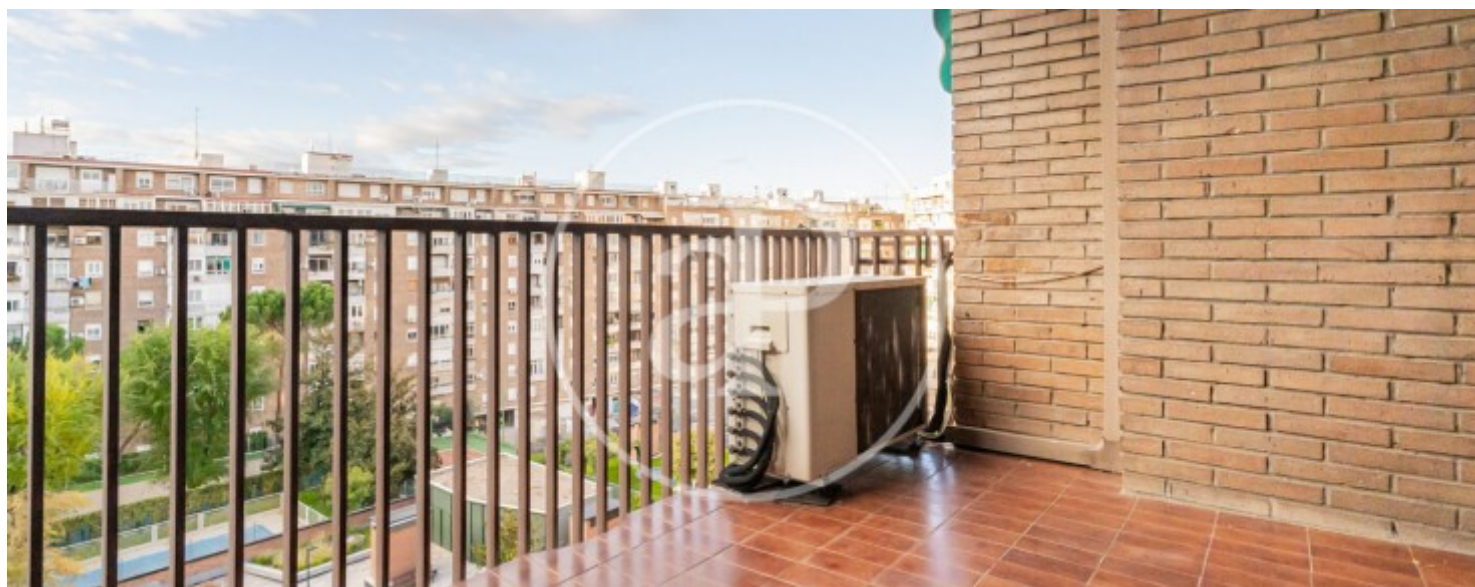
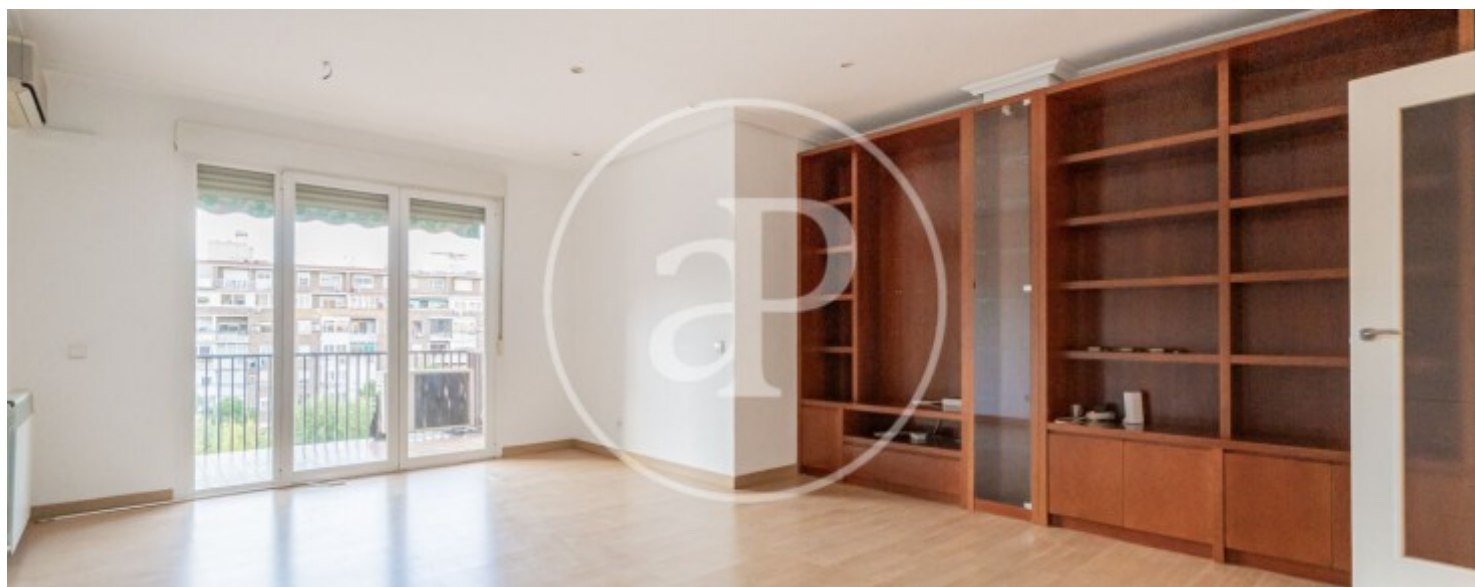
Opportunity to purchase an apartment with an open terrace in a luxury residential complex with all the modern amenities, including a concierge, swimming pool, storage room, and parking in the same building, providing great convenience and quality of life. It is located on the fourth floor, an excellent height, and in an area surrounded by trees and parks. The building was constructed in 1979. The property is distributed as follows from the main entrance: there is a hallway followed by a spacious living room with a door leading to an open-air terrace with spectacular views of the residential complex. Then, from the main entrance on the right-hand side, there is a hallway connecting to four double bedrooms with fitted wardrobes and a fully independent kitchen, as well as two bathrooms, one of which

is en suite. This area is close to the district's most important tourist attractions: Puerta de Toledo, Puente de Segovia, Puente de Toledo, and the Manzanares River. After the M-30 motorway was buried underground, the Madrid Río park was built, with spectacular green areas. Can you imagine living here?

Contact us,
we will be happy to assist you,
to offer you more details and information.

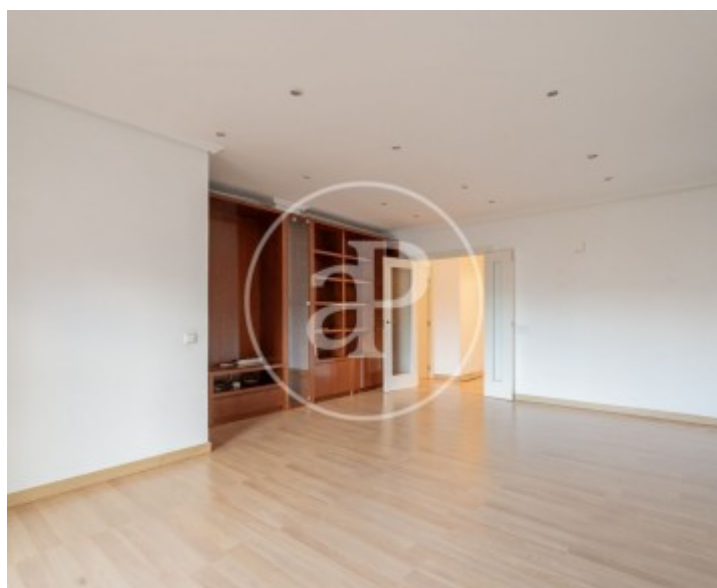
Imperial, Madrid

REF. VM2511074



Imperial, Madrid

REF. VM2511074



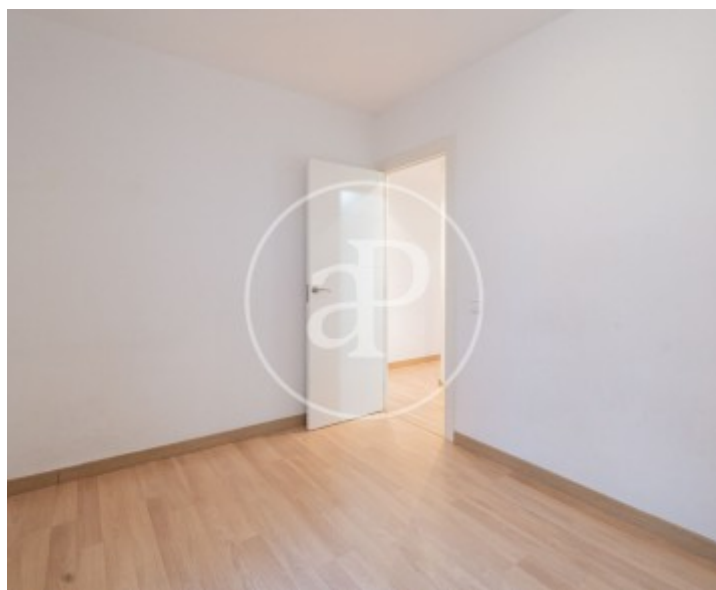
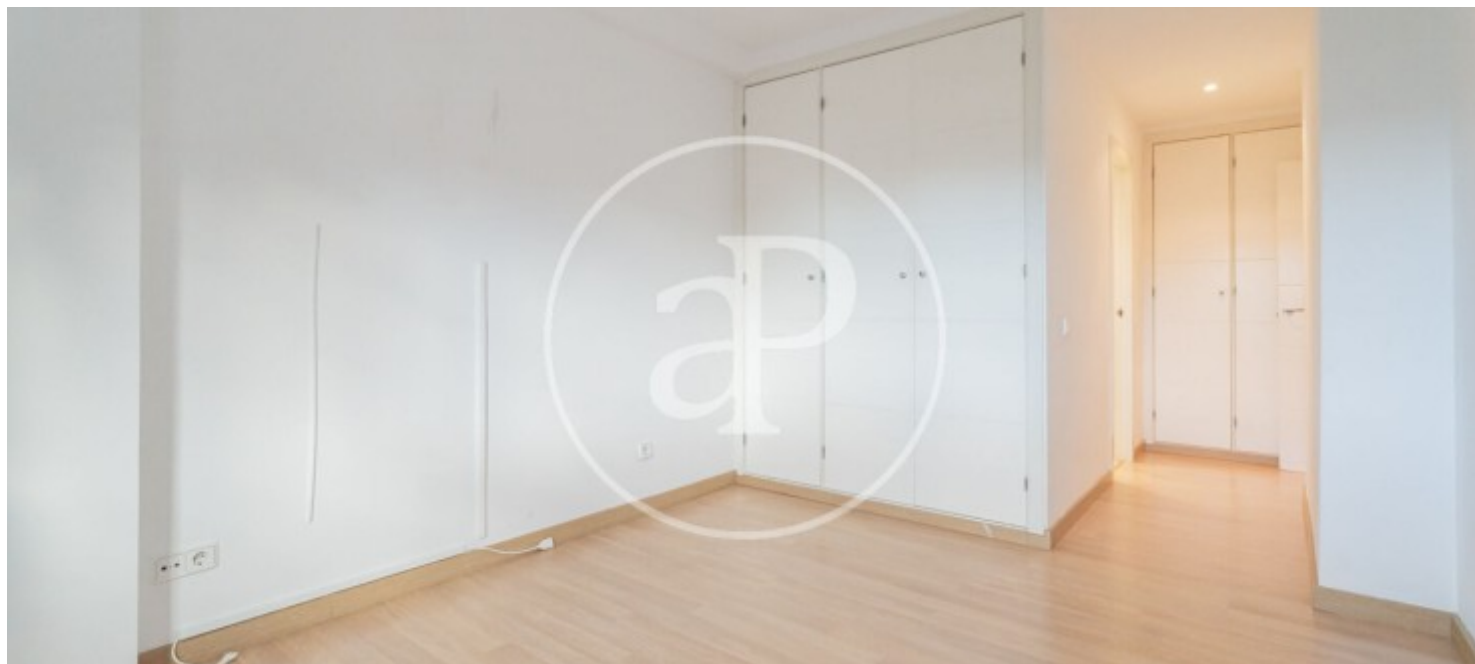
Imperial, Madrid

REF. VM2511074



Imperial, Madrid

REF. VM2511074



The information about any property is not binding to any offer or contract. Any verbal or written declaration made by aProperties with regards to the value or condition of the property should not be considered accurate or factual. The pictures make reference to some parts of the property at the times that they were taken. The areas, dimensions and distances that are given are approximate and should be checked by the client. The images are computer generated and are just an approximate indication of the real appearance of the property; these may change at any time. The information with regards to the property may also change at any time.

For **more information** or
to make an appointment

apropertiesmadrid@aproperties.es
Tel: 91 800 54 65
www.aproperties.es