

Ibiza, Madrid

REF. VM2510089

# Apartment for sale in Ibiza

## Features

- ✓ Views
- ✓ Heating
- ✓ Furnished
- ✓ AACC
- ✓ Lift

Price  
**929,000 €**

Surface  
**72 m<sup>2</sup>**

Bedrooms  
**2**

Bathrooms  
**2**



**Exclusive fifth-floor apartment located in one of Madrid's most sought-after areas: the Ibiza neighborhood, within the prestigious Retiro district.**

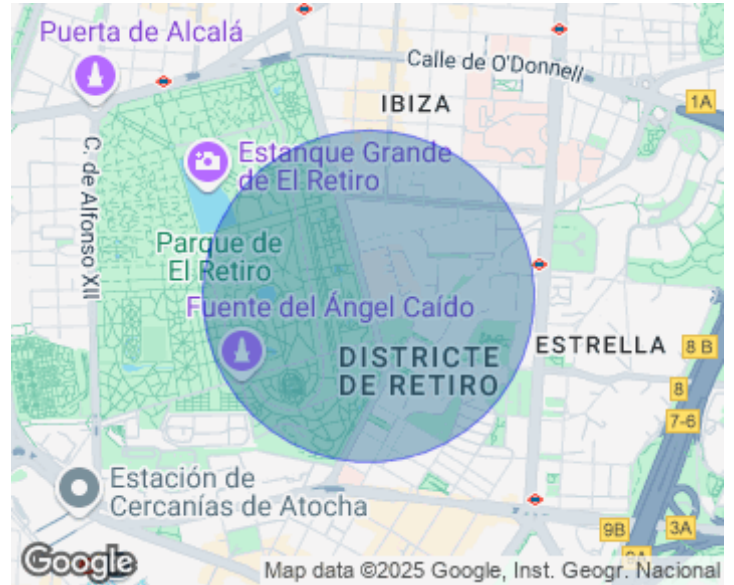
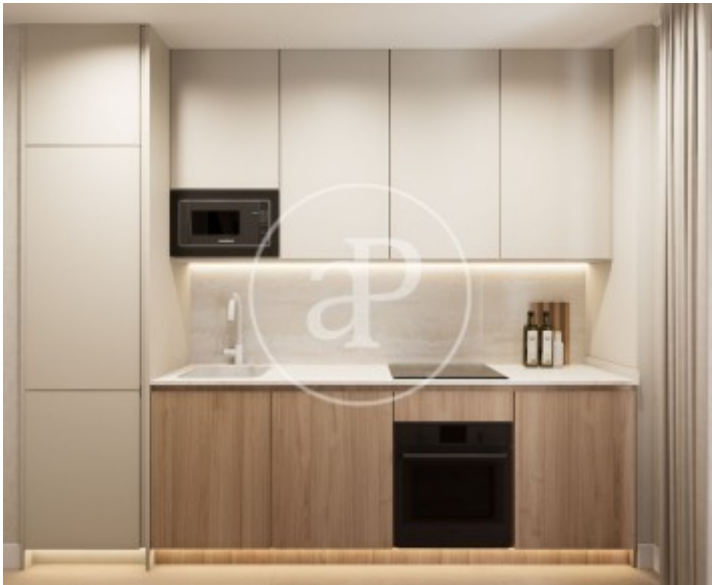
Facing Retiro Park, this property perfectly combines contemporary design with urban comfort, offering a sophisticated and functional lifestyle. With a surface area of 72 m<sup>2</sup>, this apartment has been carefully designed to make the most of natural light and open spaces. The result is an elegant, modern, and welcoming atmosphere, ideal for both a primary residence and an investment. Main features 2 double bedrooms with built-in wardrobes 2 full bathrooms with high-end finishes Open-plan, fully equipped kitchen with

premium appliances Central heating and ducted air conditioning Outside apartment on the 5th floor with elevator Building with concierge service Architectural and design project by Arctempus Location and surroundings Located next to Retiro Park, the Ibiza neighborhood, within the Retiro–Salamanca district, is one of the most exclusive and desirable residential areas in Madrid. With a vibrant gastronomic, cultural, and commercial offering, the surroundings provide the perfect combination of tranquility, urban lifestyle, and nature. This apartment represents a unique opportunity for...

**Contact us,**  
we will be happy to assist you,  
to offer you more details and information.

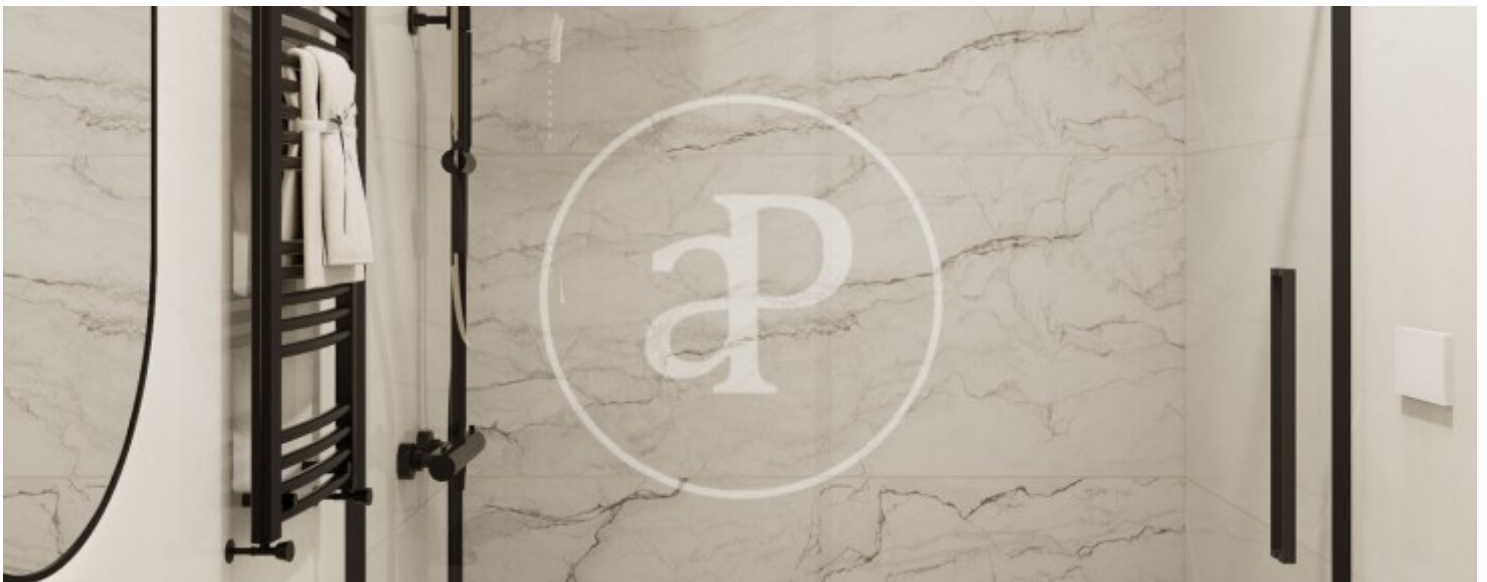
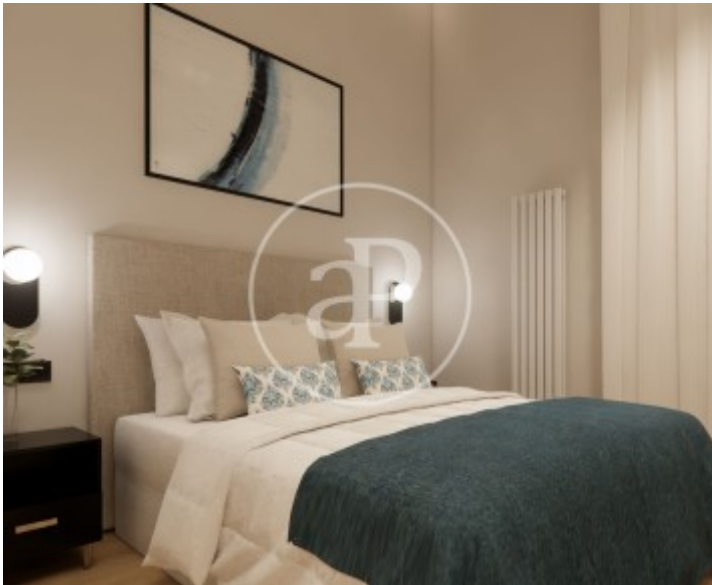
Ibiza, Madrid

REF. VM2510089



Ibiza, Madrid

REF. VM2510089



Ibiza, Madrid

REF. VM2510089



The information about any property is not binding to any offer or contract. Any verbal or written declaration made by aProperties with regards to the value or condition of the property should not be considered accurate or factual. The pictures make reference to some parts of the property at the times that they were taken. The areas, dimensions and distances that are given are approximate and should be checked by the client. The images are computer generated and are just an approximate indication of the real appearance of the property; these may change at any time. The information with regards to the property may also change at any time.

For **more information** or  
to make an appointment

[apropertiesmadrid@aproperties.es](mailto:apropertiesmadrid@aproperties.es)  
Tel: 91 800 54 65  
[www.aproperties.es](http://www.aproperties.es)