

Ibiza, Madrid

REF. AM2505027

# Flat for rent next to Retiro park.

## Features

- ✓ Heating
- ✓ AACC
- ✓ Concierge
- ✓ Furnished
- ✓ Lift

Price  
**1,900 €**

Surface

**58 m<sup>2</sup>**

Bedroom

**1**

Bathroom

**1**



**TEMPORARY RENTAL FROM JULY TO OCTOBER 2025** This apartment of 58 square meters, is located in a very attractive area of the city.

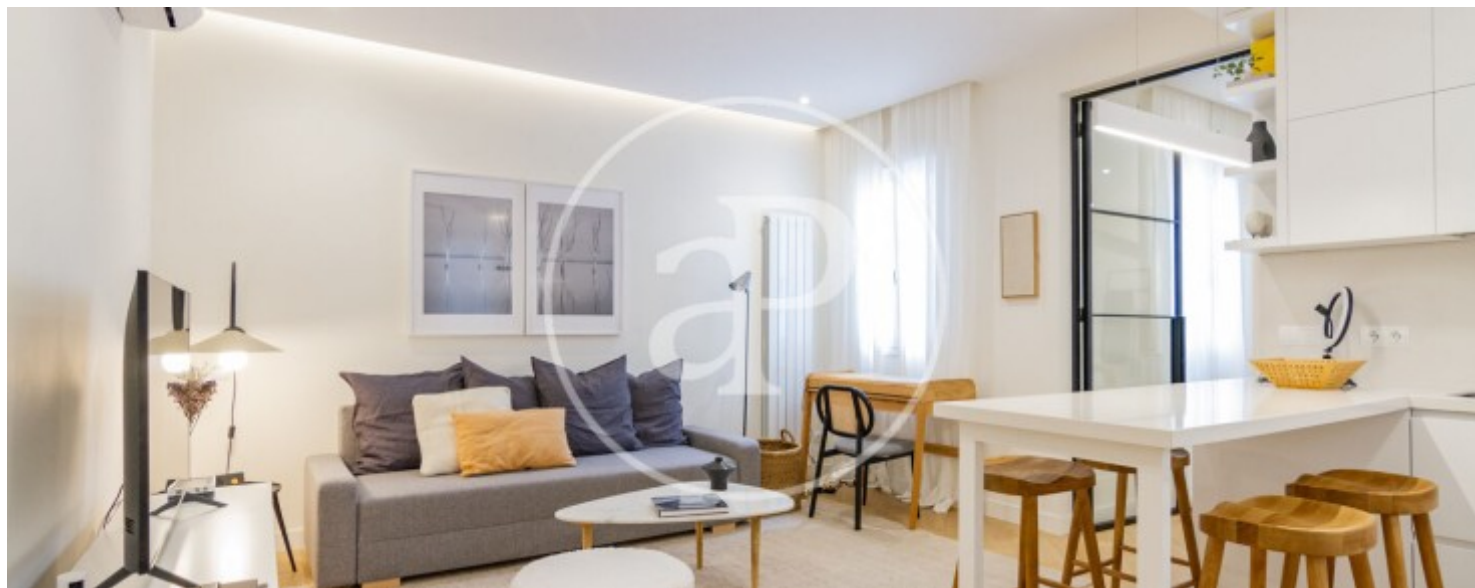
The apartment is quiet and bright. It has a bedroom with its own bathroom en suite and a living room with an integrated open kitchen, which allows you to enjoy a cozy and practical environment to cook and enjoy meals. The house is fully equipped to move into, making it an ideal choice for those looking for comfort and practicality. The decoration of the house has been designed by a professional interior designer, which gives it a very nice and pleasant style. Heating, air conditioning and wifi included in the price up to 150 euros. It is

rented by months. Available from December 1, 2024 until April 30, 2025. The location of the property is another of its attractions. It is less than five minutes from the Retiro, one of the most emblematic and beautiful parks in Madrid. In addition, the area is surrounded by leisure areas and restaurants, allowing you to enjoy the urban and social life of the city. In short, this is a perfect house for one or two people looking for a place to live, quiet, bright and well decorated, in an attractive and well connected area of the city. Can you imagine living here?

**Contact us,**  
we will be happy to assist you,  
to offer you more details and information.

Ibiza, Madrid

REF. AM2505027





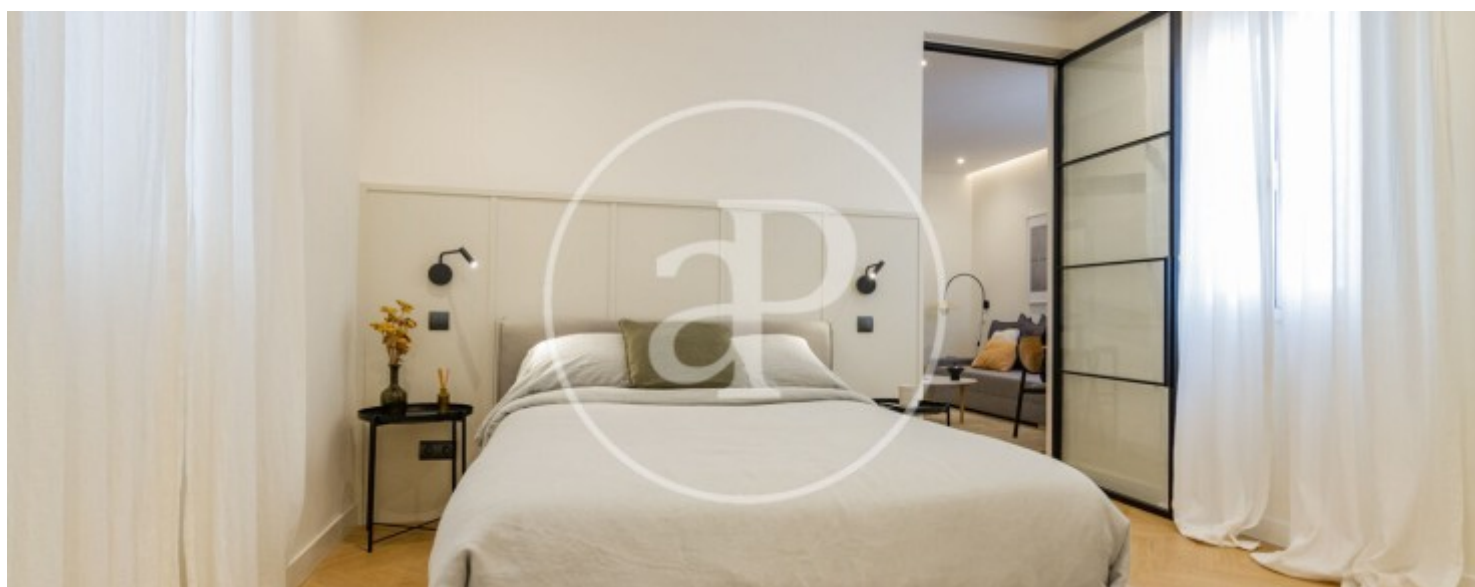
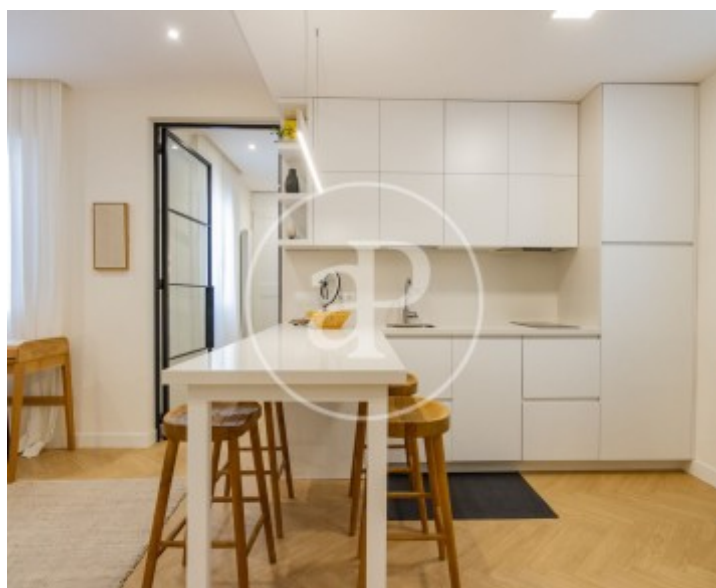
Ibiza, Madrid

REF. AM2505027



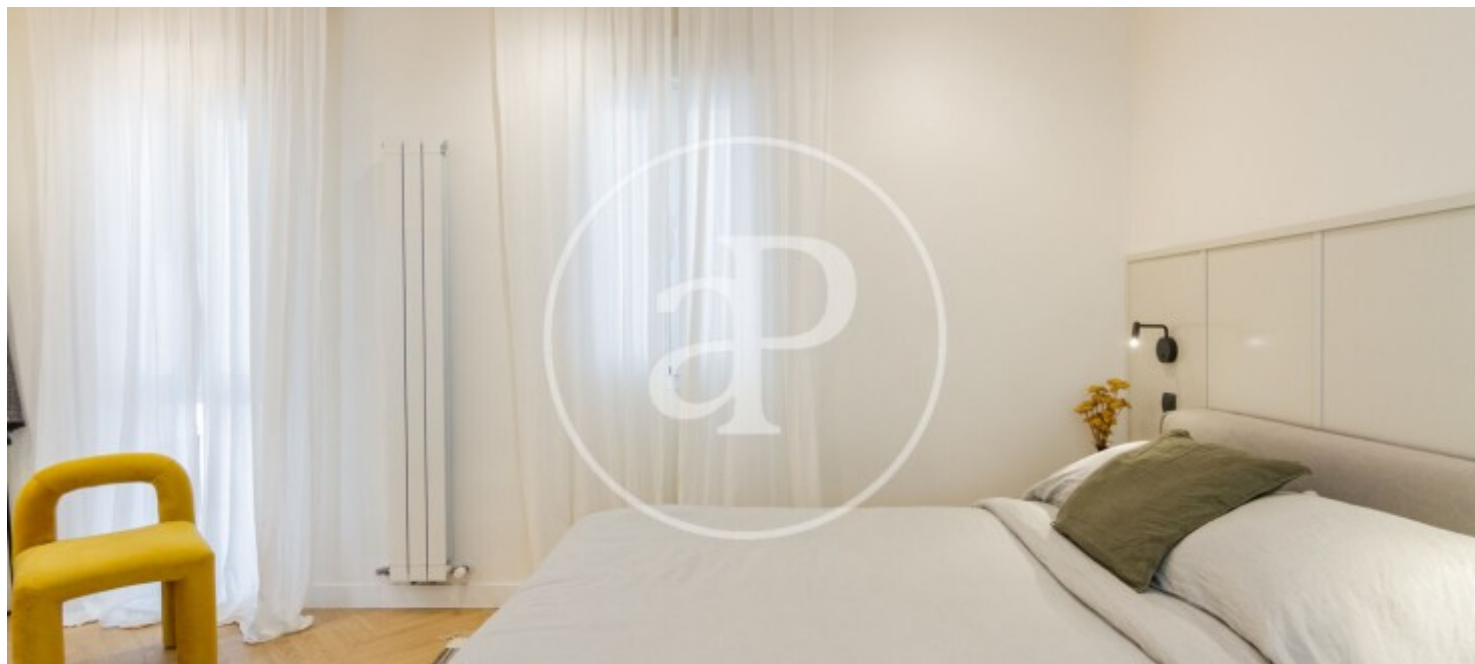
Ibiza, Madrid

REF. AM2505027



Ibiza, Madrid

REF. AM2505027



The information about any property is not binding to any offer or contract. Any verbal or written declaration made by aProperties with regards to the value or condition of the property should not be considered accurate or factual. The pictures make reference to some parts of the property at the times that they were taken. The areas, dimensions and distances that are given are approximate and should be checked by the client. The images are computer generated and are just an approximate indication of the real appearance of the property; these may change at any time. The information with regards to the property may also change at any time.

For **more information** or  
to make an appointment

[apropertiesmadrid@aproperties.es](mailto:apropertiesmadrid@aproperties.es)  
Tel: 91 800 54 65  
[www.aproperties.es](http://www.aproperties.es)