

Huertas - Cortes, Madrid

REF. VM2604053

Flat for sale in calle de Atocha

Features

- ✓ Views
- ✓ Heating
- ✓ Boxroom
- ✓ AACC
- ✓ Lift

Price
1,795,000 €

Surface
209 m²

Bedrooms
3

Bathrooms
2



Exclusive house of 209 m² in the heart of the neighborhood of Las Letras, in a classic building from 1880 with elevator.

Highlight its 3.34 m ceilings, its luminosity and a careful comprehensive renovation that combines character and comfort. The day area is built around a spacious living-dining room with two balconies to the main street and floor-to-ceiling windows, which provide plenty of light throughout the day. The kitchen, independent, spacious and functional, is a central space, comfortable both for daily use and to receive. The rest area is distributed in three bedrooms. The main one has a dressing room, office area and balcony. The other two have cabinets

and good storage space. There are two full bathrooms. The house maintains the character of a classic finca, moldings, high ceilings and good proportions, with a well-done renovation and all modern amenities: ducted air conditioning and individual heating natural gas. Also includes storage room on the top floor. The building is renovating the entrance and common areas. Located in the neighborhood of Cortes-Las Letras, one of the most special areas of Madrid for its atmosphere and cultural life, with a wide range of restaurants, galleries and shops. A few minutes walk from Retiro Park and...

Contact us,
we will be happy to assist you,
to offer you more details and information.

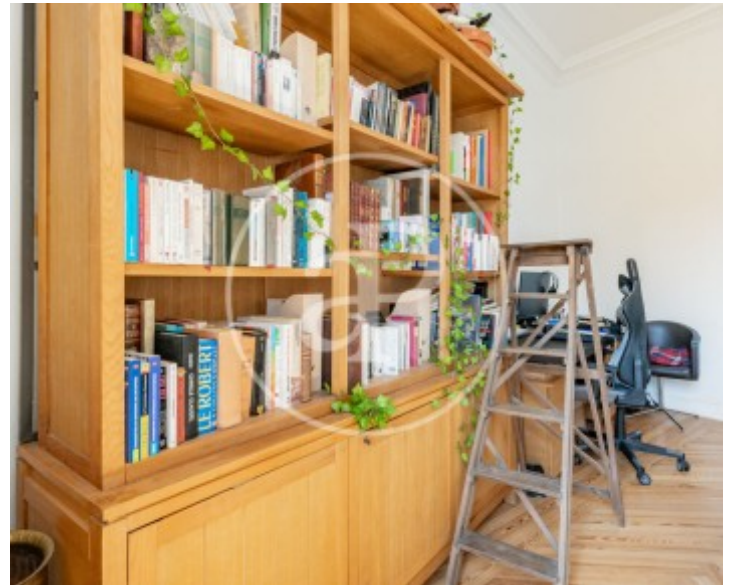
Huertas - Cortes, Madrid

REF. VM2604053



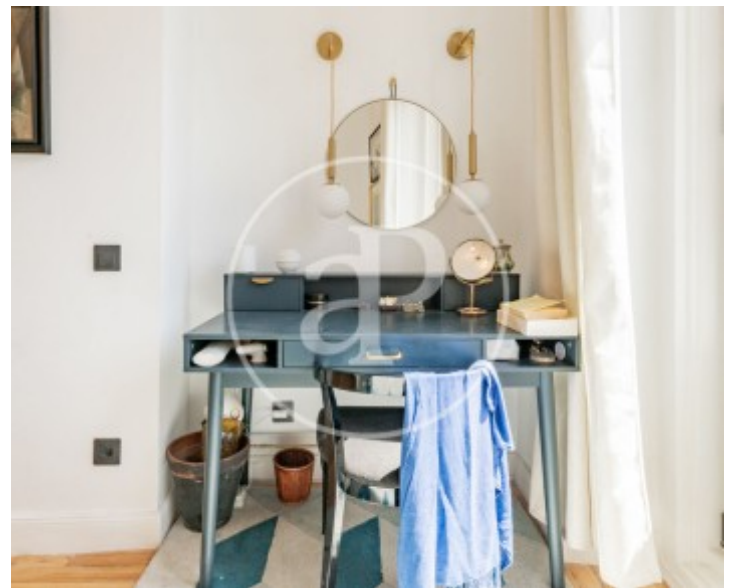
Huertas - Cortes, Madrid

REF. VM2604053



Huertas - Cortes, Madrid

REF. VM2604053



Huertas - Cortes, Madrid

REF. VM2604053



The information about any property is not binding to any offer or contract. Any verbal or written declaration made by aProperties with regards to the value or condition of the property should not be considered accurate or factual. The pictures make reference to some parts of the property at the times that they were taken. The areas, dimensions and distances that are given are approximate and should be checked by the client. The images are computer generated and are just an approximate indication of the real appearance of the property; these may change at any time. The information with regards to the property may also change at any time.

For **more information** or
to make an appointment

apropertiesmadrid@aproperties.es
Tel: 91 800 54 65
www.aproperties.es