

Huertas - Cortes, Madrid

REF. VM2510012

Flat for sale in Huertas - Cortes (Madrid)

Features

- ✓ Views
- ✓ Heating
- ✓ Boxroom
- ✓ AACC
- ✓ Lift

Surface

175 m²

Bedrooms

3

Bathrooms

3

Price

950,000 €



Appropriates presents a very bright, south-facing, third-floor exterior apartment in need of renovation.

Located in the Cortes neighborhood, in an iconic 1910 building. According to the Land Registry, it has a constructed area of 175 m², of which 132 m² is the home. Ideal for a 2-bedroom, 2-bathroom project. It also includes a large storage room located in the attic of the same building. The Cortes Huertas neighborhood, also known as the Literary Quarter (Barrio de las Letras) due to its intense literary activity during the Golden Age, where important authors such as Cervantes and Lope de Vega coexisted, is bordered by Atocha Street, Calle de La Cruz, Carrera de San

Jerónimo, and Paseo del Prado. Lively both day and night, it stands out for its wide cultural offering, featuring some of the capital's most important theaters, restaurants, art galleries, and artisan and painter studios. Today, the vast majority of its buildings still retain architectural elements from that era, which sets it apart from other neighborhoods in the capital. It's very well connected to the entire city, just minutes from the Retiro Park and iconic landmarks such as the Royal Palace, Puerta del Sol, and Madrid de los Austrias. A great choice for living. Can you imagine...

Contact us,
we will be happy to assist you,
to offer you more details and information.

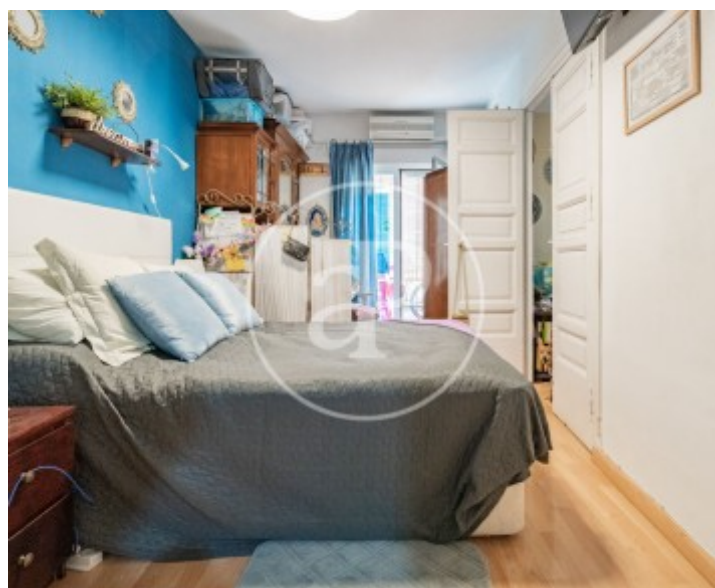
Huertas - Cortes, Madrid

REF. VM2510012



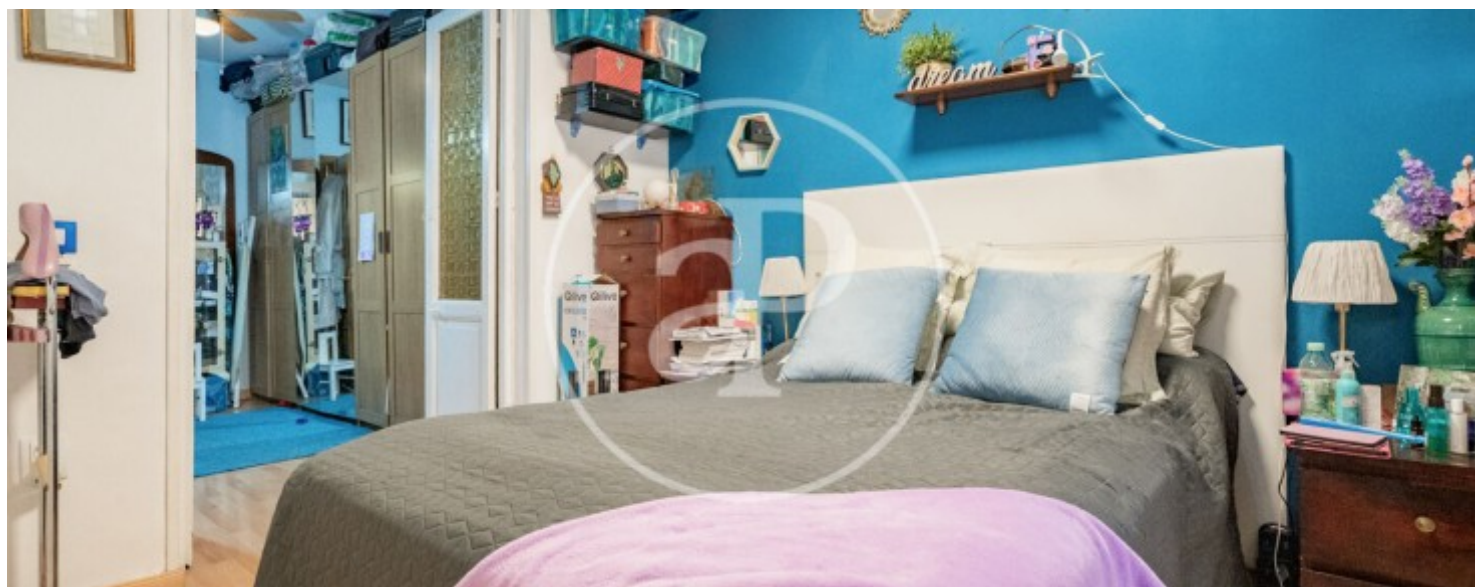
Huertas - Cortes, Madrid

REF. VM2510012



Huertas - Cortes, Madrid

REF. VM2510012



Huertas - Cortes, Madrid

REF. VM2510012



The information about any property is not binding to any offer or contract. Any verbal or written declaration made by aProperties with regards to the value or condition of the property should not be considered accurate or factual. The pictures make reference to some parts of the property at the times that they were taken. The areas, dimensions and distances that are given are approximate and should be checked by the client. The images are computer generated and are just an approximate indication of the real appearance of the property; these may change at any time. The information with regards to the property may also change at any time.

For **more information** or
to make an appointment

apropertiesmadrid@aproperties.es
Tel: 91 800 54 65
www.aproperties.es