

(Guindalera)

Ref: ONM2403004



## *New Development in Guindalera*

Discover the magnificent development of 6 3 and 2 bedroom homes, designed for maximum comfort and luxury in every detail. These residential residences offer an exclusive design and high quality finishes that meet environmental and energy saving requirements. Each home has large open-plan spaces, designed to allow cross ventilation and make the most of natural light. The integrated, fully fitted and equipped kitchen opens onto a spacious living room with fireplace, creating a perfect space for socialising and entertaining. Located in the privileged area of Salamanca, these residences offer an exclusive lifestyle close to key points of interest. In addition, the building boasts innovative technology, including geothermal heating and air-conditioning installations, and a multi-purpose rooftop space with solarium and high-pressure pool-jacuzzi-hydromassage for total relaxation. Can you imagine living here?

Madrid / Guindalera

Surface  
185 m<sup>2</sup> - 340 m<sup>2</sup>  
Units  
6  
Completion  
Q1 2024

- ✓ Views
- ✓ Heating
- ✓ Boxroom
- ✓ AACC
- ✓ Terrace
- ✓ Pool
- ✓ Lift
- ✓ Security
- ✓ Concierge
- ✓ Has parking

Price from 998,500 €



(Guindalera)

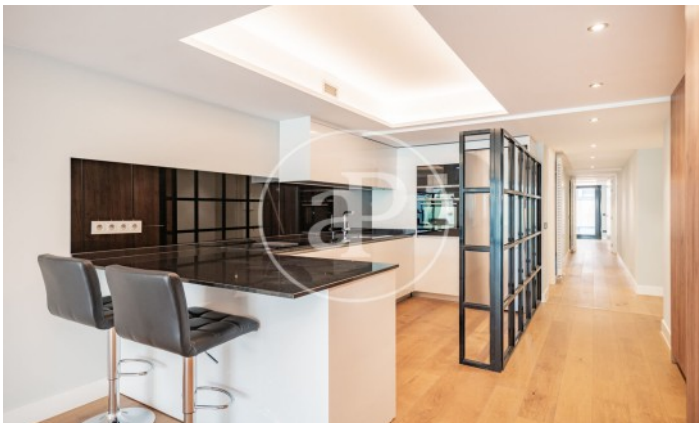
Ref: ONM2403004

### Units in this development

Type	Unit	Surface	Bedrooms	Bathrooms	Price	State
Flat	Bajo A	340 m <sup>2</sup>	3	4	€ 1,720,282	Available
Flat	1° A	291 m <sup>2</sup>	3	4	€ 1,525,400	Available
Flat	2° B	238 m <sup>2</sup>	3	3	€ 1,268,996	Available
Flat	3° B	185 m <sup>2</sup>	2	3	€ 998,500	Available

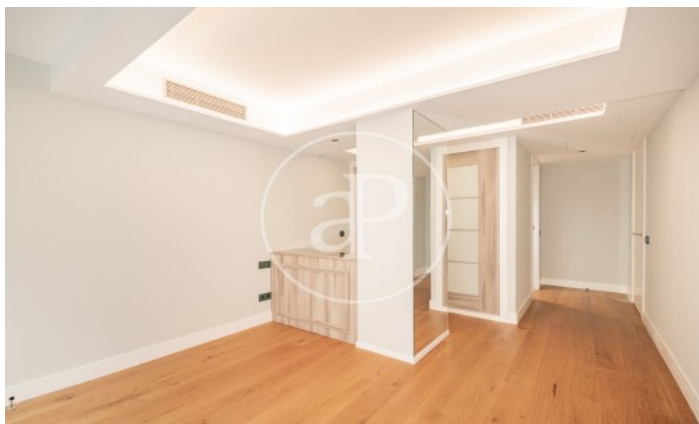
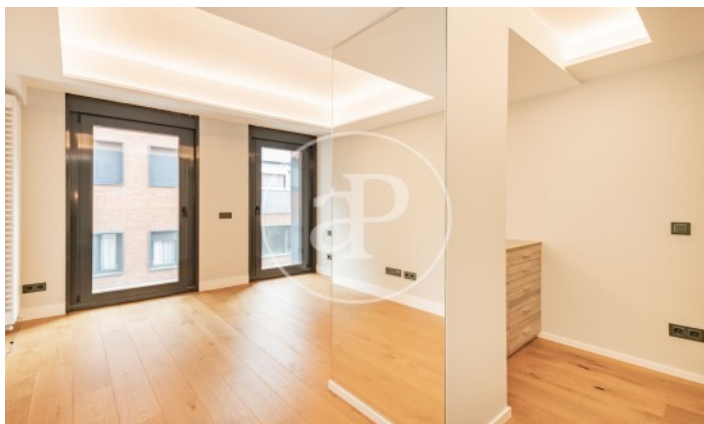
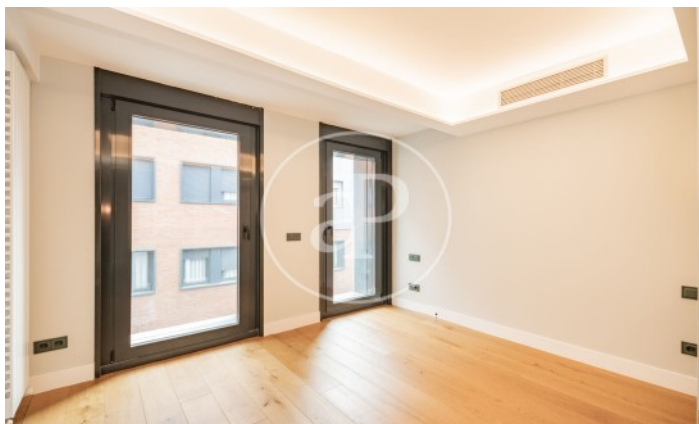
(Guindalera)

Ref: ONM2403004



(Guindalera)

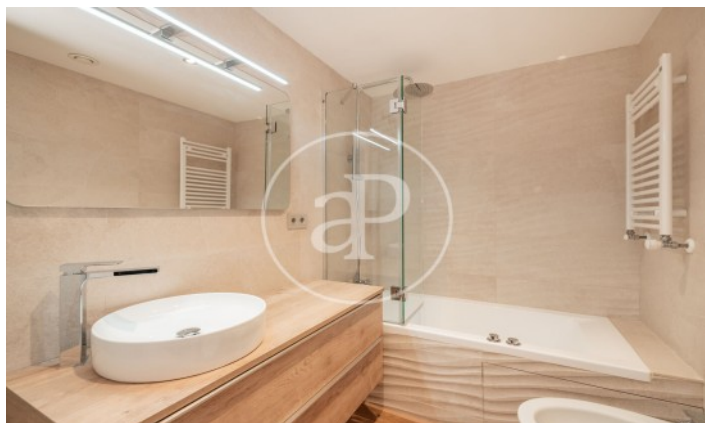
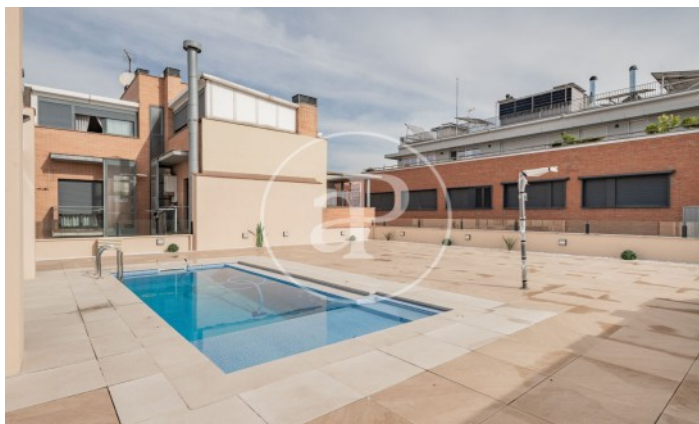
Ref: ONM2403004





(Guindalera)

Ref: ONM2403004



The information about any property is not binding to any offer or contract. Any verbal or written declaration made by aProperties with regards to the value or condition of the property should not be considered accurate or factual. The pictures make reference to some parts of the property at the times that they were taken. The areas, dimensions and distances that are given are approximate and should be checked by the client. The images are computer generated and are just an approximate indication of the real appearance of the property; these may change at any time. The information with regards to the property may also change at any time.

Contact us today for more information or to arrange a viewing

Tel: 91 800 54 65

[apropertiesmadrid@aproperties.es](mailto:apropertiesmadrid@aproperties.es)

<https://www.aproperties.es>