

Guindalera, Madrid

REF. AM2404023



Flat for rent in Lista (Madrid)

Features

- ✓ Views
- ✓ Heating
- ✓ Furnished
- ✓ AACC
- ✓ Lift
- ✓ Concierge

Price

2,500 €

Surface

108 m²

Bedrooms

3

Bathrooms

2



AVAILABLE FOR SEASONAL RENTAL FROM MAY 31.

Great brand new exterior apartment, located within a stately estate. The property has luxury finishes of first quality, is delivered fully furnished and decorated, as it appears in the pictures. It consists of: Living / Dining room: spacious, bright and overlooking the outside. Kitchen: large, equipped with top brand appliances. Master bedroom: Very spacious, has spacious closets and bathroom with shower. Bedroom 2: double, with large built-in closets. Bedroom 3: Double, with built in closets. Second bathroom: Complete with shower, it serves the living room and the bedrooms. All rooms are equipped with air

conditioning, heating and double glazed windows. The property is located in the neighborhood of Salamanca a few meters from schools, sports centers, supermarkets, restaurants and trendy cafes. The transport connections of the apartment are wide and varied: the metro stations of Diego de León and Av. de América are very close to the property, as well as several bus and cab lines. Online booking is available. Can you imagine living here?

Contact us,
we will be happy to assist you,
to offer you more details and information.

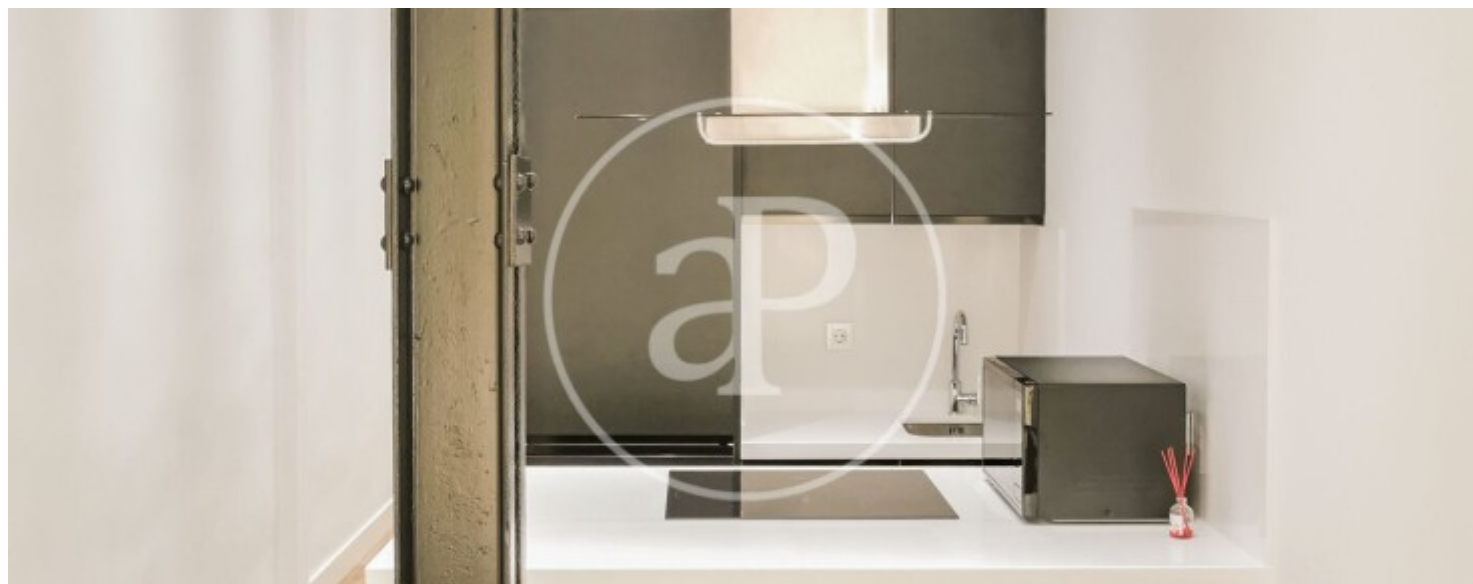
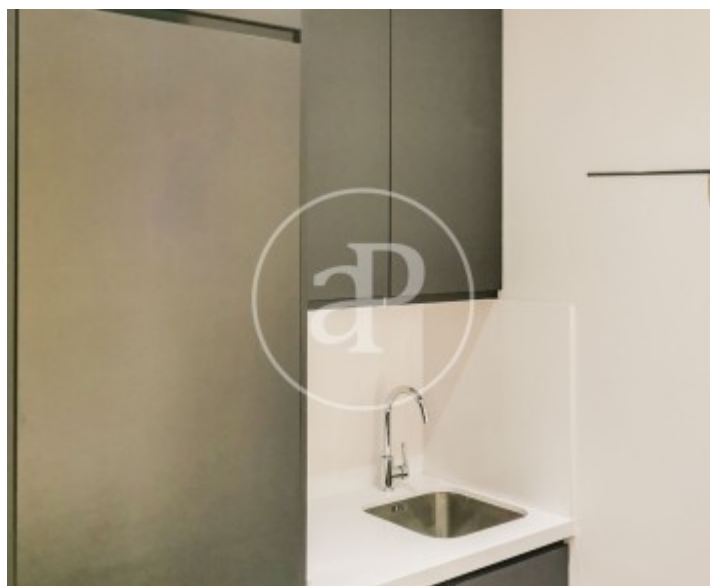
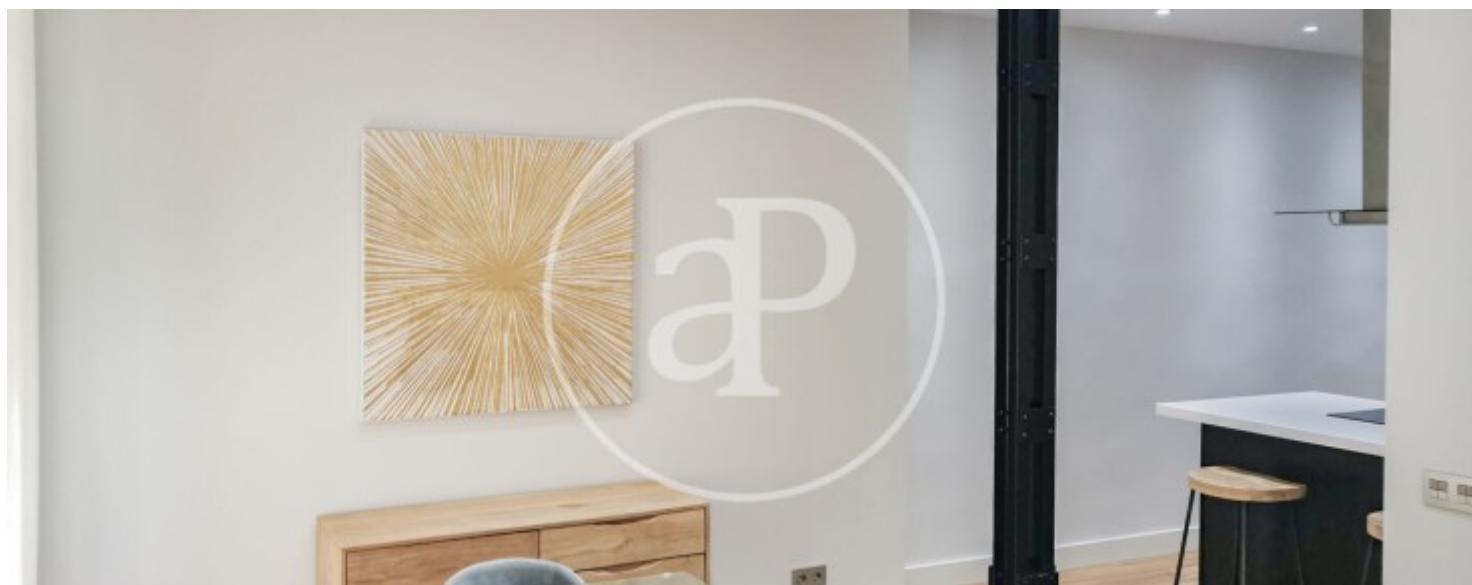
Guindalera, Madrid

REF. AM2404023



Guindalera, Madrid

REF. AM2404023



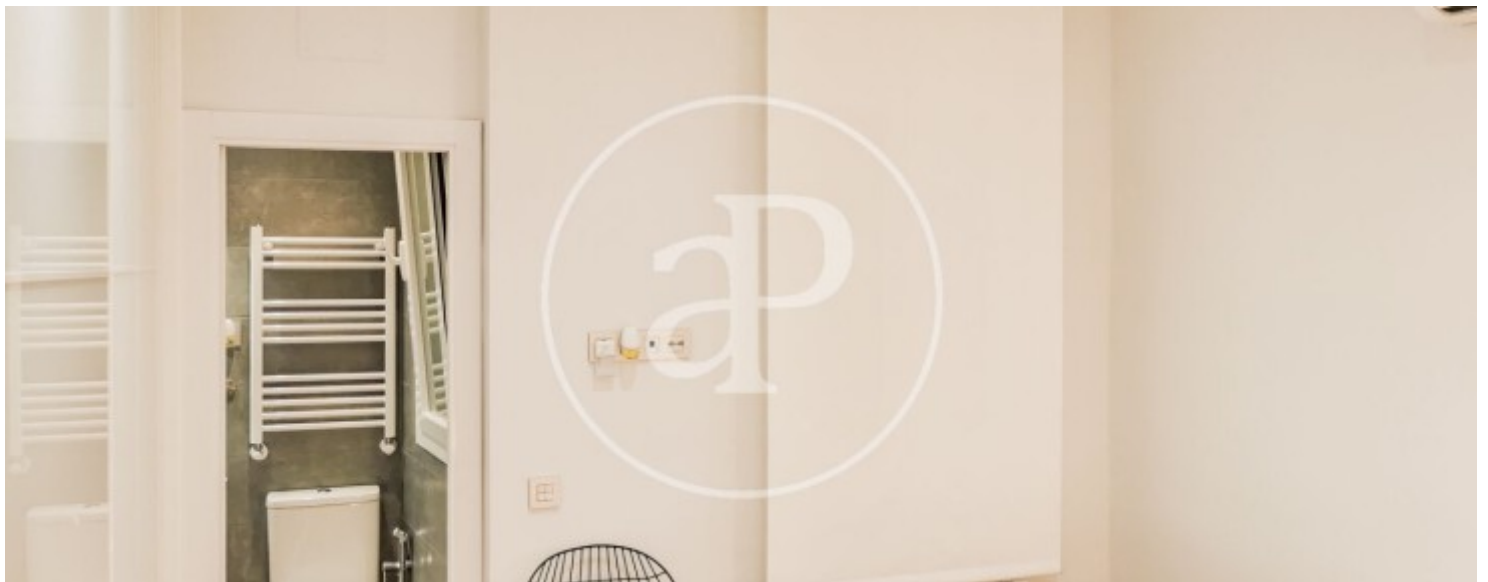
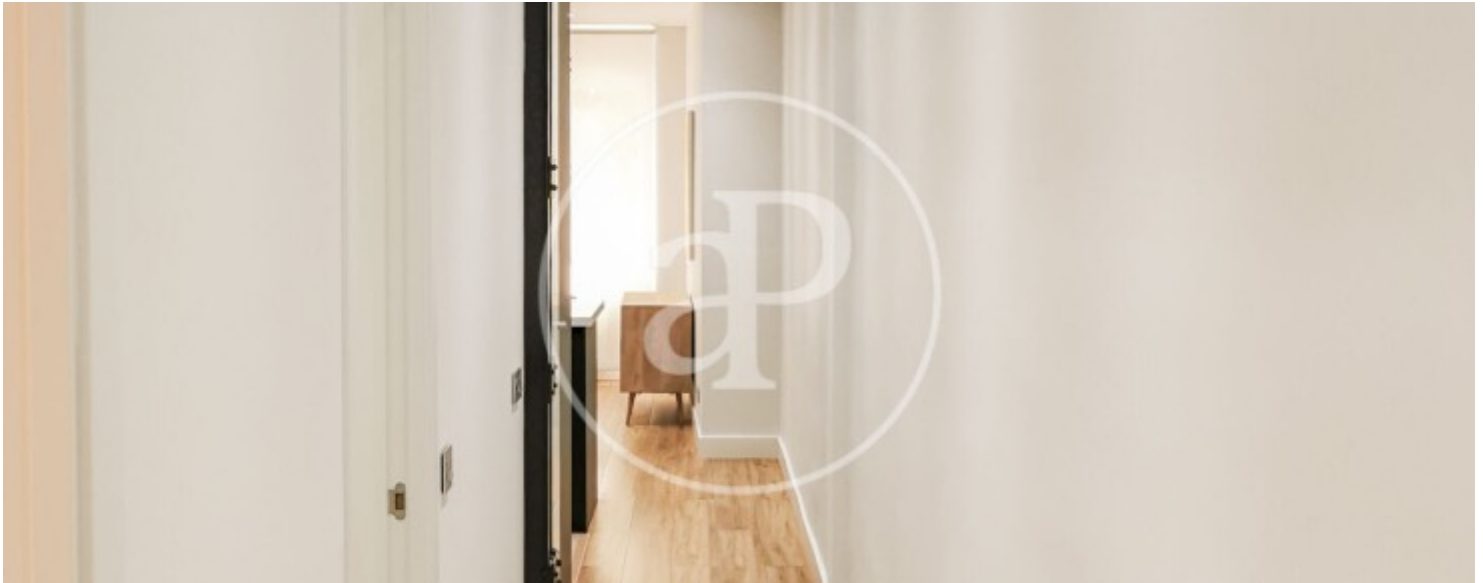


A PROPERTIES
REAL ESTATE

Calle Serrano 60
28001 Madrid
T. 91 800 54 65
www.aproperties.es

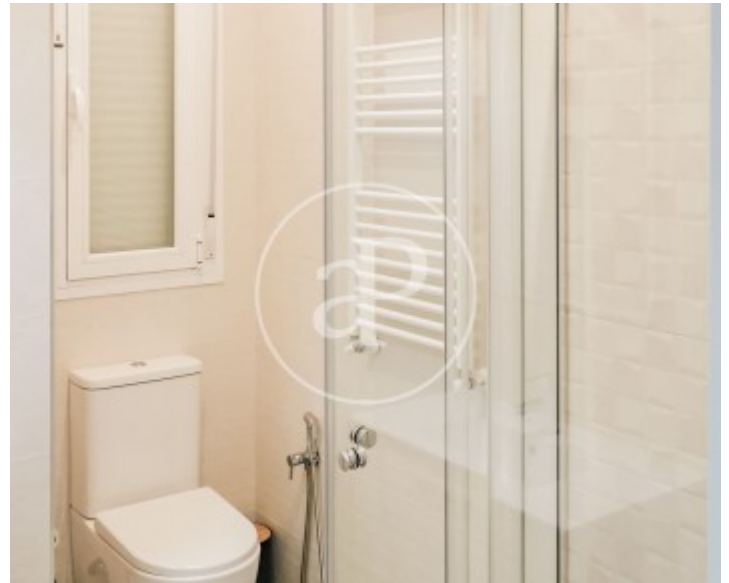
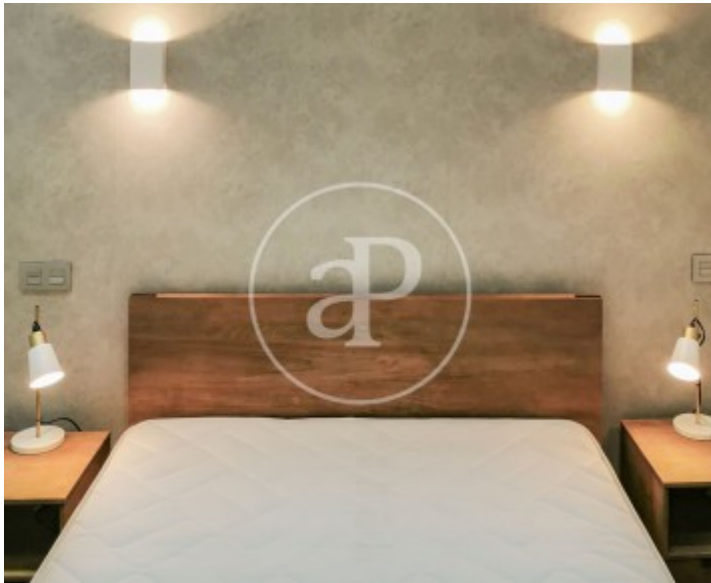
Guindalera, Madrid

REF. AM2404023



Guindalera, Madrid

REF. AM2404023



The information about any property is not binding to any offer or contract. Any verbal or written declaration made by aProperties with regards to the value or condition of the property should not be considered accurate or factual. The pictures make reference to some parts of the property at the times that they were taken. The areas, dimensions and distances that are given are approximate and should be checked by the client. The images are computer generated and are just an approximate indication of the real appearance of the property; these may change at any time. The information with regards to the property may also change at any time.



For **more information** or
to make an appointment

apropertiesmadrid@aproperties.es
Tel: 91 800 54 65
www.aproperties.es