

Guindalera, Madrid

REF. VM2605044

Flat for sale in Guindalera

Features

- ✓ Heating
- ✓ AACC
- ✓ Has parking
- ✓ Furnished
- ✓ Lift

Price
515,000 €

Surface

57 m²

Bedrooms

2

Bathroom

1



In one of the most prominent residential areas of the Salamanca district, this outdoor apartment in Guindalera represents an excellent opportunity both for those looking for comfortable and functional housing in Madrid and for investors who prioritize locations with high rental demand. Located in a modern estate of 2009, near Francisco Silvela, María de Molina and Avenida de América, combines residential tranquility with a privileged connection to the center and the main access roads of the city. The house has 57 m² distributed in a bright outdoor living-dining room with integrated kitchen, designed to make the most of natural light. It has two bedrooms, one of them exterior, plus air conditioning and duct heating, which guarantees comfort throughout the year. The property also includes a

garage space on the estate, an especially appreciated value in this area of Madrid. Living in Guindalera is enjoying an authentic and residential neighborhood, increasingly valued for its balance between neighborhood life and urban connection. Its traditional shops, restaurants, green areas and excellent communication by metro and buses make the area one of the most practical and attractive to live or invest in Madrid. A bright, functional and well located house, perfect for those looking for a modern apartment with garage in the district of Salamanca or an investment with great potential...

Contact us,
we will be happy to assist you,
to offer you more details and information.

Guindalera, Madrid

REF. VM2605044



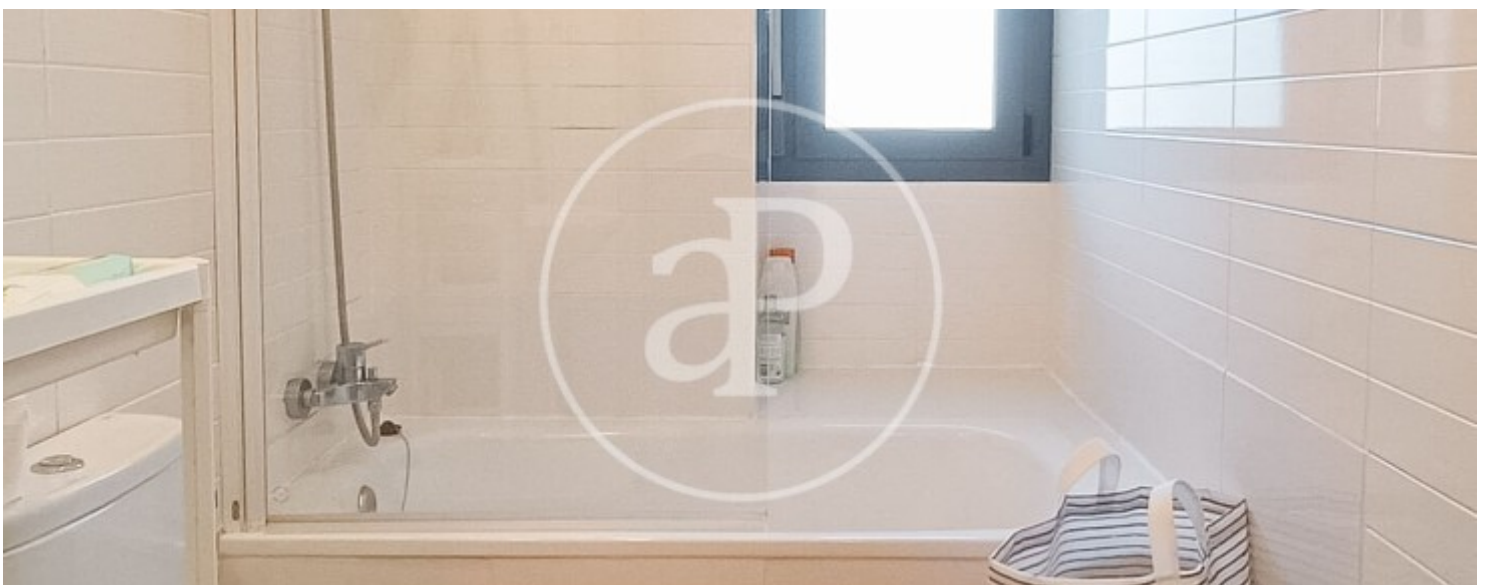
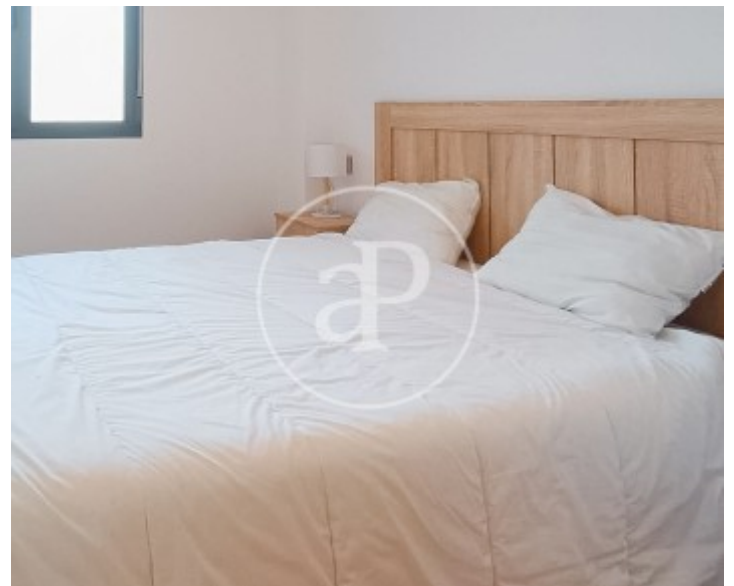
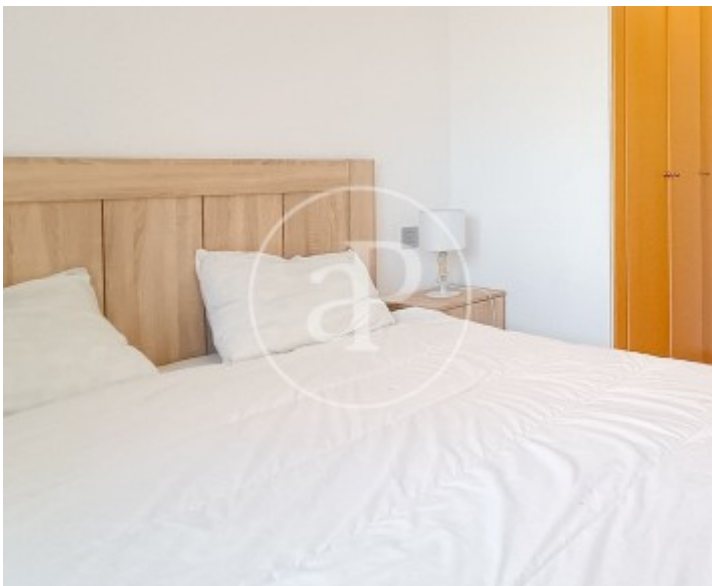
Guindalera, Madrid

REF. VM2605044



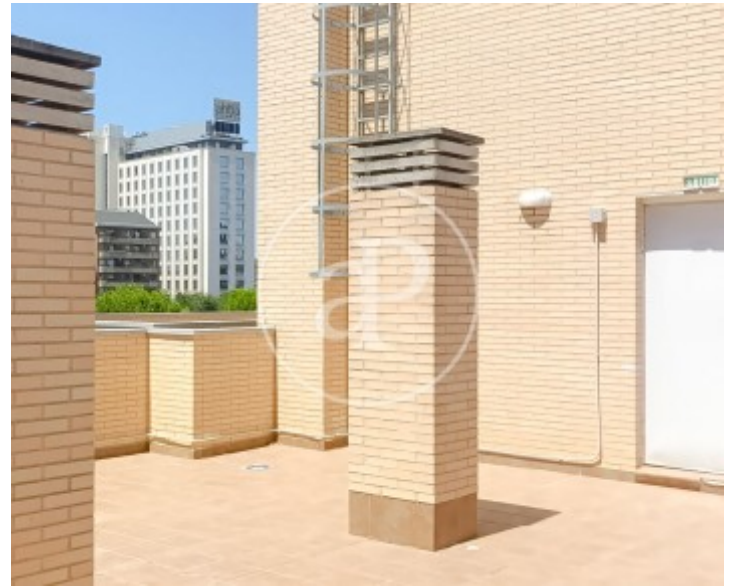
Guindalera, Madrid

REF. VM2605044



Guindalera, Madrid

REF. VM2605044



The information about any property is not binding to any offer or contract. Any verbal or written declaration made by aProperties with regards to the value or condition of the property should not be considered accurate or factual. The pictures make reference to some parts of the property at the times that they were taken. The areas, dimensions and distances that are given are approximate and should be checked by the client. The images are computer generated and are just an approximate indication of the real appearance of the property; these may change at any time. The information with regards to the property may also change at any time.

For **more information** or
to make an appointment

apropertiesmadrid@aproperties.es
Tel: 91 800 54 65
www.aproperties.es