

Guindalera, Madrid

REF. AM2511049

Studio for rent in Conde de Vilches street

Features

- ✓ Views
- ✓ Heating
- ✓ Furnished
- ✓ AACC
- ✓ Terrace
- ✓ Lift
- ✓ Has parking

Surface

35 m²

Bathroom

1



Price

Price upon request

Bright studio apartment with a fully equipped kitchen featuring integrated appliances and a separate sleeping area with a double bed.

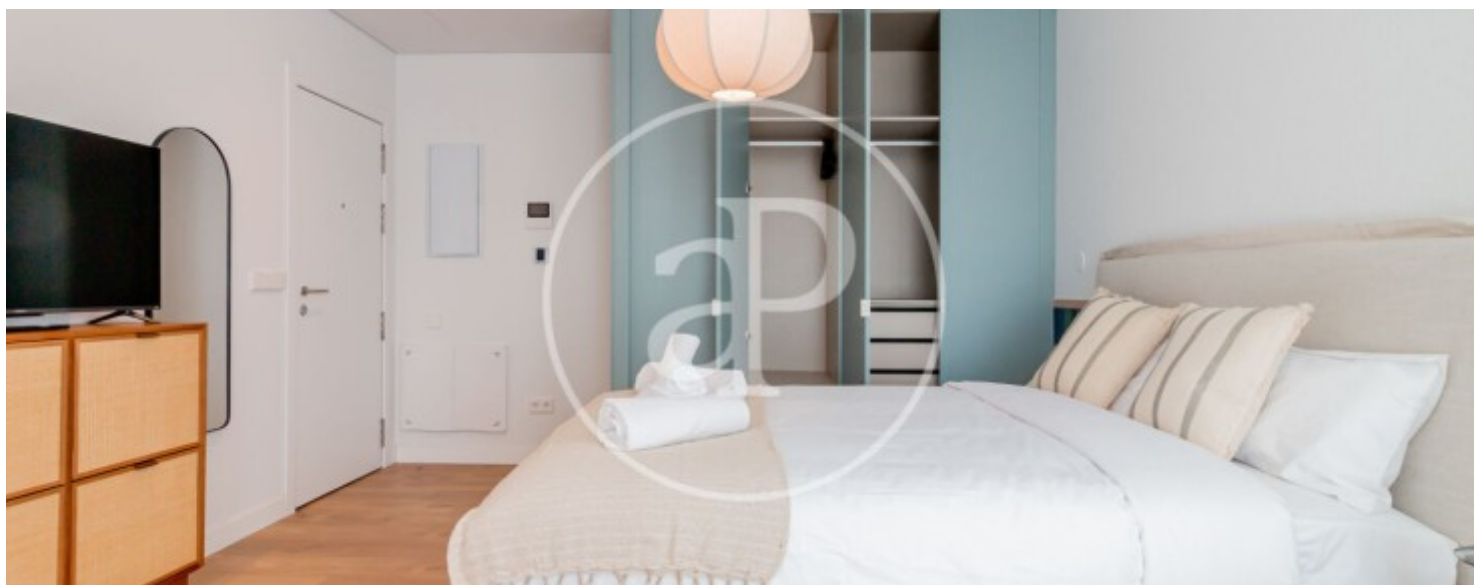
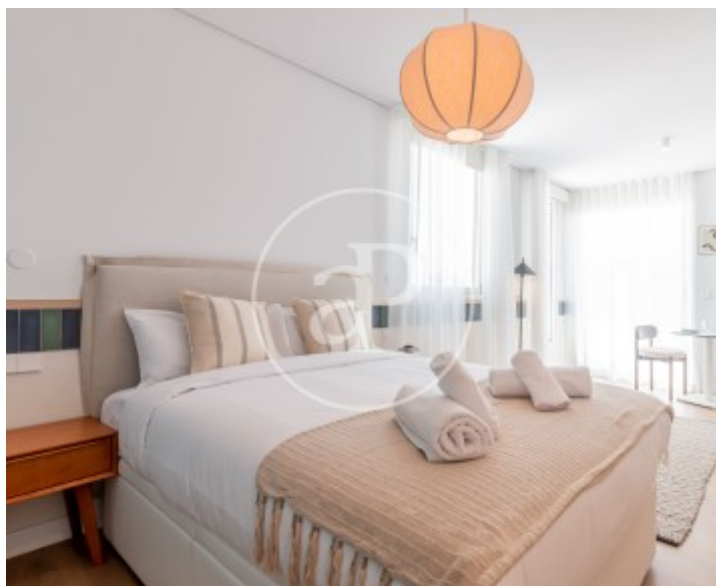
It includes a private bathroom and a 20m² private terrace. This excellent layout, combined with access to the communal areas, ensures you won't need anything else during your stay! For your peace of mind, a security deposit is required and will be refunded at the end of your stay. The building boasts several communal areas, including a coworking space with a coffee station and a large 300m² rooftop terrace on the fifth floor! Perfect for relaxing and sunbathing, working, or even enjoying a pleasant get-together with loved

ones. Located on Calle Conde de Vilches, in the Salamanca district, one of Madrid's most attractive and vibrant areas. Well-connected by metro and bus, and surrounded by restaurants, shops, gyms, and green spaces. Just a 10-minute walk from the Diego de León, Cartagena, and Avenida de América metro stations. NEW CONSTRUCTION WITH BRAND NEW APARTMENTS. - ALL UTILITIES INCLUDED IN THE PRICE - Fully furnished and equipped, ready to move in - High-speed Wi-Fi included. - Bicycle parking included. - Car parking subject to availability, not included in the price. - 300m²...

Contact us,
we will be happy to assist you,
to offer you more details and information.

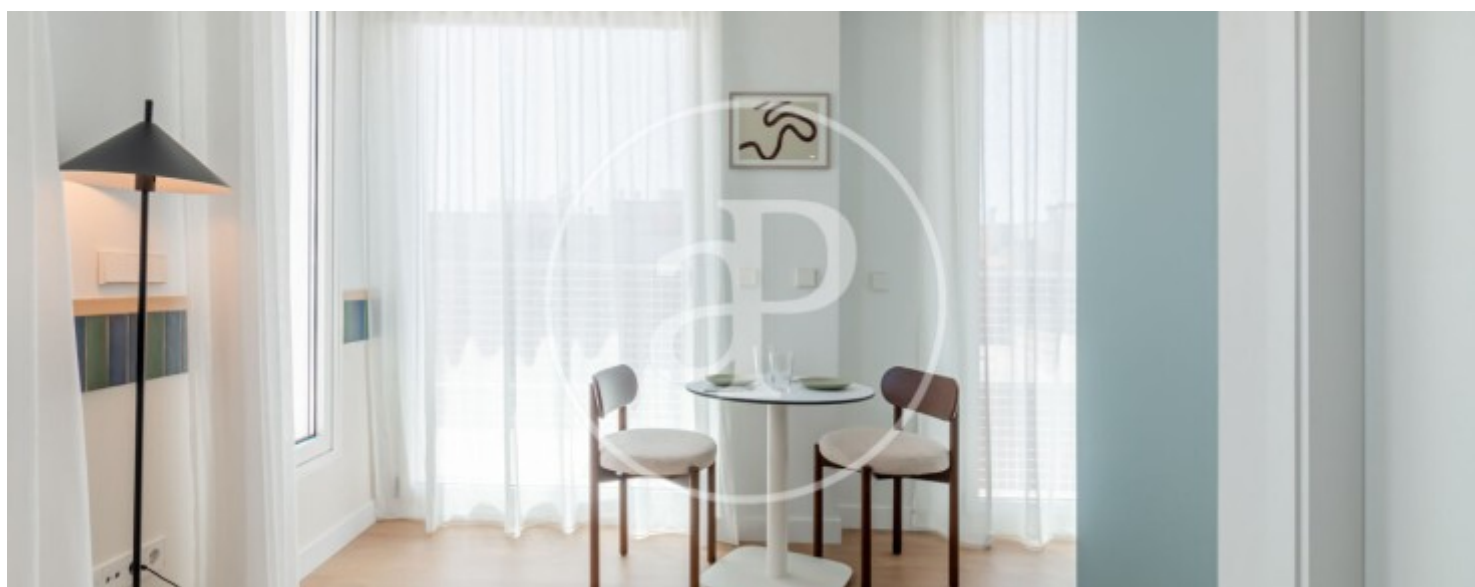
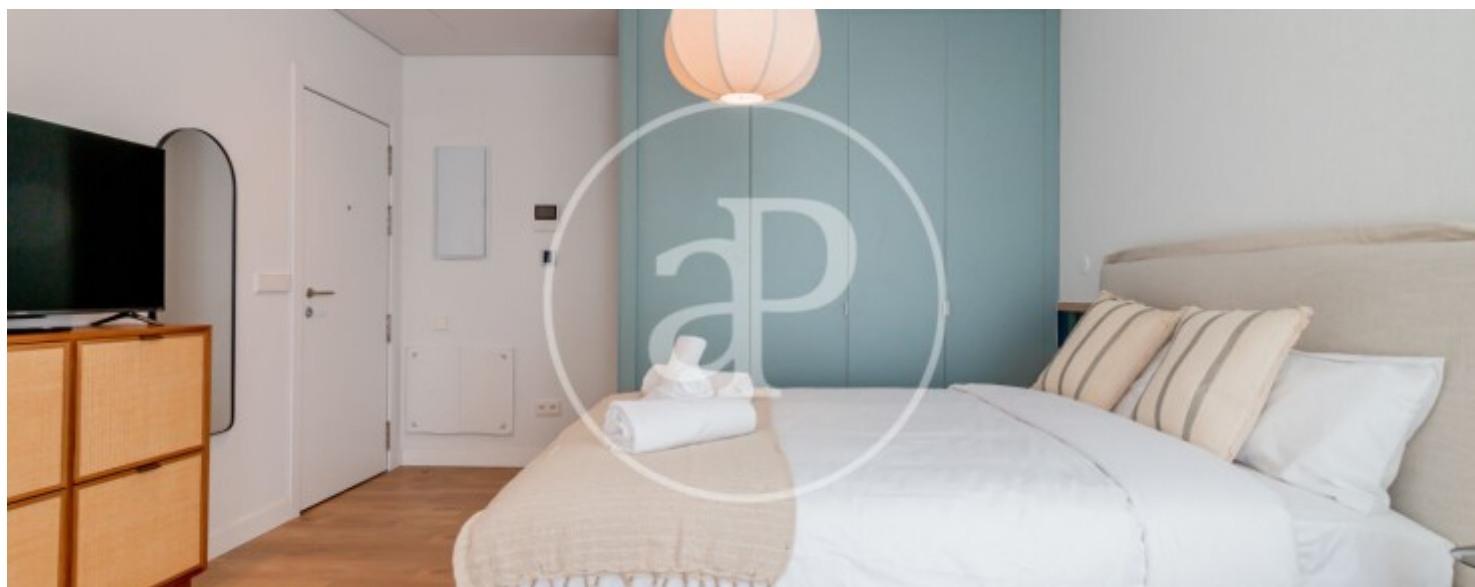
Guindalera, Madrid

REF. AM2511049



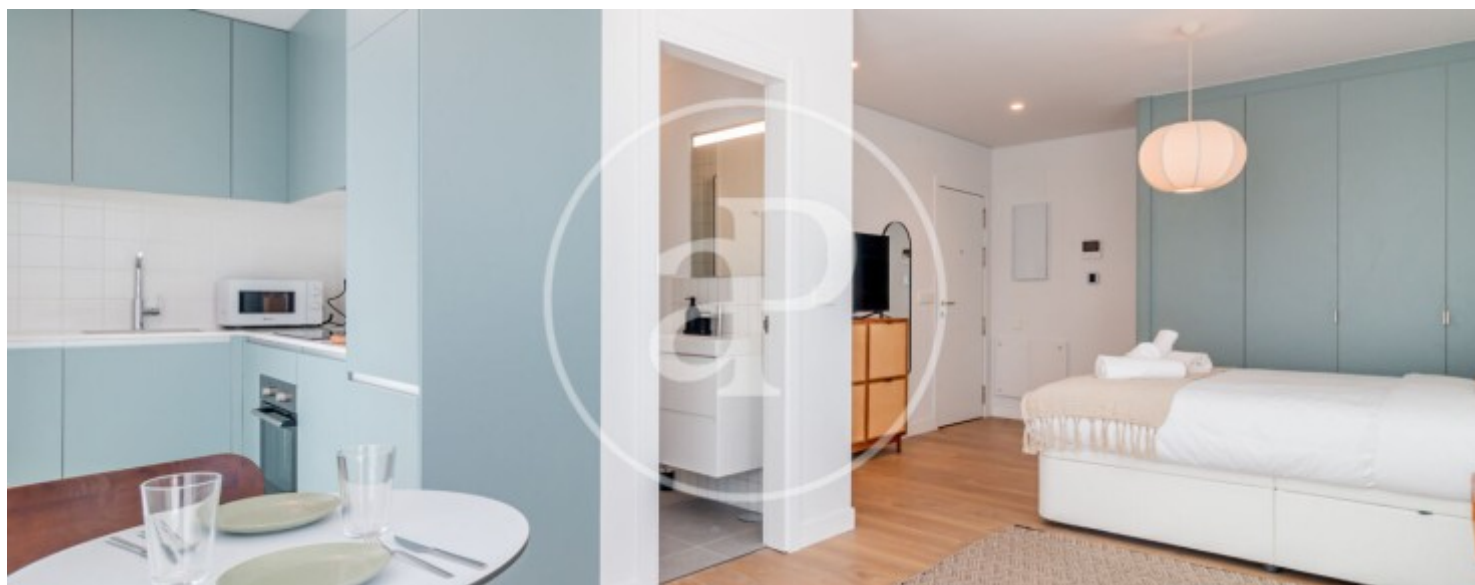
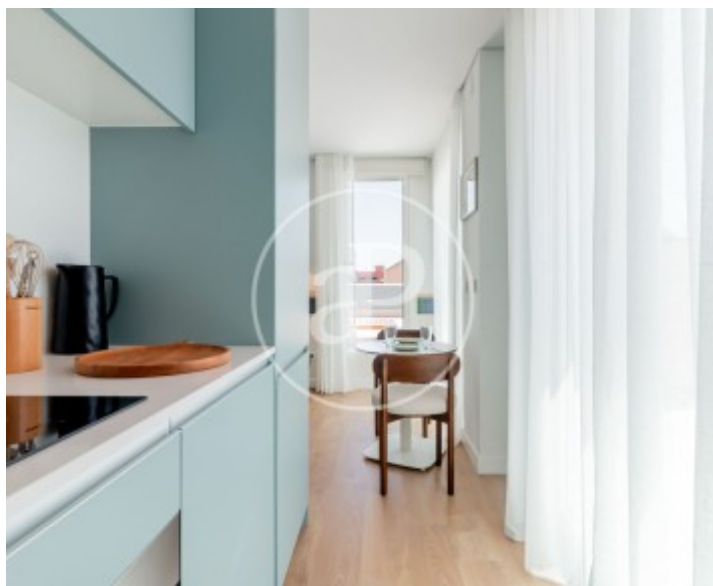
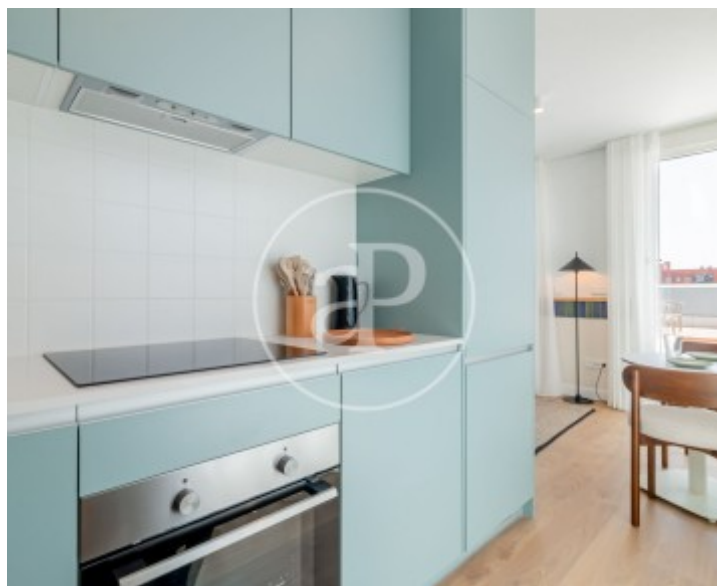
Guindalera, Madrid

REF. AM2511049



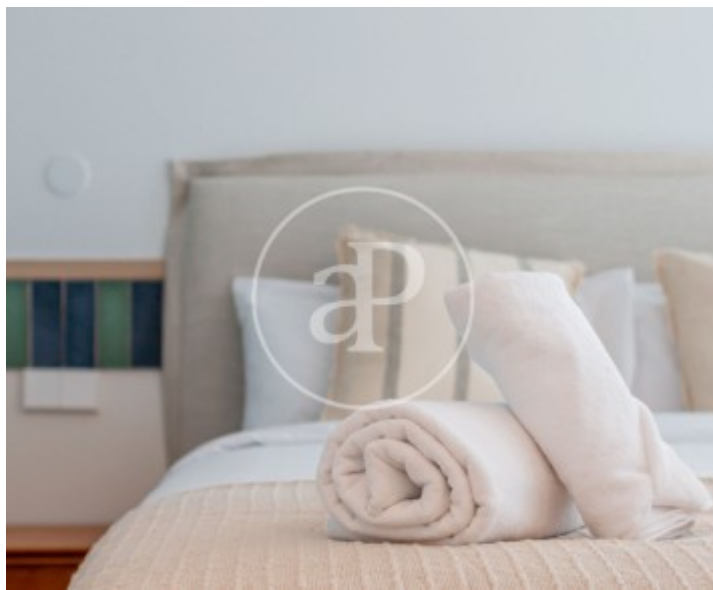
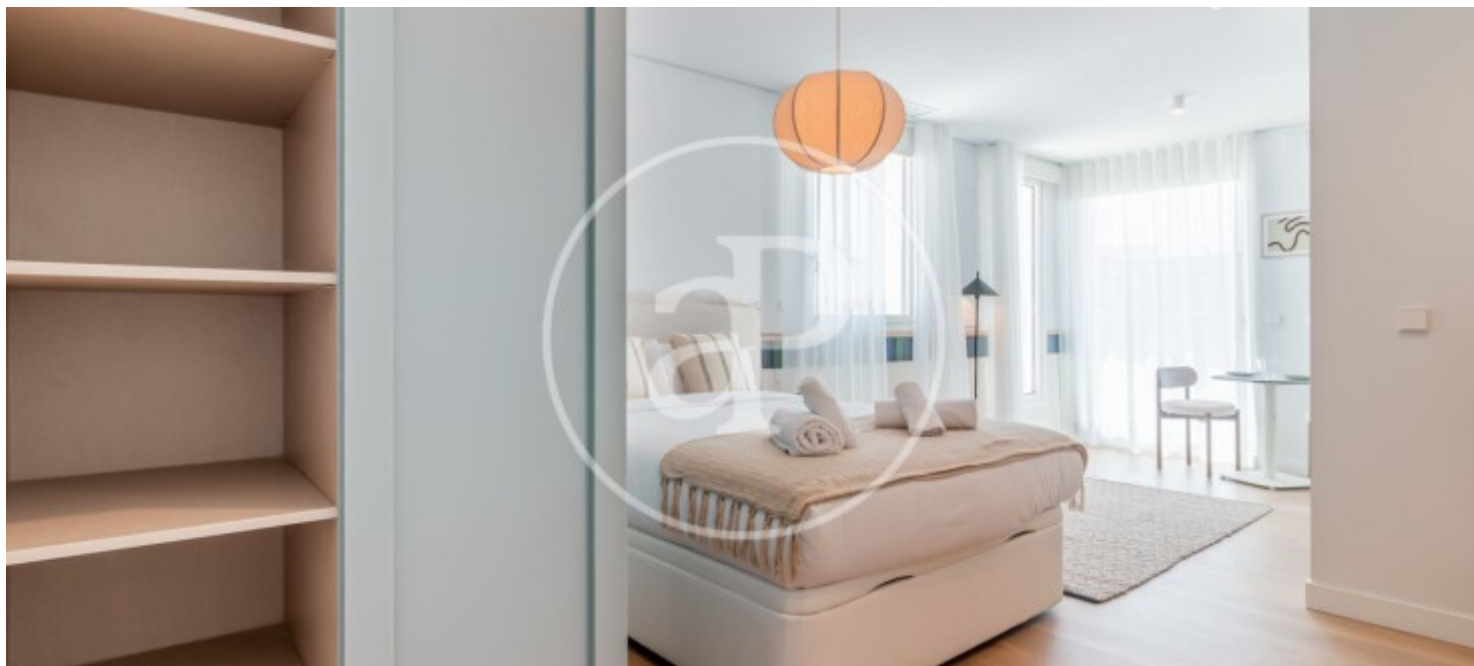
Guindalera, Madrid

REF. AM2511049



Guindalera, Madrid

REF. AM2511049



The information about any property is not binding to any offer or contract. Any verbal or written declaration made by aProperties with regards to the value or condition of the property should not be considered accurate or factual. The pictures make reference to some parts of the property at the times that they were taken. The areas, dimensions and distances that are given are approximate and should be checked by the client. The images are computer generated and are just an approximate indication of the real appearance of the property; these may change at any time. The information with regards to the property may also change at any time.

For **more information** or
to make an appointment

apropertiesmadrid@aproperties.es
Tel: 91 800 54 65
www.aproperties.es