



Guindalera, Madrid

REF. AM2507013

House for rent in Guindalera (Madrid)

Features

- ✓ Heating
- ✓ Boxroom
- ✓ Terrace
- ✓ Furnished
- ✓ AACC

Price

4,000 €

Surface

300 m²

Bedrooms

4

Bathrooms

4



This magnificent, recently renovated detached villa is located in a quiet residential neighborhood next to Francisco Silvela, just a 5-minute walk from the Diego de León metro station.

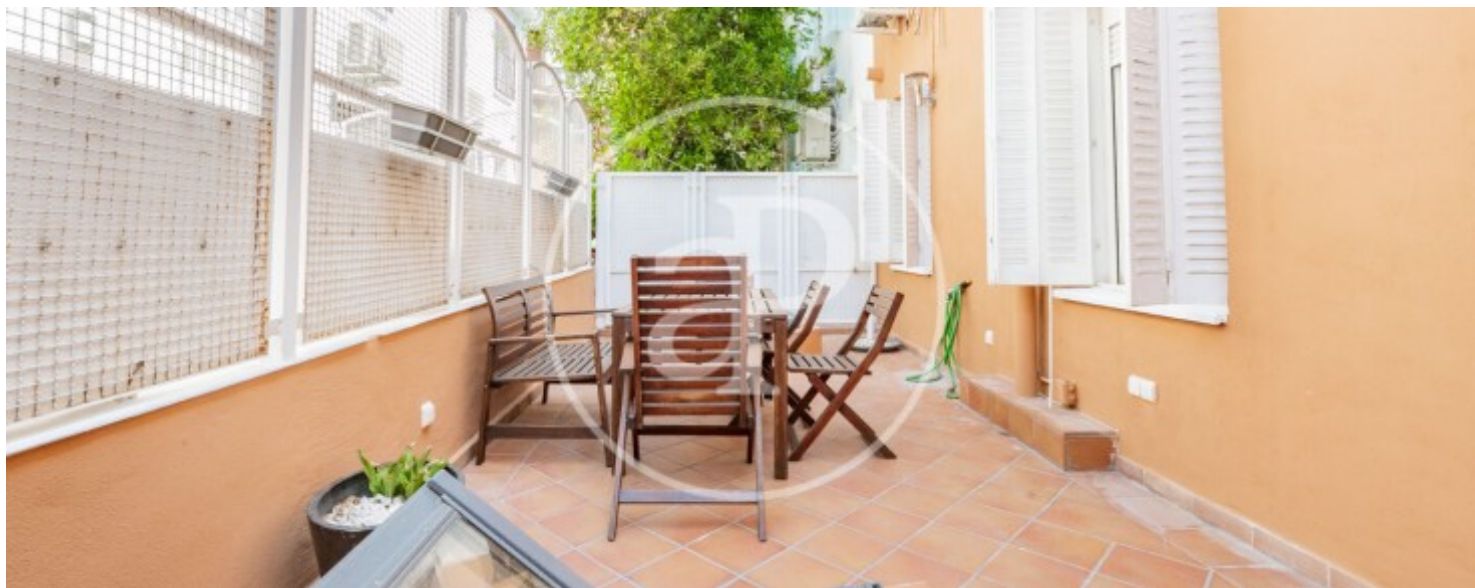
A unique home in Madrid, ideal for families or those who need space and comfort in a perfectly connected area. Ground floor: – Spacious and bright living room. – Dining room with access to a private terrace. – Fully equipped kitchen. – Guest toilet. First floor: – Master bedroom with en-suite bathroom with large built-in wardrobes and a bathroom with a hydromassage shower. – 2 additional bedrooms that share a bathroom. Open-plan

attic: – Ideal space for a study, play area, or extra bedroom. Basement: – Bedroom with separate entrance from the street. – Full bathroom with shower and large hydromassage bathtub. – Additional living room and laundry room. Air conditioning throughout. Built-in wardrobes in several rooms. South-facing, very bright. Furnished and ready to move into. SETTINGS AND EXTRAS - Very quiet residential area, with all amenities within walking distance. - A 3-minute walk from a private garage with 24-hour security (optional, not included in the price). 300 m² built |...

Contact us,
we will be happy to assist you,
to offer you more details and information.

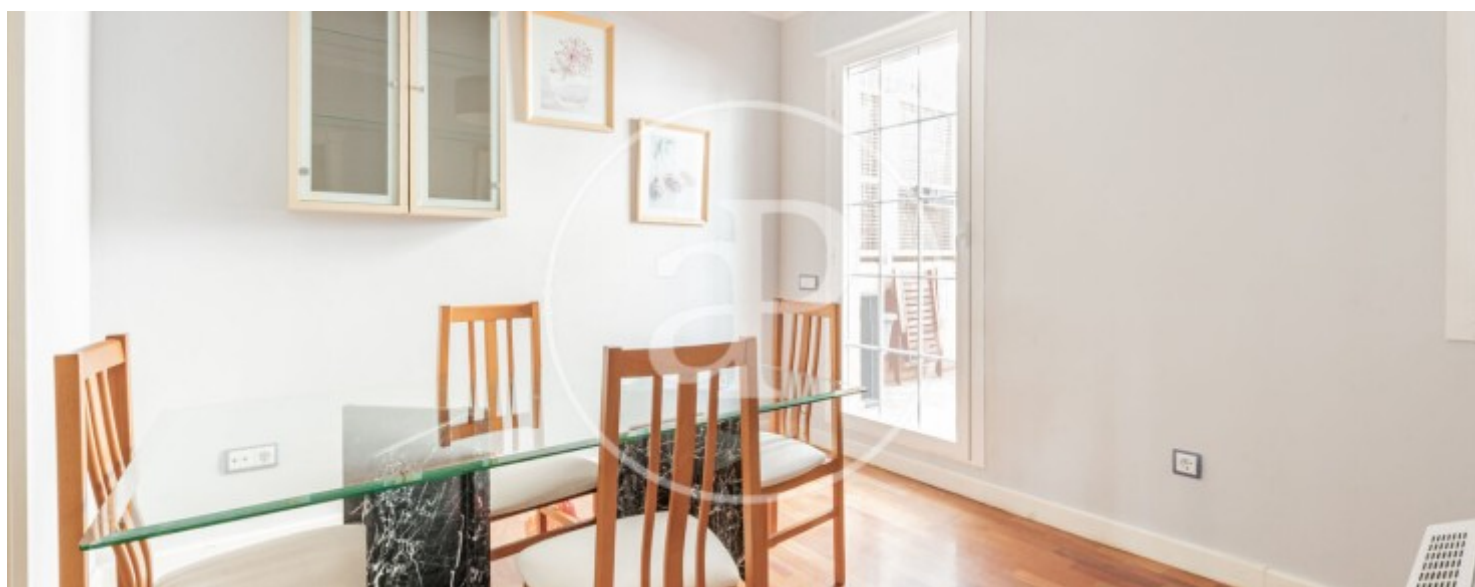
Guindalera, Madrid

REF. AM2507013



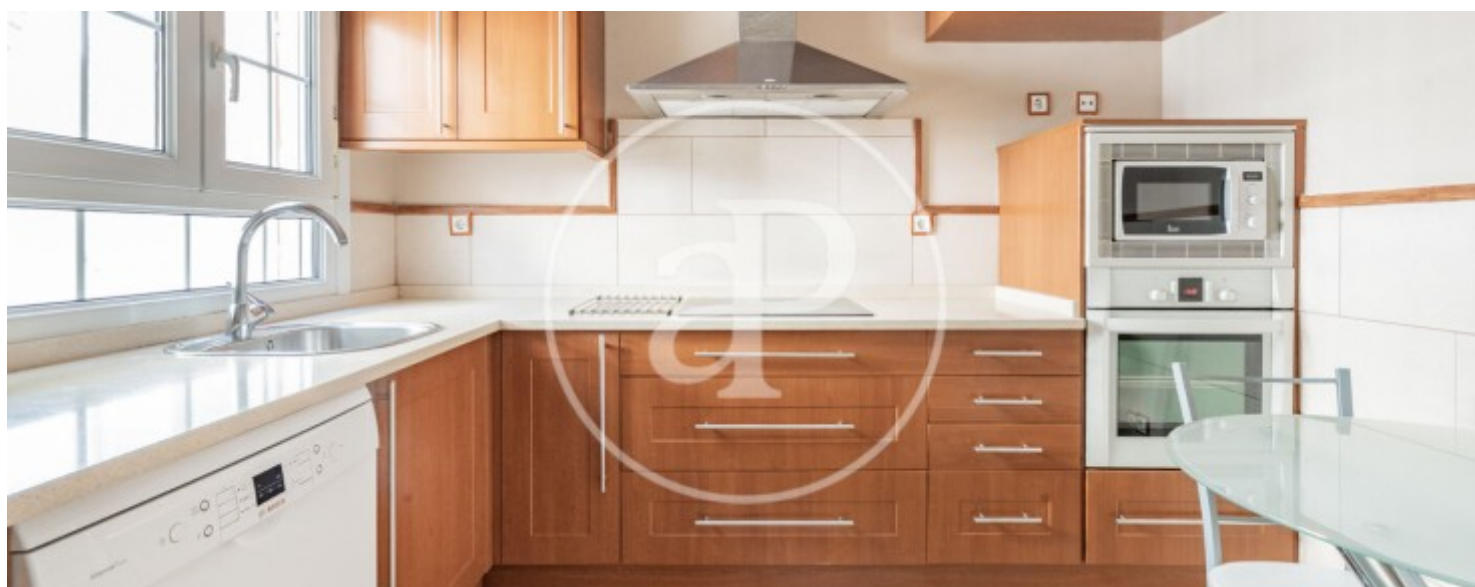
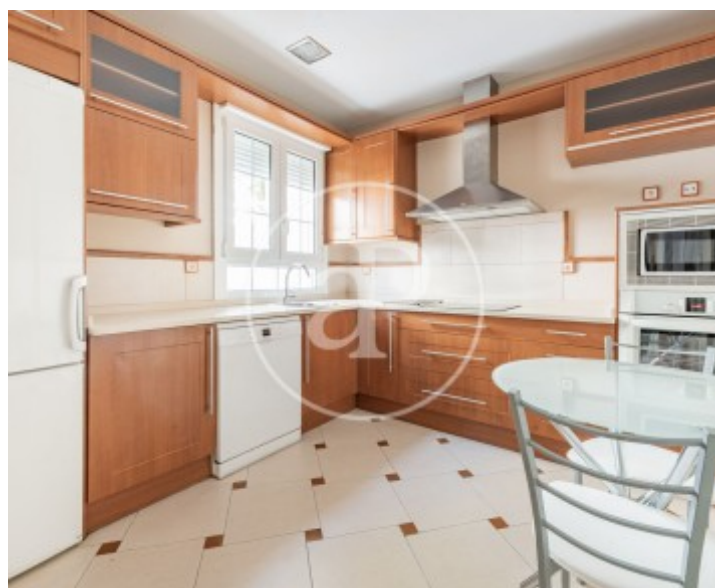
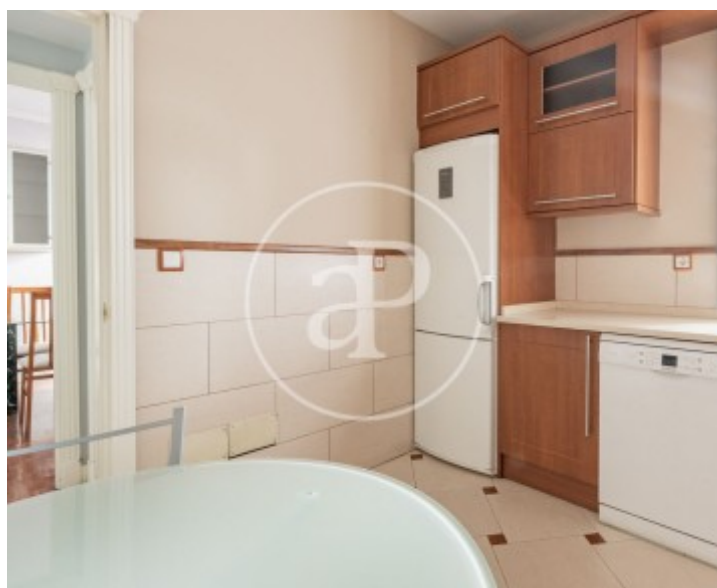
Guindalera, Madrid

REF. AM2507013



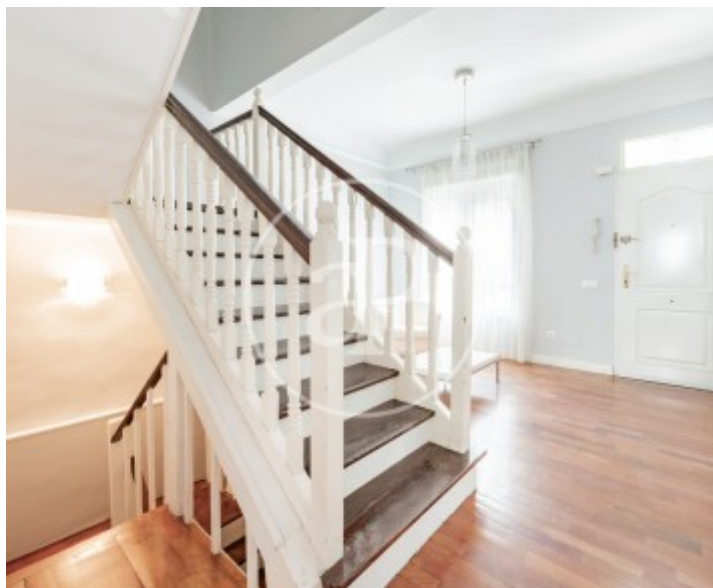
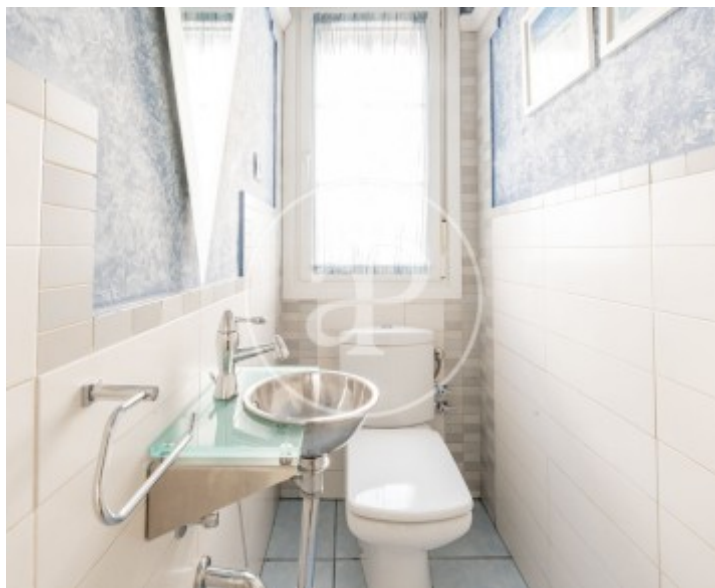
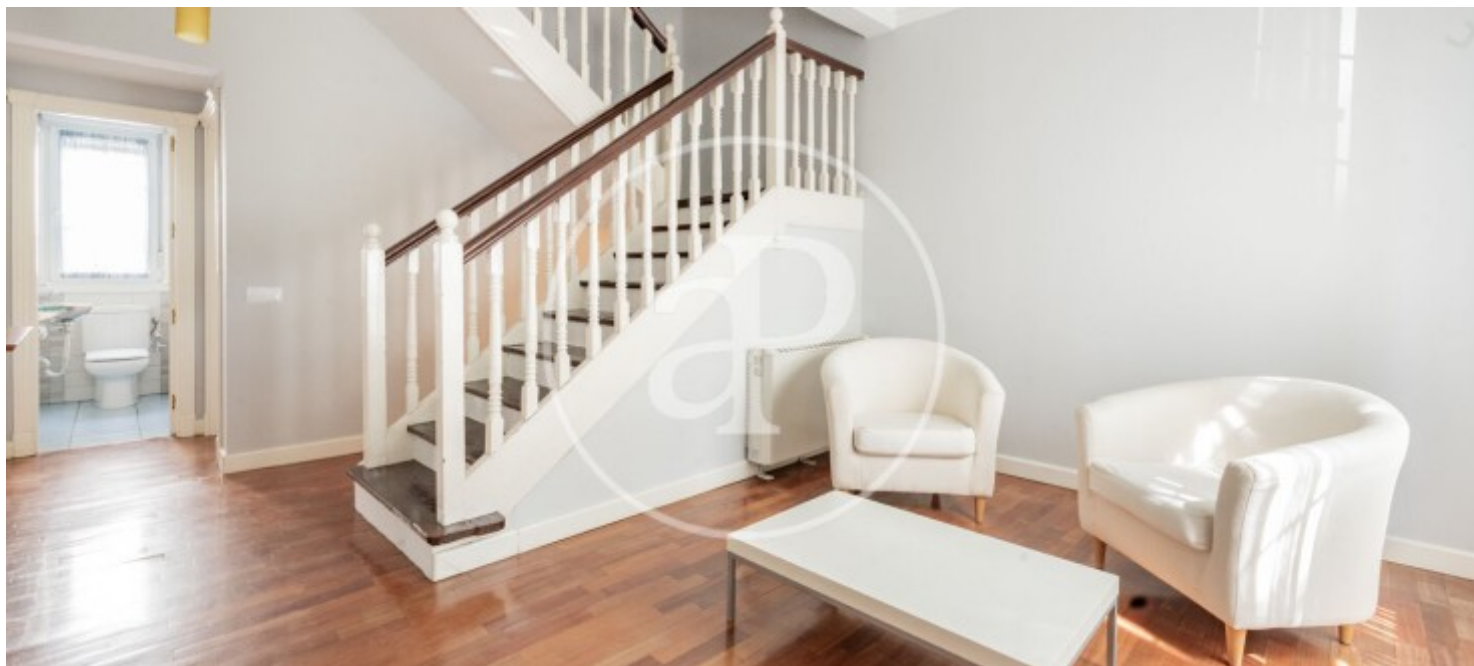
Guindalera, Madrid

REF. AM2507013



Guindalera, Madrid

REF. AM2507013



The information about any property is not binding to any offer or contract. Any verbal or written declaration made by aProperties with regards to the value or condition of the property should not be considered accurate or factual. The pictures make reference to some parts of the property at the times that they were taken. The areas, dimensions and distances that are given are approximate and should be checked by the client. The images are computer generated and are just an approximate indication of the real appearance of the property; these may change at any time. The information with regards to the property may also change at any time.

For **more information** or
to make an appointment

apropertiesmadrid@aproperties.es
Tel: 91 800 54 65
www.aproperties.es