

Guindalera, Madrid

REF. VM2603088

Residence for sale with large terrace in the Barrio de Salamanca

Features

- ✓ Views
- ✓ Heating
- ✓ AACC
- ✓ Terrace
- ✓ Backyard
- ✓ Lift

Price

1,450,000 €

Surface
300 m²

Bedrooms
4

Bathrooms
4



Luxury residence of 300 m² with terrace of over 60 m² Exclusive 300 m² home featuring a spectacular private terrace of more than 60 m², distributed over two floors and designed to maximize space, light, and design in every room. the main floor is organized around open, well-connected spaces. it includes a large studio, currently used for architecture, which could easily be converted into an additional bedroom. the spacious designer kitchen, fully equipped, offers excellent storage and integrates naturally with the impressive living room, characterized by ceilings over 5 meters high and large windows that open onto a stunning terrace, filling the space with natural light and direct sunlight. From here, access a unique terrace with a decorative fountain and enough space to create

different areas: dining zone, chill-out relaxation area—perfect for outdoor gatherings with complete privacy, as there are no overlooking buildings. This floor also includes two beautiful bedrooms with en-suite bathrooms, an independent laundry area, and a guest toilet. The upper floor is reserved for the most private area, featuring a magnificent master suite with balconies overlooking the street, a large walk-in closet with a central island, a beautifully integrated bathroom, and an ironing room. the layout also allows the possibility of adding a service room if desired. Main...

Contact us,
we will be happy to assist you,
to offer you more details and information.

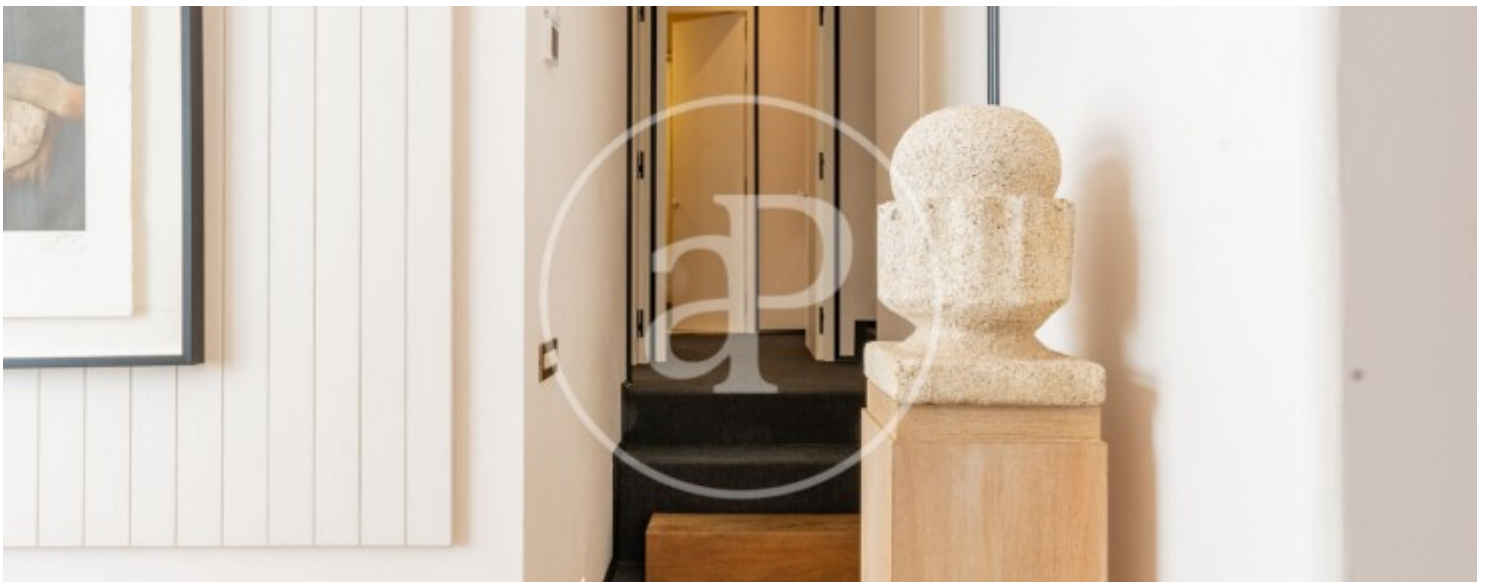
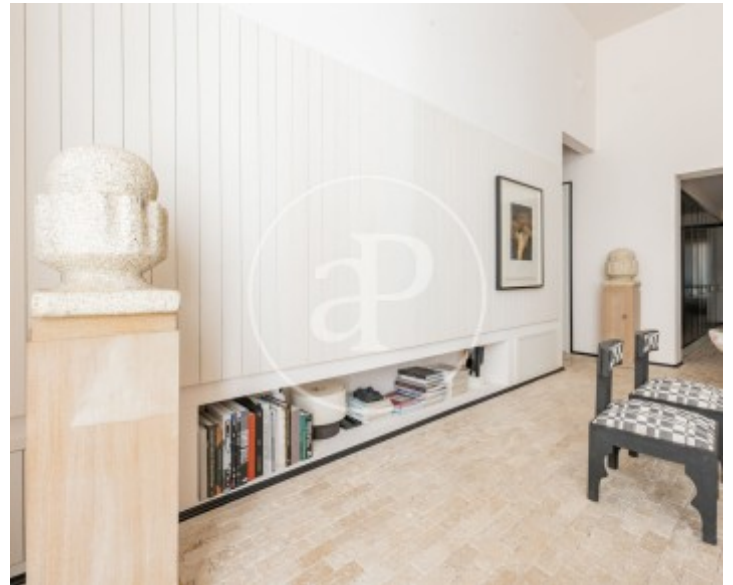
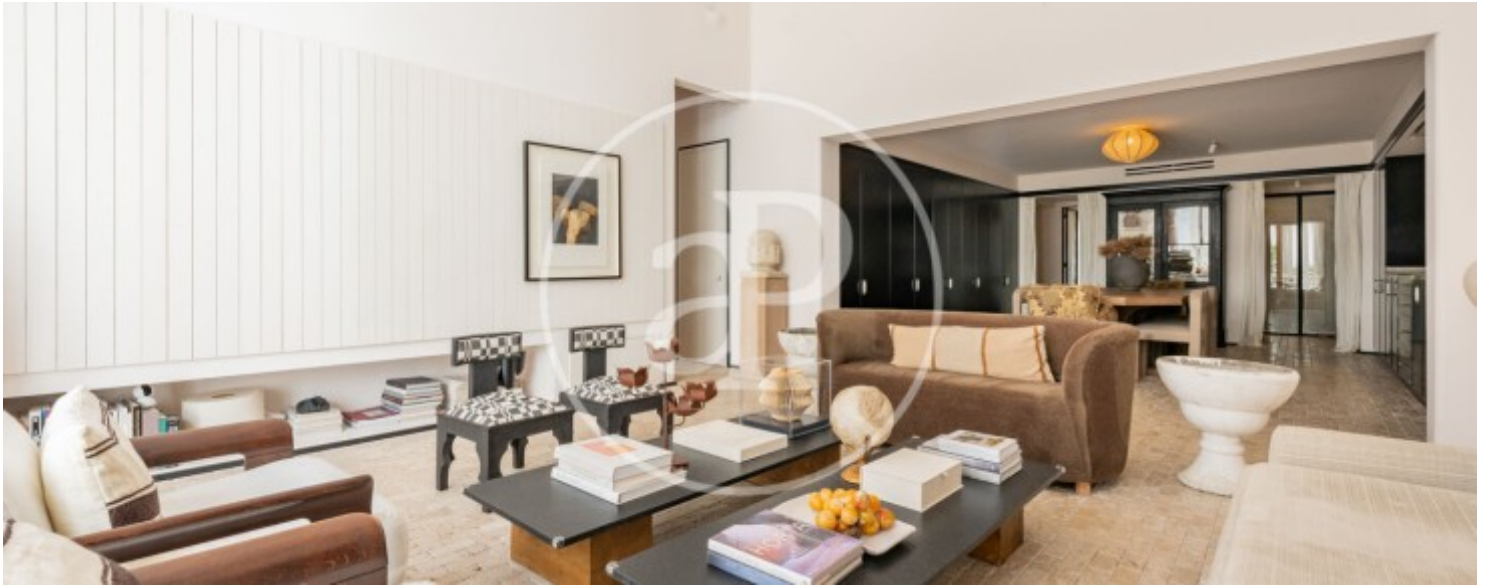
Guindalera, Madrid

REF. VM2603088



Guindalera, Madrid

REF. VM2603088



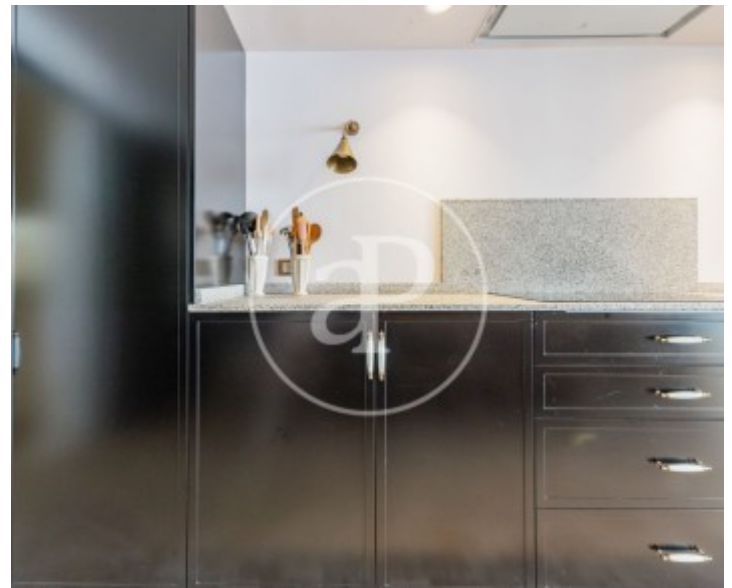
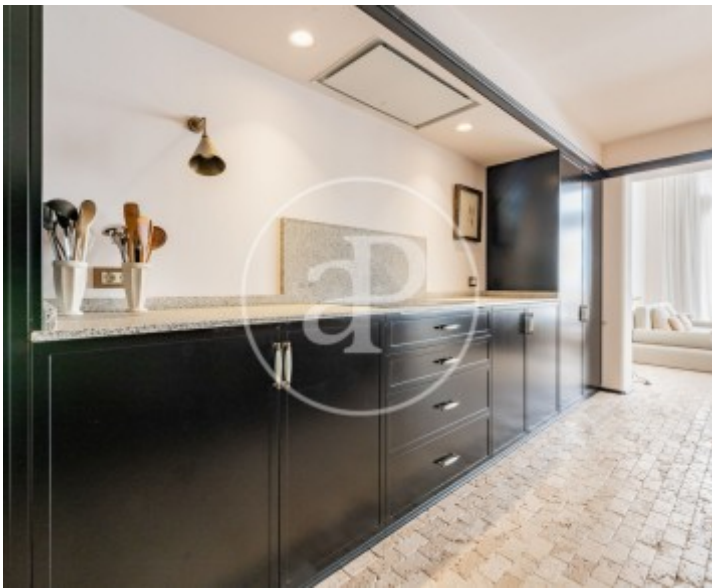
Guindalera, Madrid

REF. VM2603088



Guindalera, Madrid

REF. VM2603088



The information about any property is not binding to any offer or contract. Any verbal or written declaration made by aProperties with regards to the value or condition of the property should not be considered accurate or factual. The pictures make reference to some parts of the property at the times that they were taken. The areas, dimensions and distances that are given are approximate and should be checked by the client. The images are computer generated and are just an approximate indication of the real appearance of the property; these may change at any time. The information with regards to the property may also change at any time.

For **more information** or
to make an appointment

apropertiesmadrid@aproperties.es
Tel: 91 800 54 65
www.aproperties.es