

Guindalera, Madrid

REF. VM2601024

# Penthouse for sale in calle Alcalá

## Features

- ✓ Views
- ✓ Furnished
- ✓ Terrace
- ✓ Concierge
- ✓ Heating
- ✓ AACC
- ✓ Lift

Surface

**129 m<sup>2</sup>**

Bedrooms

**3**

Bathrooms

**2**

Price

**1,300,000 €**



**We present this magnificent PENTHOUSE in the street Alcalá, on a seventh floor, with a terrace of more than 20 m2 well equipped and facing south, perfect to enjoy the sun all day.**

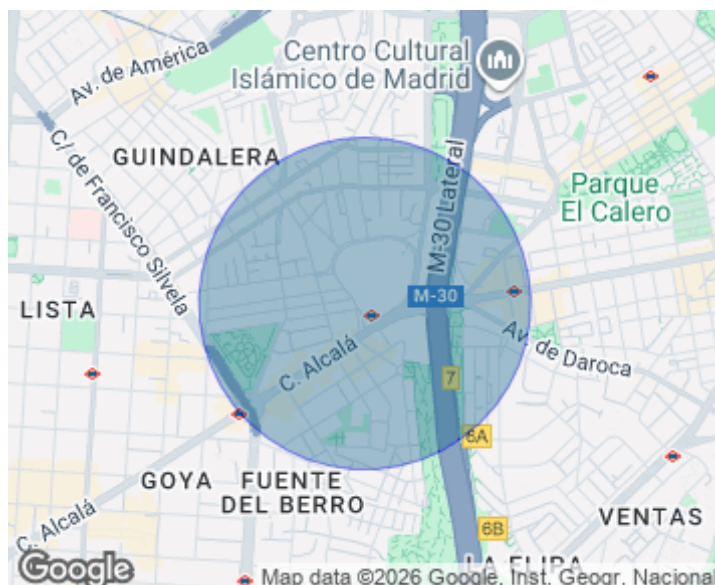
The property consists of 109 m2 of housing built with a terrace of more than 20 m2 and is composed of 3 large double bedrooms and two full bathrooms. The master bedroom has an en suite bathroom. Fitted wardrobes in all rooms, as well as a practical laundry room. The modern fully equipped kitchen with high-end appliances and spacious living room with direct access to the terrace. The house has been completely renovated with quality materials, including the renovation of all electrical

installations and plumbing. It has ducted air conditioning in all rooms and high efficiency swing-bed windows with motorized shutters that guarantee maximum comfort at any time of the year. It is located in a representative estate of 1974 and well maintained in the neighborhood of Guindalera, which has concierge service and large portal. It is a great opportunity to acquire a unique penthouse, with perfect distribution and luminosity, with a spectacular terrace and great views, being located on a seventh floor and south facing, ideal for living and with a high potential of profitability for...

**Contact us,**  
we will be happy to assist you,  
to offer you more details and information.

Guindalera, Madrid

REF. VM2601024





Guindalera, Madrid

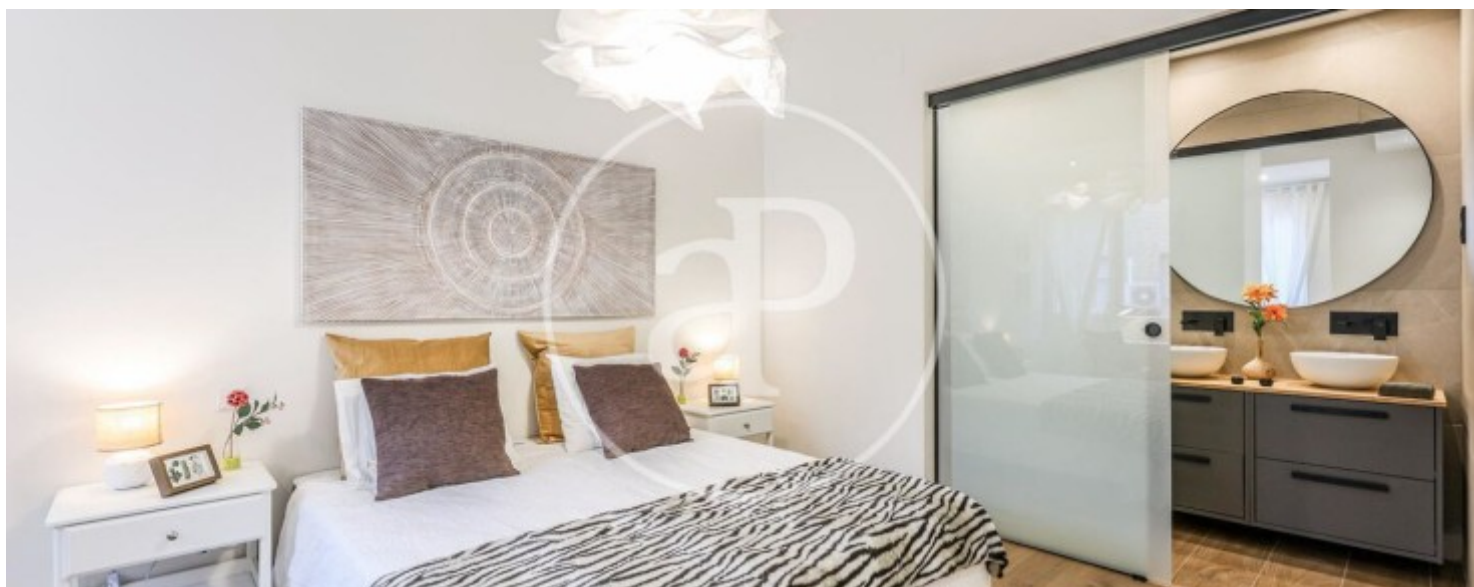
REF. VM2601024





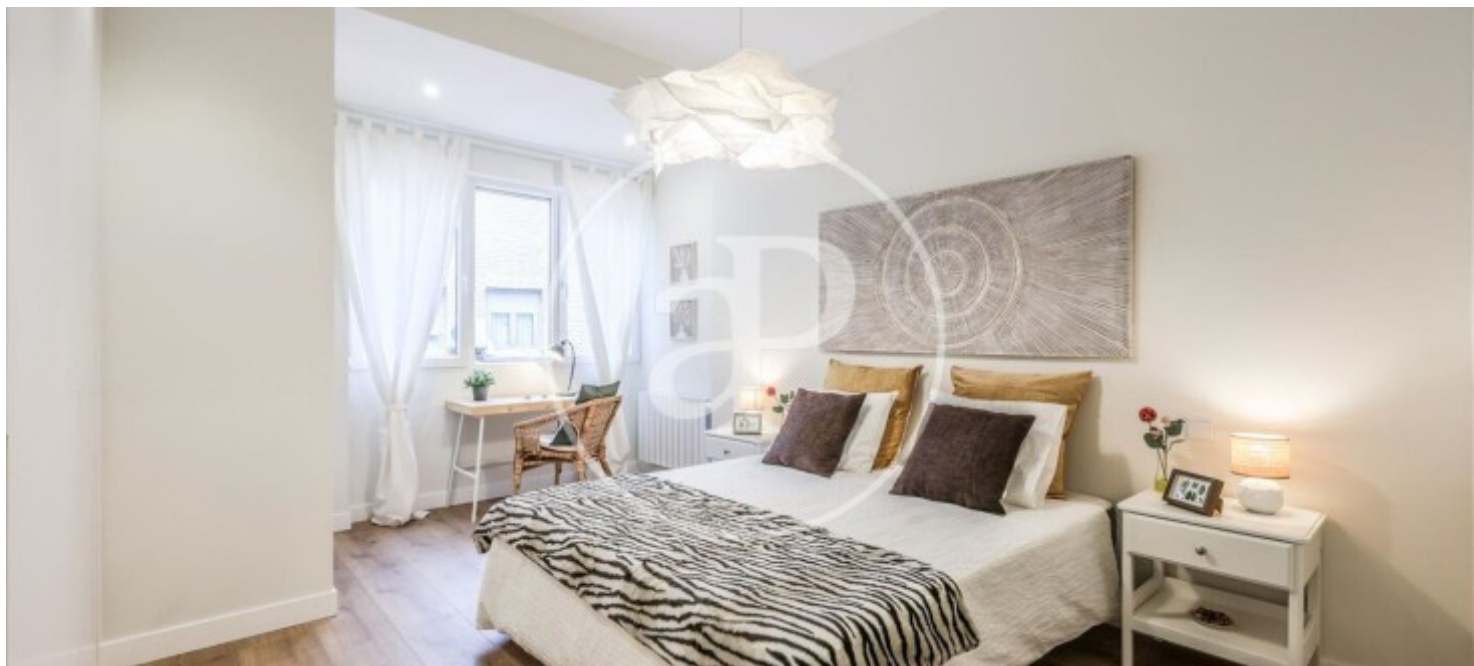
Guindalera, Madrid

REF. VM2601024



Guindalera, Madrid

REF. VM2601024



The information about any property is not binding to any offer or contract. Any verbal or written declaration made by aProperties with regards to the value or condition of the property should not be considered accurate or factual. The pictures make reference to some parts of the property at the times that they were taken. The areas, dimensions and distances that are given are approximate and should be checked by the client. The images are computer generated and are just an approximate indication of the real appearance of the property; these may change at any time. The information with regards to the property may also change at any time.

For **more information** or  
to make an appointment

[apropertiesmadrid@aproperties.es](mailto:apropertiesmadrid@aproperties.es)  
Tel: 91 800 54 65  
[www.aproperties.es](http://www.aproperties.es)