



Guindalera, Madrid

REF. AM2201005

# Exterior flat for rent in Avenida de los Toreros

## Features

Surface

**112 m<sup>2</sup>**

Bedrooms

**3**

Bathrooms

**2**

- ✓ Views
- ✓ Heating
- ✓ AACC
- ✓ Lift

Price

**1,760 €**



**Luminous exterior flat facing Londres street, brand new and recently refurbished with top quality finishes.**

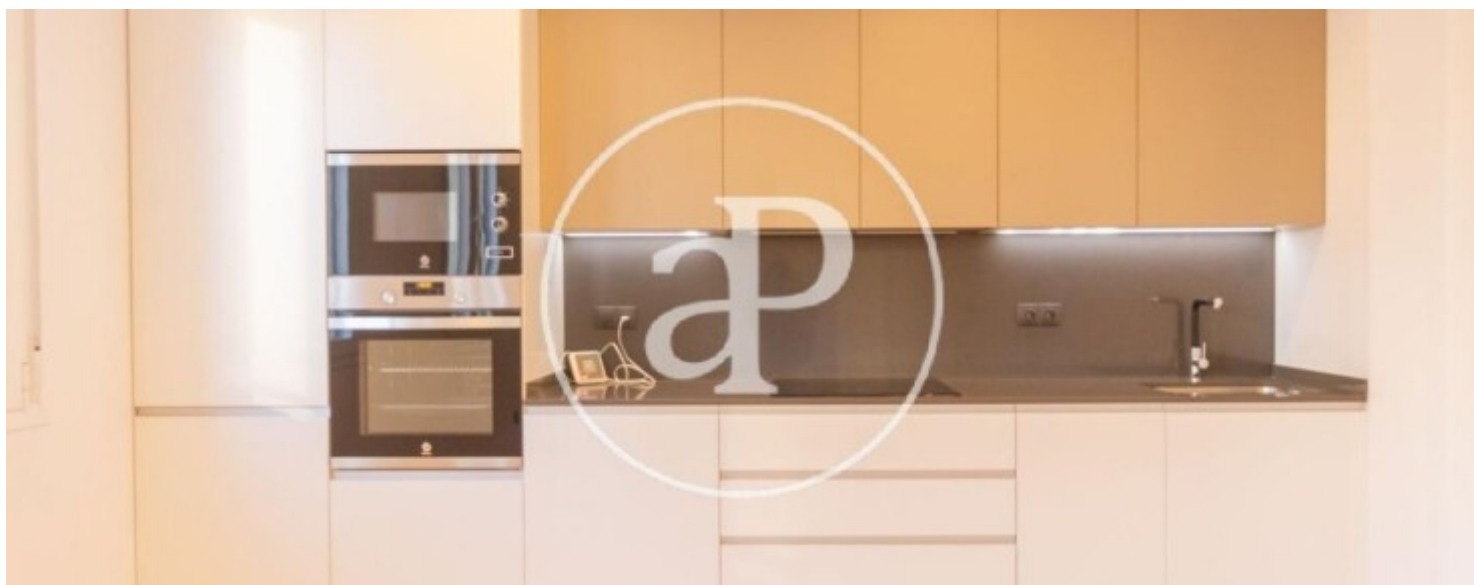
The property has three bedrooms, two bathrooms, one of them en suite, laundry room and spacious living-dining room. The kitchen is American style and comes equipped with appliances that are panelled. The heating and air conditioning is by ducts (hot/cold pump). The floors are wooden floors, the windows are of excellent quality (temperature/sound insulation), the carpentry is lacquered in white and the blinds in the living room are motorized. The building is very quiet, has six floors and has been completely renovated. It has a communal "chill out"

terrace, a quiet space where you can relax on the sofas, sun loungers and enjoy the wonderful views. There are also showers and pergolas for summer days. The location is privileged, in the Salamanca District and Guindalera neighbourhood, very close to the María Eva Duarte de Perón Park. The access to public transport is very convenient, just five minutes from the Metro Diego de León, Manuel Becerra or Ventas and with numerous bus lines and taxi ranks. Quick access by car via the M30 and Nacional II. \*There is the possibility of keeping the alarm installed (\*consult price)....

**Contact us,**  
we will be happy to assist you,  
to offer you more details and information.

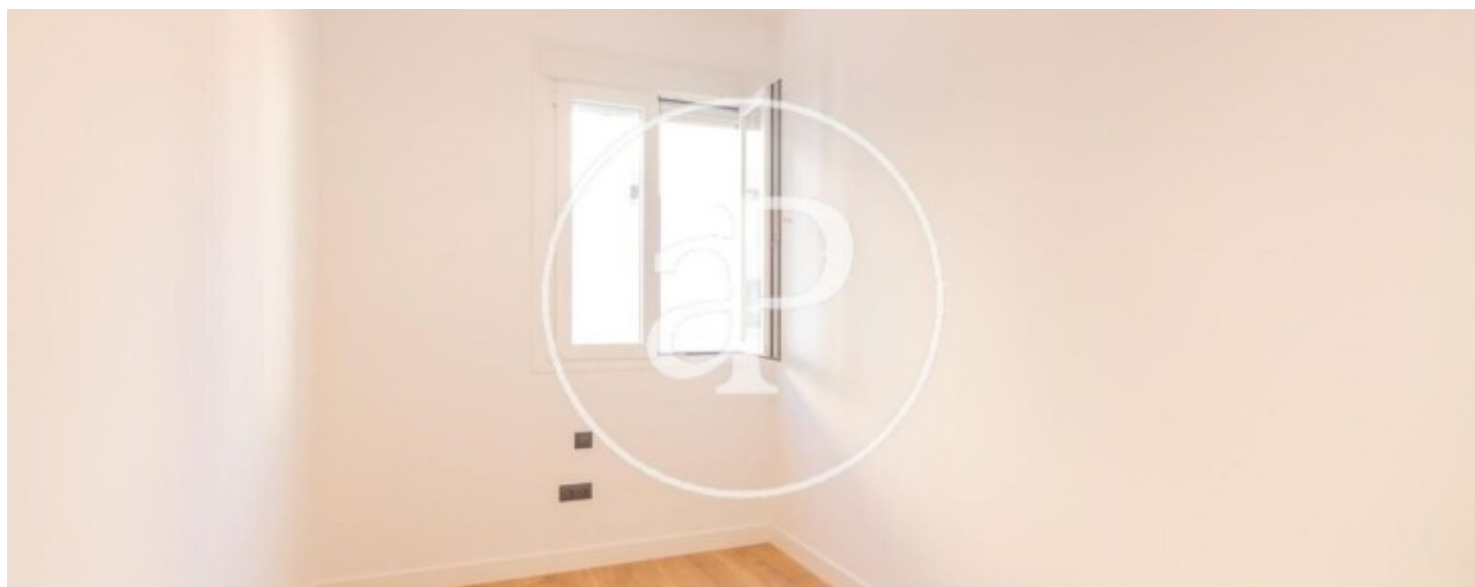
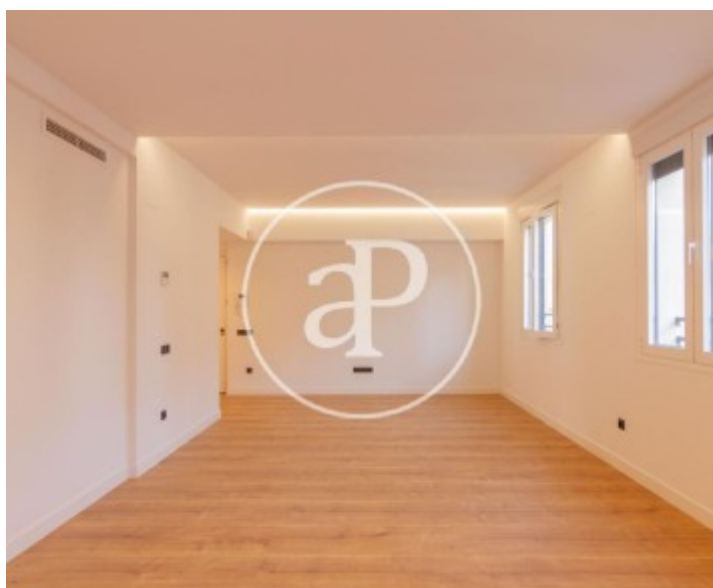
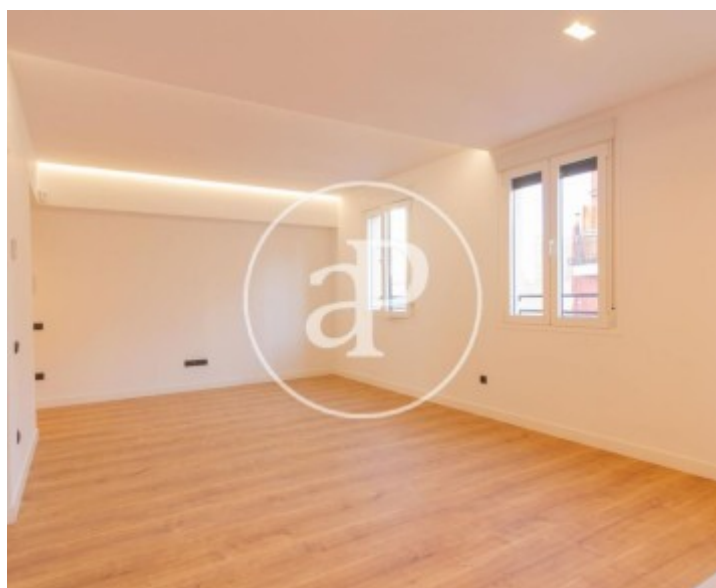
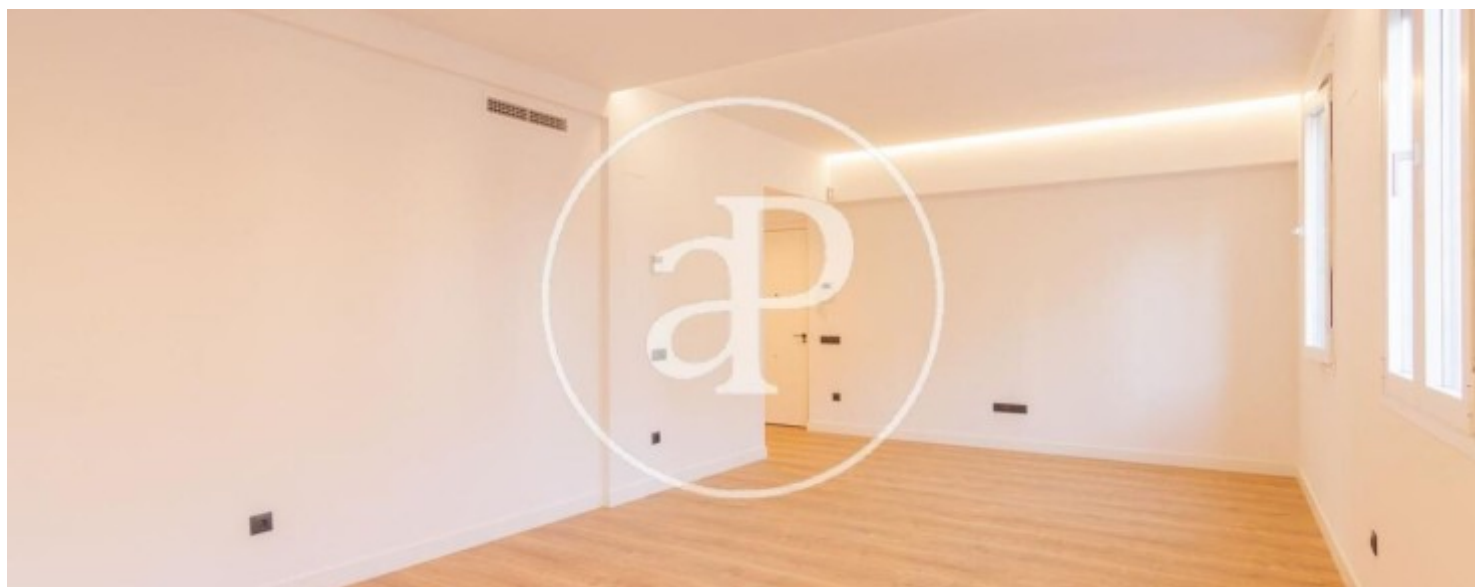
Guindalera, Madrid

REF. AM2201005



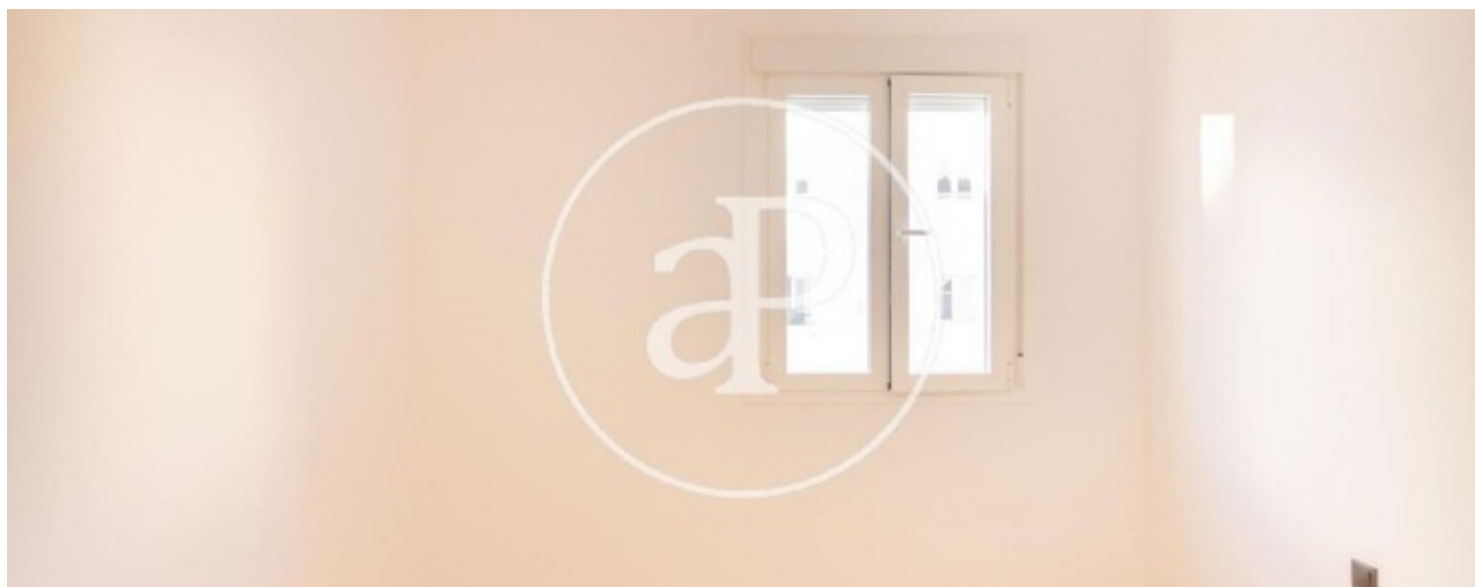
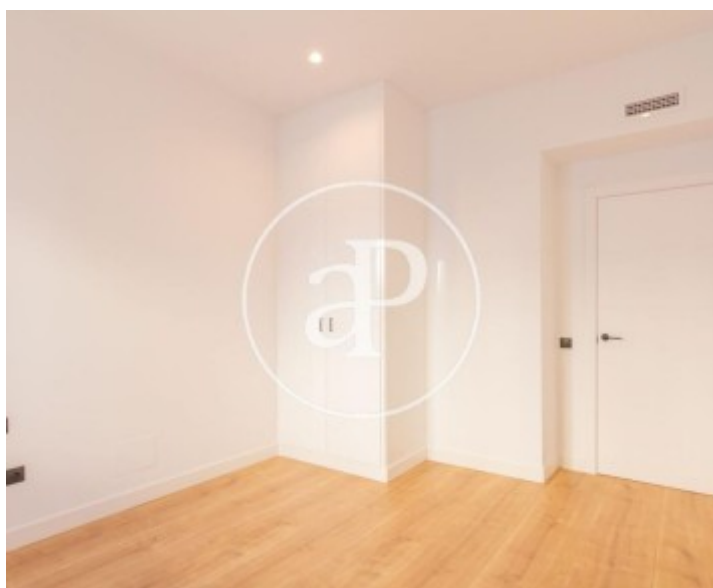
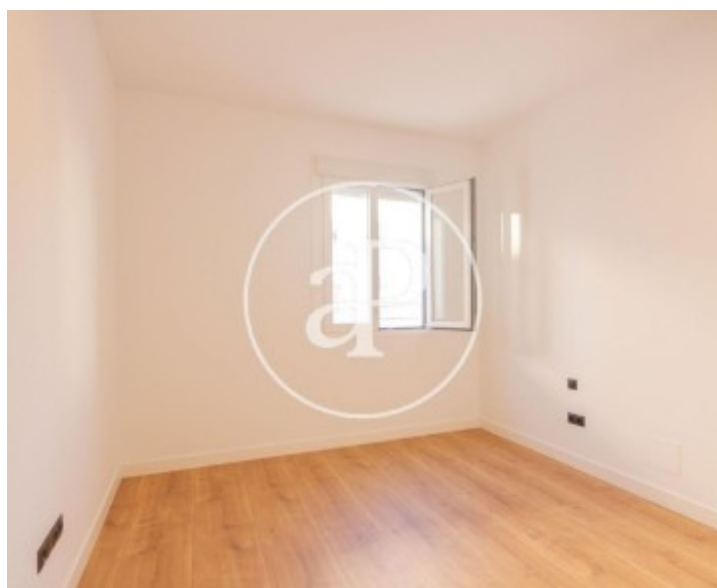
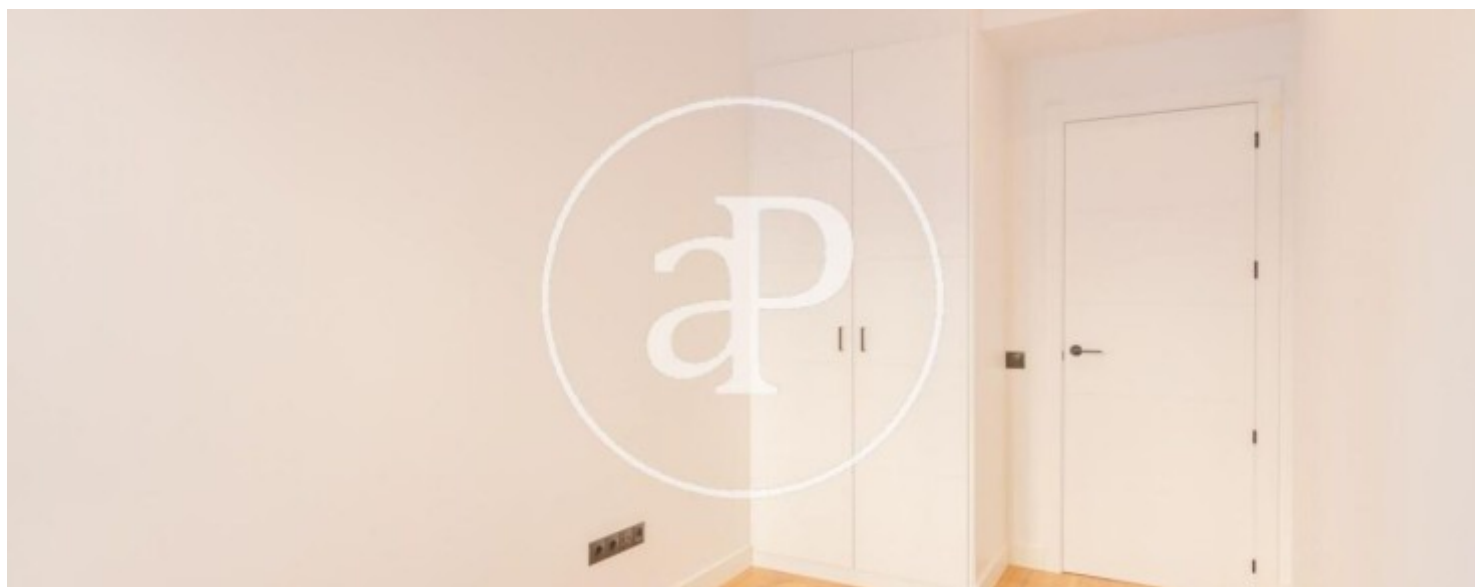
Guindalera, Madrid

REF. AM2201005



Guindalera, Madrid

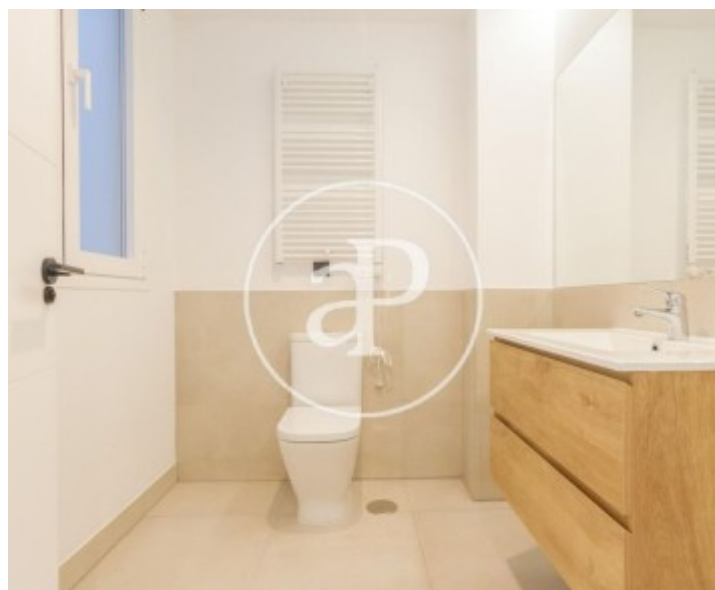
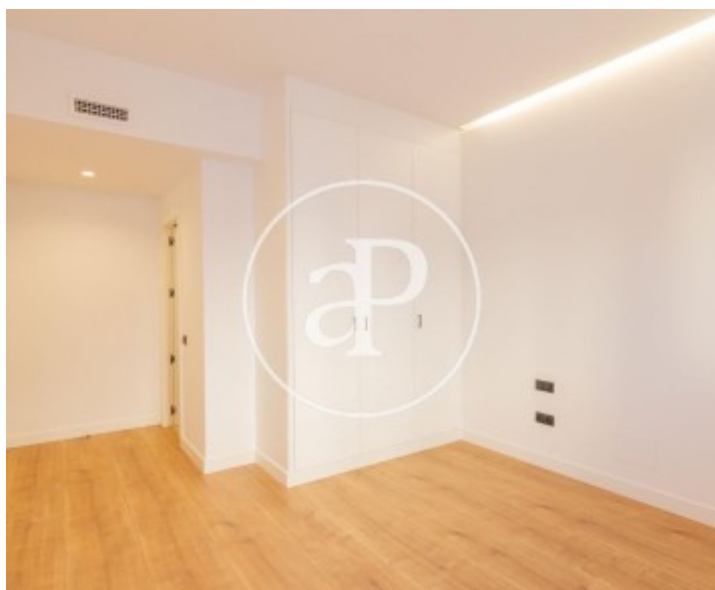
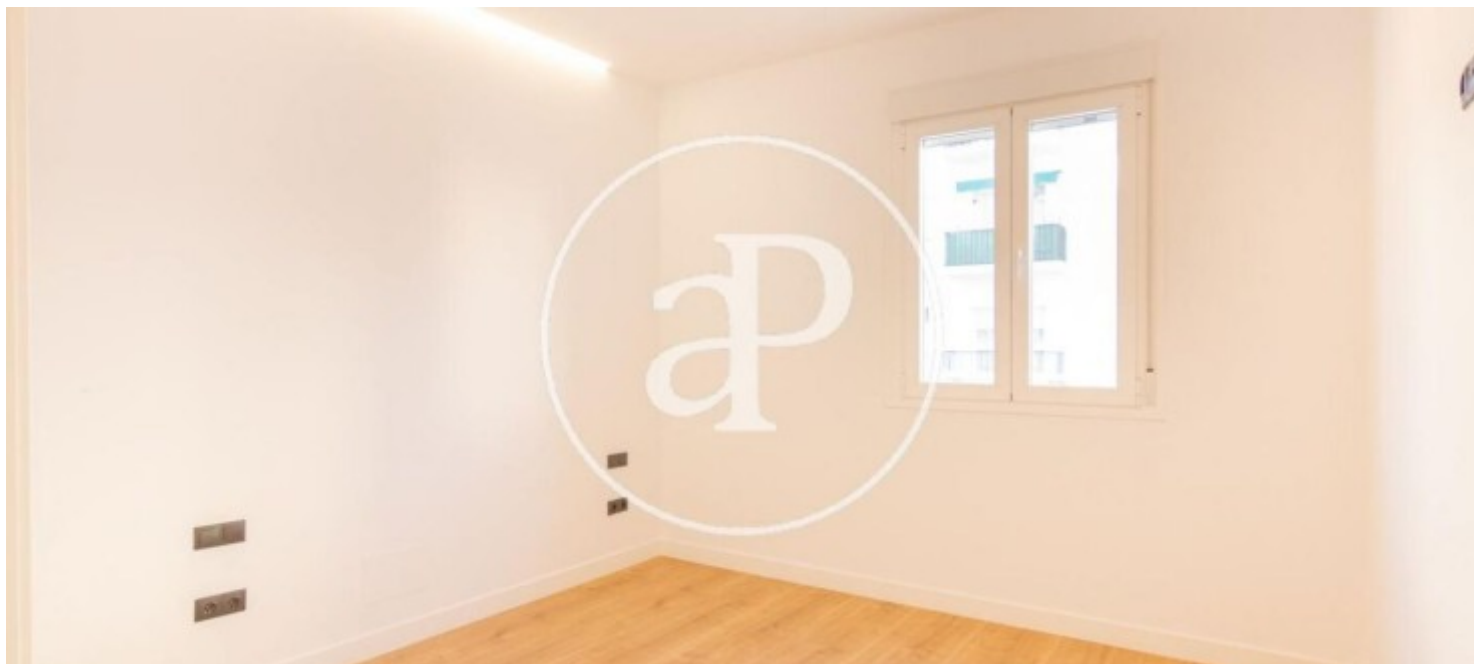
REF. AM2201005





Guindalera, Madrid

REF. AM2201005



The information about any property is not binding to any offer or contract. Any verbal or written declaration made by aProperties with regards to the value or condition of the property should not be considered accurate or factual. The pictures make reference to some parts of the property at the times that they were taken. The areas, dimensions and distances that are given are approximate and should be checked by the client. The images are computer generated and are just an approximate indication of the real appearance of the property; these may change at any time. The information with regards to the property may also change at any time.

For **more information** or  
to make an appointment

[apropertiesmadrid@aproperties.es](mailto:apropertiesmadrid@aproperties.es)  
Tel: 91 800 54 65  
[www.aproperties.es](http://www.aproperties.es)