

Guindalera, Madrid

REF. VM2602021

Flat for sale in Guindalera (Madrid)

Features

- ✓ Heating
- ✓ Terrace
- ✓ Concierge
- ✓ AACC
- ✓ Lift

Surface

102 m²

Bedrooms

2

Bathrooms

2

Price

1,190,000 €



We present this magnificent penthouse with beautiful terrace with unobstructed views and beautiful light in the heart of Guindalera.

It is on the seventh floor of a property built in 1976 in perfect condition and with garage in the property (the property does not have a parking space) but there is the opportunity to rent or buy one in the same building. The property consists of 86 m² constructed area according to the land registry plus a total of 29 m² of terrace. The property is in the process of being refurbished with a great square distribution; It will have a large living room with integrated kitchen with all appliances, a wonderful space thanks

to its modern design and the brightness that gives the glass doors with access to the wonderful and large terrace, an ideal space to share with family and friends. There are two bedrooms, one of them with en-suite bathroom and access to the terrace, plus another bathroom that supports the second bedroom and social area. The property has porter service, central heating and hot water... The area is equipped with all essential services, well connected by public transport. A unique opportunity to acquire a beautiful penthouse with sunny terrace in the Barrio de Salamanca. Can you...

Contact us,
we will be happy to assist you,
to offer you more details and information.

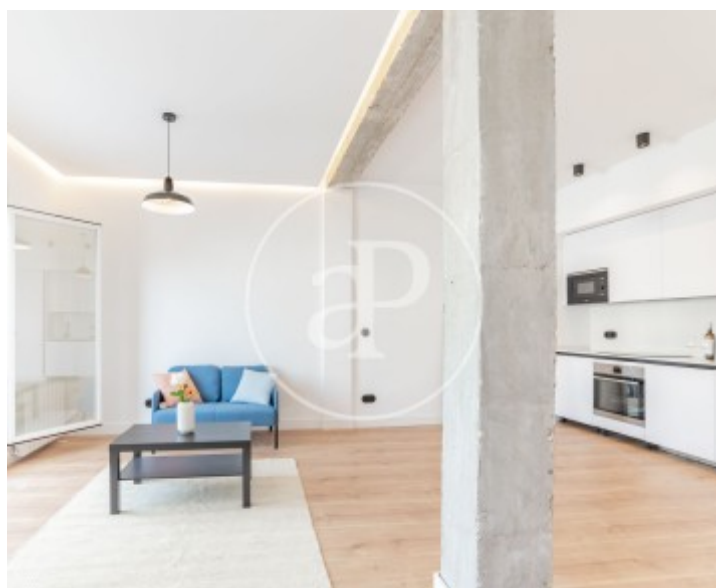
Guindalera, Madrid

REF. VM2602021



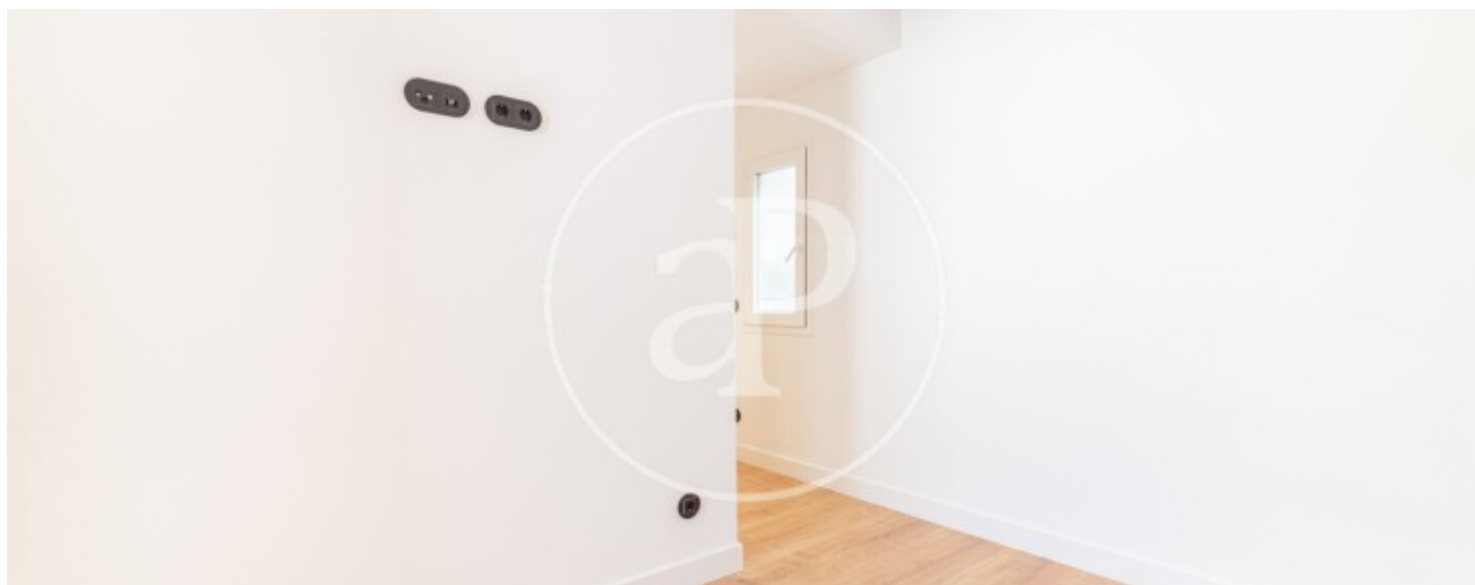
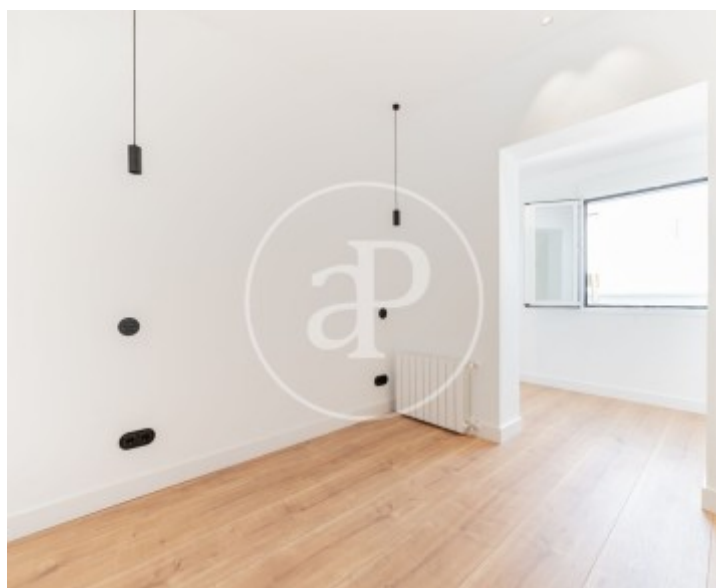
Guindalera, Madrid

REF. VM2602021



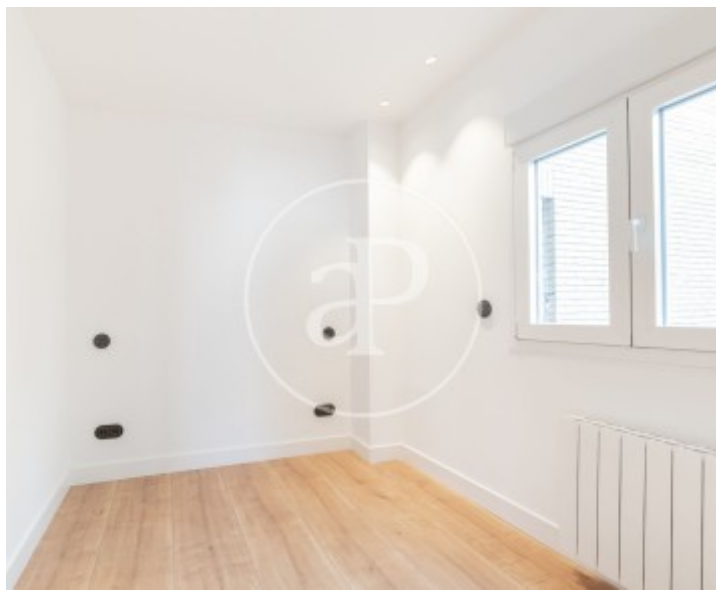
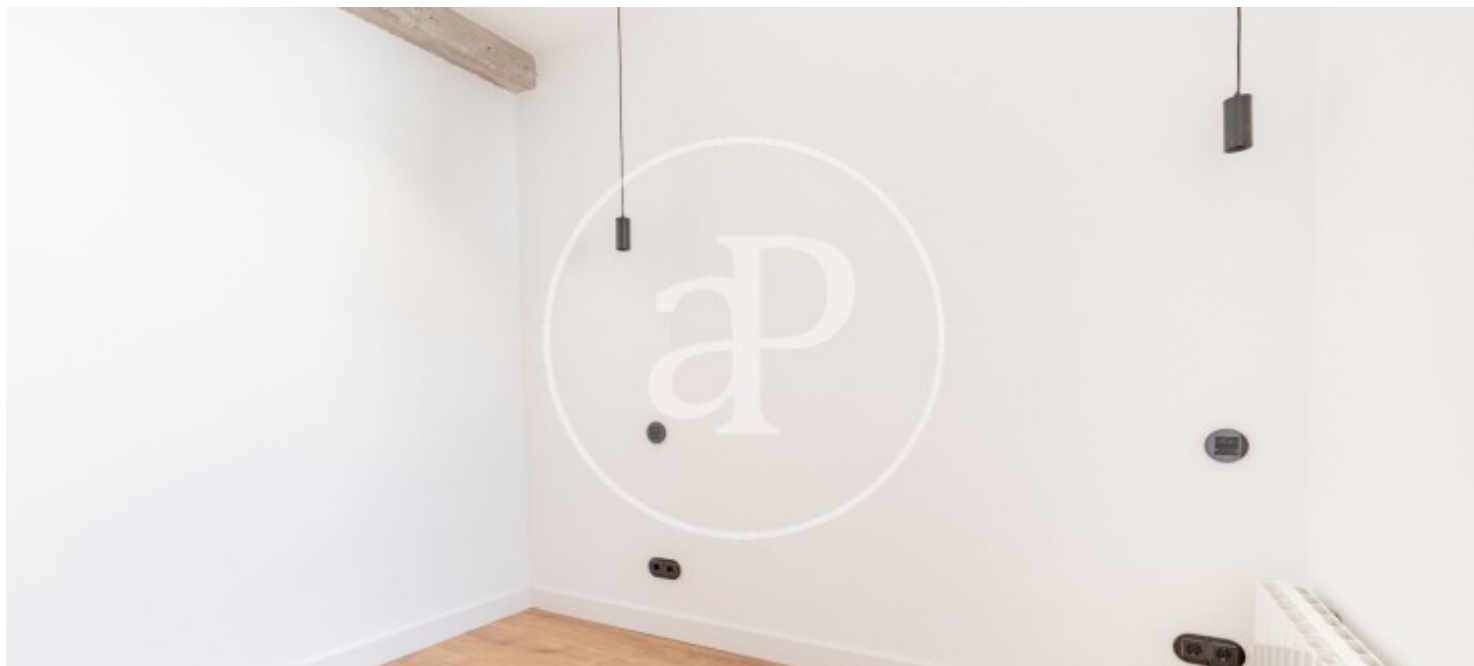
Guindalera, Madrid

REF. VM2602021



Guindalera, Madrid

REF. VM2602021



The information about any property is not binding to any offer or contract. Any verbal or written declaration made by aProperties with regards to the value or condition of the property should not be considered accurate or factual. The pictures make reference to some parts of the property at the times that they were taken. The areas, dimensions and distances that are given are approximate and should be checked by the client. The images are computer generated and are just an approximate indication of the real appearance of the property; these may change at any time. The information with regards to the property may also change at any time.

For **more information** or
to make an appointment

apropertiesmadrid@aproperties.es
Tel: 91 800 54 65
www.aproperties.es